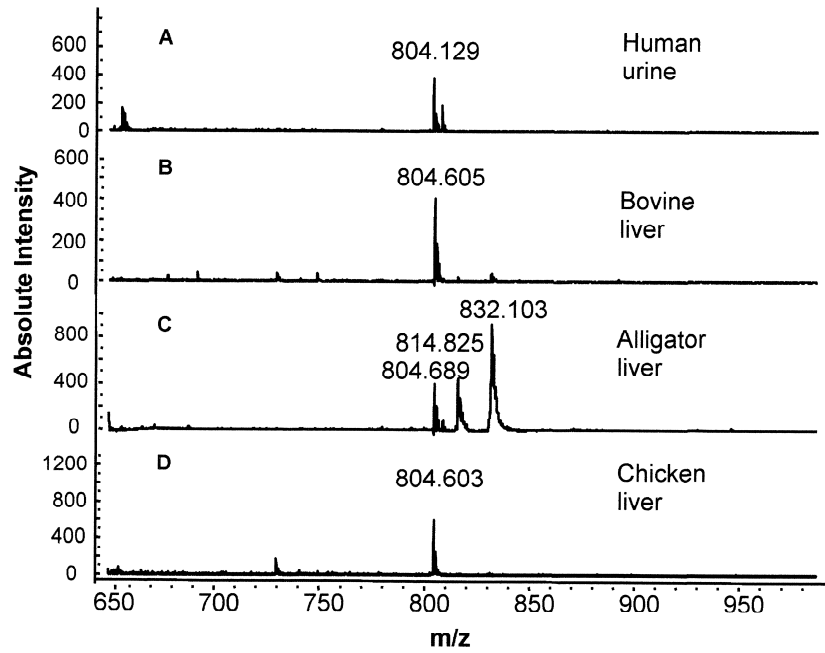
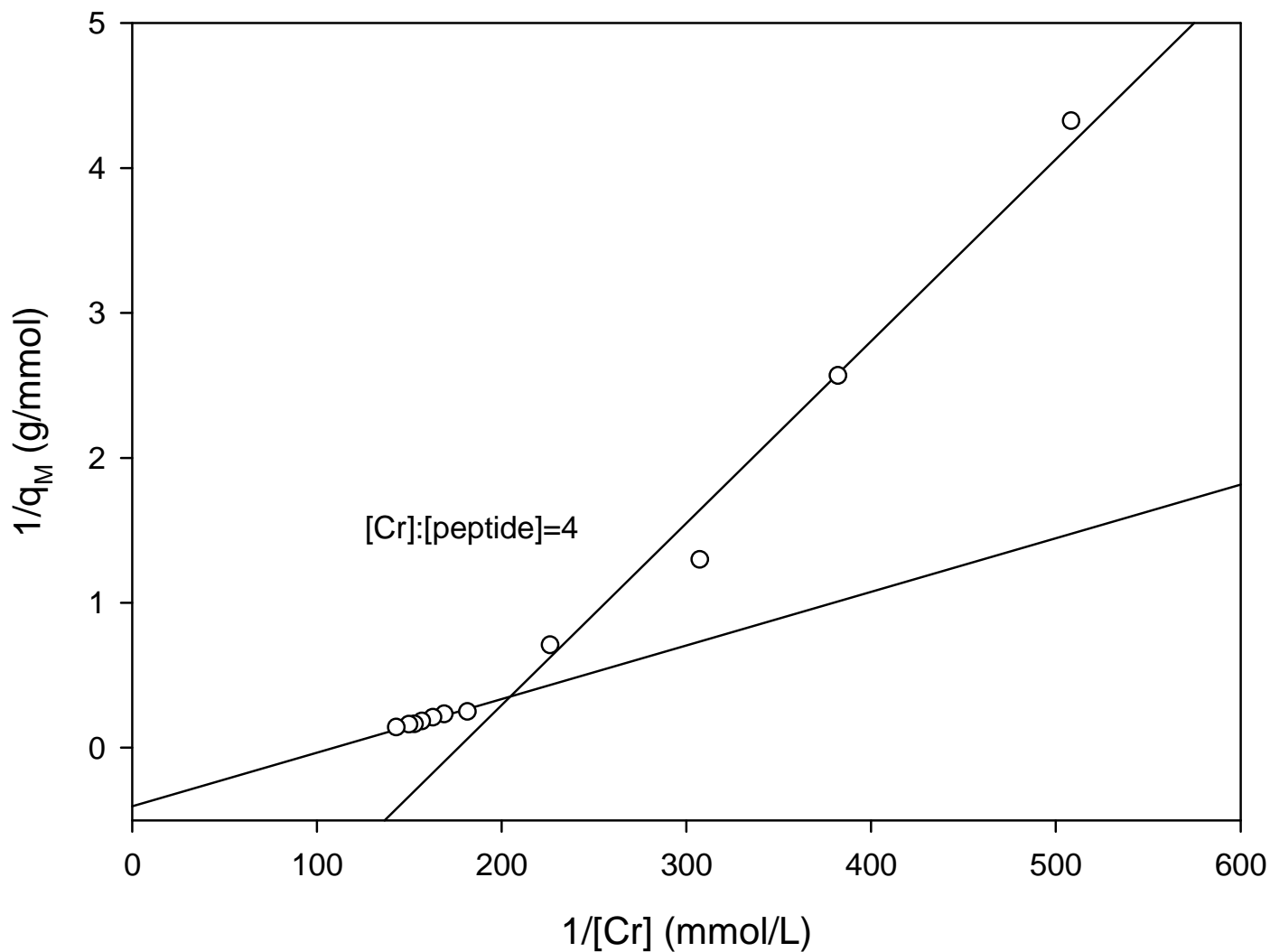


Online Supporting Material



Supplemental Figure 1. Negative mode MALDI/TOF MS spectra of LMWCr peptide from human urine (A), bovine liver (B), alligator liver (C), and chicken liver (D).



Supplemental Figure 2. Langmuir linear isotherm for Cr^{3+} ion absorbed to synthetic peptide pEEEEGDD. Volume of absorption medium: 200 mL, temperature, 4 °C; absorption time: 12 hours; initial pH, 7.4. The intersection point corresponds to a ration of [Cr] to [peptide] of ~4. q_M corresponds to the amount of bound metal in mmol/g peptide.