

**An unusual tRNA^{Thr} derived from tRNA^{His} reassigns in yeast mitochondria
the CUN codons to threonine**

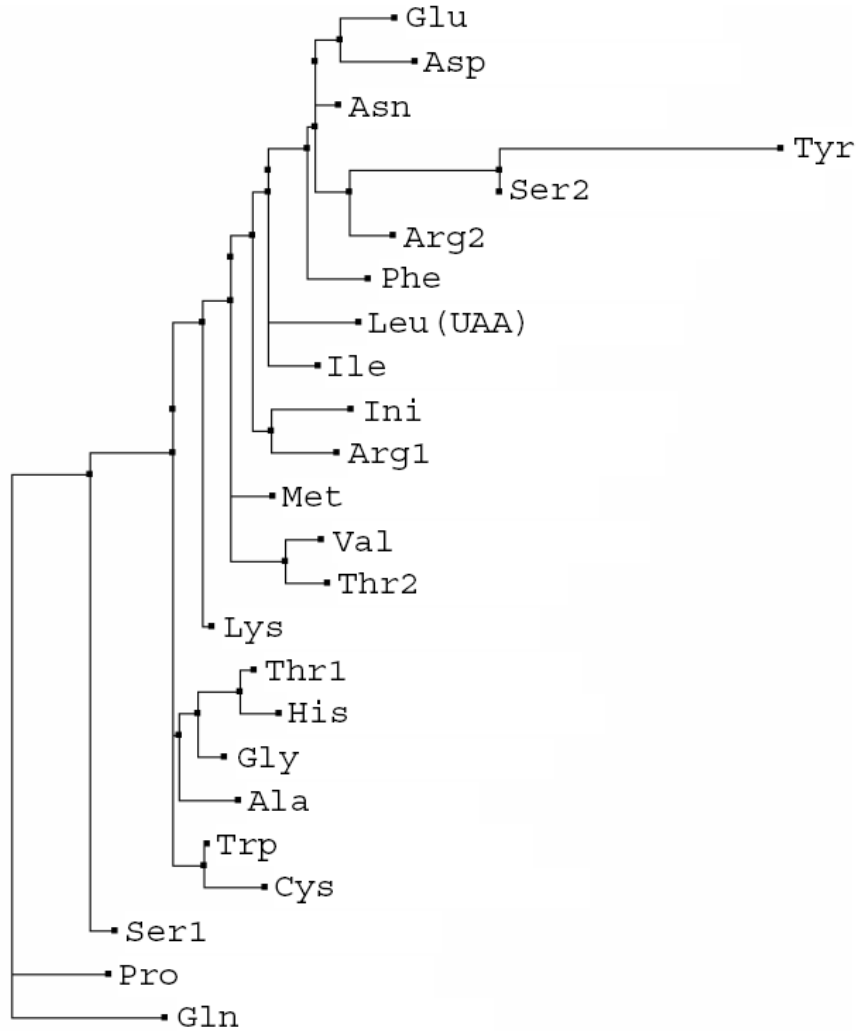


Figure S1. Phylogeny of *S. cerevisiae* mitochondrial tRNAs. *S. cerevisiae* mitochondria lack tRNA^{Leu} with a UAG anticodon, but contain tRNA^{Thr1}. Phylogenetic analysis shows that tRNA^{Thr1} is closely related to tRNA^{His}, but is distant from tRNA^{Thr2}.