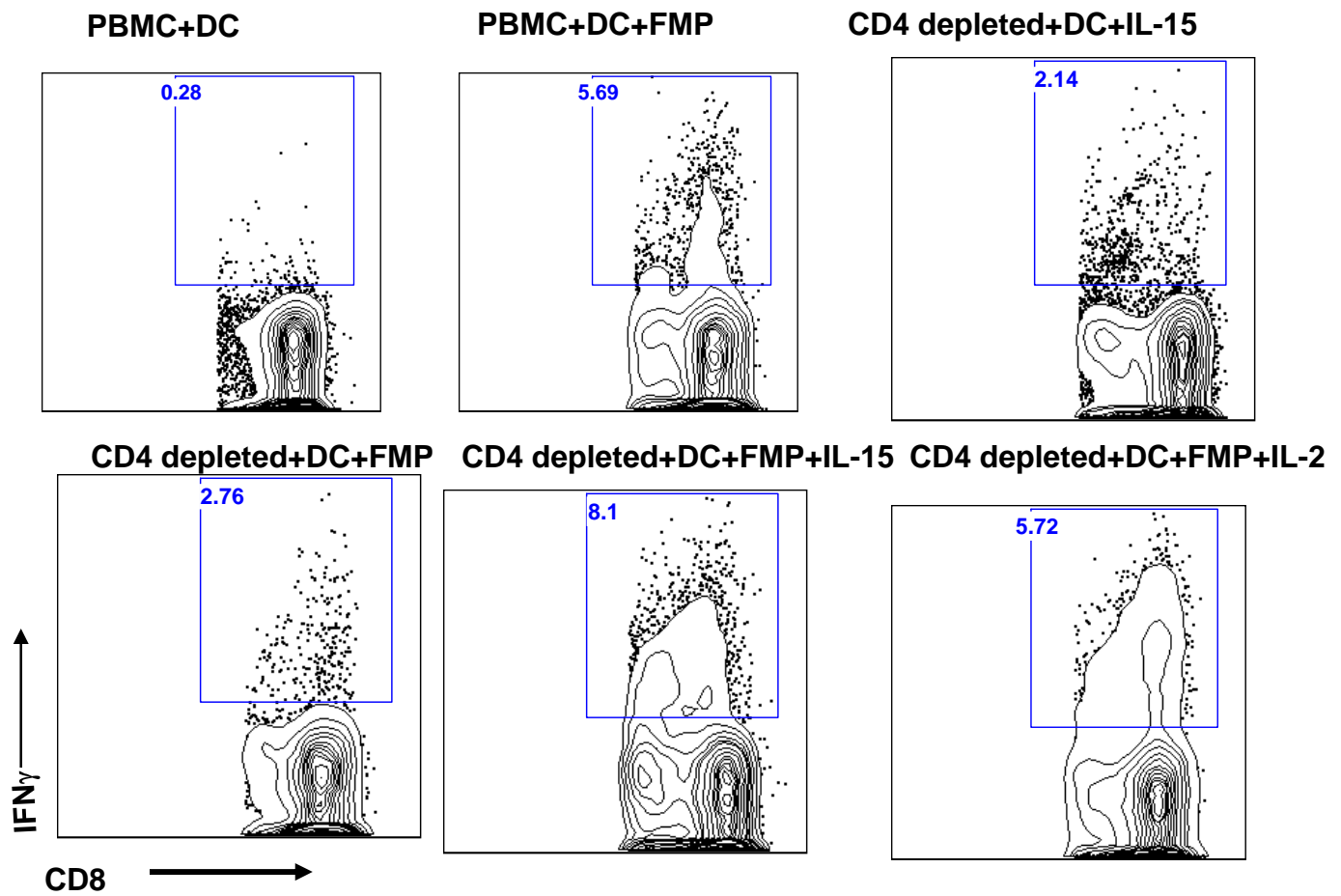


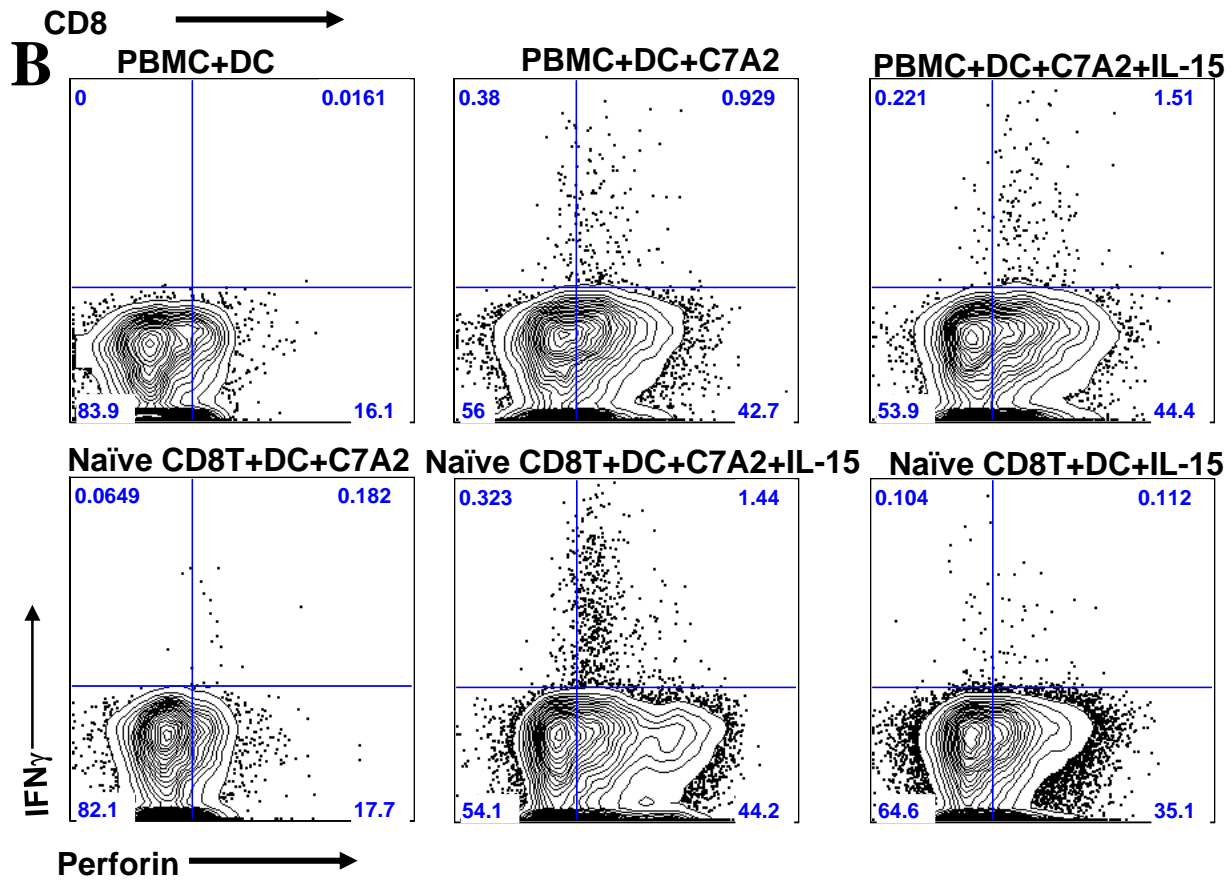
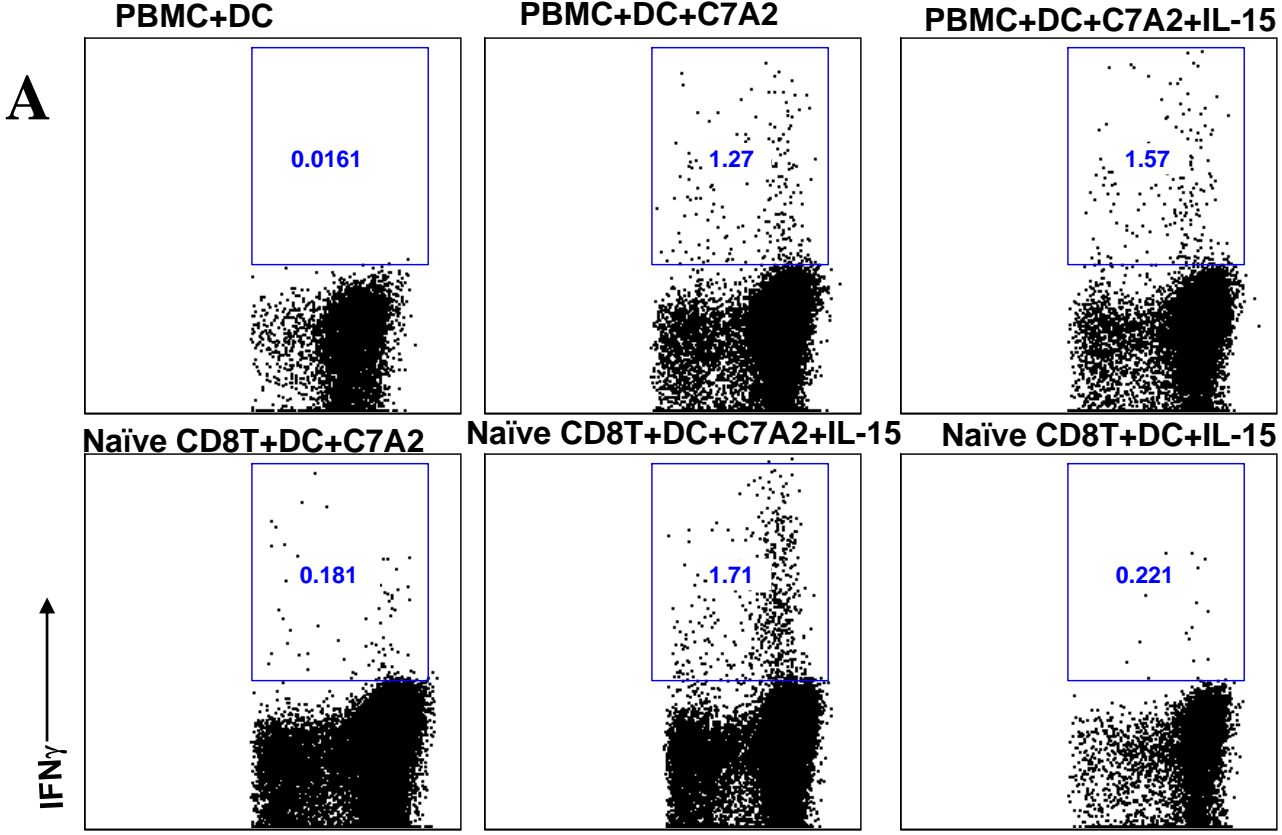
Supplemental Figure 1

Up-regulated expression of surface markers CD80, CD83, CD40, and HLA-DR on mature MDDCs (blue curves) stimulated with LPS and IFN-g was observed by flow cytometry as compared with immature MDDCs (green curves). Red curves represent the isotype controls.



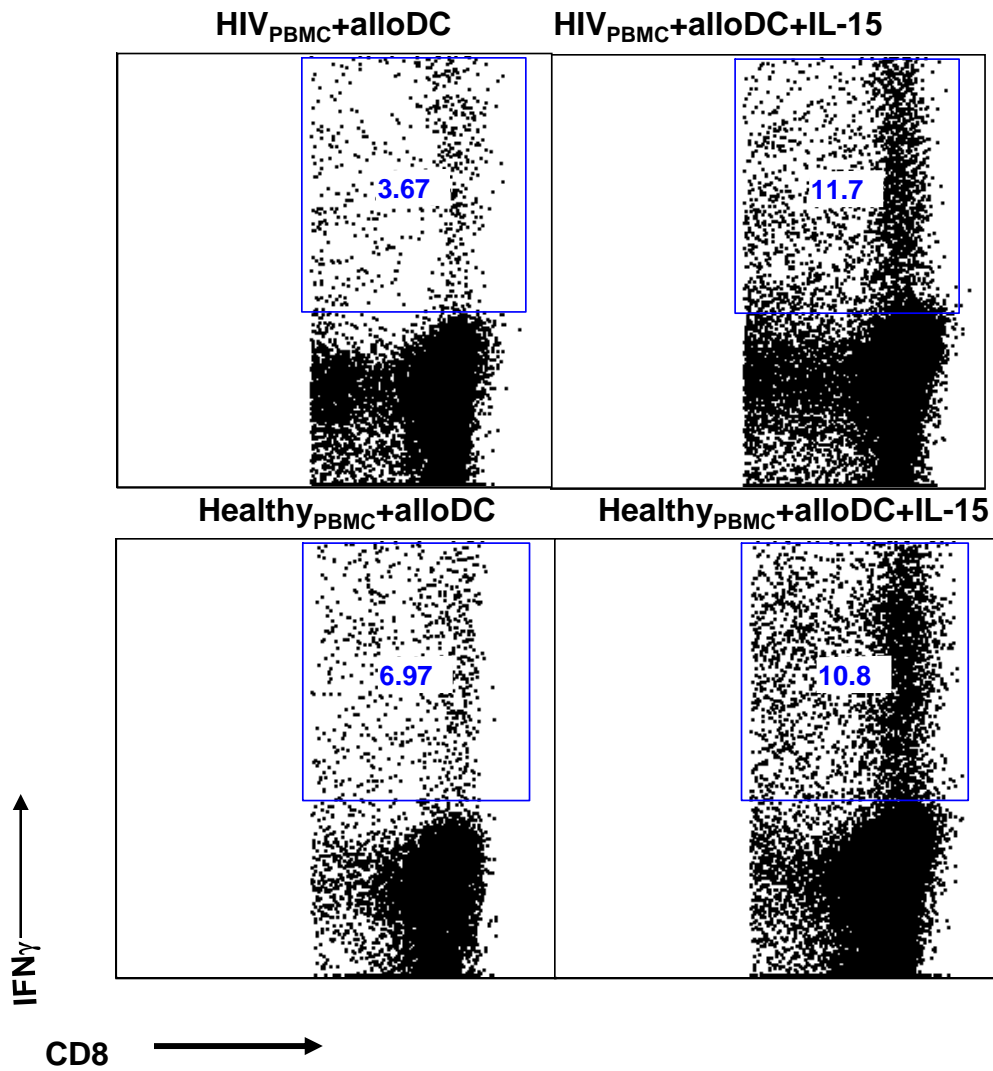
Supplemental Figure 2

IL-2 and IL-15 substitution for CD4⁺ T cell help in recall CD8⁺ T cell responses.
 A representative plot was shown from one donor.



Supplemental Figure 3

IL-15 substitution for CD4⁺ T cell help in primary CD8⁺ T cell responses. For the primary responses, the purified naïve CD8⁺ T cells were used to rule out cross-reactive memory T cells.



Supplemental Figure 4

The CD8⁺ T cell responses of HIV-1 infected patient and healthy donor to allogeneic DCs .
A representative plot was shown from one HIV donor and one healthy donor.