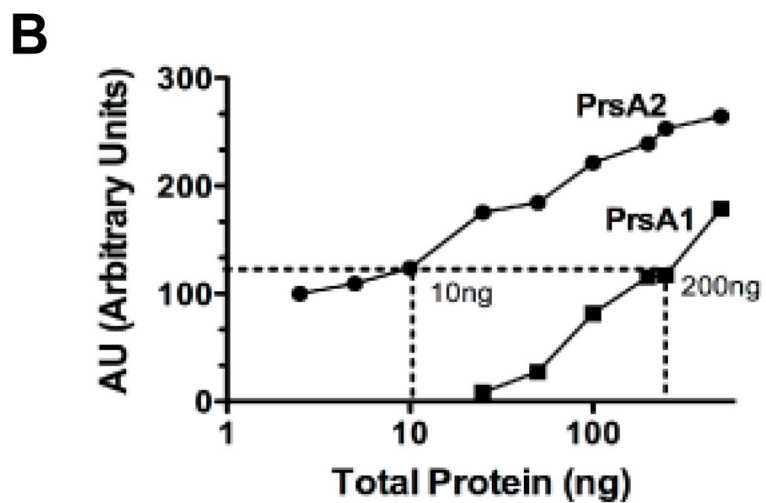
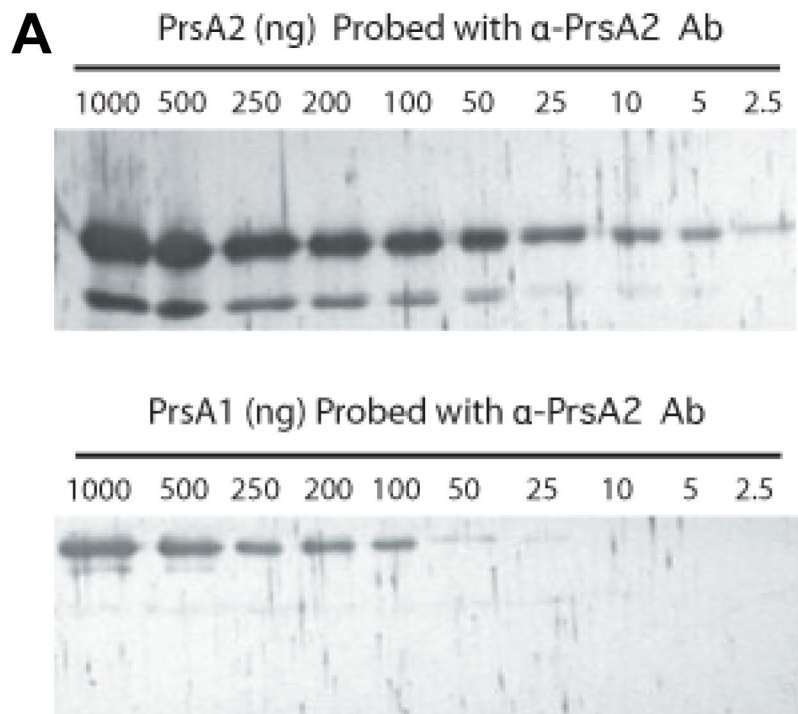


1 **Figure S1. Comparison of PrsA1 and PrsA2 reactivity with rabbit polyclonal**  
2 **antibody directed against PrsA2.** (A) Western blot analysis of decreasing amounts of  
3 purified PrsA2 and PrsA1 using rabbit polyclonal antibody directed against PrsA2. (B)  
4 Comparison of PrsA2 antibody sensitivity for PrsA2 versus PrsA1 based on densitometry  
5 of Western blot shown in panel A.



**Supplementary Table 1.** Oligonucleotides used in this work

<b>PrsA2 (N+C) construct</b>		
NC-a	GCG- <u>GAGCTC</u> -CCTAAAATCAATCAACGAGCTC	(Sacl)
NC-b	TTTTTCAAAGTTGTTTTGTTTGCCAAGTTTCATAGTA	
NC-c	TACTATGAAACTTGGCAAACAAAAACAACCTTTTGAAAAA	
NC-d	GCG- <u>GGTACC</u> -TTCGTTTTATAATC	(KpnI)
<b>P2N-P1P-P1C construct</b>		
P2N-P1P-P1C-a	GCG- <u>GAGCTC</u> -CCTAAAATCAATCAACGAGCTC	(Sacl)
P2N-P1P-P1C-b	GCGAACAGTAATATCTGGTTGCCAAGTTTCATAGTA	(Sacl)
P2N-P1P-P1C-c	TACTATGAAACTTGGCAACCAGATATTACTGTTTCGC	
P2N-P1P-P1C-d	GCG- <u>GGTACC</u> -TGGCGTGTGTTTTTGACG	(KpnI)
<b>P1N-P1P-P2C construct</b>		
P1N-P1P-P2C-a	GCG- <u>GAGCTC</u> -CCTAAAATCAATCAACGAGCTC	(Sacl)
P1N-P1P-P2C-b	TTTTTTTAATTTTGTCAATAAATAAAACACACTCCT	
P1N-P1P-P2C-c	AGGAGTGTGTTTTATTTATTGACAAAATTAATAAAAAA	
P1N-P1P-P2C-d	TTTTTCAAAGTTGTTTTGTTGTTTTCTTGACTAATTG	
P1N-P1P-P2C-e	CAATTAGTCAAGAAAACAACAAAAACAACCTTTTGAAAAA	
P1N-P1P-P2C-f	GCG- <u>GGTACC</u> -TTCGTTTTATAATC	(KpnI)
<b>P1N-P2P-P1C construct</b>		
P1N-P2P-P1C-a	GCG- <u>GAGCTC</u> -CCTAAAATCAATCAACGAGCTC	(Sacl)
P1N-P2P-P1C-b	TTTTTTTAATTTTGTCAATAAATAAAACACACTCCT	
P1N-P2P-P1C-c	AGGAGTGTGTTTTATTTATTGACAAAATTAATAAAAAA	
P1N-P2P-P1C-d	GCTTACAGTAATATCTGGTTCCCACGTTTTGTAGTA	
P1N-P2P-P1C-e	TACTACAAAACGTGGGAACCAGATATTACTGTAAGC	
P1N-P2P-P1C-f	TGCGTAAGTGCCTTTTTCTGCAGGTTTGTCCATTG	
P1N-P2P-P1C-g	CAAATGGACAAACCTGCAGAAAAAGGCACTTACGCA	
P1N-P2P-P1C-h	GCG- <u>GGTACC</u> -TGGCGTGTGTTTTTGACG	(KpnI)
<b>P2N-P2P-P1C construct</b>		
P2N-P2P-P1C-a	GCG- <u>GAGCTC</u> -CCTAAAATCAATCAACGAGCTC	(Sacl)
P2N-P2P-P1C-b	TGCGTAAGTGCCTTTTTCTGCAGGTTTGTCCATTG	
P2N-P2P-P1C-c	CAAATGGACAAACCTGCAGAAAAAGGCACTTAC	
P2N-P2P-P1C-d	GCG- <u>GGTACC</u> -TGGCGTGTGTTTTTGACG	(KpnI)
<b>P1N-P2P-P2C construct</b>		
P1N-P2P-P2C-a	GCG- <u>GAGCTC</u> -CCTAAAATCAATCAACGAGCTC	(Sacl)
P1N-P2P-P2C-b	TTTTTTTAATTTTGTCAATAAATAAAACACACTCCT	
P1N-P2P-P2C-c	AGGAGTGTGTTTTATTTATTGACAAAATTAATAAAAAA	

P1N-P2P-P2C-d	GCTTACAGTAATATCTGGTTCACGTTTTGTAGTA	
P1N-P2P-P2C-e	TACTACAAAACGTGGGAACCAGATATTACTGTAAGC	
P1N-P2P-P2C-f	GCG- <u>GGTACC</u> -TTCGTTTTATAATC	(KpnI)
<b>P2N-P1P-P2C construct</b>		
P2N-P1P-P2C-a	GCG- <u>GAGCTC</u> -CCTAAAATCAATCAACGAGCTC	(Sacl)
P2N-P1P-P2C-b	GCGAACAGTAATATCTGGTTGCCAAGTTTCATAGTA	
P2N-P1P-P2C-c	TACTATGAAACTTGGCAACCAGATATTACTGTTCGC	
P2N-P1P-P2C-d	TTCAAAAGTTGTTTTTGTGTTTTCTTGACTAATTG	
P2N-P1P-P2C-e	CAATTAGTCAAGAAAACAACAAAACAACCTTTTGAA	
P2N-P1P-P2C-f	GCG- <u>GGTACC</u> -TTCGTTTTATAATC	(KpnI)
<b>PrsA2 (D174A), (F77A), (F77A + F102A) constructs</b>		
174-D to A	Phos-GGCAACCAGATATTACTGTAAGCGCTATTCTTGT AGCTGATGAAAACA	
77-F to A	Phos-AGCGACGAAGATGTTGACAAGAAAGCCAACGAG TATAAATCACAATACGGA	
77-A to F	Phos-AGCGACGAAGATGTTGACAAGAAATTCAACGAG TATAAATCACAATACGGA	
105-Q to A	Phos-TTAACTGAGAAATCTTTCAAAGCGCACTTAAGT ACAACCTGTTAGTTCAA	
102-F to A	Phos-CAAAGTGGCTTAACTGAGAAATCTGCCAAAAGC CAACTTAAGTACAAC	
pPL2 common	Phos-AAGTAGATGCTTTTTTCACACTAAAACAGATG AAAATACCACAAATT	
<b>PrsA2 (DKPATKTTFEKDKKA → VKKTEKGTYAKEKAN)</b>		
P1→P2 #3 - a	GCG- <u>GAGCTC</u> -CCTAAAATCAATCAACGAGCTC	(Sacl)
P1→P2 #3 - b	TACGTTGGCTTTTTCTTTTGCGTAAGTGCCTTTTTCTGTTTTCTT GTCCATTTGGATGATGTGGTA	
P1→P2 #3 - c	AAGAAAACAGAAAAGGCACTTACGCAAAAAGAAAAGCCAAC GTAAAAGCTTCTTACCTTGAGTCTCAA	
P1→P2 #3 - d	GCG- <u>GGTACC</u> -TTCGTTTTATAATC	(KpnI)
<b>PrsA2 (QKTLKKEYK → TAALKKELK)</b>		
P1→P2 #4 - a	GCG- <u>GAGCTC</u> -CCTAAAATCAATCAACGAGCTC	(Sacl)
P1→P2 #4 - b	TTTTAACTCTTTTTTGAGTGCAGCTGTCATGTTCTC AGTAGTTAATTGAGA	
P1→P2 #4 - c	ACAGCTGCACTCAAAAAGAGTTAAAAGATGCT AACGTGAAAGTGGAAGAC	
P1→P2 #4 - d	GCG- <u>GGTACC</u> -TTCGTTTTATAATC	(KpnI)
<b>PrsA2, PrsA2 (D174A), PrsA2 (N+C), PrsA1 6-his constructs</b>		
PrsA2-6hisA	GCG- <u>CCATGG</u> -CC-TGCGGTGGCGGCGGAGAT	(NcoI)

PrsA2-6hisB	GCG- <u>AGATCT</u> -TTTAGATGAATCGCTATC	(BglII)
PrsA1-6hisA	GCG- <u>CCATGG</u> -CC-TGTGGAAGTAGCGCTGTT	(NcoI)
PrsA1-6hisB	GCG- <u>AGATCT</u> -GTTAGATGTAGTCGTTGA	(BglII)