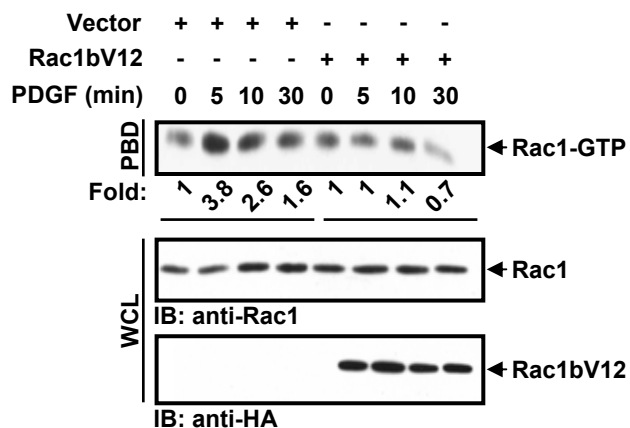
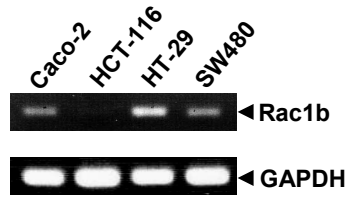


Supplementary Figure 1, Bar-Sagi



Supplementary Figure 1. Rac1b inhibits Rac1 activation. HeLa cells were transfected with vector or HA-tagged Rac1bV12 serum-starved and then stimulated with PDGF (50ng/ml) for the indicated intervals. GTP-bound Rac1 was isolated by the PBD pull-down assay and detected by immunoblotting (IB) with anti-Rac1 antibodies. Total Rac1 and expression of Rac1bV12 in whole cell lysates (WCL) were detected by IB with anti-Rac1 antibodies. To calculate fold change, the levels of activated Rac1 were quantified by densitometry scanning and normalized to the levels of total Rac1. The results are representative of three independent experiments. WCL, whole cell lysates.

Supplementary Figure 2, Bar-Sagi



Total RNA was isolated from each cell line and then reverse transcribed using oligo-dT primers. The resulting cDNA was then amplified with either primers directed to the 5'-untranslated region of Rac1 and 3'-in-frame insertion region of Rac1b for Rac1b or GAPDH primers as a control.