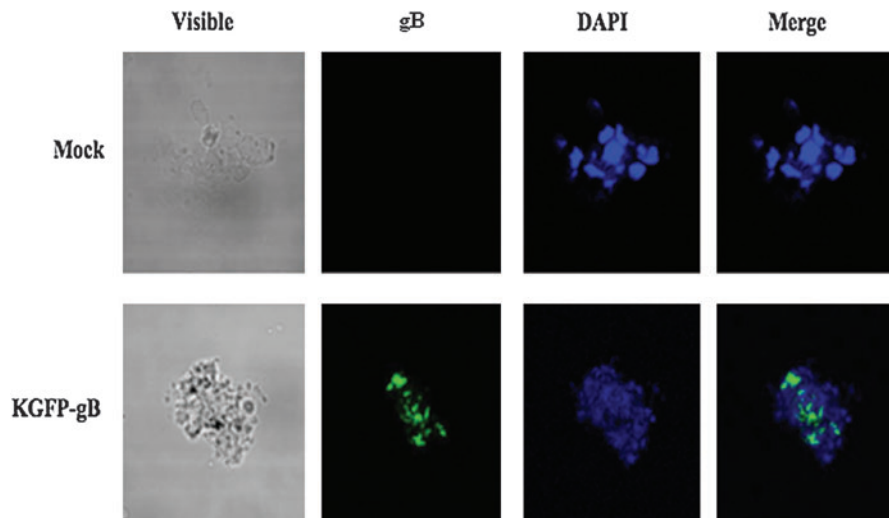
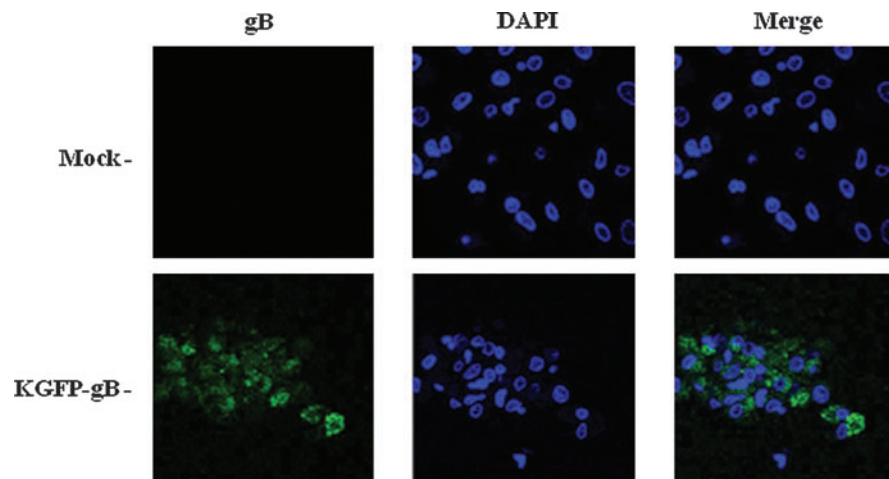


Supplementary Data



SUPPLEMENTARY FIG. 1. Human monocytes are productively infected with HSV-1. Human monocytes were isolated and infected with fluorescent HSV-1 (KGFP-gB) (MOI = 5) for 2 h at 37°C. The cells were then extensively washed and put in culture for 18 h. After this time, the cells were harvested and permeabilized, and DNA was stained with DAPI. The fluorescence was observed by confocal microscopy. The experiment was repeated with three different donors, and the figure shows results from a representative experiment.



SUPPLEMENTARY FIG. 2. Monocyte-derived macrophages are productively infected with HSV-1. Monocytes were isolated from PBMCs by their adhesion onto plastic dishes, and differentiated into macrophages by incubating them in RPMI 10% FCS, 5% human AB serum, and 2 ng/mL of GM-CSF. After 5 d, monocyte-derived macrophages were infected with a fluorescent HSV-1 (KGFP-gB) (MOI = 5) for 2 h at 37°C. The cells were then extensively washed and put in culture for 18 h. After this time, the cells were harvested and permeabilized, and DNA was stained with DAPI. The fluorescence was observed by confocal microscopy. The experiment was repeated with three different donors, and the figure shows results from a representative experiment.