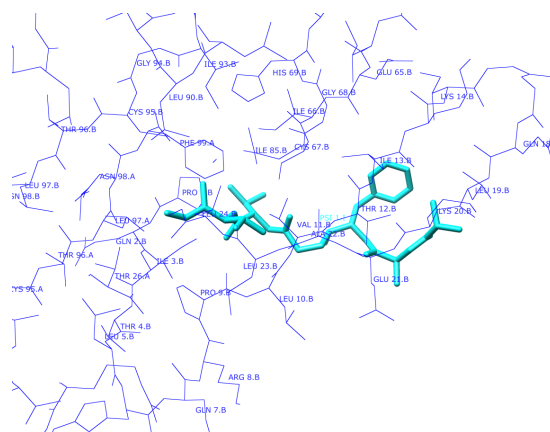
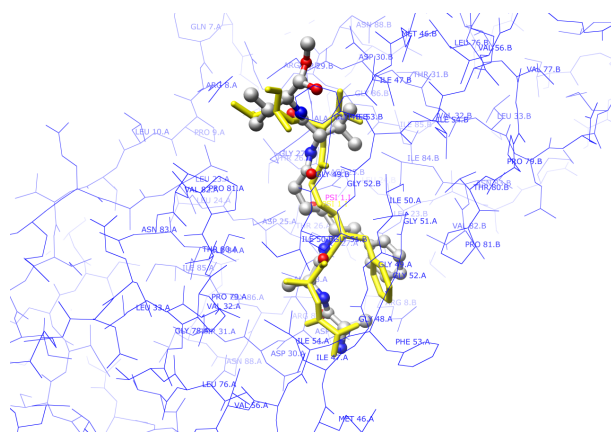
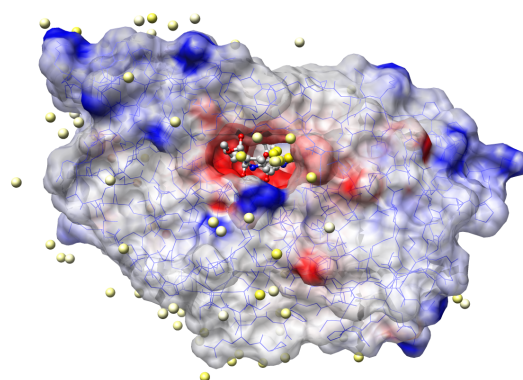
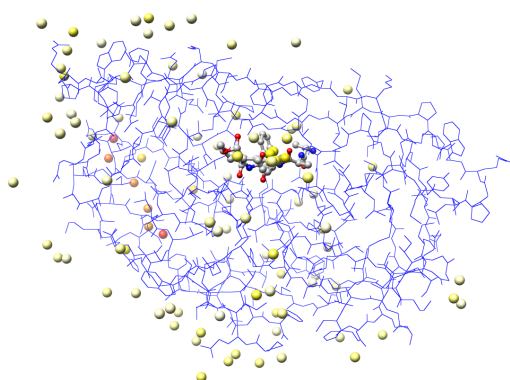
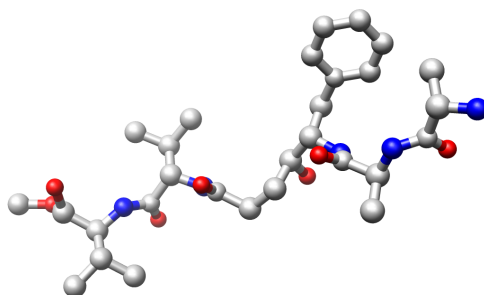


1aaq

source: *Homo sapiens*

protein: HIV-1 protease

ligand: PSI inhibitor

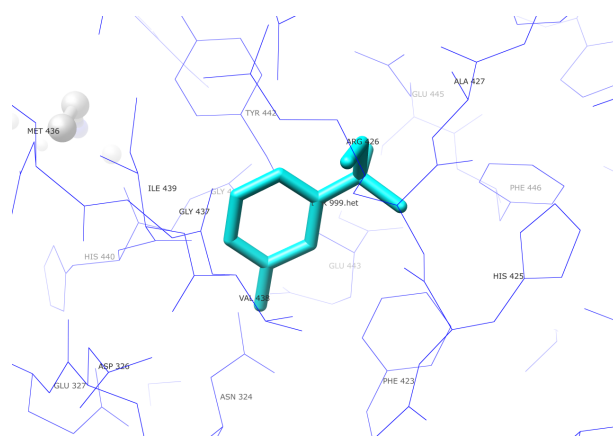
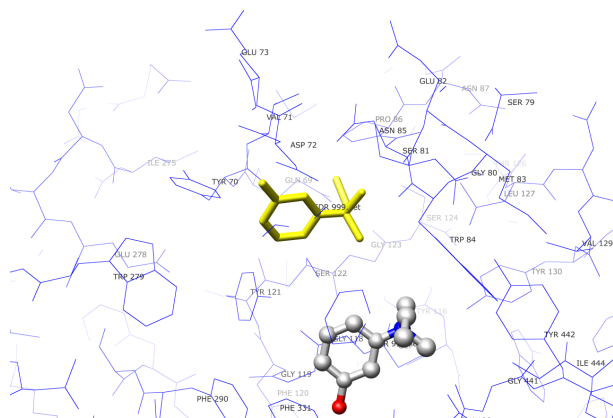
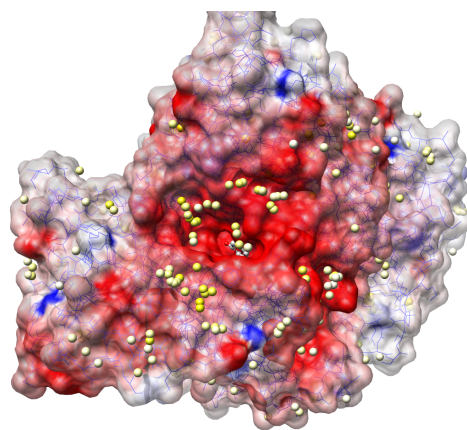
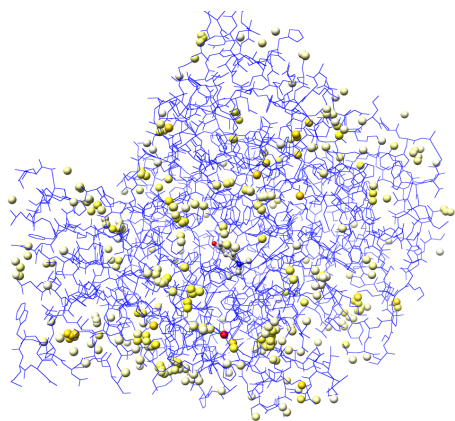
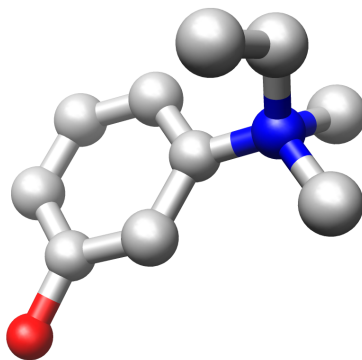


1ack

source: *Torpedo californica*

protein: Acetylcholinesterase

ligand: EDR inhibitor

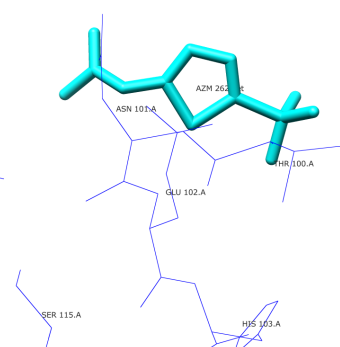
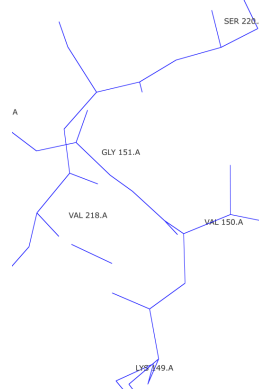
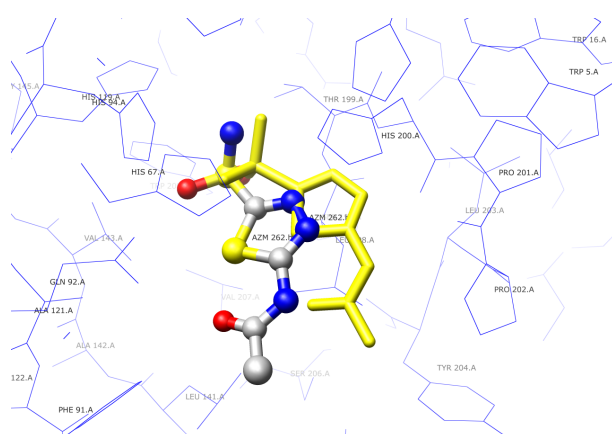
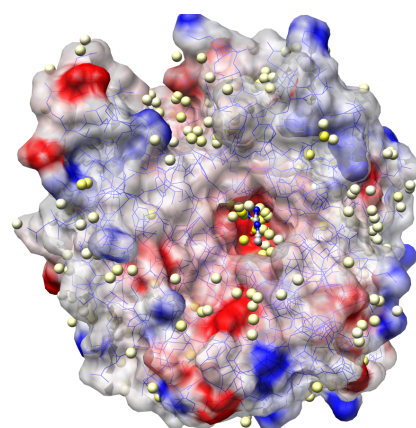
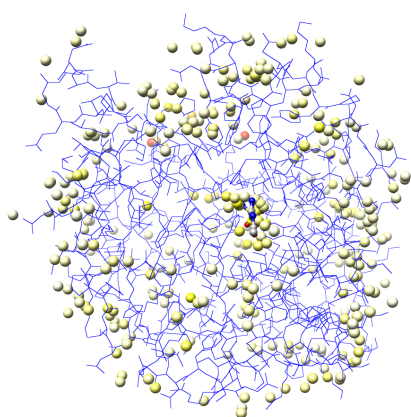
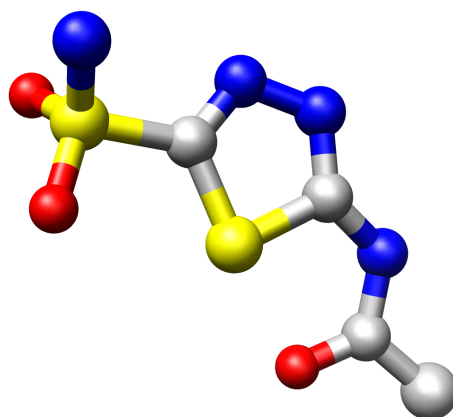


1azm

source: *Homo sapiens*

protein: Carbonic anhydrase I

ligand: AZM inhibitor sulfonamide

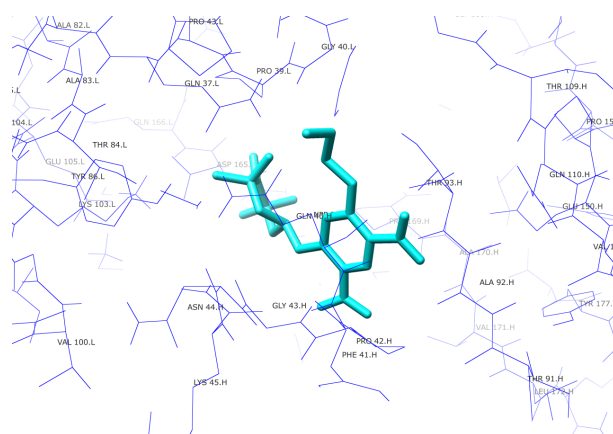
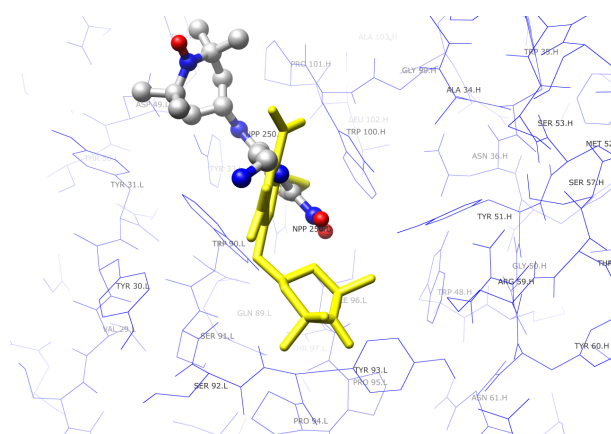
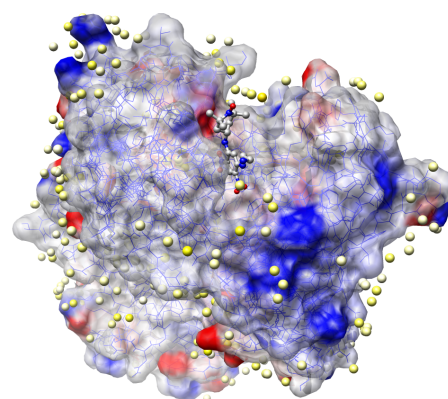
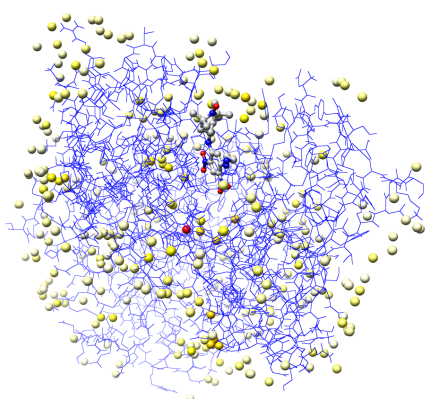
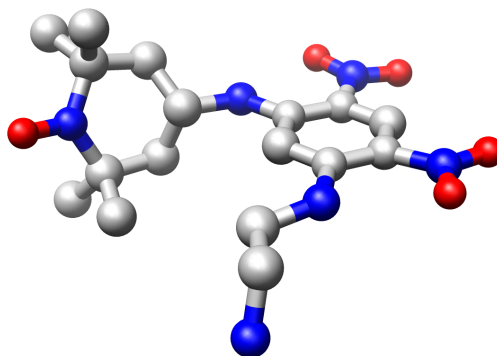


1baf

source: *Mus musculus*

protein: Monoclonal antibody AN2 Fab fragment

ligand: NPP hapten

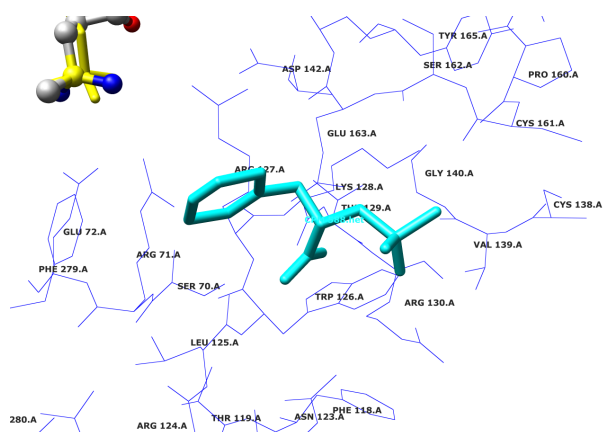
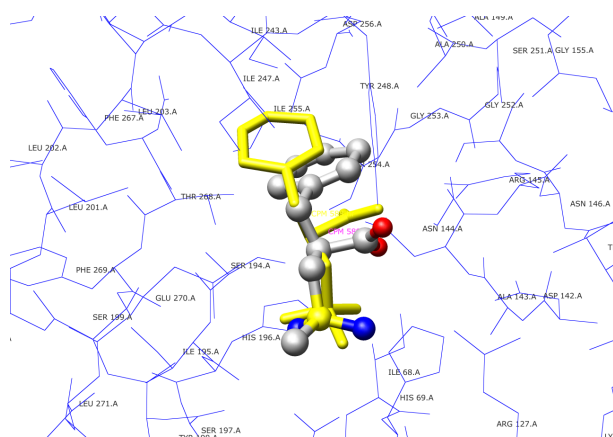
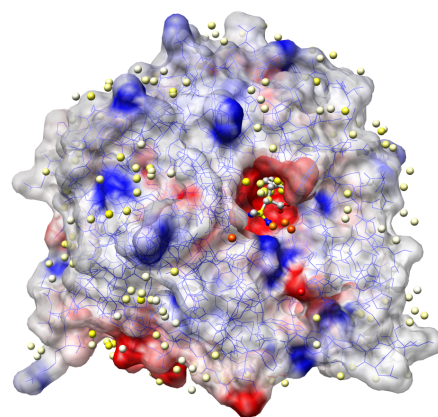
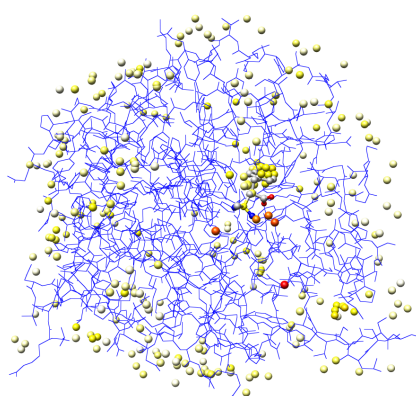
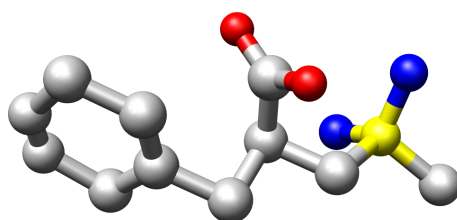


1cps

source: *Bos taurus*

protein: Carboxypeptidase A1 precursor

ligand: CPM inhibitor

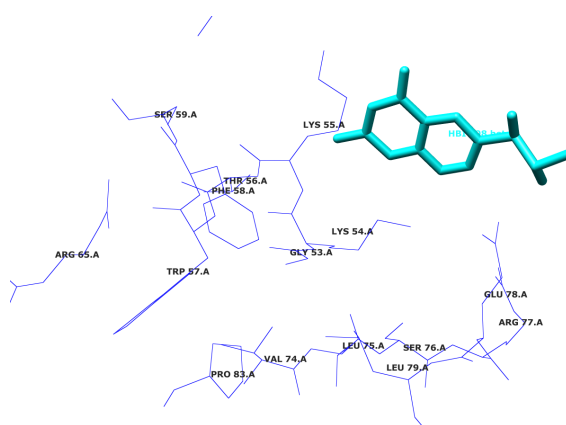
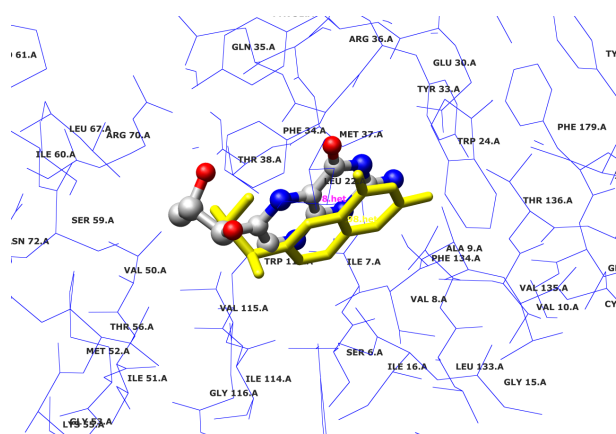
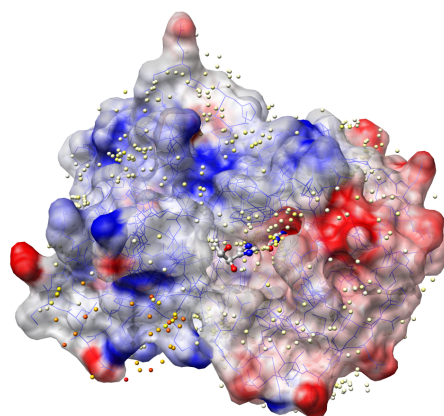
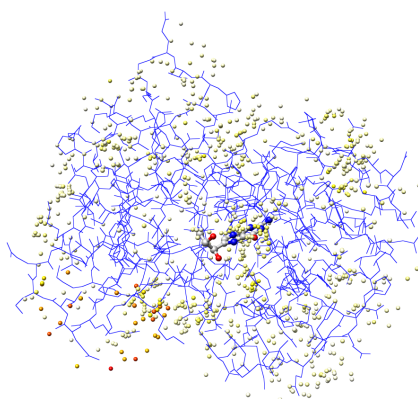
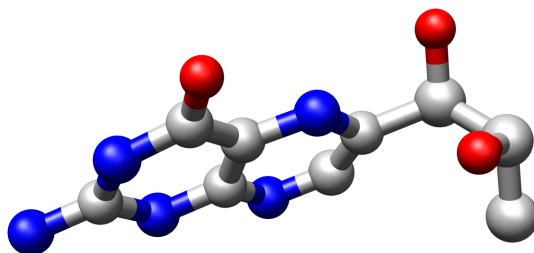


1dr1

source: *Gallus gallus*

protein: Dihydrofolate reductase

ligand: HBI biopterin

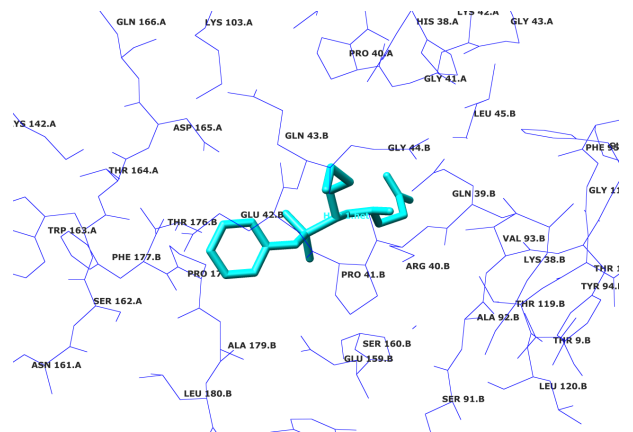
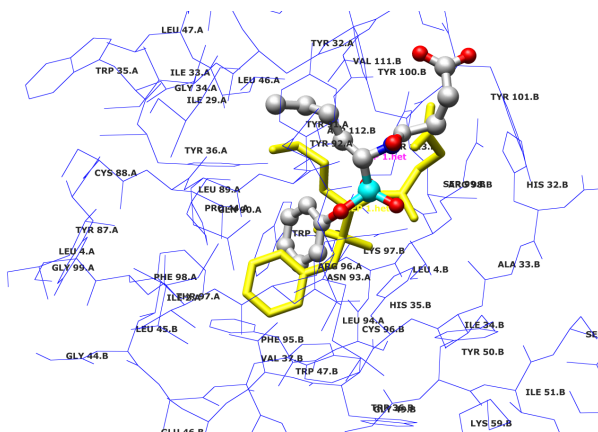
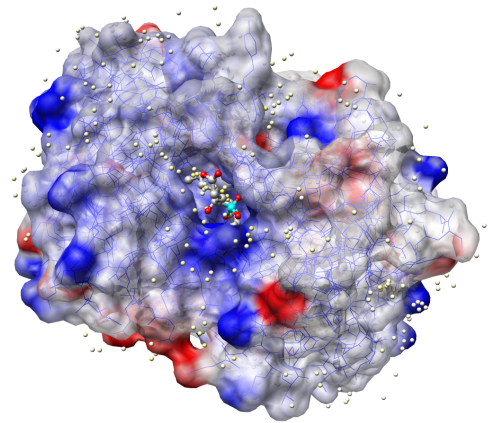
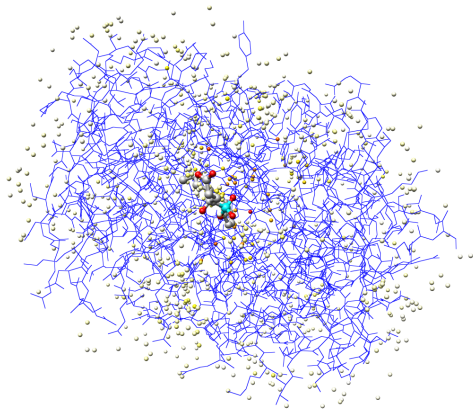
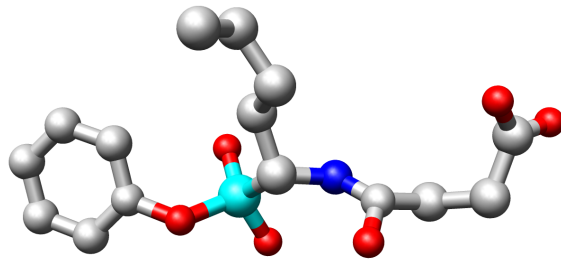


1eap

source: *Mus musculus*

protein: Immunoglobulin 17E8 Fab fragment

ligand: HEP hapten

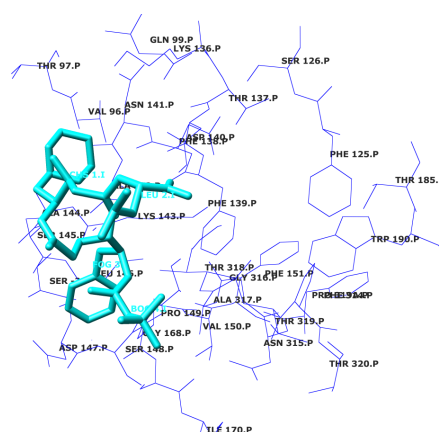
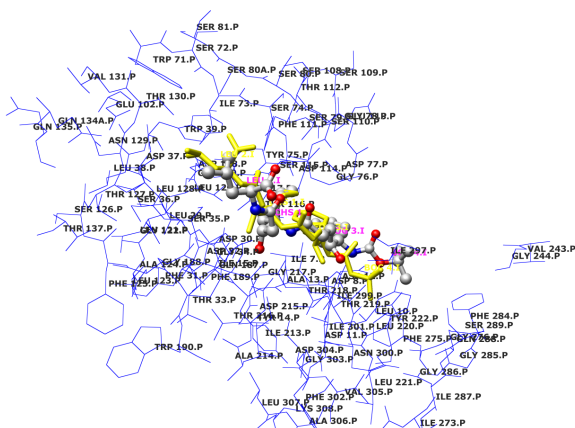
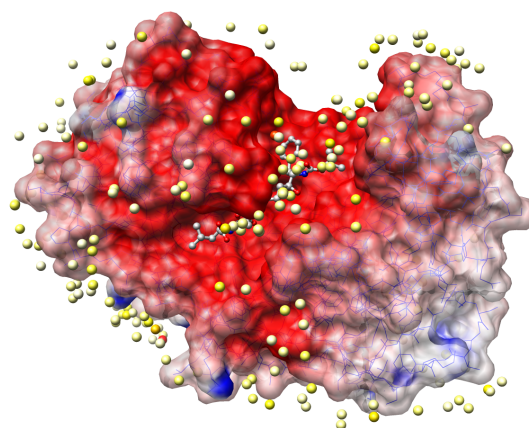
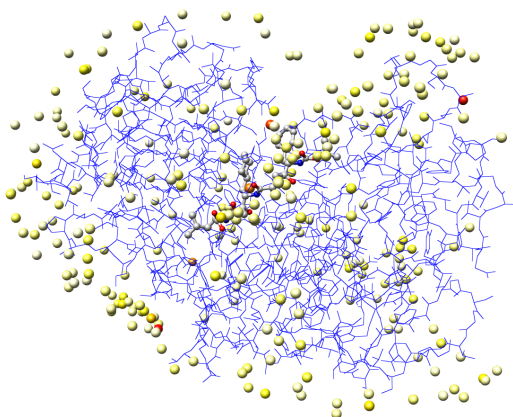
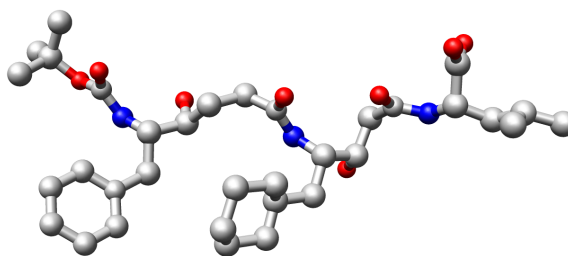


1eed

source: not given (fungus)

protein: Endothiapepsin

ligand: BOC-FOG-CHS-LEU inhibitor

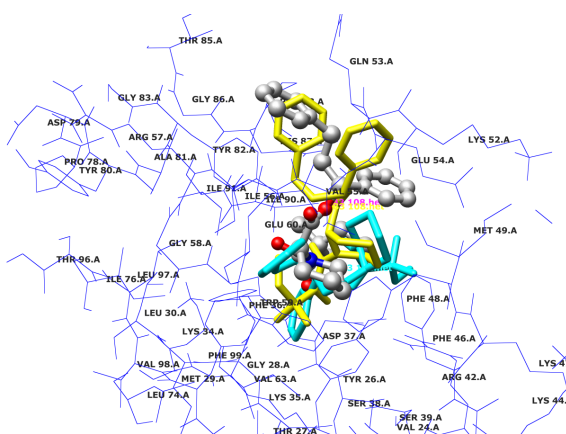
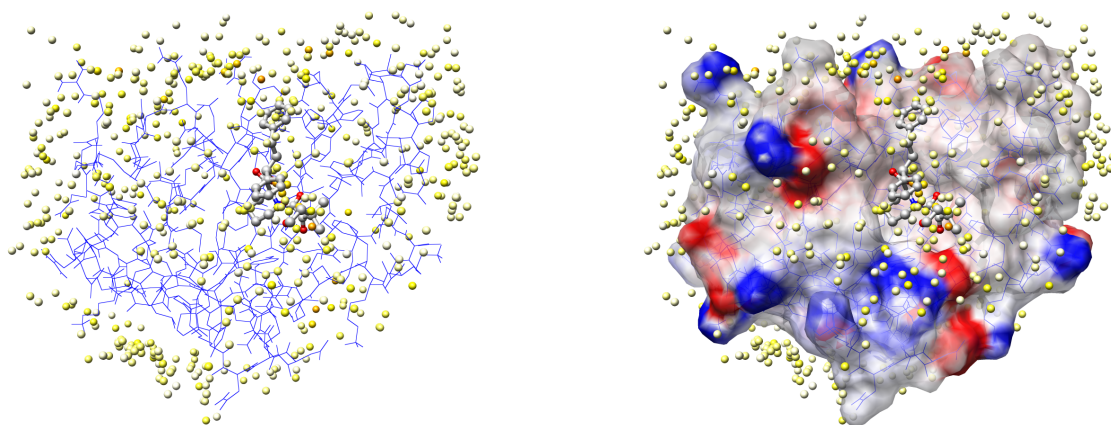
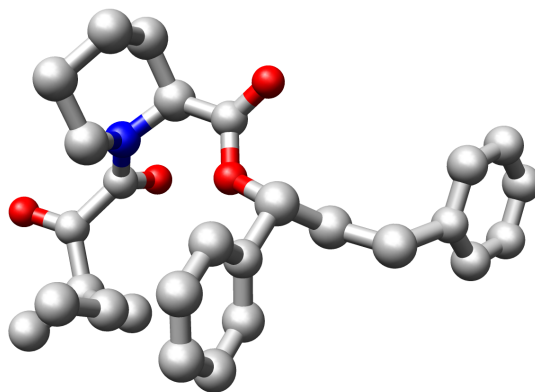


1fkg

source: *Homo sapiens*

protein: FKBP12

ligand: SB3 inhibitor

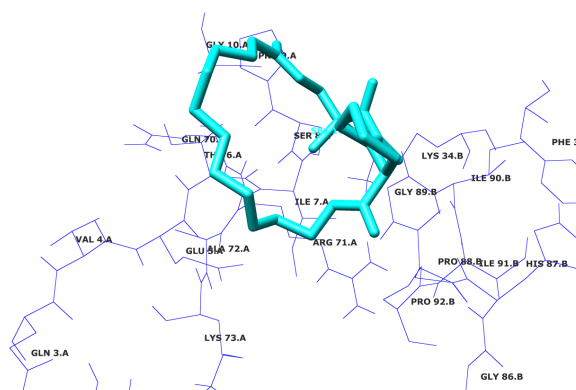
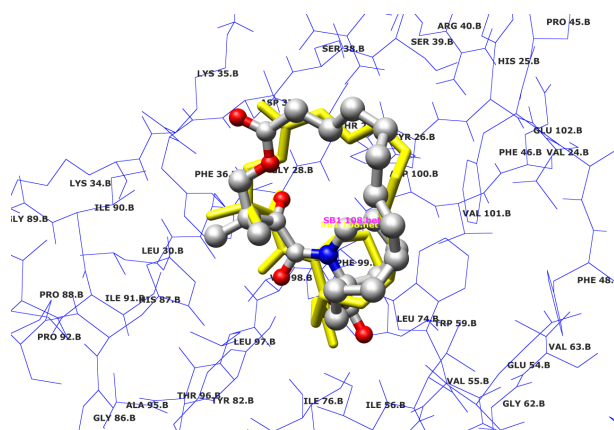
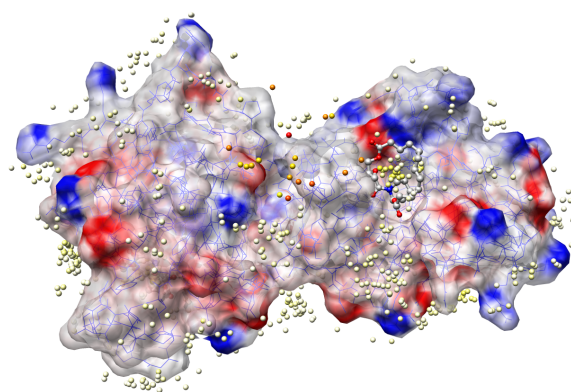
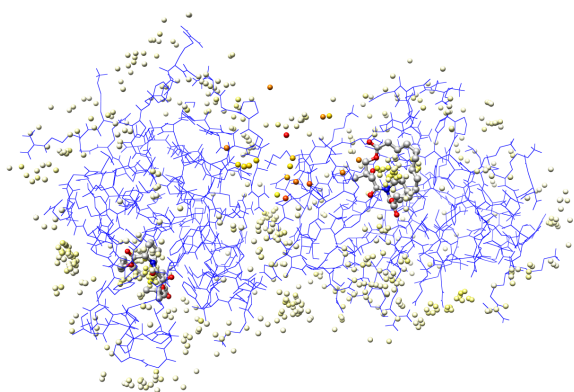
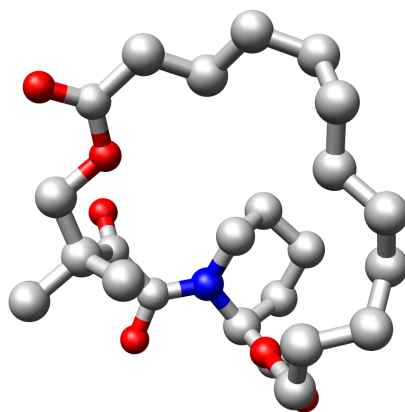


1fki

source: *Homo sapiens*

protein: FKBP12

ligand: SB1 inhibitor

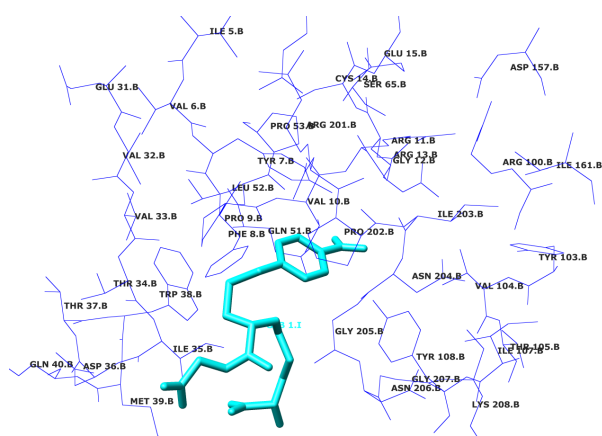
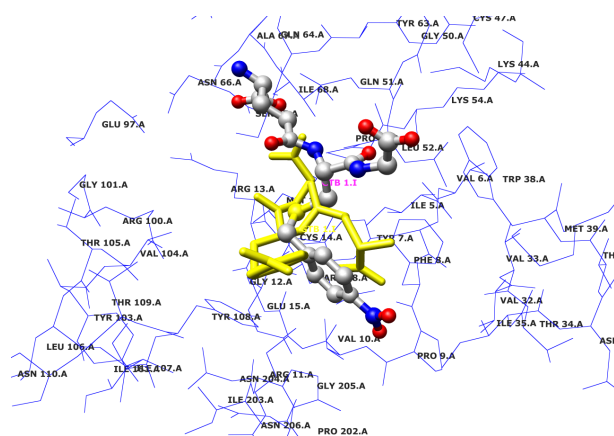
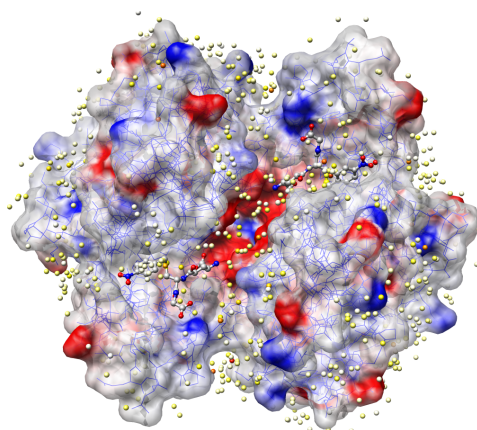
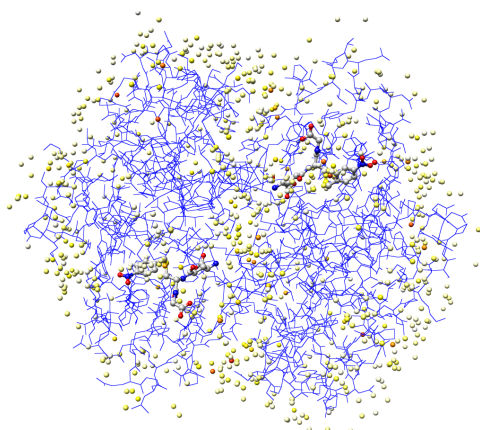
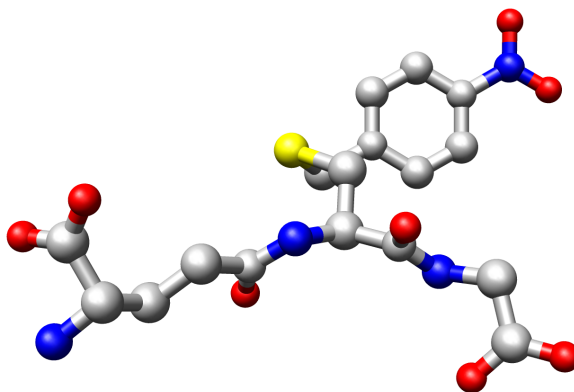


1glq

source: *Mus musculus*

protein: Glutathione S-transferaze

ligand: GTB inhibitor

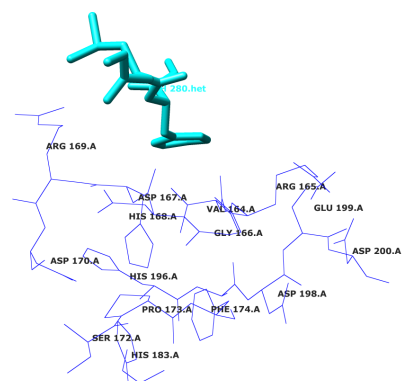
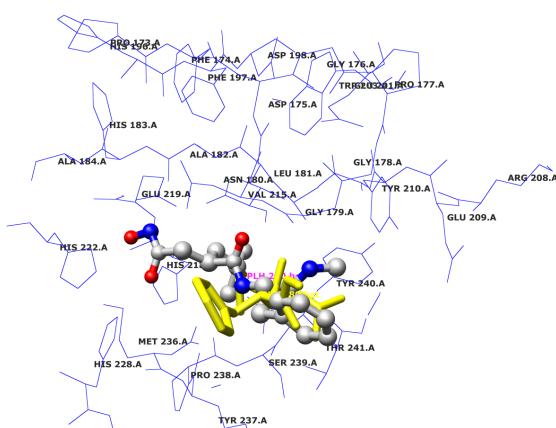
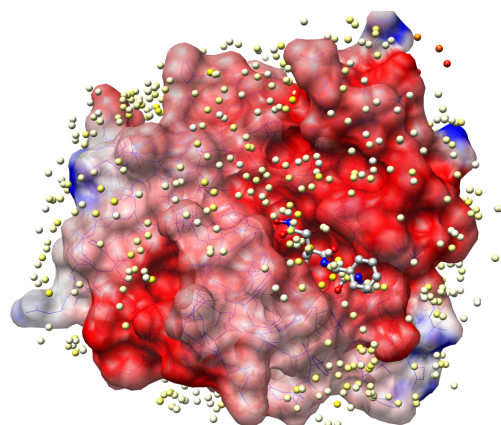
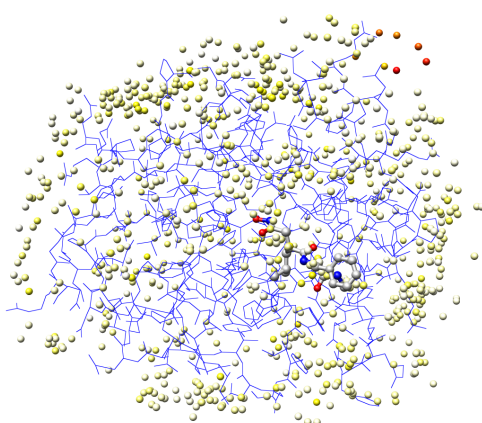
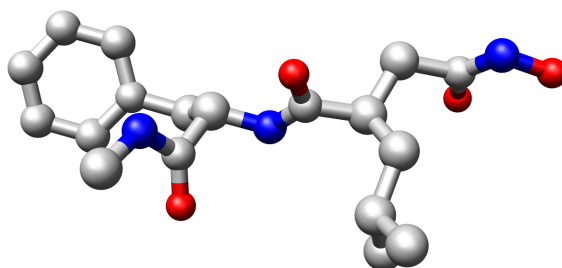


1hfc

source: *Homo sapiens*

protein: Fibroblast collagenase

ligand: PLH inhibitor

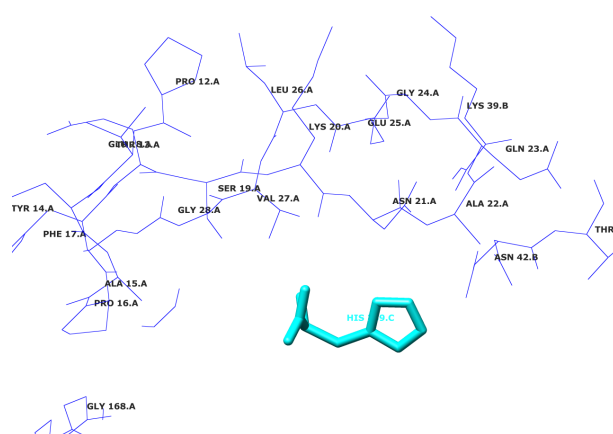
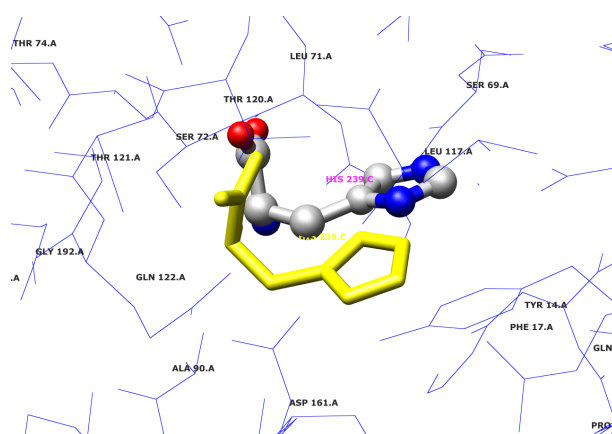
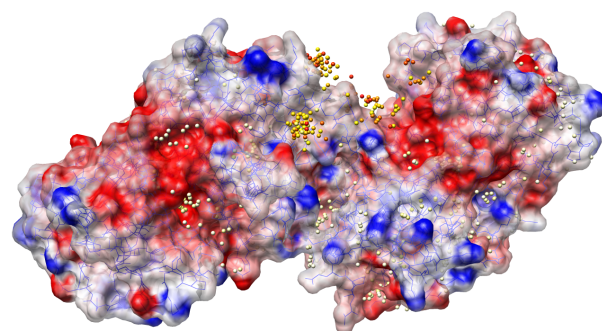
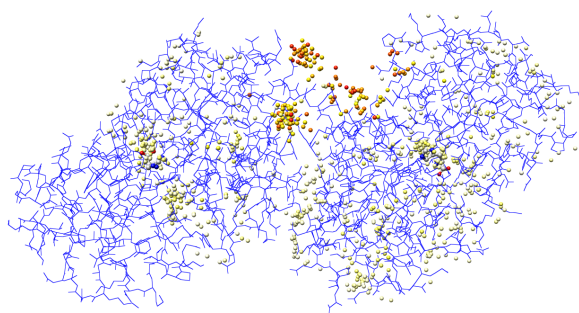
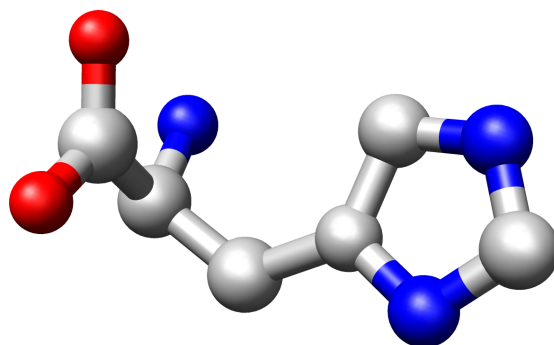


1hsl

source: *Escherichia coli*

protein: Histidine-binding protein

ligand: HIS histidine

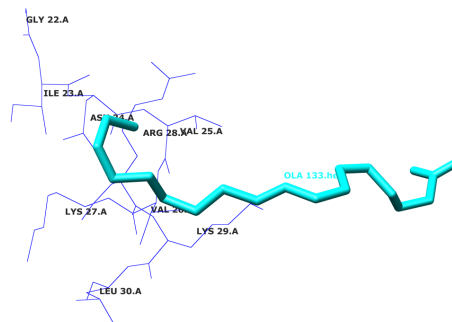
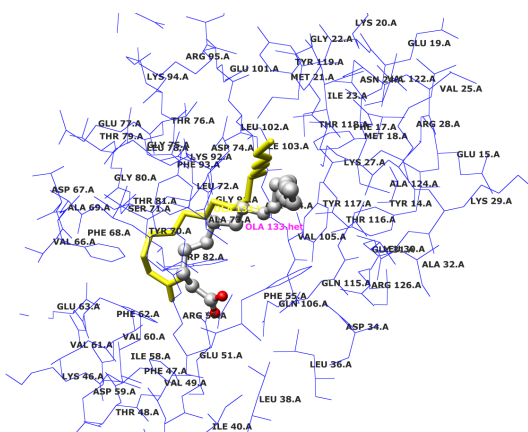
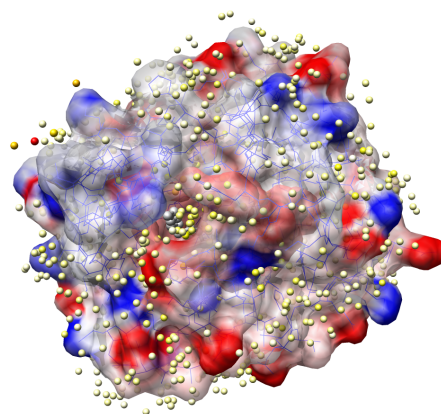
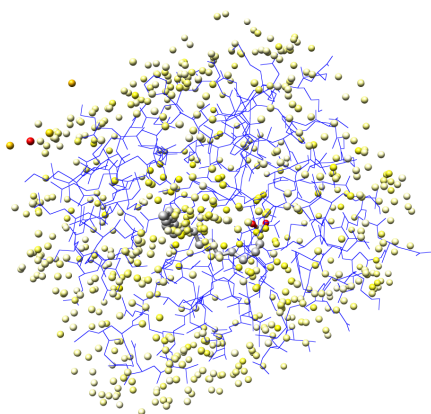
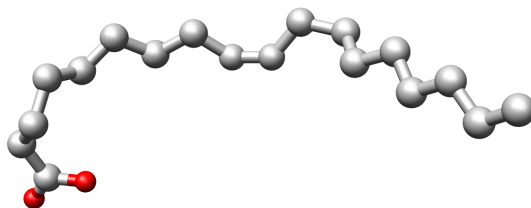


1icn

source: *Rattus norvegicus*

protein: FABP

ligand: OLA oleic acid

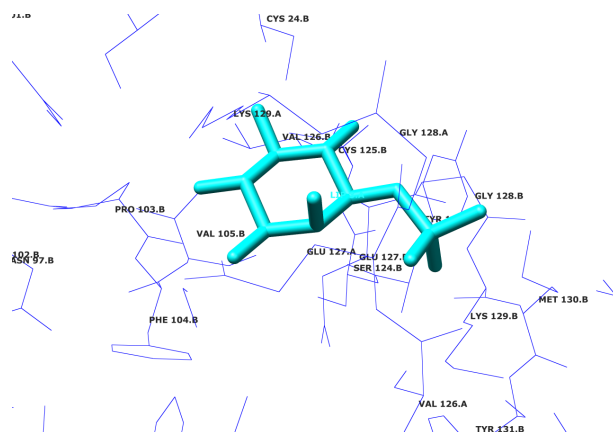
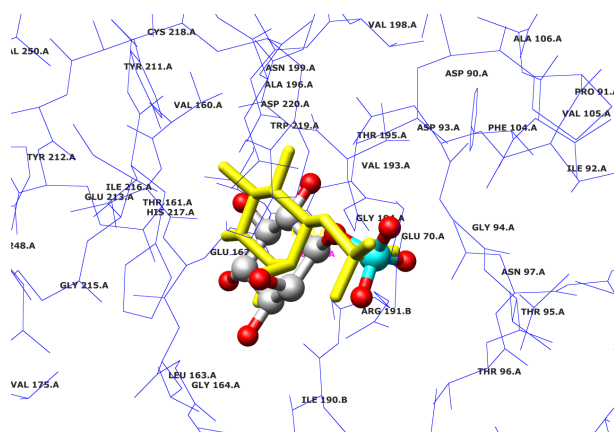
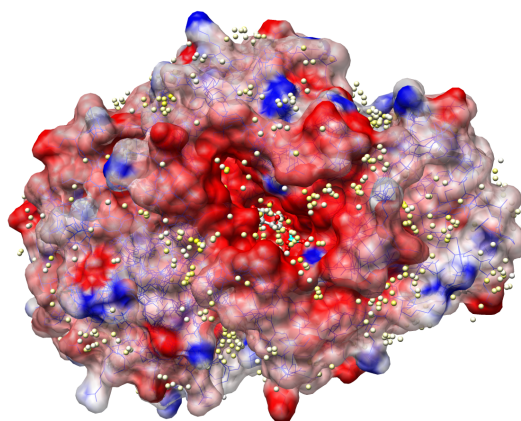
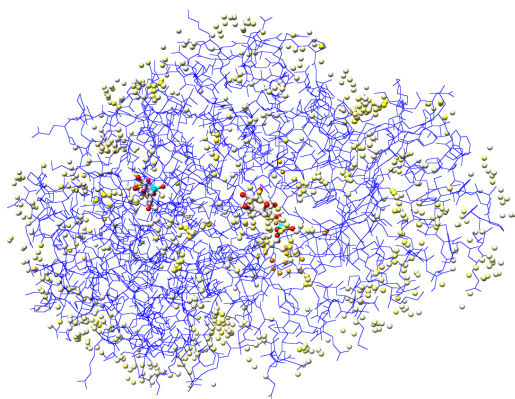
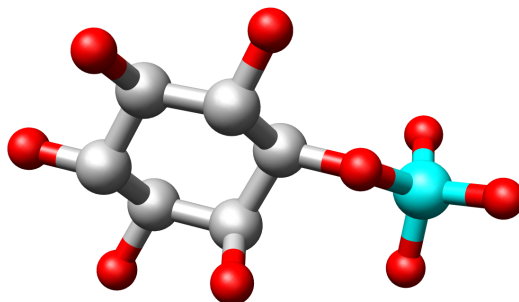


1imb

source: *Homo sapiens*

protein: Inositol monophosphatase

ligand: LIP substrate

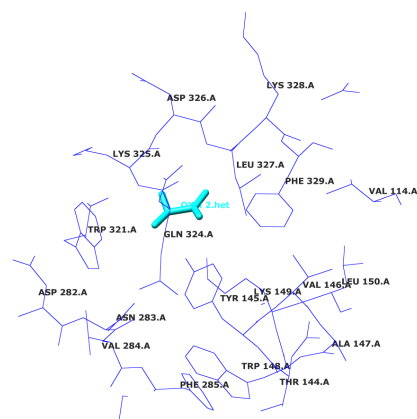
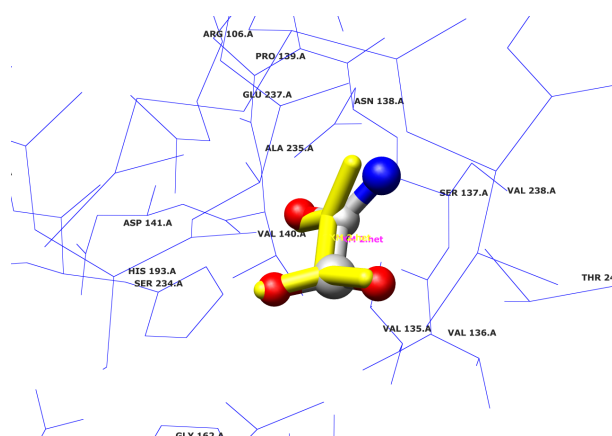
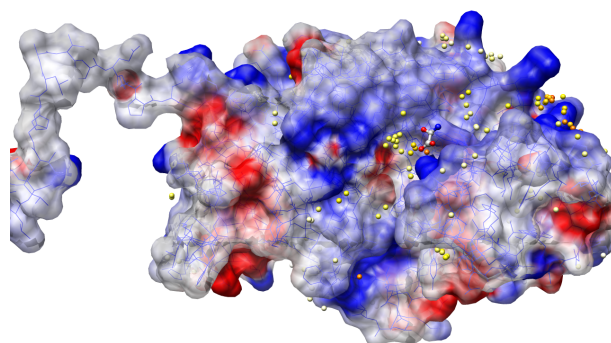
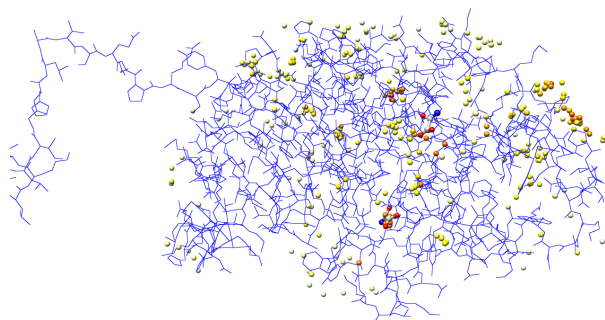
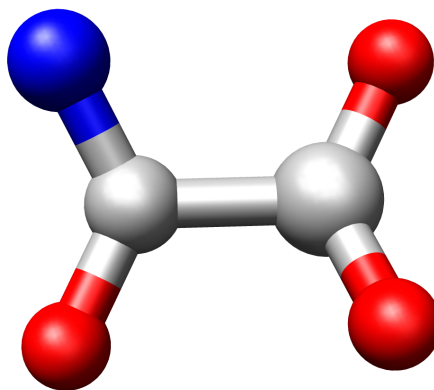


1ldm

source: *Squalus acanthius*

protein: Lactate dehydrogenase

ligand: OXM oxamic acid

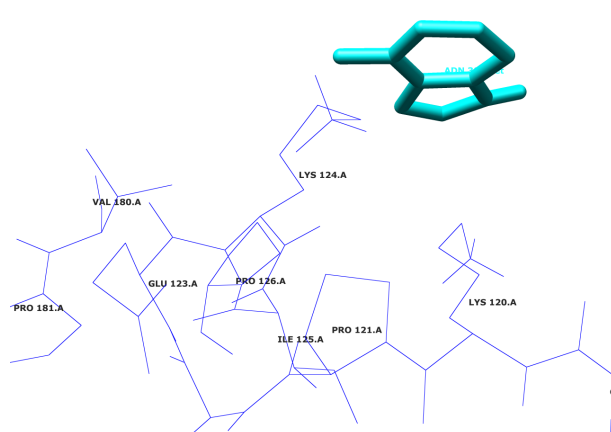
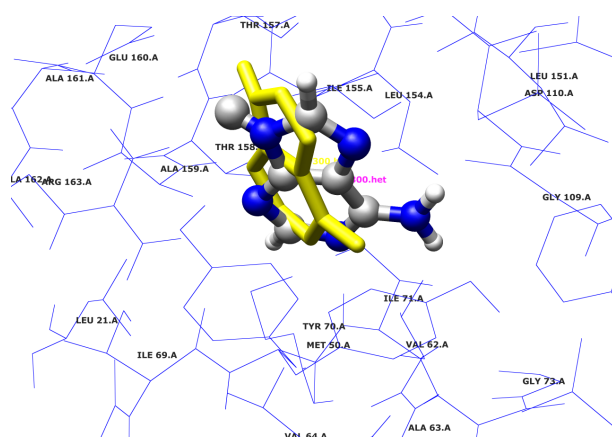
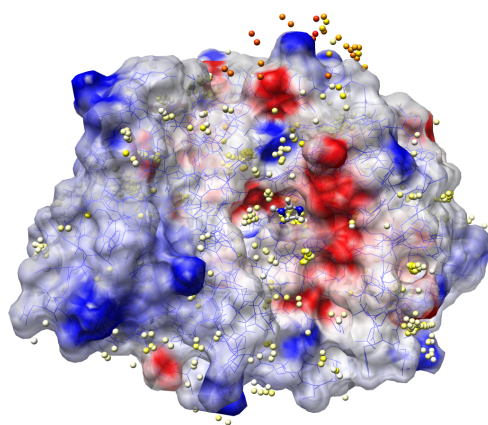
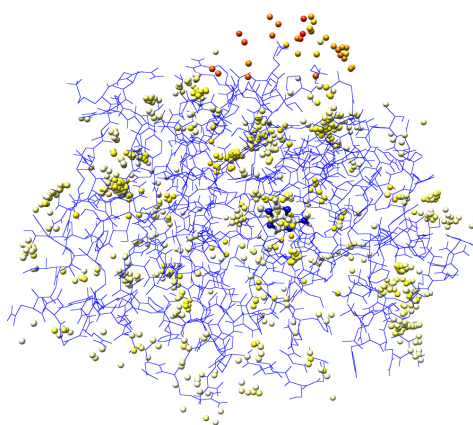
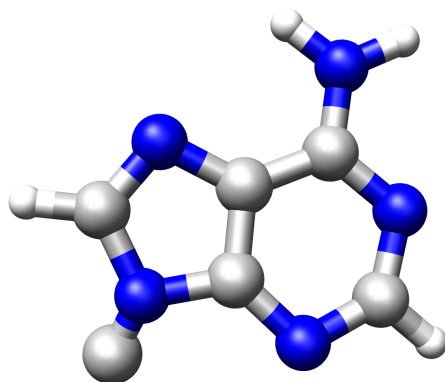


1mrg

source: *Momordica charantia*

protein: Ribosome-inactivating protein

ligand: ADN adenosine

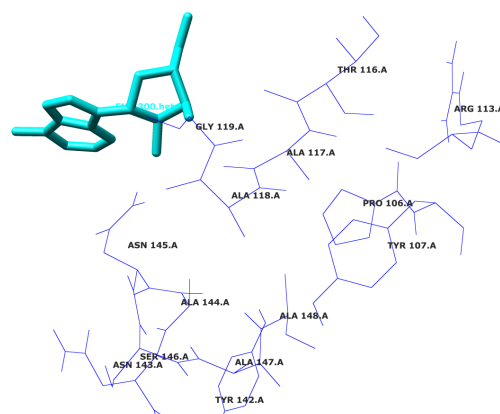
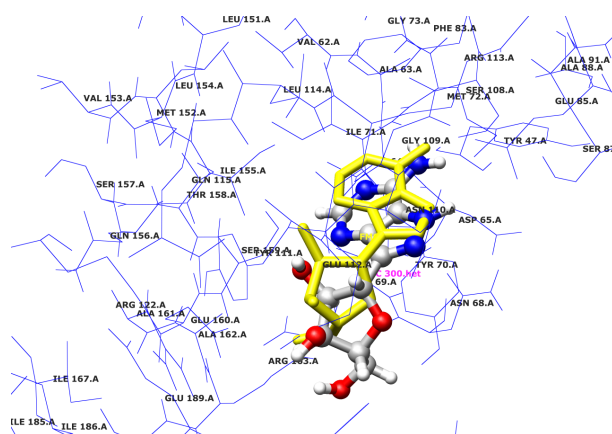
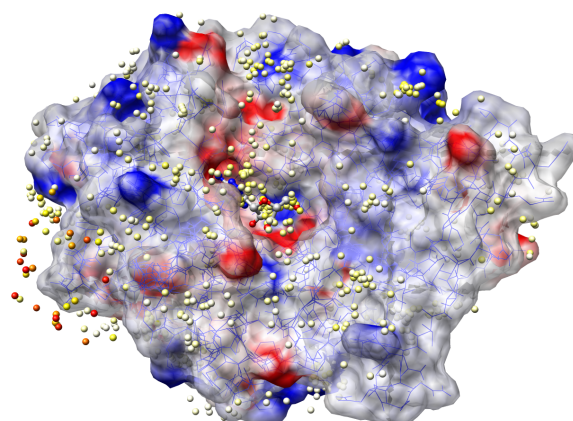
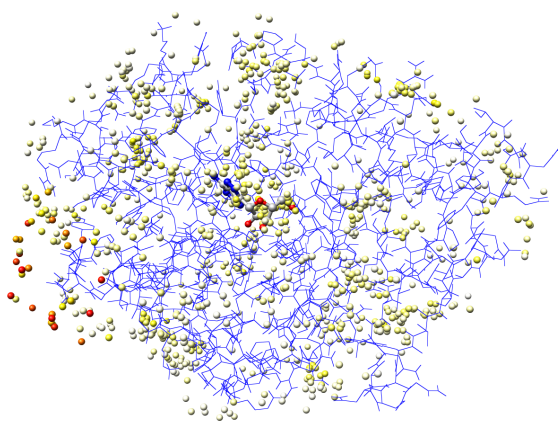
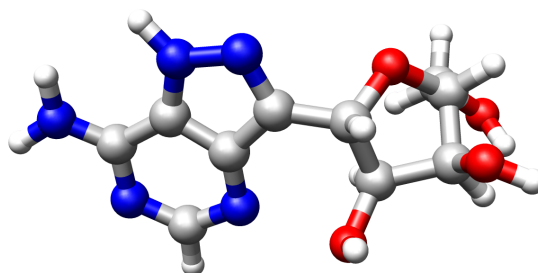


1mrk

source: *Momordica charantia*

protein: Ribosome-inactivating protein

ligand: FMC formycin

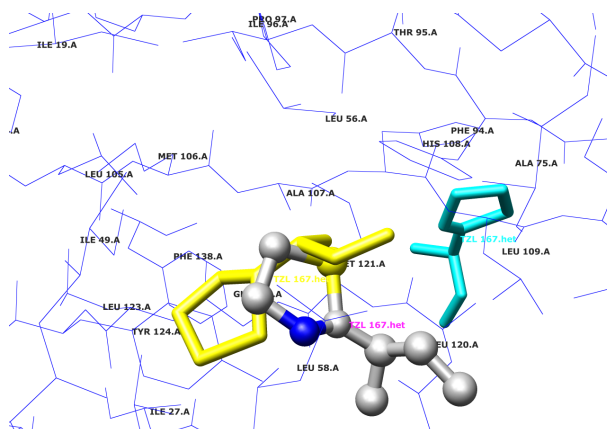
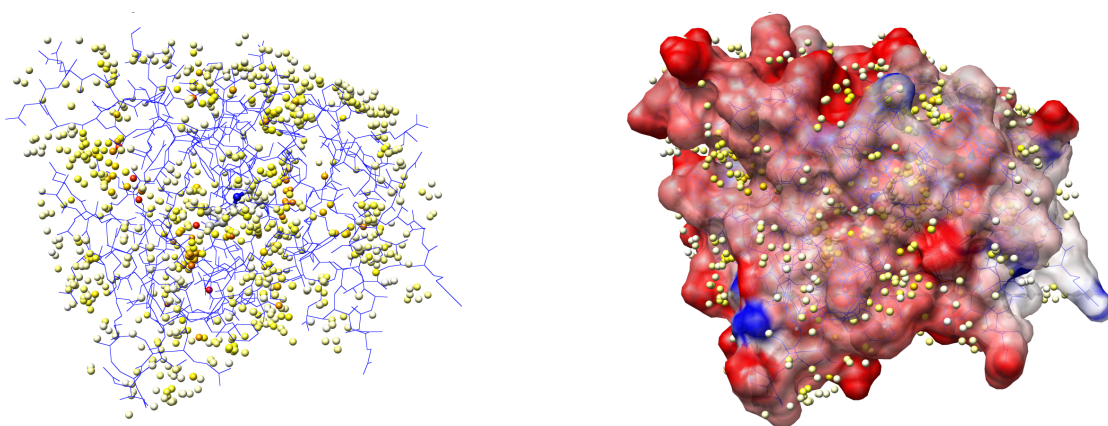
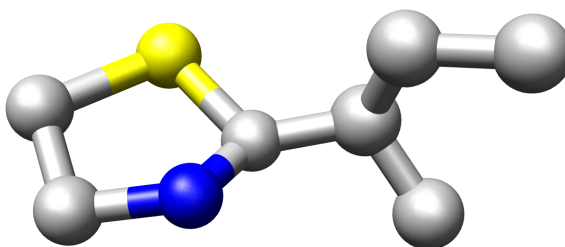


1mup

source: *Mus musculus*

protein: Pheromone-binding protein

ligand: TZL thiazole

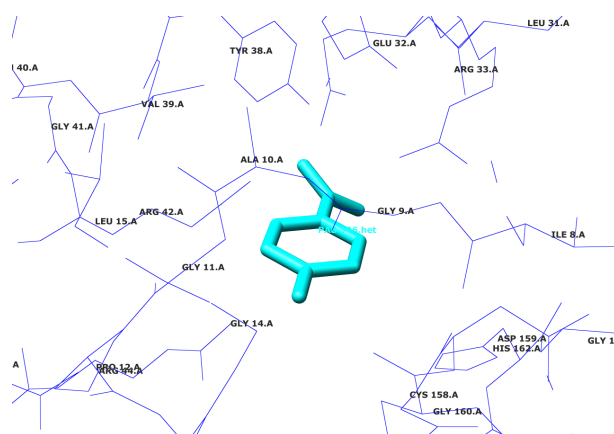
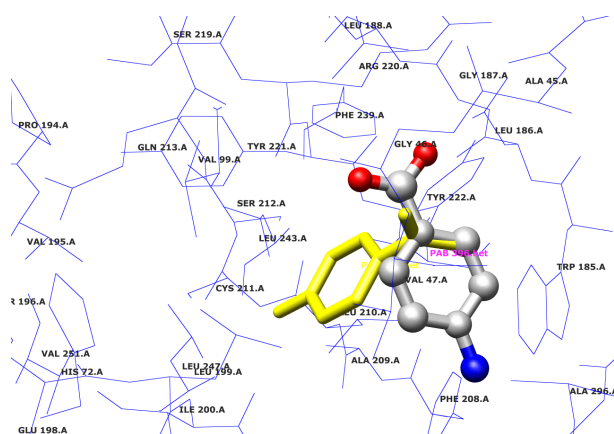
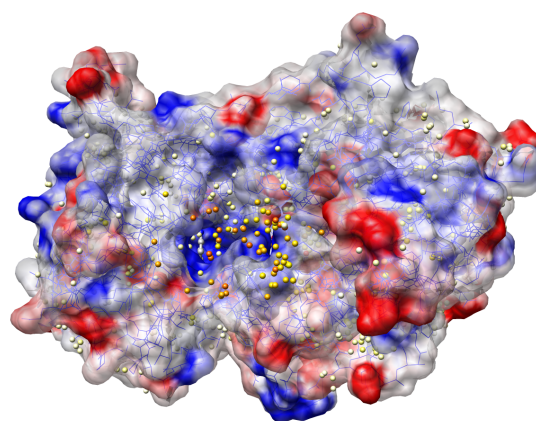
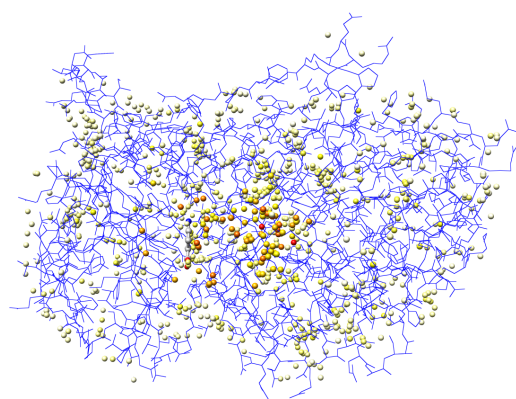
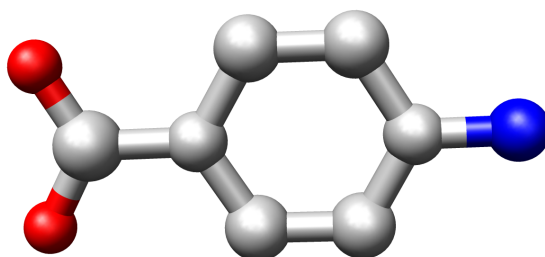


1pbd

source: *Pseudomonas fluorescens*

protein: Hydroxylase

ligand: PAB aminobenzoic acid

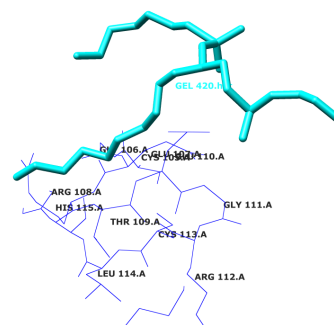
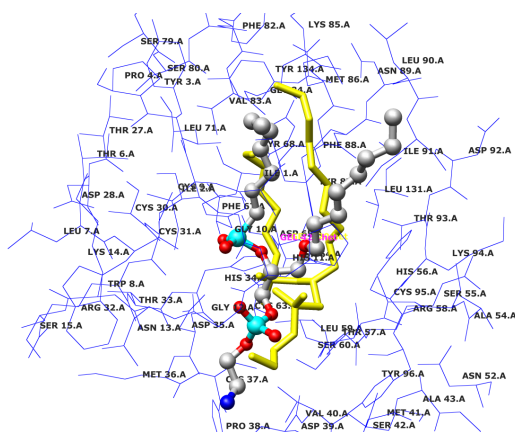
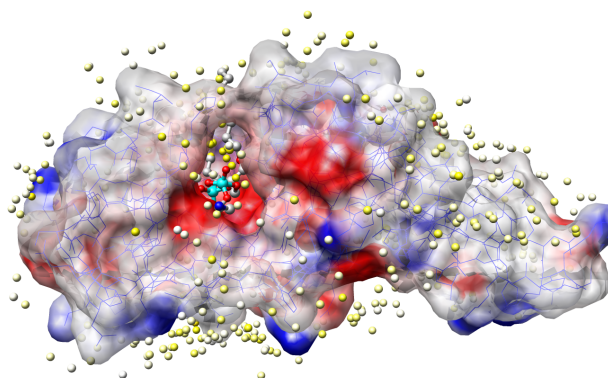
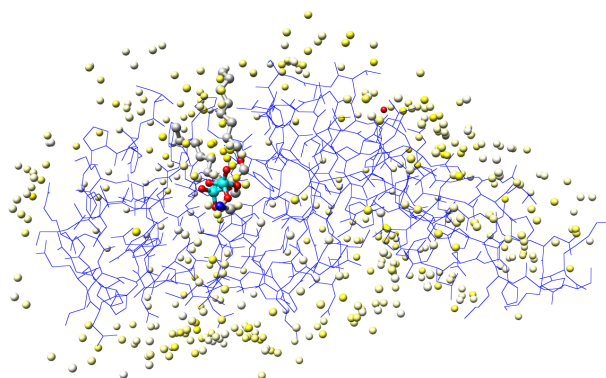
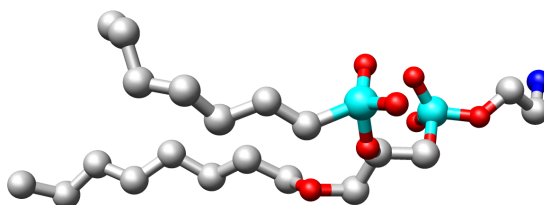


1poc

source: *Apis mellifera*

protein: Phospholipase A2

ligand: GEL transition-state analogue

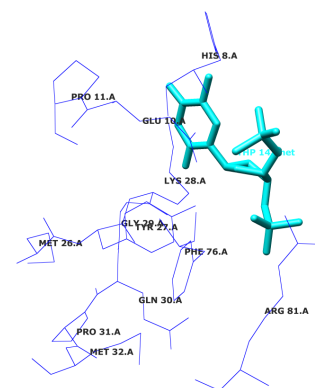
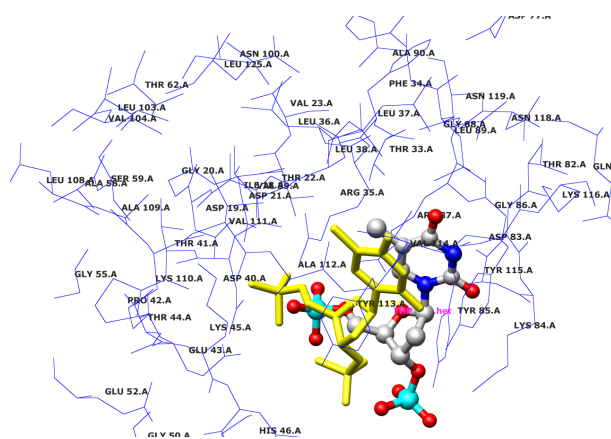
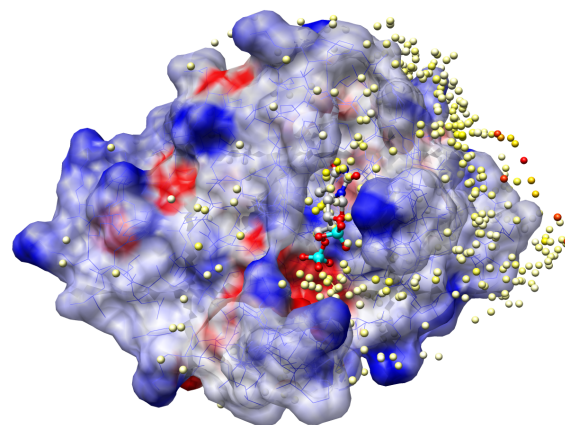
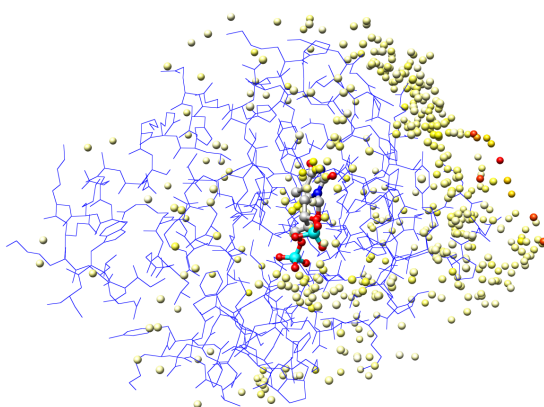
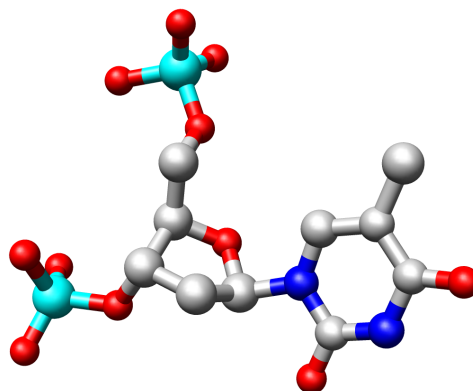


1snc

source: *Staphylococcus aureus*

protein: Thermonuclease precursor

ligand: THP inhibitor

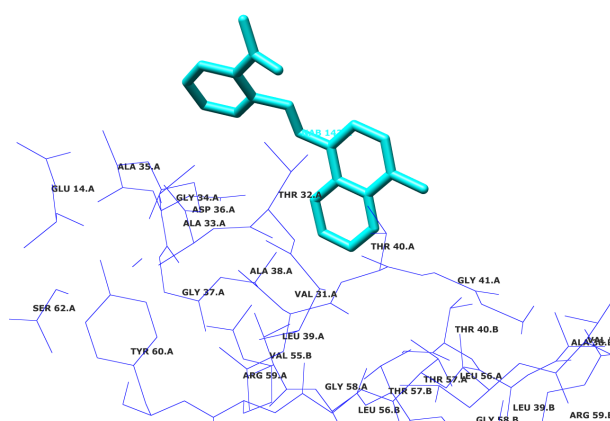
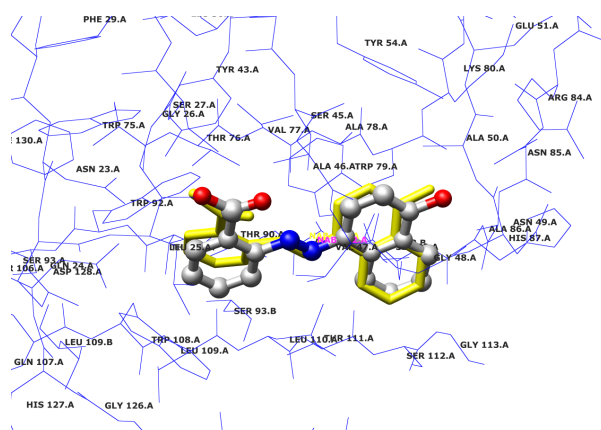
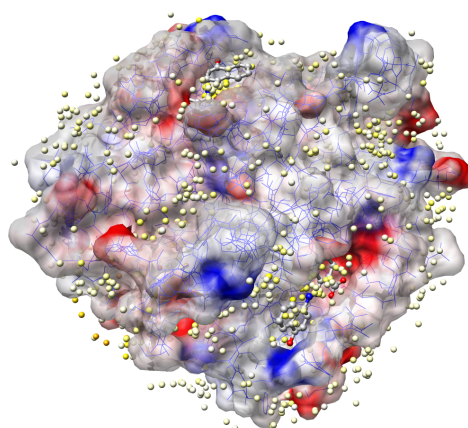
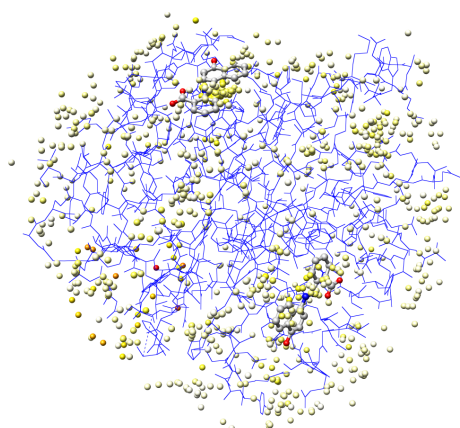
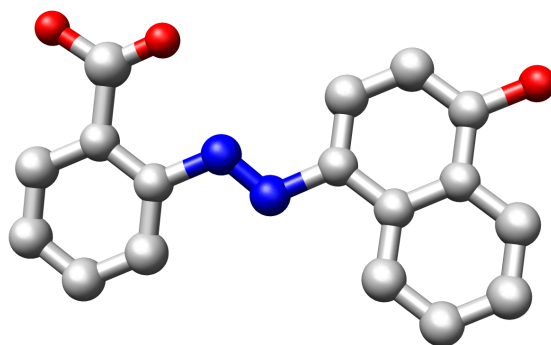


1srj

source: *Streptomyces avidinii*

protein: Streptavidin

ligand: NAB synthetic azobenzene

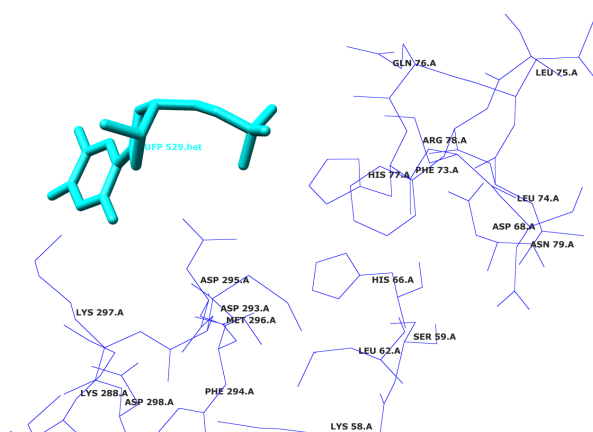
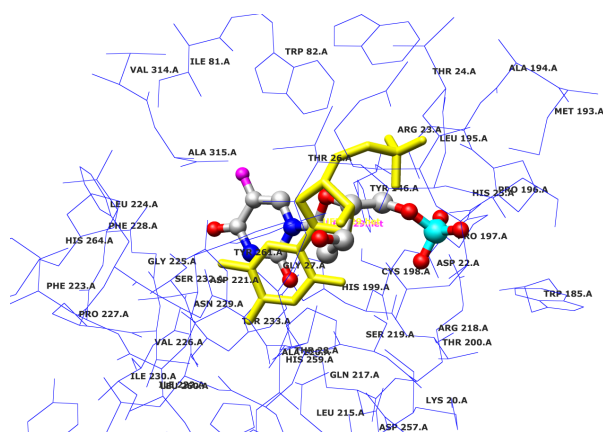
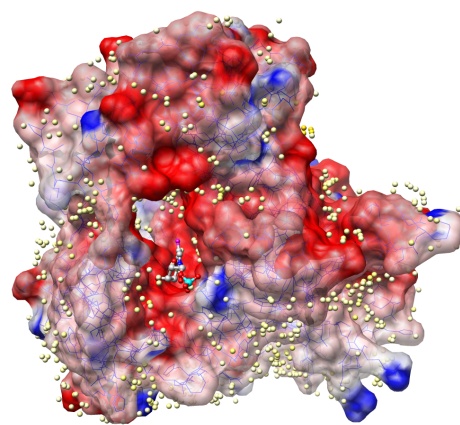
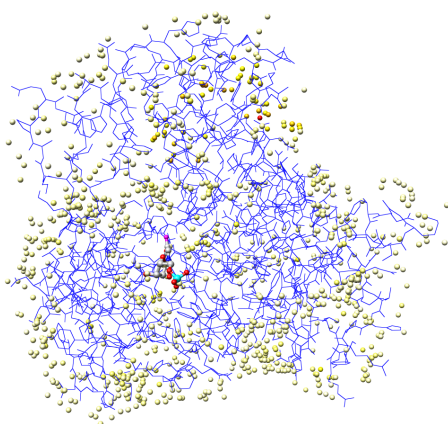
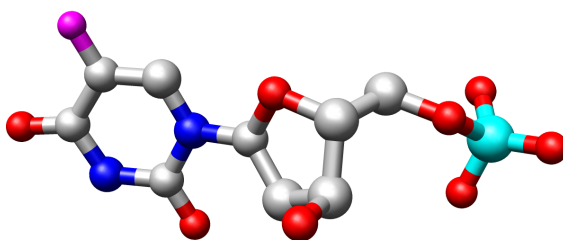


1tdb

source: *Lactobacillus casei*

protein: Thymidylate synthase

ligand: UFP substrate analogue

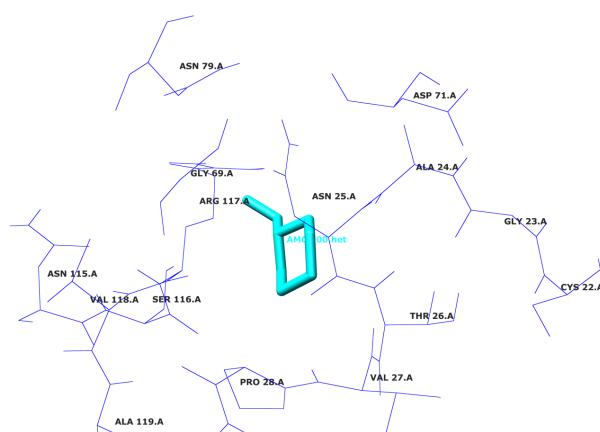
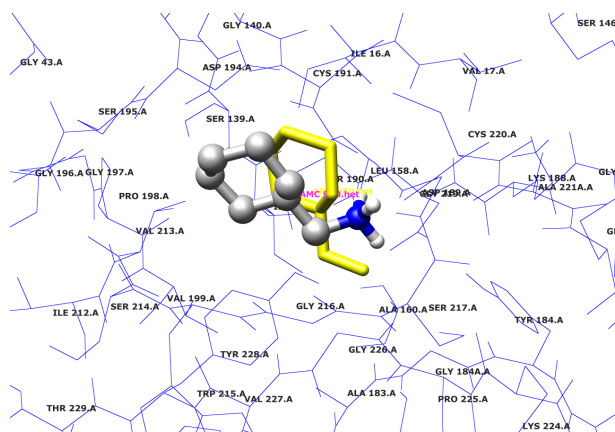
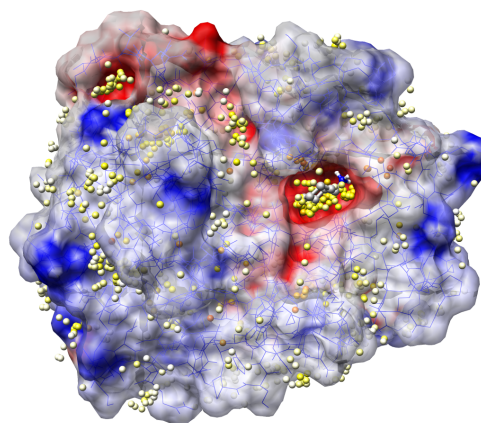
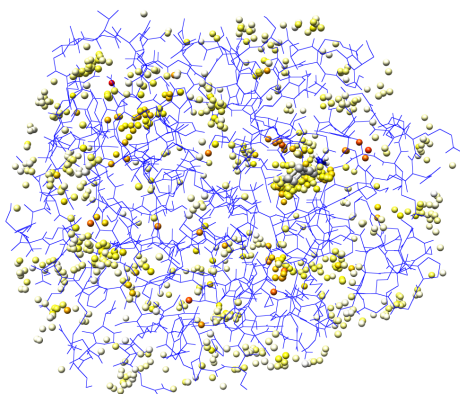
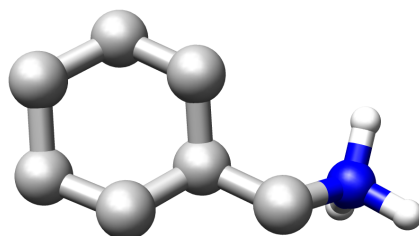


1tng

source: *Bos taurus*

protein: Trypsin

ligand: AMC inhibitor

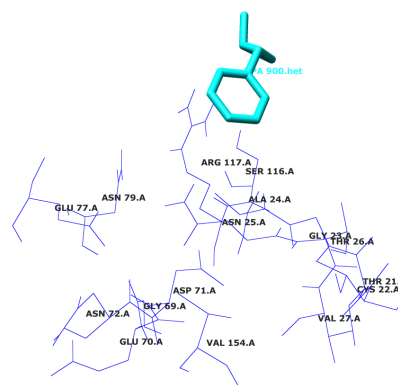
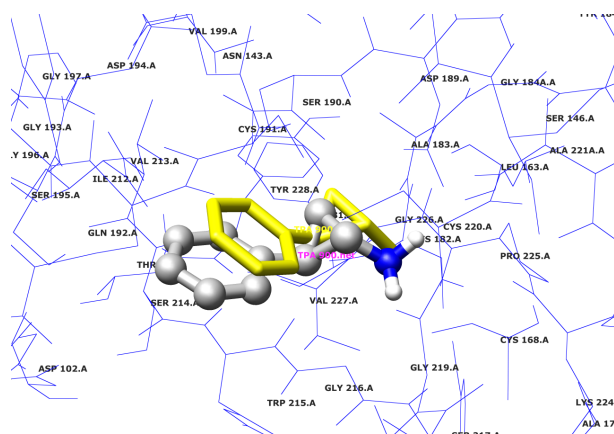
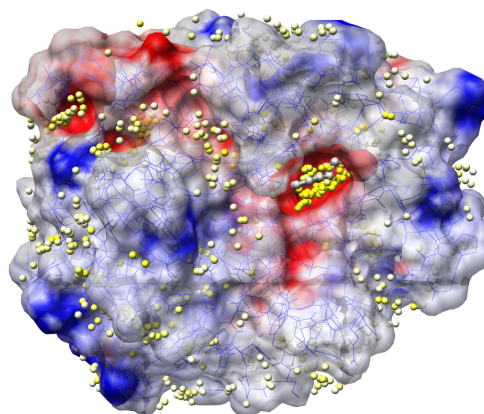
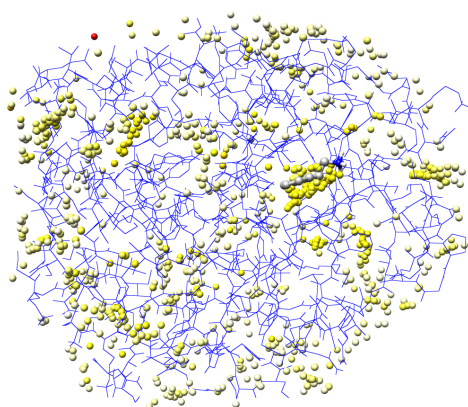
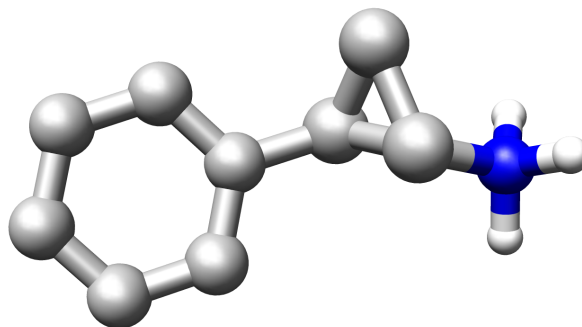


1tnl

source: *Bos taurus*

protein: Trypsin

ligand: TPA inhibitor

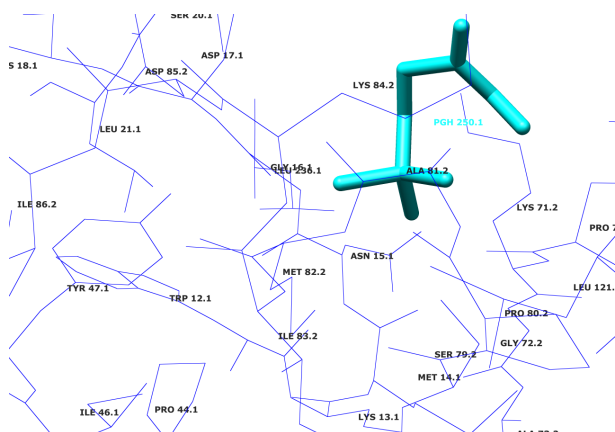
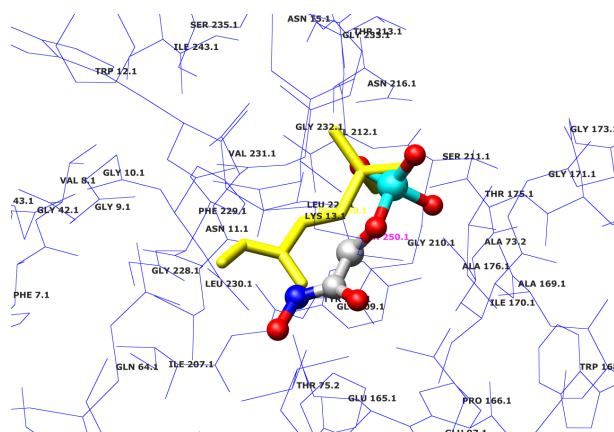
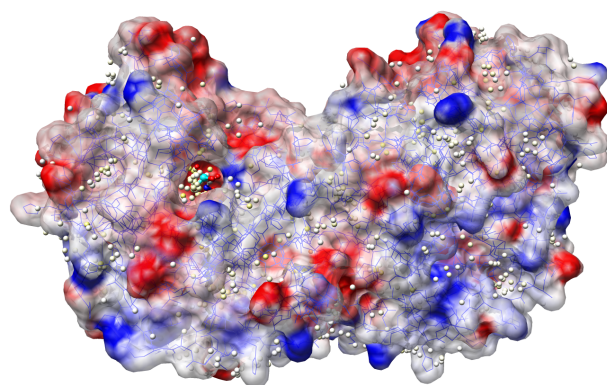
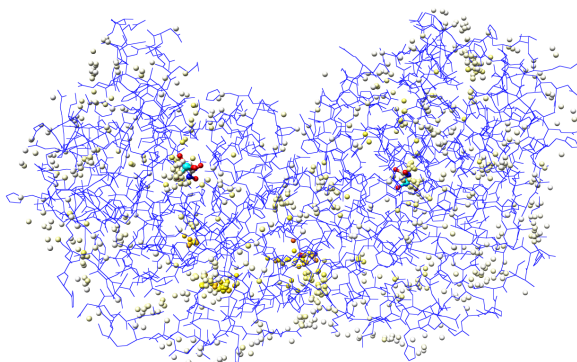
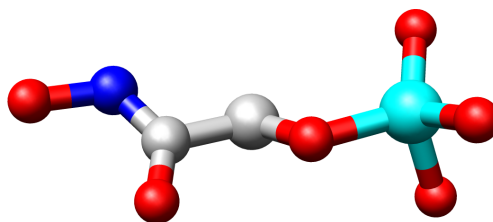


1tph

source: *Gallus gallus*

protein: Triosephosphate isomerase

ligand: PGH inhibitor

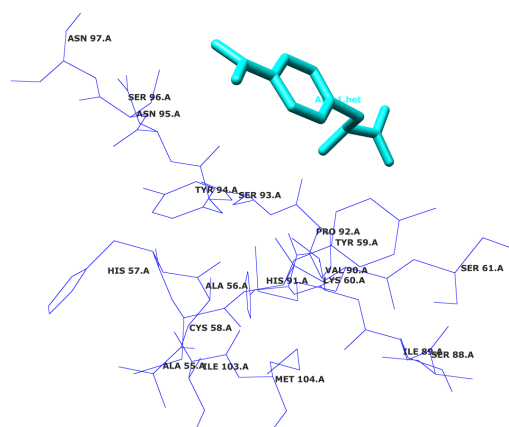
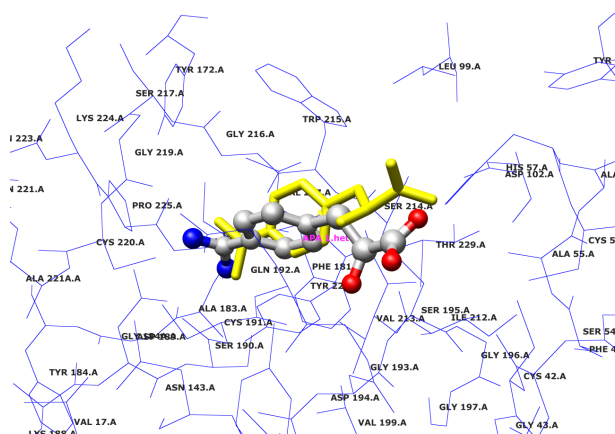
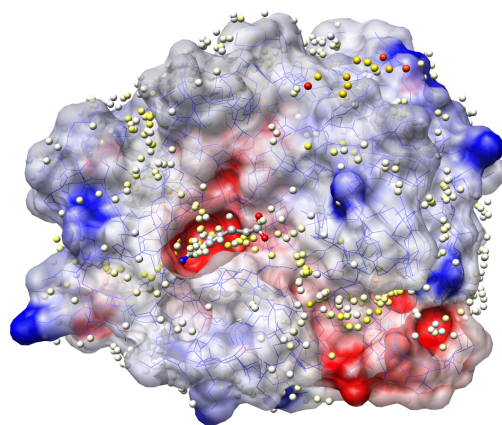
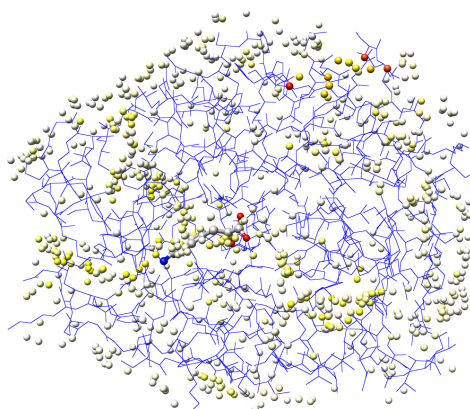
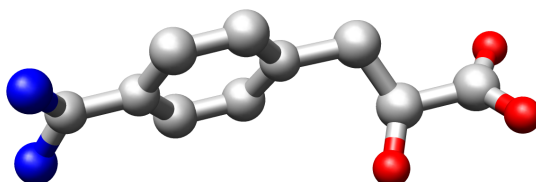


1tpp

source: *Bos taurus*

protein: Trypsin

ligand: APA inhibitor

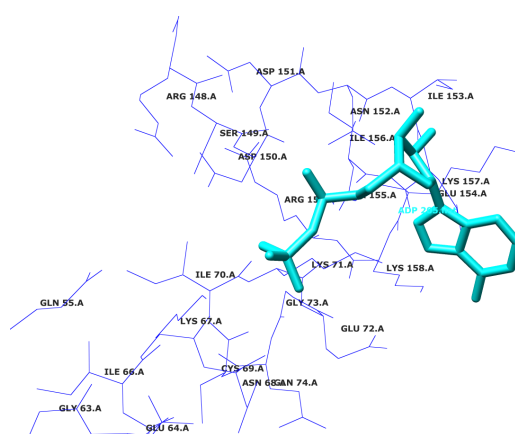
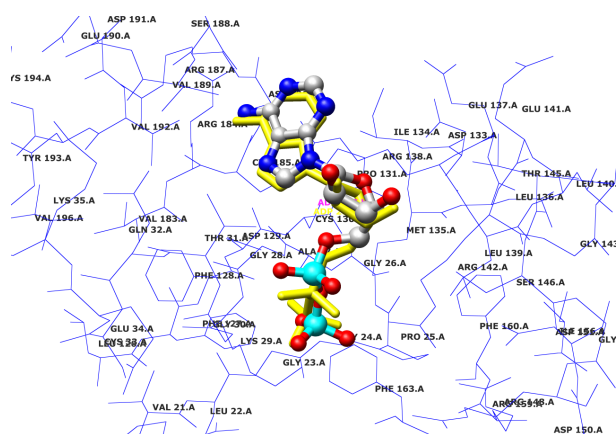
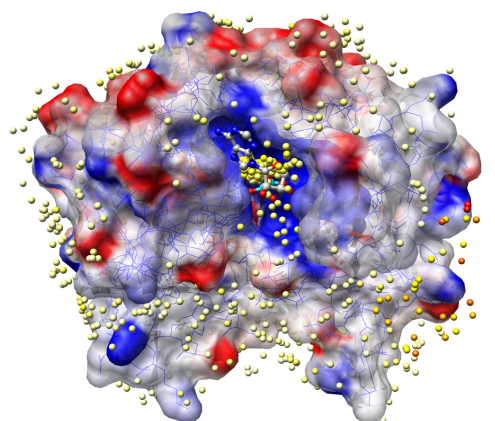
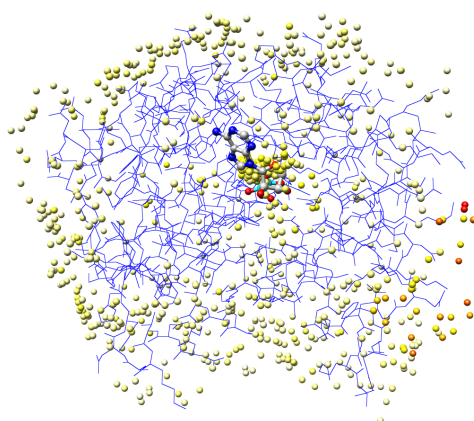
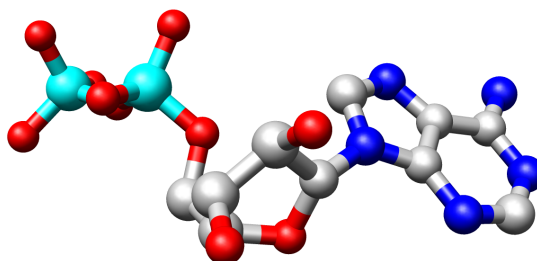


1ukz

source: *Saccharomyces cerevisiae*

protein: Uridylate kinase

ligand: ADP

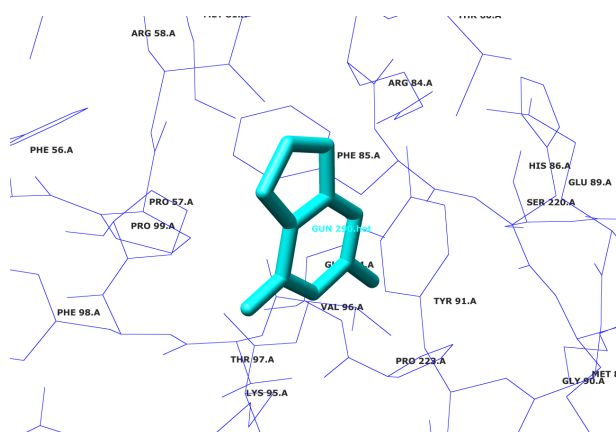
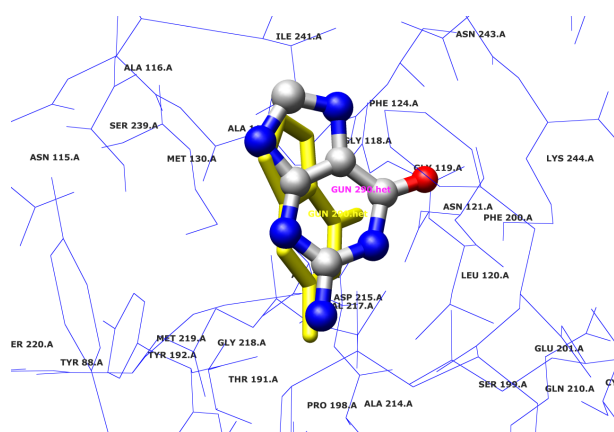
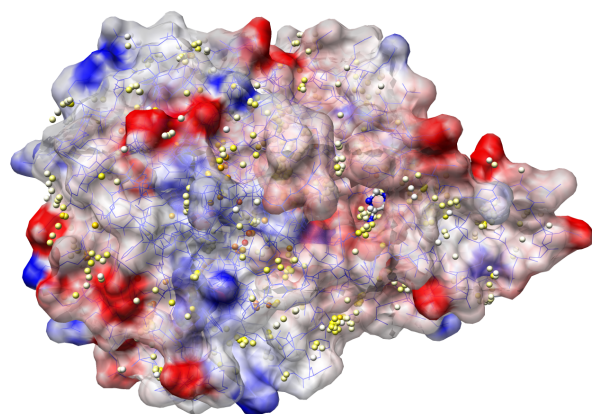
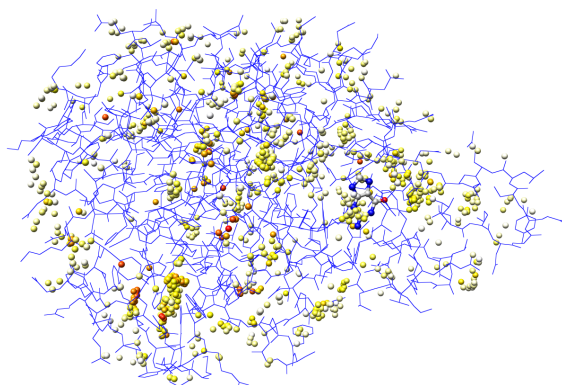
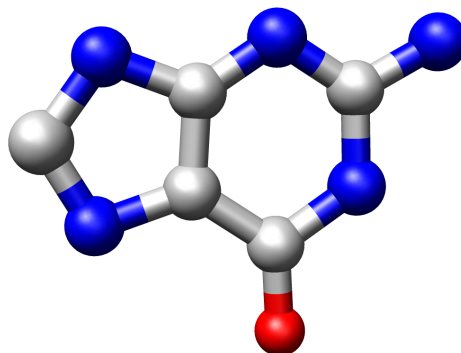


1ulb

source: *Homo sapiens*

protein: Purine nucleoside phosphorylase

ligand: GUN guanine

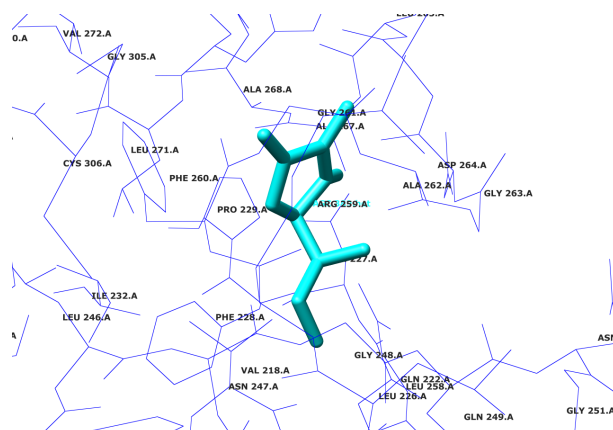
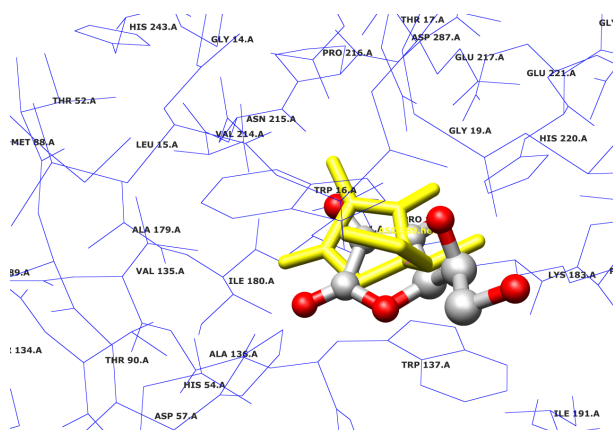
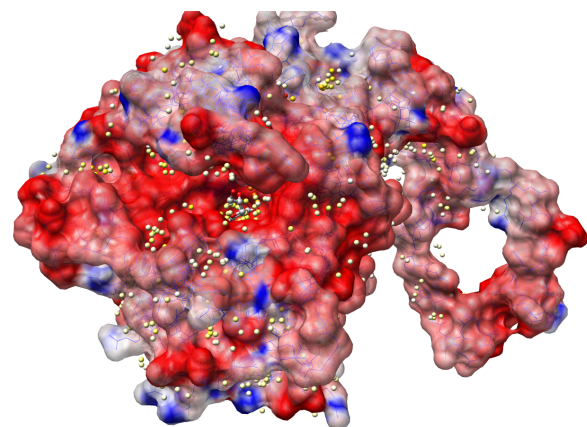
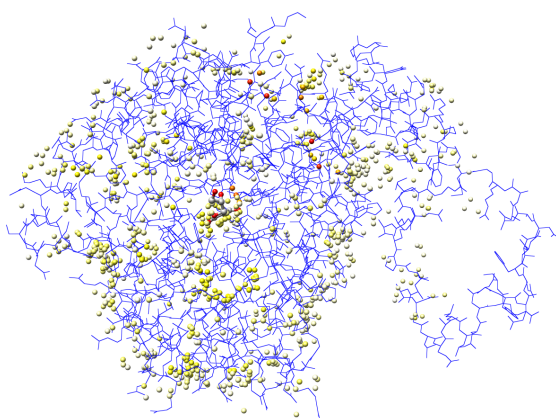
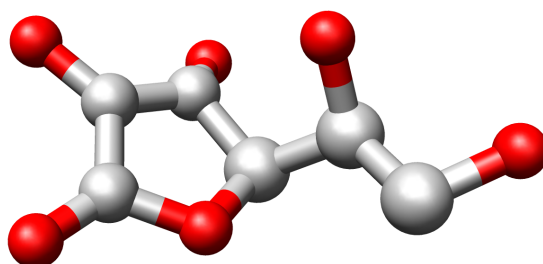


1xid

source: *Streptomyces rubiginosus*

protein: D-xylose isomerase

ligand: ACS product analogue

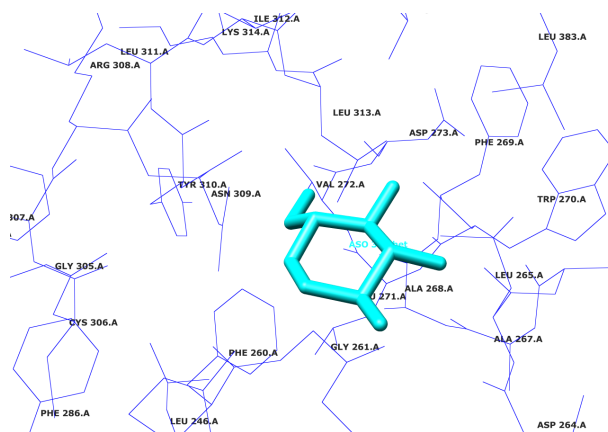
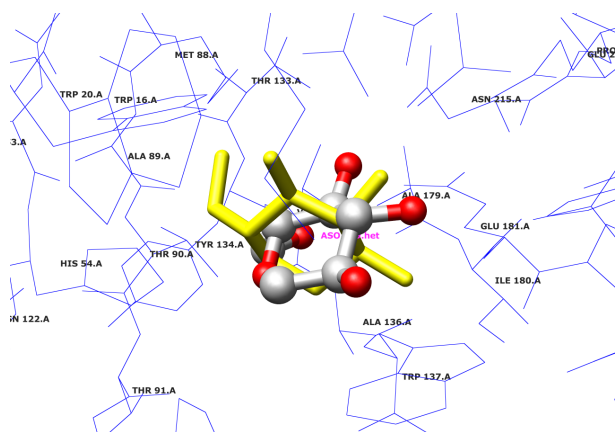
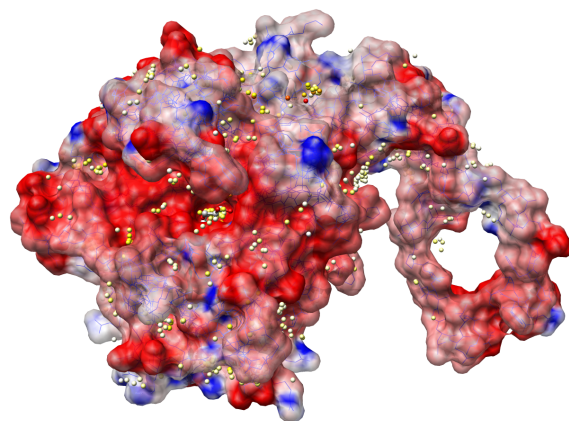
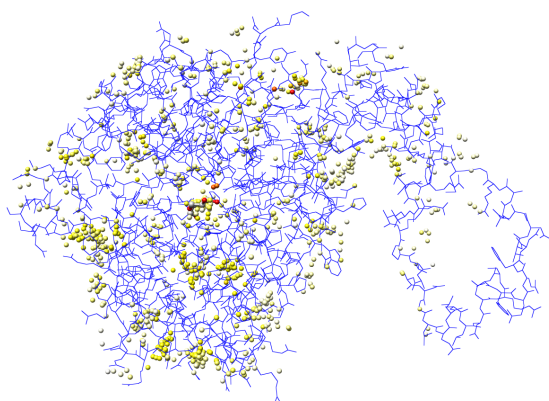
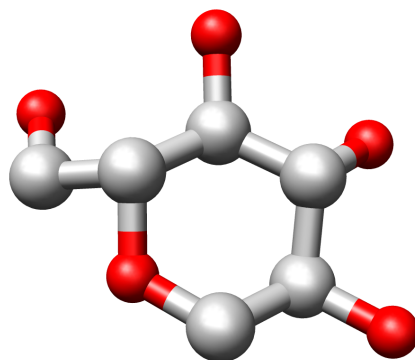


1xie

source: *Streptomyces rubiginosus*

protein: D-xylose isomerase

ligand: ASO substrate analogue

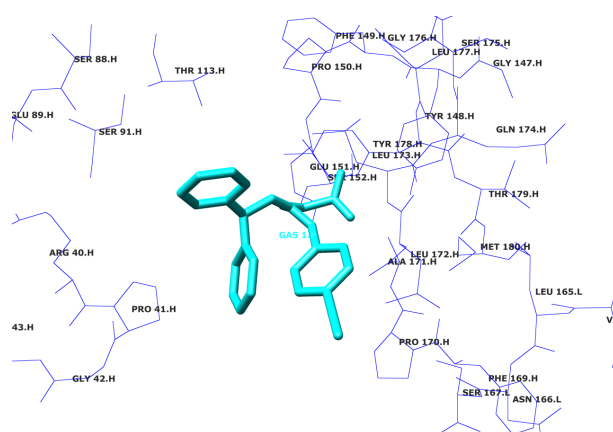
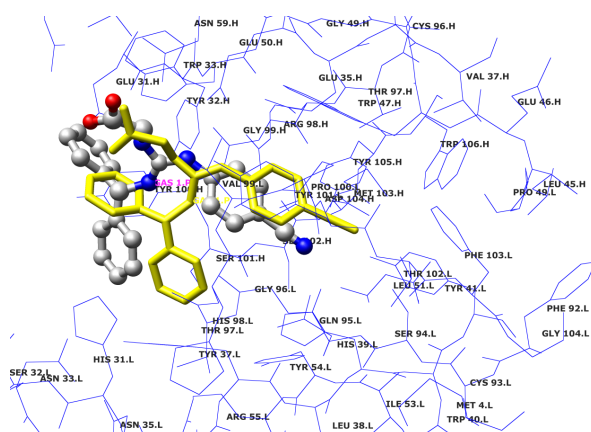
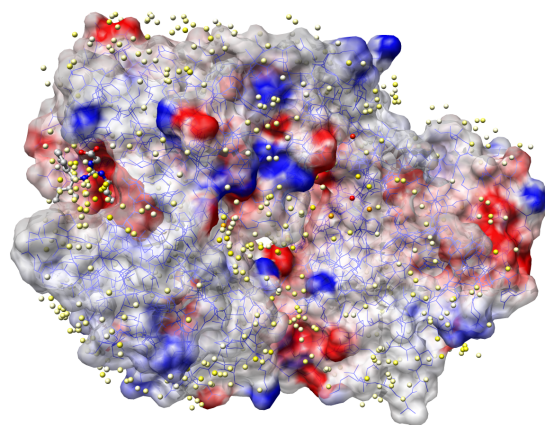
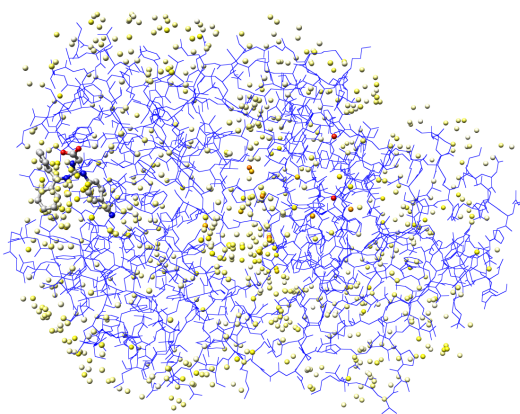
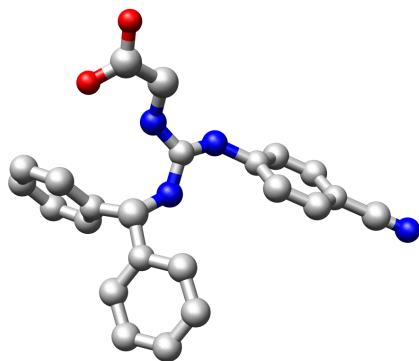


2cgr

source: *Mus musculus*

protein: Immunoglobulin Igg2b-kappa Fab fragment

ligand: GAS antigen

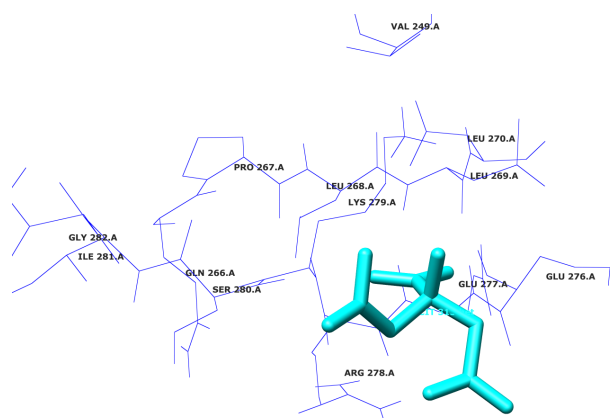
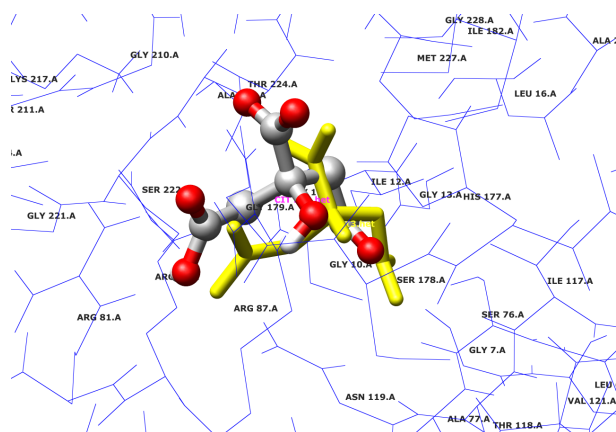
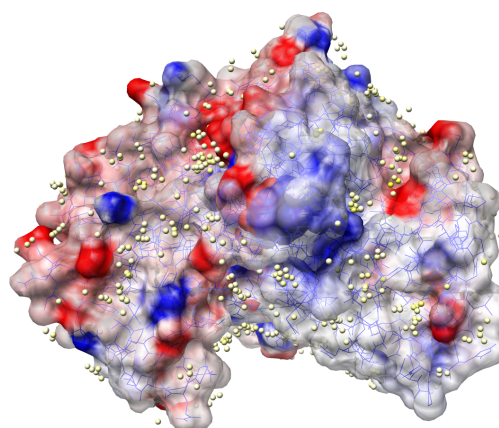
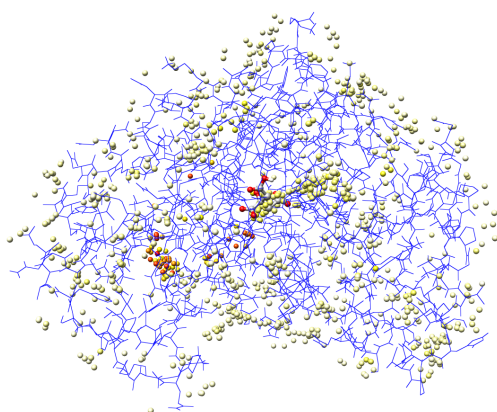
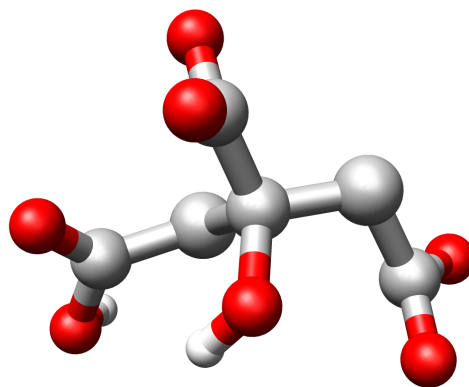


2cmd

source: *Escherichia coli*

protein: Malate dehydrogenase

ligand: CIT substrate analogue

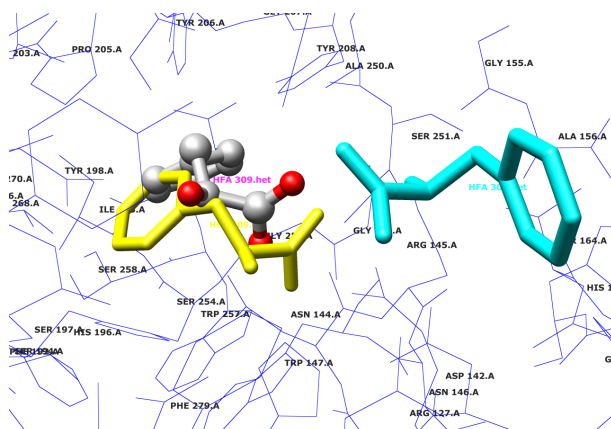
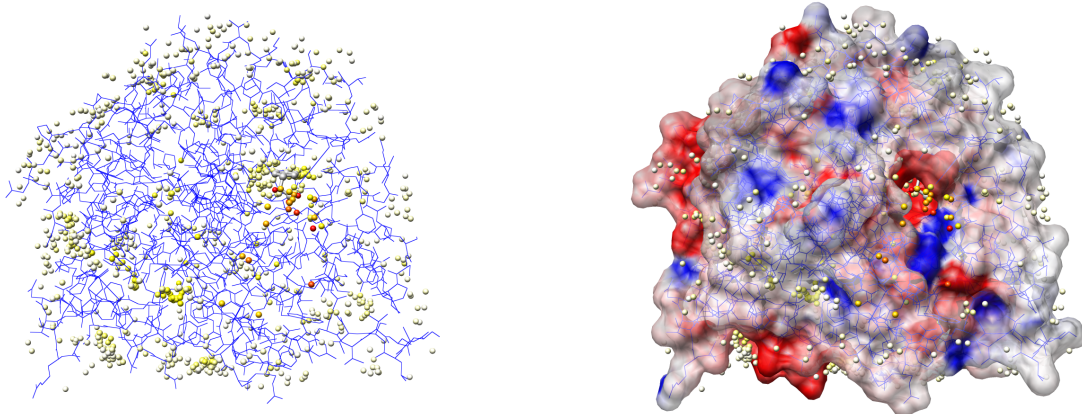
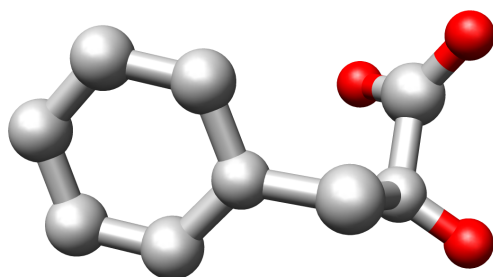


2ctc

source: *Bos taurus*

protein: Carboxypeptidase A

ligand: HFA inhibitor

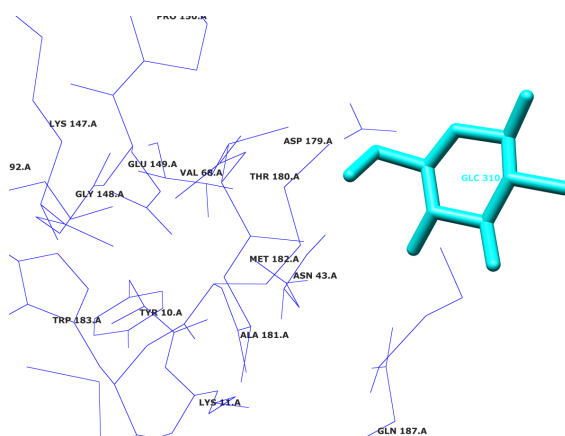
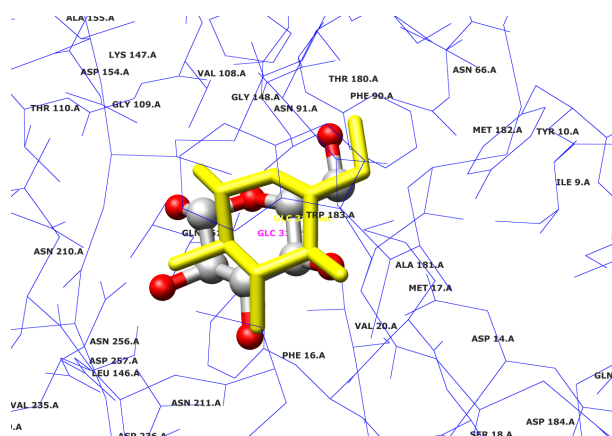
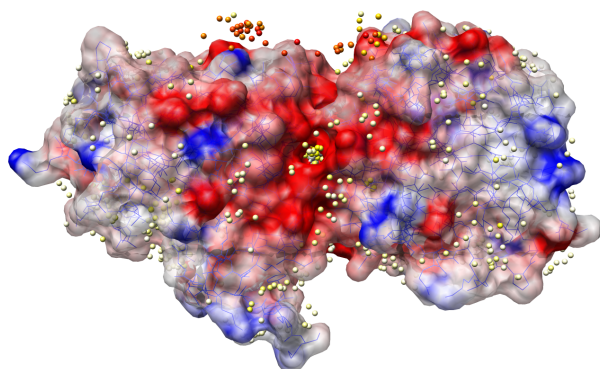
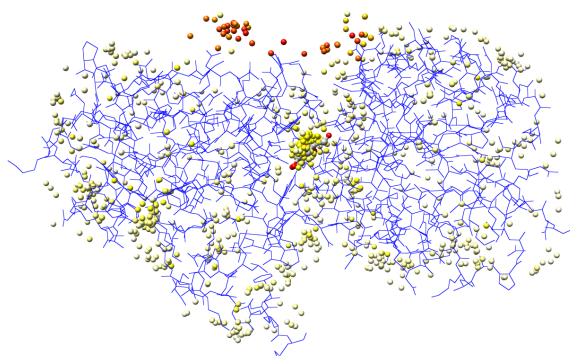
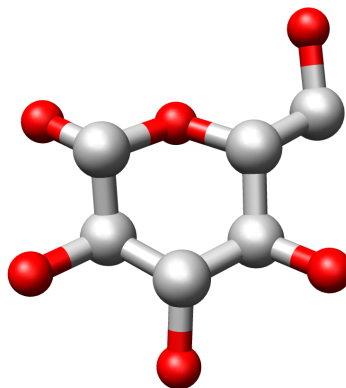


2gbp

source: *Escherichia coli*

protein: D-galactose/d-glucose binding protein

ligand: GLU glucose

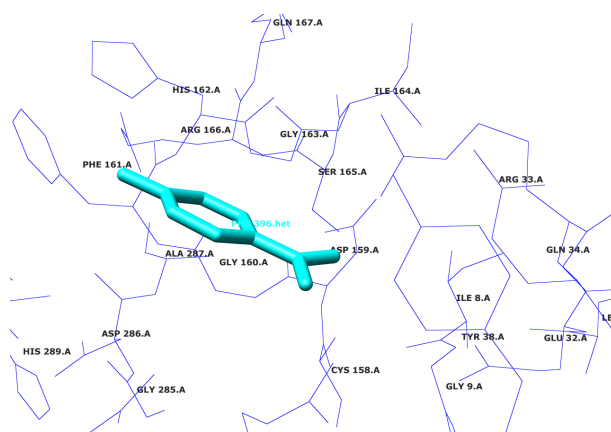
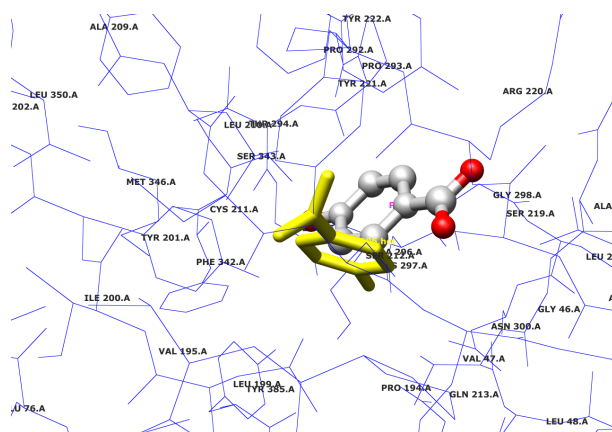
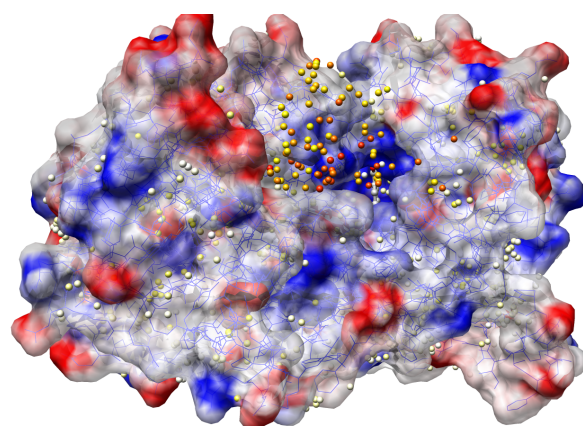
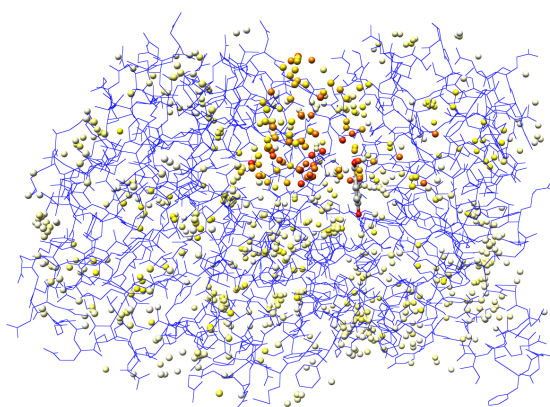
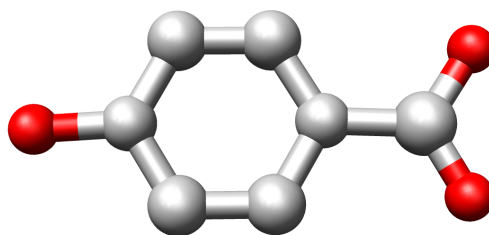


2pjh

source: *Pseudomonas fluorescens*

protein: P-hydroxybenzoate hydroxylase

ligand: PHB substrate

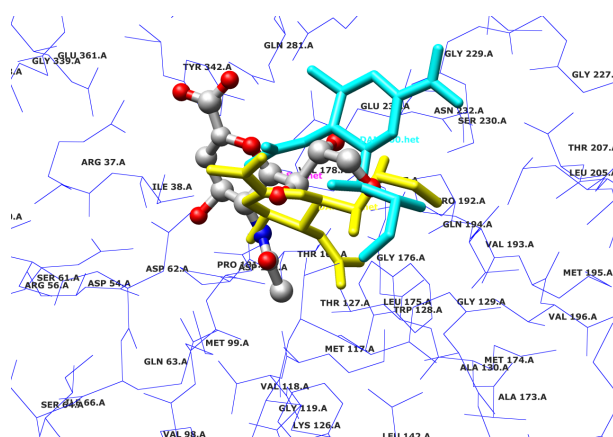
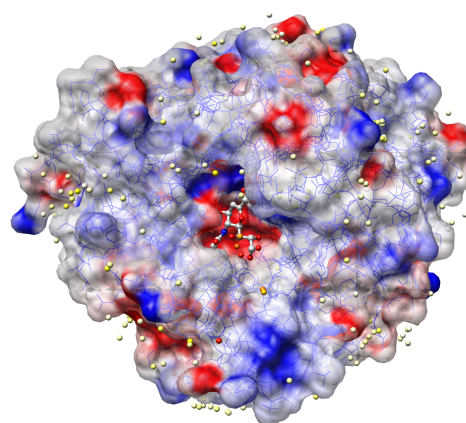
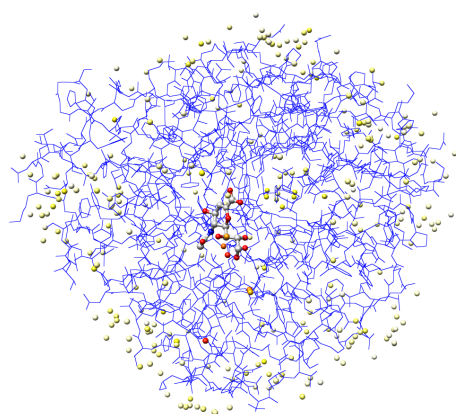
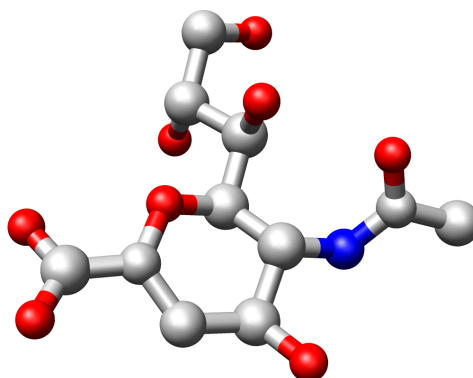


2sim

source: *Salmonella typhimurium*

protein: Sialidase

ligand: DAN transition-state analogue

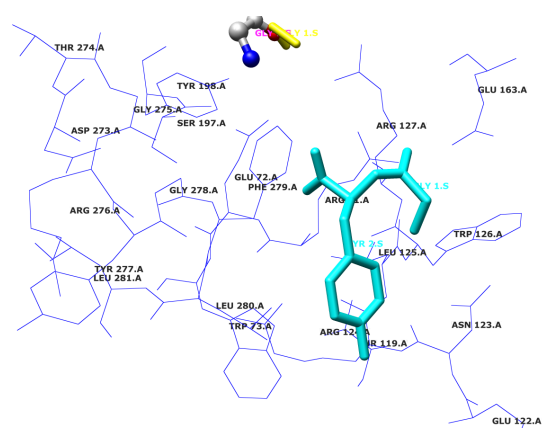
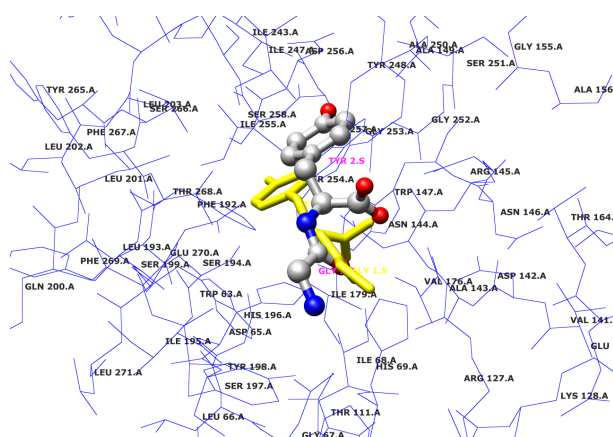
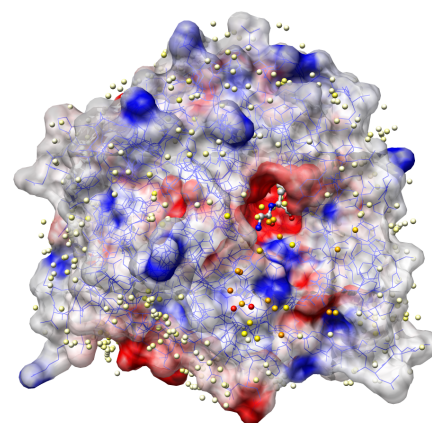
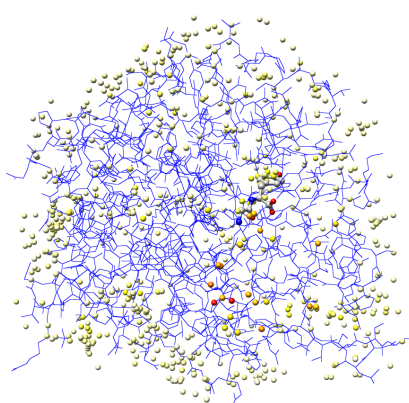
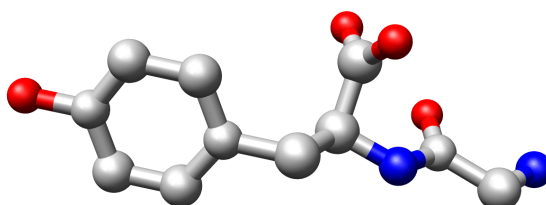


3cpa

source: *Bos taurus*

protein: Carboxypeptidase A

ligand: GLY-TYR substrate

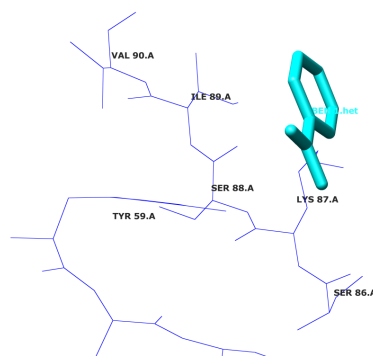
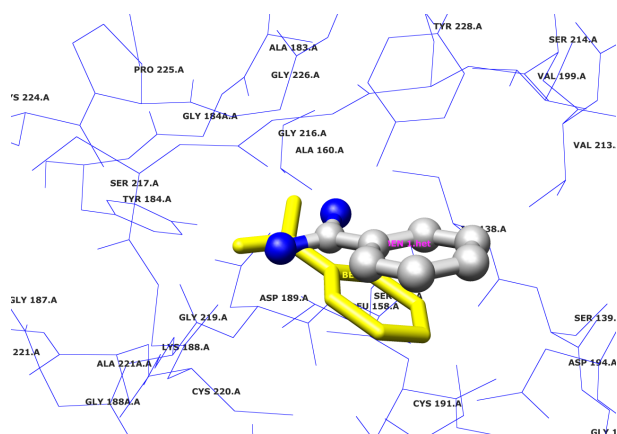
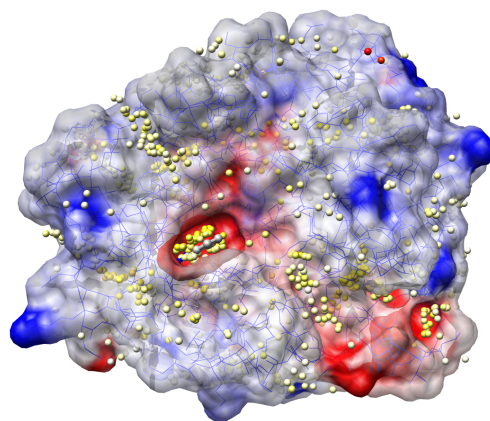
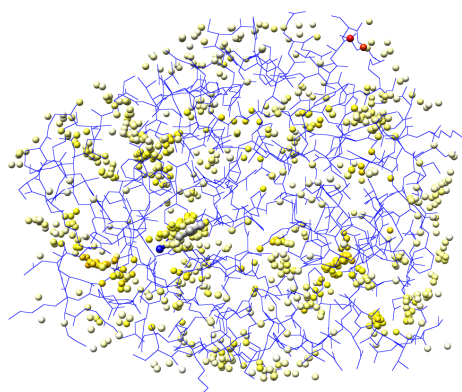
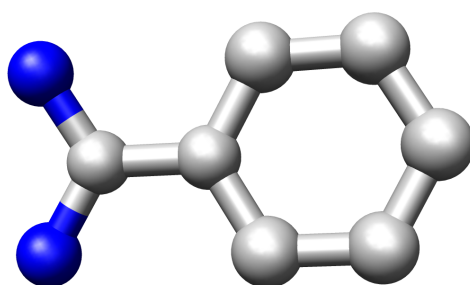


3ptb

source: *Bos taurus*

protein: Trypsin

ligand: BEN inhibitor

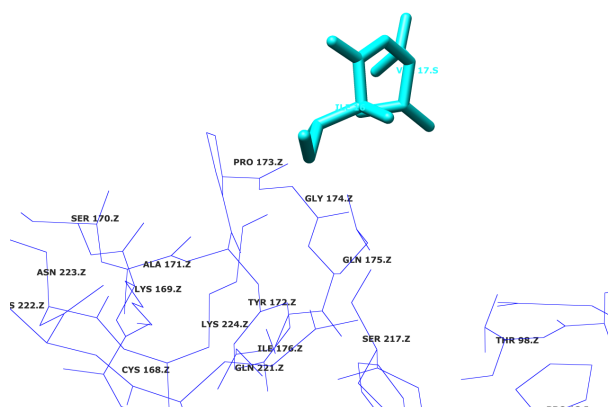
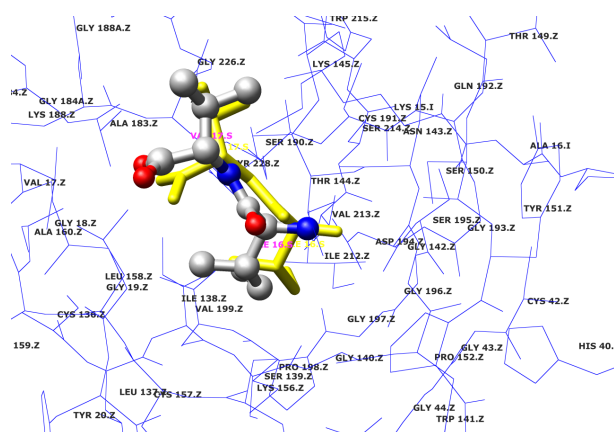
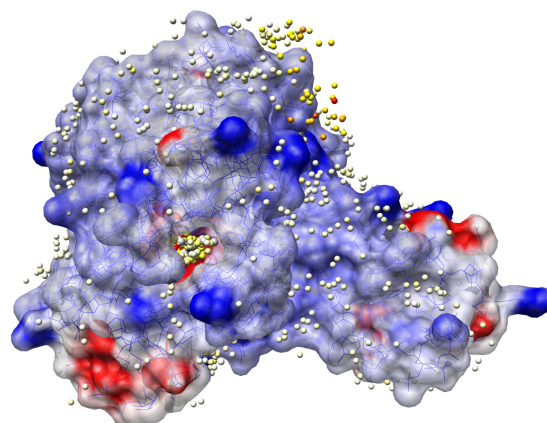
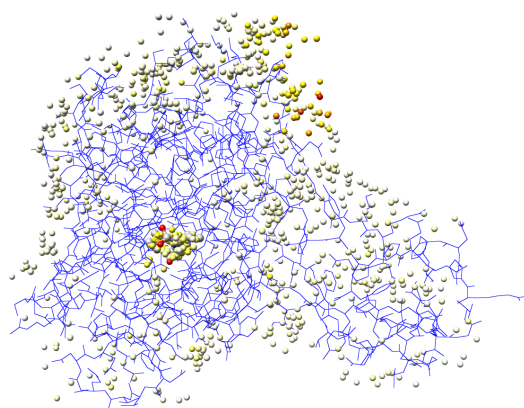
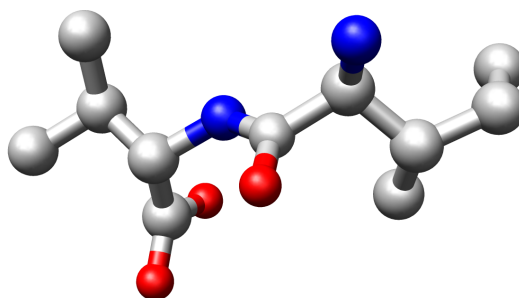


3tpi

source: *Bos taurus*

protein: Tripsinogen

ligand: ILE-VAL dipeptide

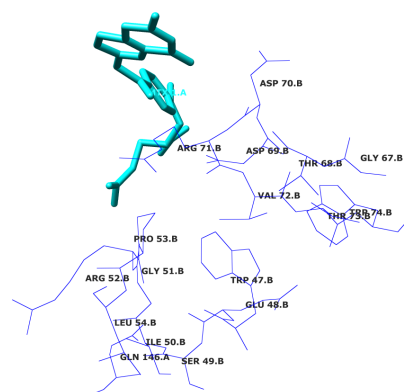
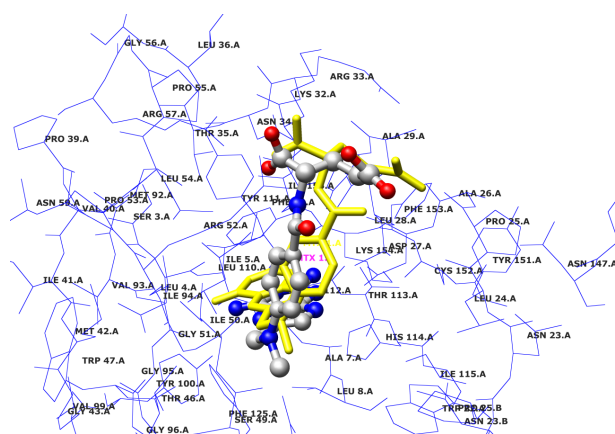
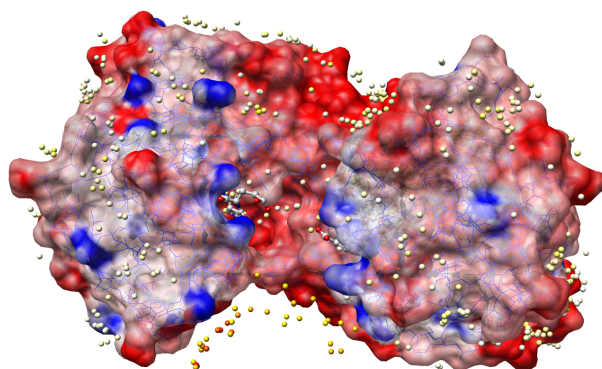
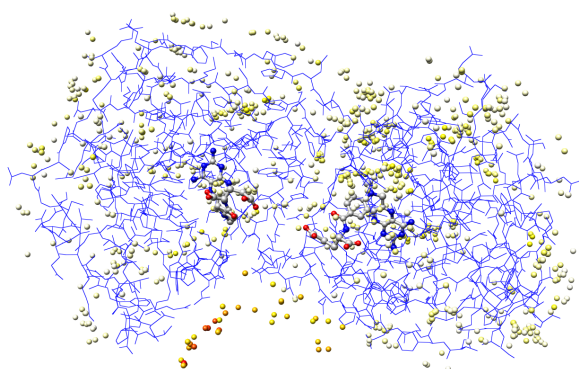
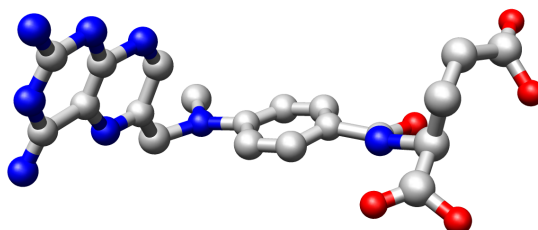


4dfr

source: *Escherichia coli*

protein: Dihydrofolate reductase

ligand: MTX methotrexate



8gch

source: *Bos taurus*

protein: Gamma-chymotrypsin

ligand: GLY-ALA-TRP product

