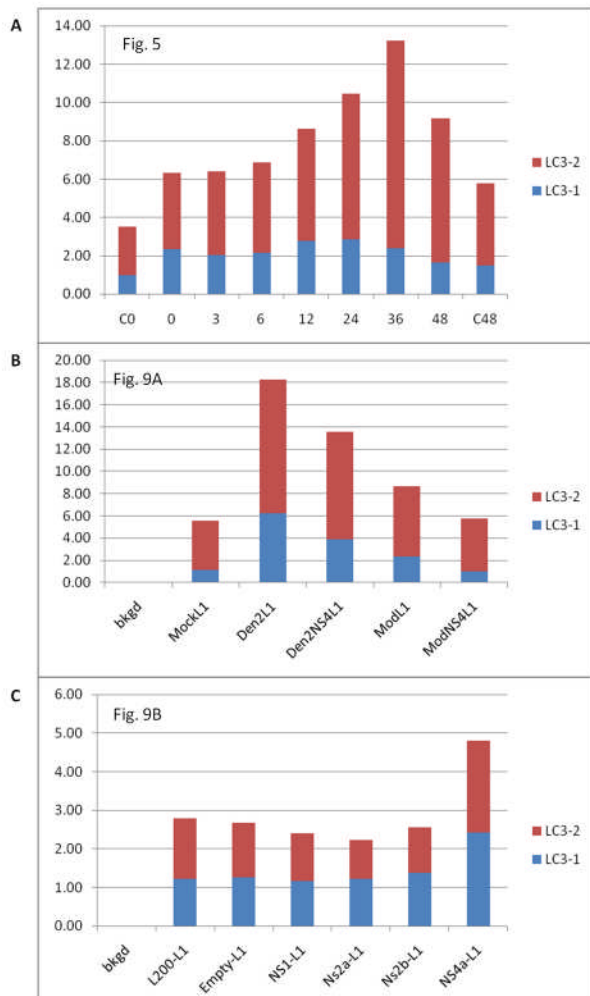


Figure S1. Densitometry calculations for western blot data shown in Figures 5, 9A and 9B. We calculated the intensities of bands using ImageJ, verifying for non-saturation and subtracting background. Values are expressed as the integrals (area * mean density) of each band (normalized to weakest band). **(A)** In Figure 5, total protein measured by western blot doubles or more than doubles within 36 h when cells are infected with Dengue virus. **(B)** In Figure 9A, total protein nearly triples when cells are infected with Dengue virus or Dengue NS4A, and it increases but to a smaller extent when they are infected with Modoc or Modoc NS4A. **(C)** In Figure 9B, NS4A is the only gene transfected that increases LC3-1, cleaved LC3-2, and total LC3. The most parsimonious interpretation of these results is that autophagy is increased following infection and NS4A expression. **(D)** In a single experiment, 10 μ g/ml pepstatin allowed accumulation of Dengue-induced LC3-2, indicating that the dynamics of LC3 generation and clearance must eventually be assessed.

Figure S2. NS4A-HA is expressed in MDCK cells. Transient expression of pCAGGS-NS4A-HA-COOH vector was confirmed by western blot against the HA tag using anti-HA antibody. Mock and control lanes show no positive staining for HA tag, while cells transiently expressing NS4A-HA show robust HA expression at 24 hours post-transfection, confirming expression of NS4A-HA protein. Molecular weights are shown at left.

S1



S2

