

SUPPLEMENTAL DATA

Fig. S1. GPER colocalizes with clathrin. HA-GPER cells prelabeled with rabbit anti-HA antibody (red) at 4°C and incubated at 37°C with or without E2 for various time intervals, fixed, and immunostained for clathrin (green). Colocalization of the receptors with clathrin is shown in the merged images (yellow). Nuclei were detected with DAPI (blue). Results are representatives from two independent experiments.

Fig. S2. GPER enters the early endosome. HA-GPER or HA-CXCR4 or HA-β1AR cells were prelabeled with rabbit anti-HA antibody at 4 °C and incubated at 37°C with respective ligands for various time intervals. Fixed and permeabilized cells were immunostained for EEA-1. HA and EEA1 were detected with anti-rabbit Alexa 594 (red) and anti-mouse Alexa 488 (green), respectively. Colocalization of receptor with EEA1 is demonstrated in the merged images (yellow). Nuclei were detected by DAPI (blue). Results are representatives from three independent experiments.

Fig. S1.

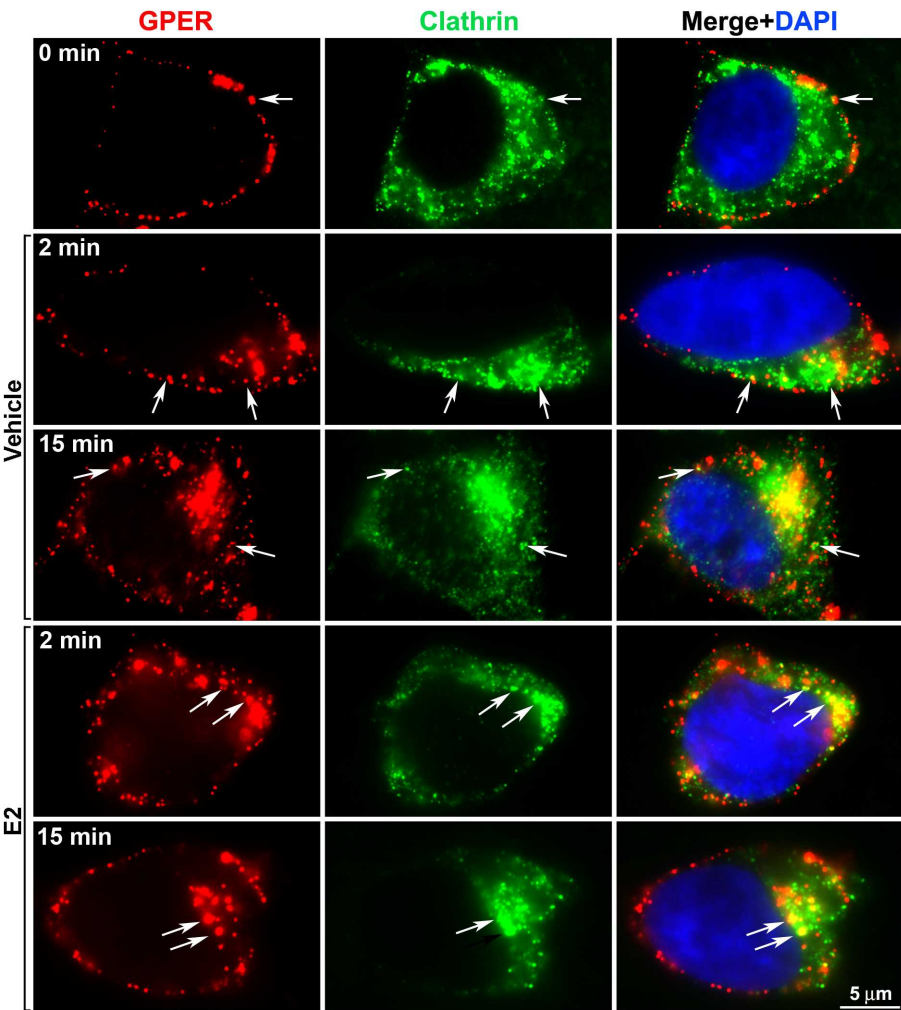


Fig. S2

