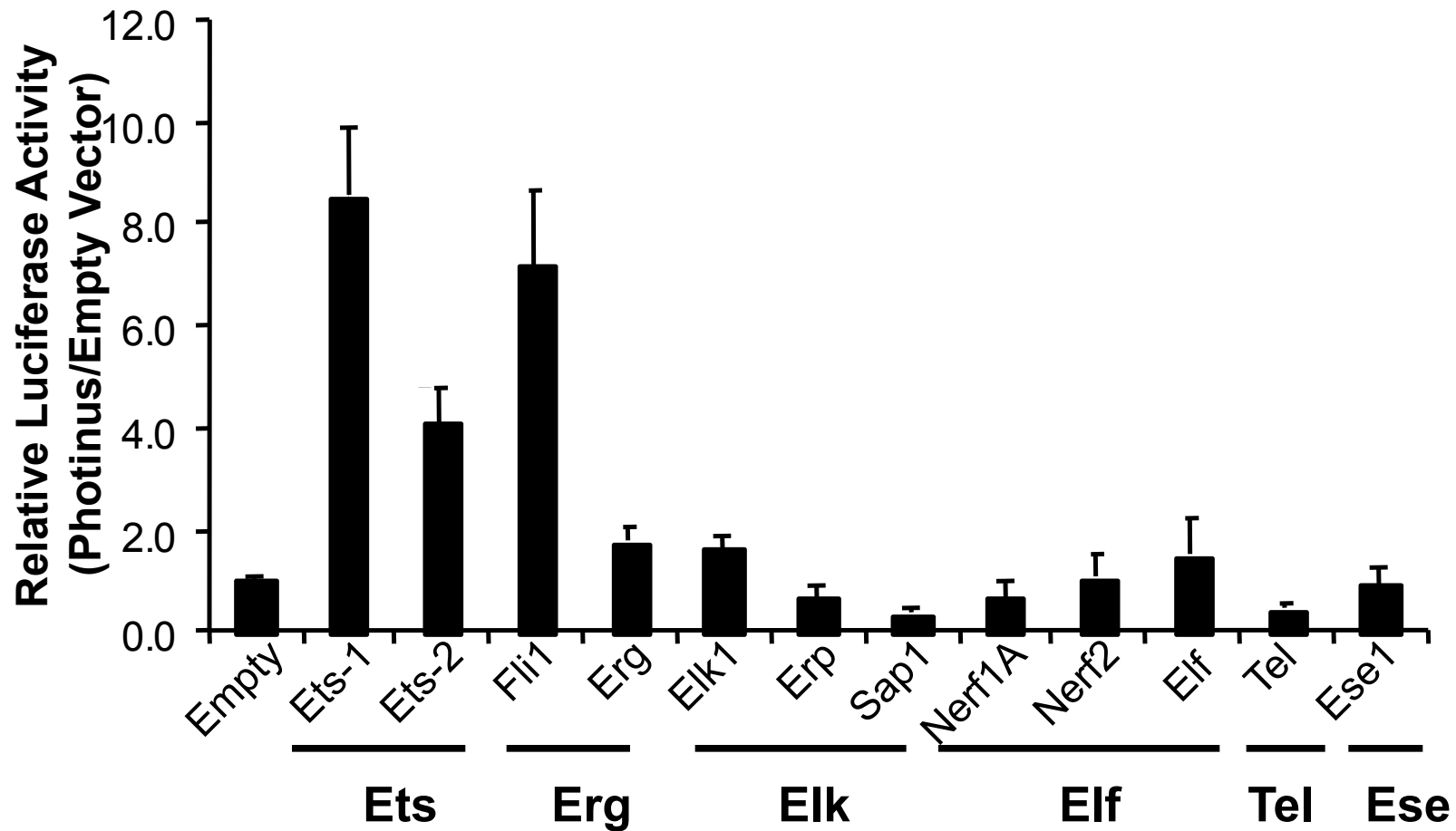
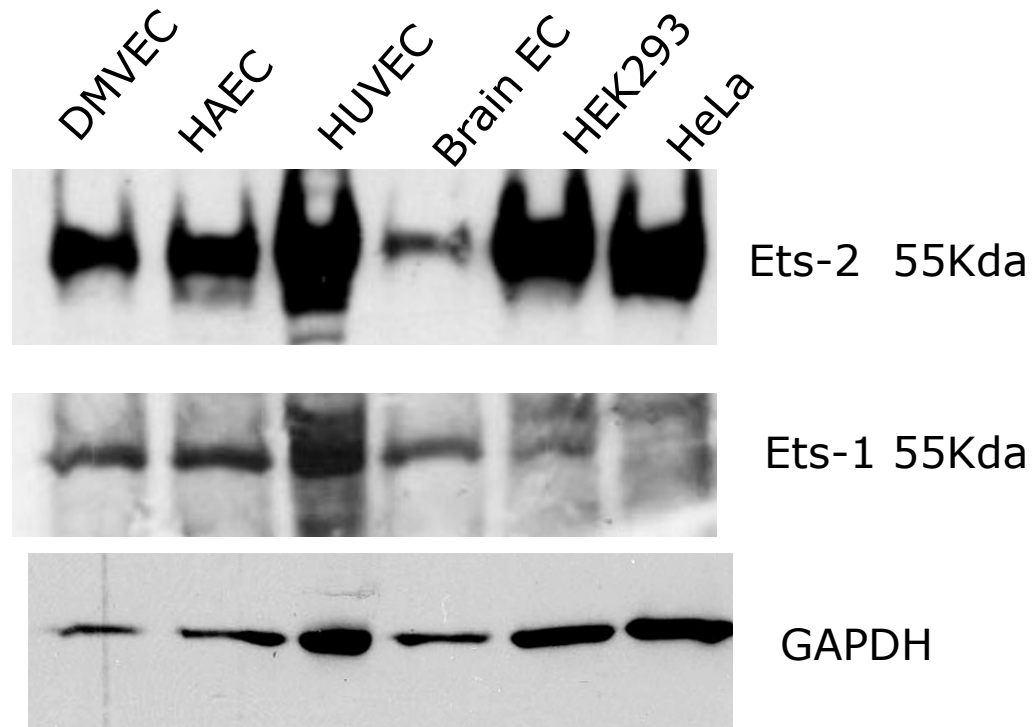


	EBS1	EBS2	
-99	CACACAG GGA GTCCGGCTG GGA AGGGCCCATCC		-67
-99	CACACCAG <u>GAG</u> TTCCGGCTG GGA AGGGCCCATCC		-67
	mEBS1		
-99	CACACAG GGA GTCCGGCTG <u>GAG</u> AGGGCCCATCC		-67
	mEBS2		

Supplemental Figure S I. Construction of luciferase reporter vectors containing genomic region upstream of the miR-126/*Egfl7* gene. Mutations were made to two of the ETS binding sites, EBS1 extending from -93 to -97, and EBS2 extending from -80 to -84, in the *Egfl7* proximal promoter constructs and transfected into HUVEC with RL-TK control vector.



Supplemental Figure S II. Ets-1 and Ets-2 regulate the expression of miR-126. (A) Ets-1, Ets-2, and Fli1 over-expression increase transactivation of the full length EGFL7 proximal promoter in HEK293 cells. The -1670 *Egfl7* proximal promoter constructs and PCI-Ets factor expression constructs were co-transfected into HEK 293.



Supplemental Figure S III. Ets-1 and Ets-2 expression profile in different types of cells. Total protein was harvested and analyzed by immunoblotting for Ets-1 or Ets-2.