

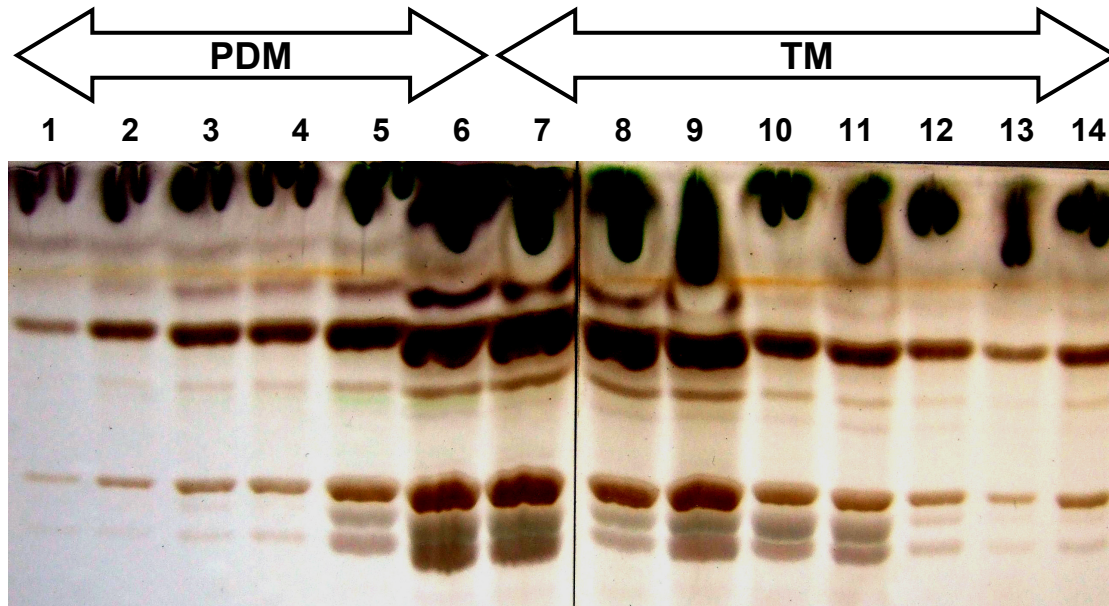
SUPPLEMENTAL DATA

Supp. Fig. 1. Lipid analysis of PDM and TM fractions.

Synechocystis 6803 PDMs and TMs were obtained by two rounds of sucrose density-gradient centrifugation (5). Lipids were extracted from the different fractions, equal volumes separated via thin layer chromatography and visualized by incineration.

Supp. Fig. 2. Membrane localization of different PSII assembly factors in *pitt*⁻ and *psbB*⁻.

Synechocystis 6803 cell extracts of *pitt*⁻ (**A**) and *psbB*⁻ (**B**) mutant strains were separated by two consecutive rounds of sucrose density-gradient centrifugation and analyzed as described in the legend to Fig. 2.



Supp. Fig. 1

