

Figure S1. (A) Pre-activated cells were stained with anti-CD4, anti-CD8 and anti-mouse-FOXP3 antibodies. Open histograms represent isotype controls; solid histograms represent FOXP3 specific staining. (B) Immunophenotyping of cultured nTreg cells showing absence of CD8+ cells.

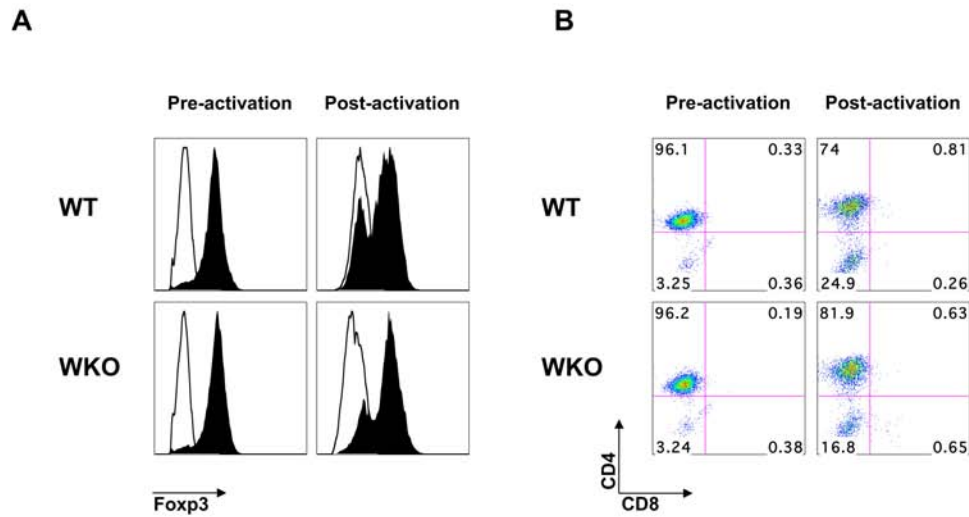


Figure S2. Pre-activated WKO and WT nTreg cells were stained with specific antibodies for activation markers and nTreg-associated molecules. Open histograms represent isotype controls (dotted lines) and specific staining before activation (black lines); solid histograms represent specific staining after activation. Representative data from at least three independent experiments are shown.

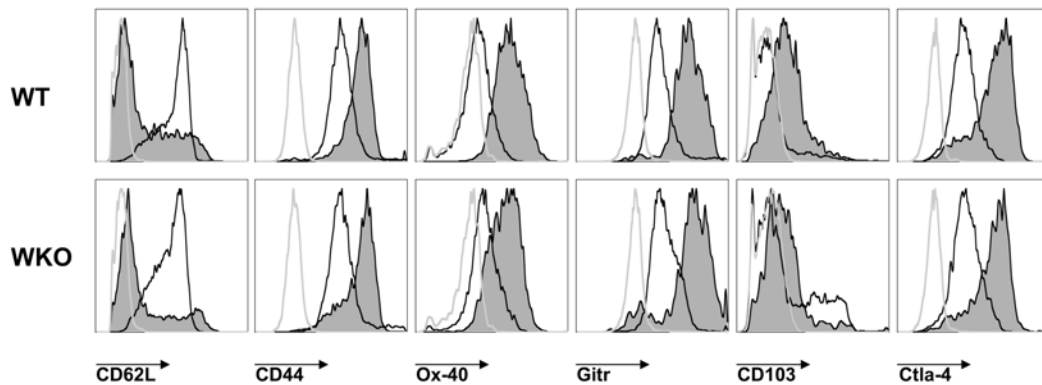


Figure S3. Representative flow-cytometry plots showing the percentage of apoptotic LPS-activated B220+ B-cells after 8 h coculture with activated nTreg and CD8+ T-cells from WKO or WT mice at a ratio of 1:5

