

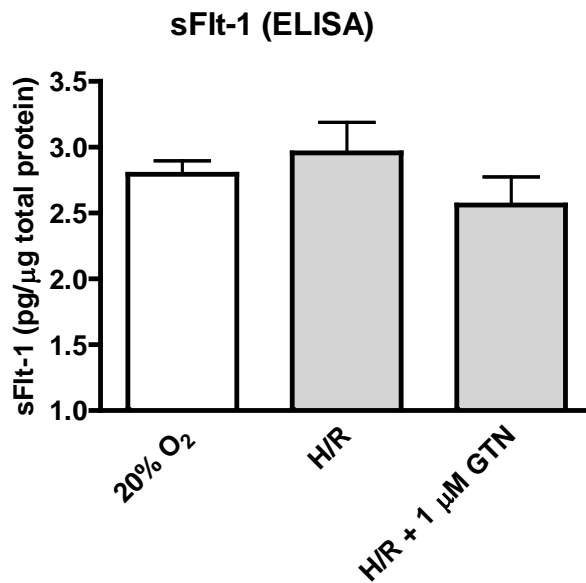
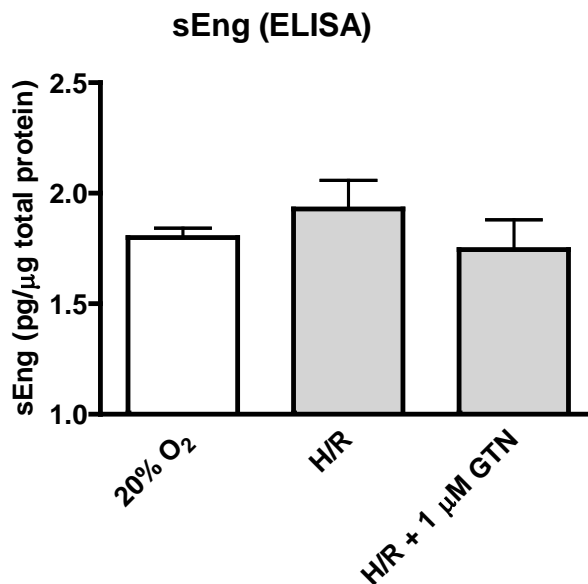
A**B**

Fig. 3S. Effect of GTN on the secretion of sFlt-1 and sEng by chorionic villi explants exposed to hypoxia/re-oxygenation (H/R). (A) & (B) Relative sFlt-1 and sEng levels (respectively) in the media of explant cultures (6 explants per placenta with a minimum of three placentas per treatment). Values in pg/ml were divided by the total amount of protein ($\mu\text{g/ml}$) in the media. No significant differences in the levels of sFlt-1 and sEng in the media were observed.