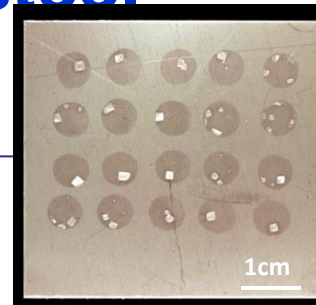


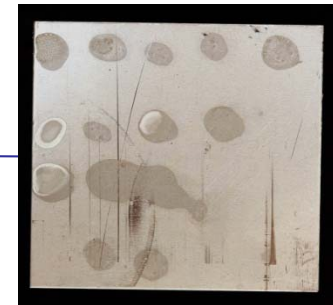
Supplementary Fig 1. Optimization of several steps involved to remove microbes from stainless steel

Deposition
Manual vs. Automatic

Manual deposition was found to be satisfactory compared to automated deposition.



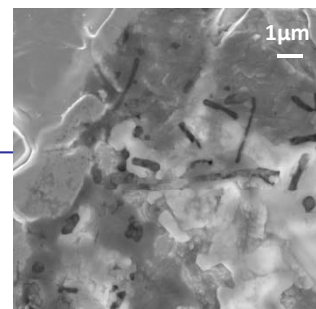
Manual



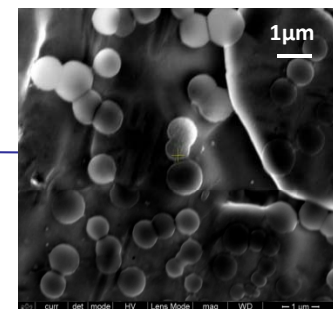
Automatic

Suspension fluid
PBS vs. Water

Model microbial communities prepared in water produced a uniform layer on metal surface. PBS buffer yielded salt crystals after drying, which poses problems for the recovery of microbes.



PBS

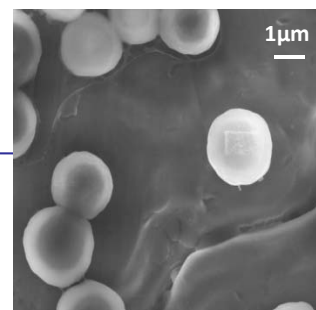


Water

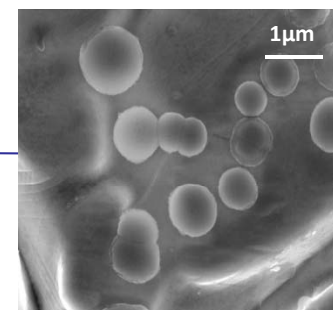
Before sampling

Sampling materials
Cotton vs. Nylon-flocked

Both flocked nylon and cotton swabs left behind detectable numbers of microbes on metal surfaces after sampling.



Cotton



Nylon-flocked

After sampling