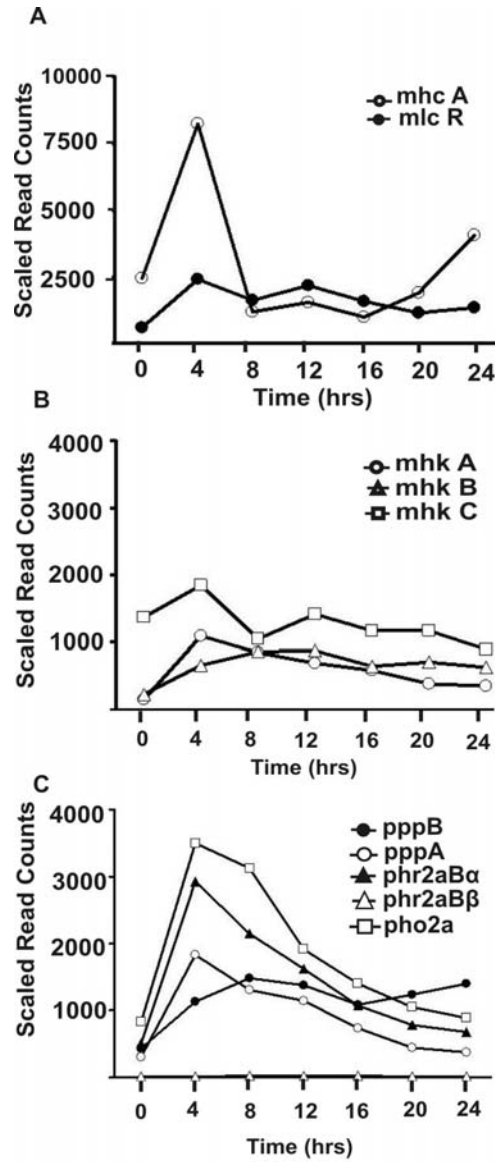
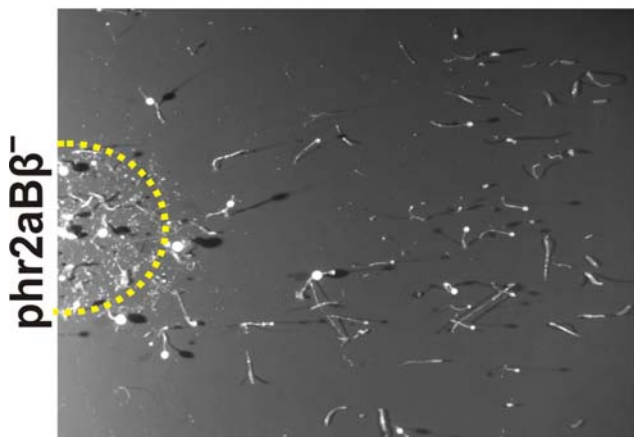
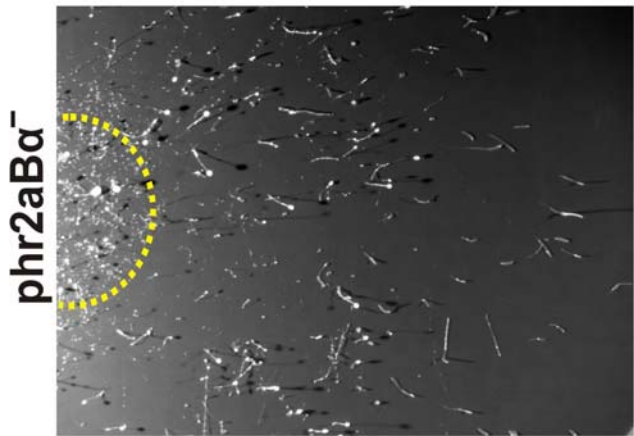
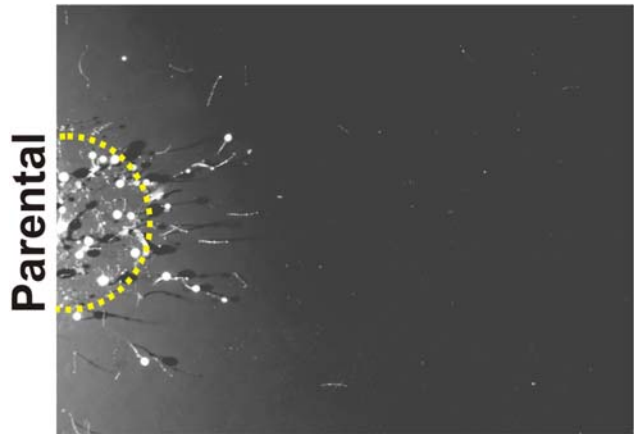


2
4
6
8
10
12
14
16
18
20
22
24
26
28
30
32
34
36
38
40
42
44
46
48
50
52
54
56
58
60
62
64
65
66
67
68
69
70
71
72
73
74
75



Supplemental Figure 1: RNA expression during the active chemotactic cell migration phase of development. Data was mined using the RNASeq database dictyExpress (at dictybase.org). **(A)**. Expression level of myosin II heavy chain gene mhc A (dictybase gene identifier number DDB_G0286355) and regulatory light chain mlc R gene (DDB_G0276077) over 24h of development. **(B)**. Expression level of myosin II heavy chain kinase genes mhk A (DDB_G0291231), mhk B (DDB_G0289115), and mhk C (DDB_G0290687) over 24h of development. **(C)**. Expression level of subunits of PP2A: the core catalytic subunit pho2a (DDB_G0290263), the core scaffolding subunit pppA (DDB_G0283601), and the B55-type targeting subunits phr2aB α (DDB_G0283905) and phr2aB β (DDB_G0293386).

Light Source
←



Supplemental Figure 2: phr2aB α and phr2aB β null cells display increased slug formation during phototactic migration on buffered-agar plates. Cells were concentrated and spotted on starvation buffer-agar plates and allowed to migrate for 48 hrs towards a pinhole light source. Cells were plated in ~10 mm spot at the left edge of each field of view (yellow dotted line).