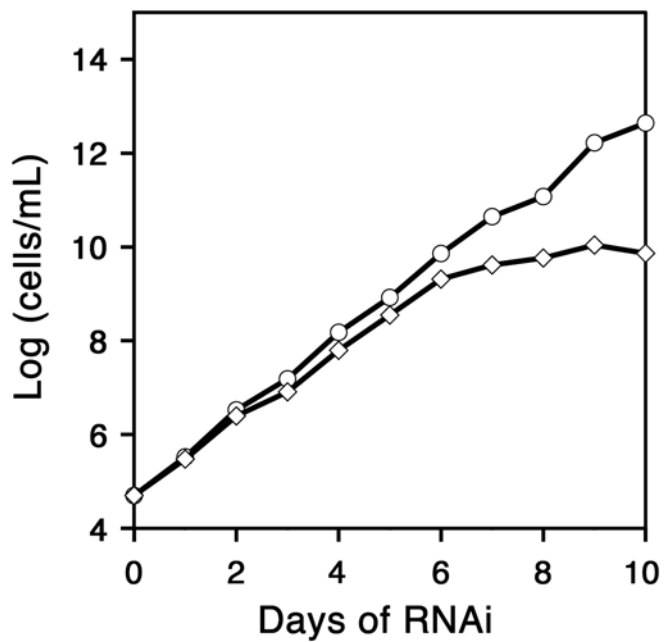


Supplemental Figure 1: Analysis of parasites recovered from POLIC clonogenic assays. (A-B) Parasites viable in clonogenic assays following POLIC RNAi were recovered and examined RNAi sensitivity and presence of kDNA. (A) Growth curve of parasites recovered from clonogenic assays (B) Images of DAPI-stained parasites that were grown in absence (-) or presence (+) of tetracycline. (C-D) Parasites recovered from clonogenic assays of uninduced cultures were assessed for RNAi sensitivity as in A-B.

A Clone Recovered Following
10 days of POLIC RNAi



C Clone Recovered from
Uninduced Control

