

Supplemental Figure 1 online: Climate regime of growing season and sampling conditions of greenhouse-grown Grey poplars

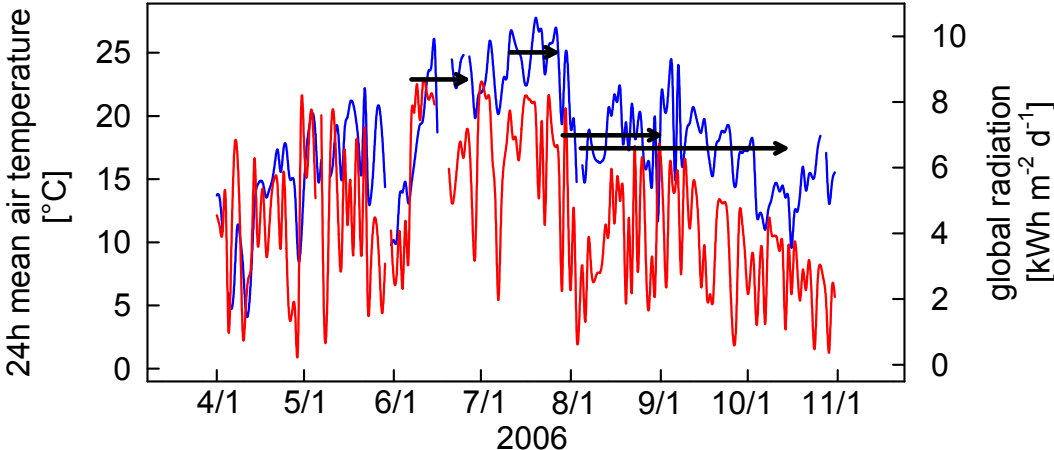


Figure S1 Climate regime of growing season (1st of April to 31st of October) and sampling conditions of greenhouse-grown Grey poplars. 24h mean of inside temperature in °C is indicated by the blue line and daily sum of outside global radiation in kWh m⁻² d⁻¹ by the red line. The arrows present the lifetime of harvested leaves (mean of all) where the end is the sampling date (06/28, 07/26, 09/05 and 10/14). Vertical position is according to the mean temperature experienced within the life time.