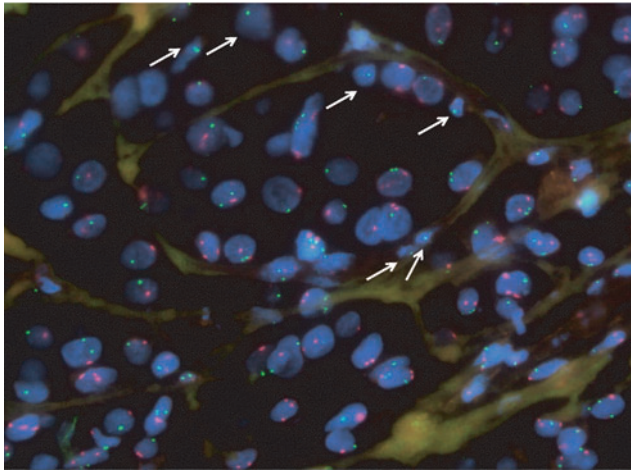
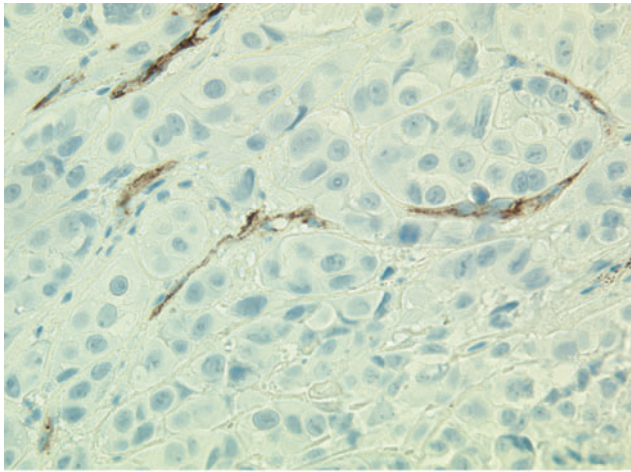
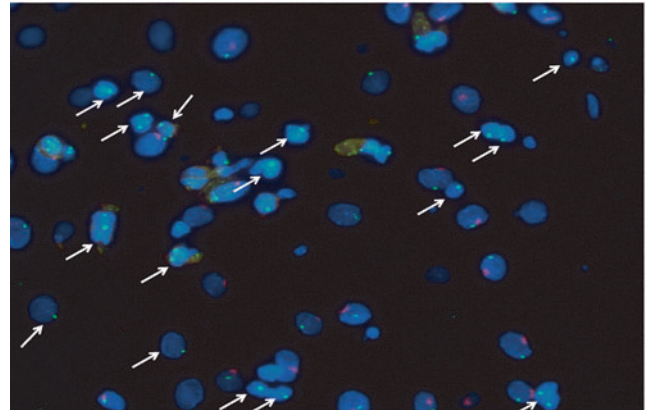
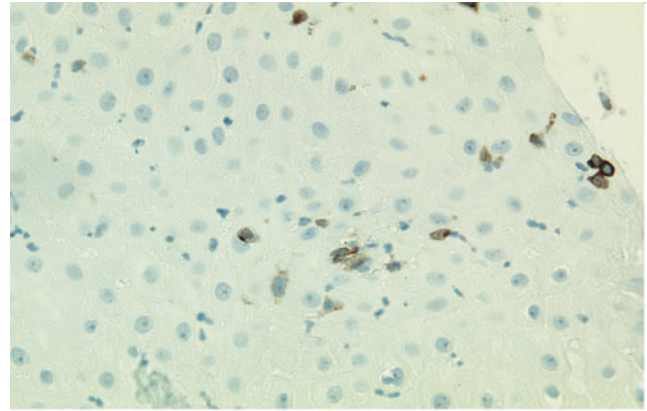


**SUPPLEMENTARY FIG. S1.** Specific immunohistochemistry and X/Y fluorescent in situ hybridization (FISH) analysis performed in tandem on the same slide. Immunohistochemistry to detect E-cadherin (epithelium) (*top panel*), and FISH to detect X (*green*) and Y (*red*) chromosomes. Image is the entire field that is cropped for Fig. 1 in the main article. Arrows highlight numerous 2× cells.

**SUPPLEMENTARY FIG. S2.** Specific immunohistochemistry and X/Y FISH analysis performed in tandem on the same slide. Immunohistochemistry to detect alpha smooth muscle actin (activated myofibroblasts within stroma) (*top panel*), and FISH to detect X (*green*) and Y (*red*) chromosomes. Image is the entire field that is cropped for Fig. 2 in the main article. Arrows highlight numerous 2× cells.



**SUPPLEMENTARY FIG. S3.** Specific immunohistochemistry and X/Y FISH analysis performed in tandem on the same slide. Immunohistochemistry to detect CD31 (endothelium) (*top panel*), and FISH to detect X (*green*) and Y (*red*) chromosomes. Image is the entire field that is cropped for Fig. 3 in the main article. Arrows highlight numerous 2× cells.



**SUPPLEMENTARY FIG. S4.** Specific immunohistochemistry and X/Y FISH analysis performed in tandem on the same slide. Immunohistochemistry to detect CD45 (leukocyte) (*top panel*), and FISH to detect X (*green*) and Y (*red*) chromosomes. Image is the entire field that is cropped for Fig. 4 in the main article. Arrows highlight numerous 2× cells.