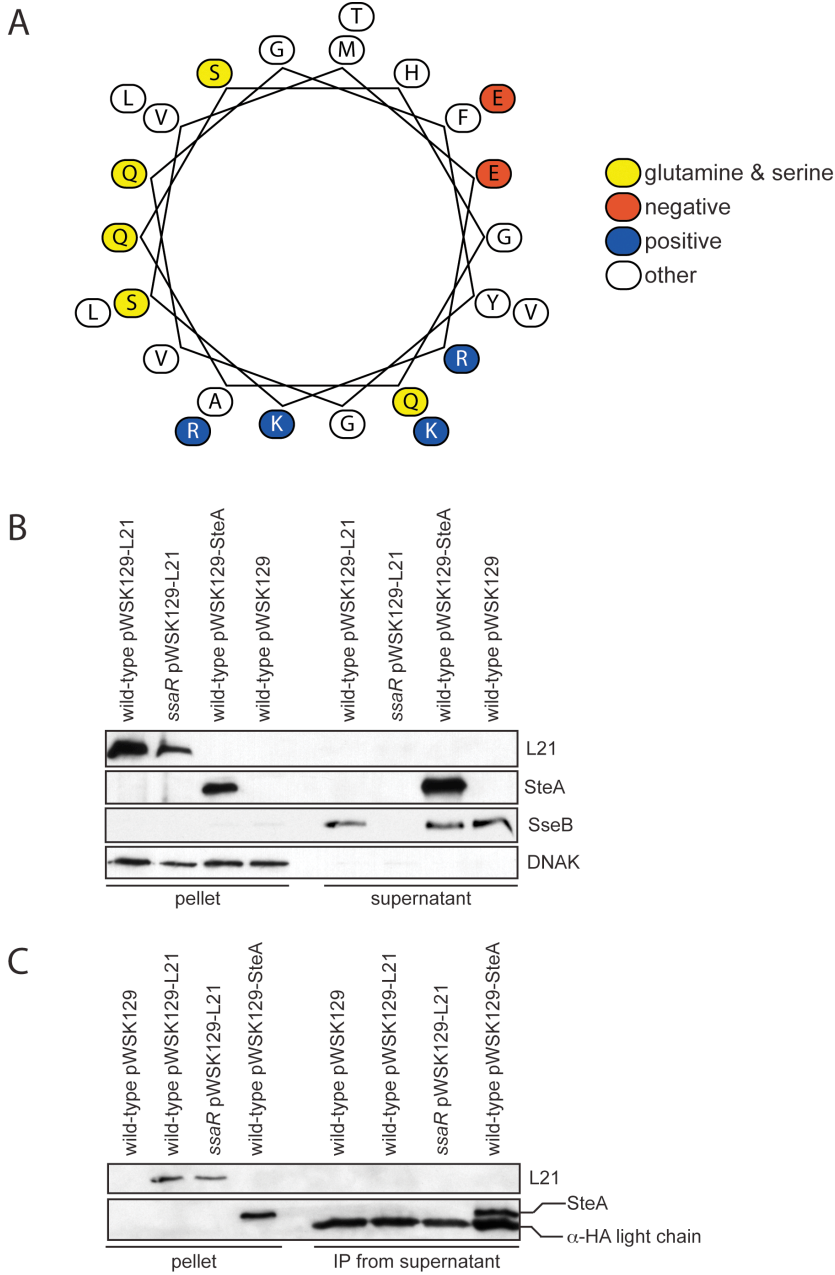


**SUPPLEMENTARY MATERIAL to Auweter et al.**

**Supplementary Figure S1**



**Supplementary Figure S1.** *In vitro* secretion analysis of L21. (A) The first 25 residues of L21 were modeled into a helical wheel plot. Blue indicates positively charged residues, red indicates negatively charged residues and yellow indicates glutamine and serine residues. (B) Western blot analysis of bacterial pellets and TCA-precipitated culture supernatants of wild-type SL1344 and  $\Delta$ ssaR grown in minimal medium (LPM) and transformed with either L21-2xHA or a control

plasmid. Western blots were probed with antibodies directed against HA (for detection of L21), DnaK (pellet control) and SseB (secretion control). (C) Western blot analysis of bacterial pellets and anti-HA immunoprecipitated culture supernatants of wild-type SL1344 and  $\Delta$ *ssaR* grown in minimal medium and transformed with either L21-2xHA or a control plasmid. Western blots were probed with antibodies directed against HA (for detection of L21).