

TA

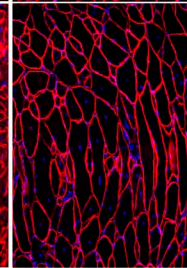
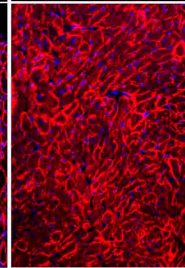
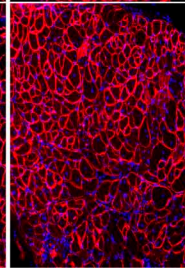
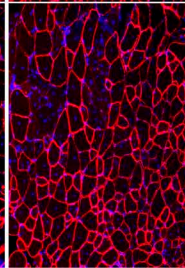
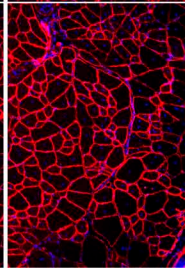
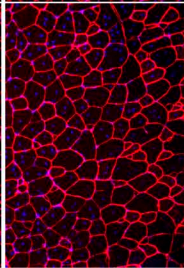
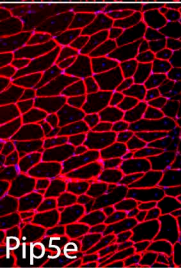
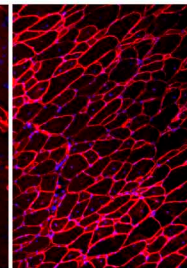
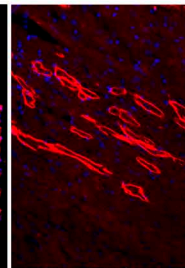
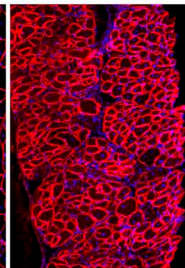
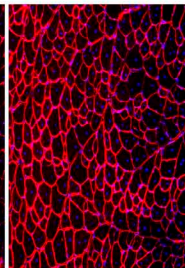
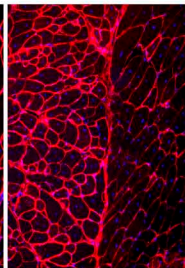
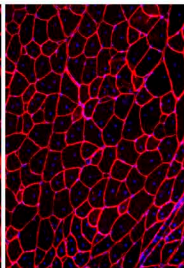
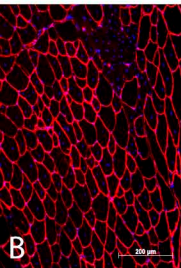
quadriceps gastrocnemius

biceps

diaphragm

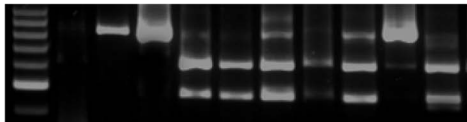
heart

abdominal



marker
-ve
c57
mdx
TA
quadriceps
gastrocnemius
biceps
diaphragm
heart
abdominal

B

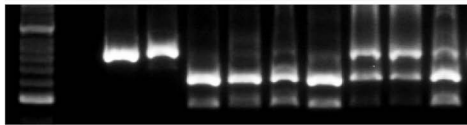


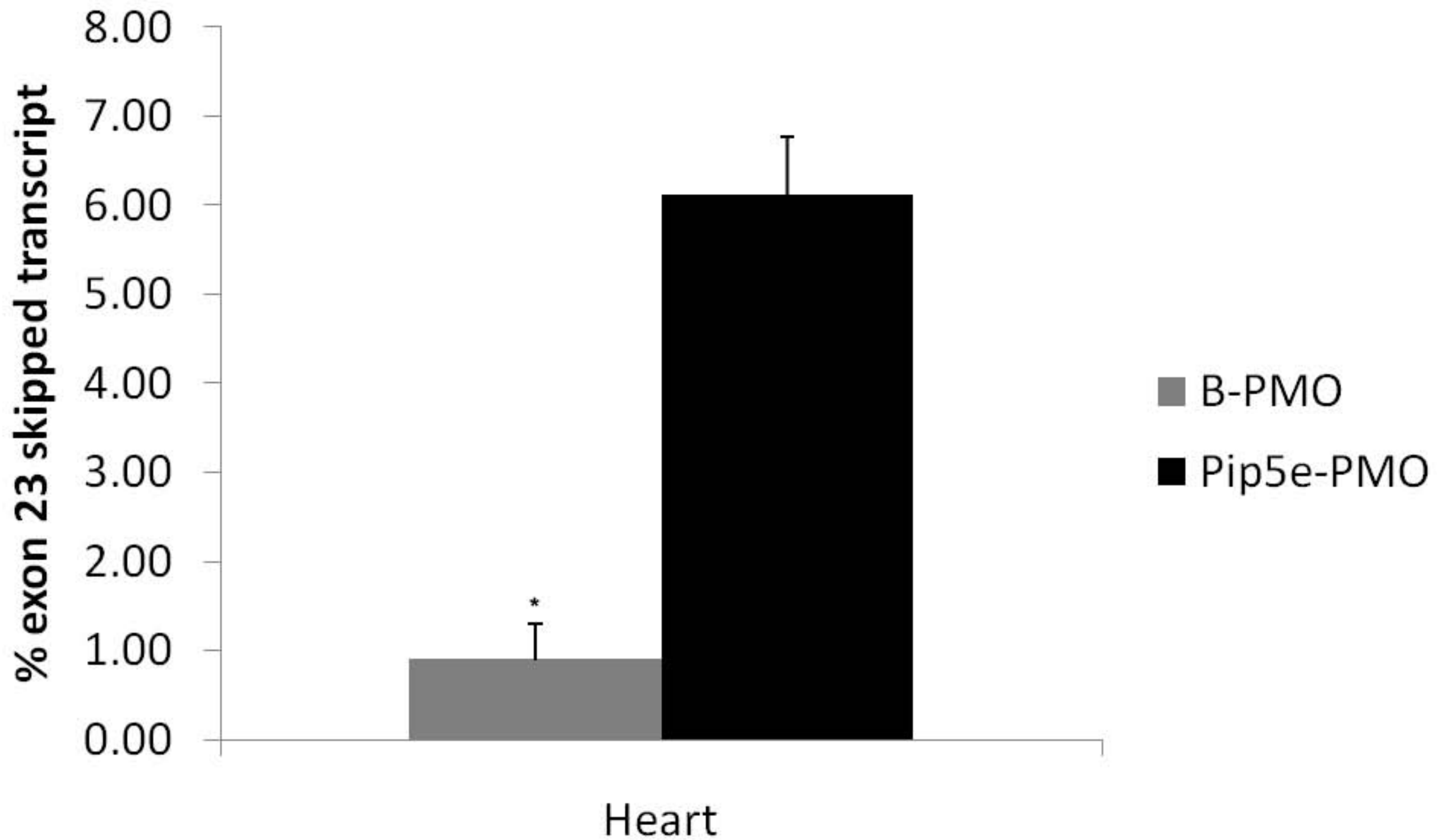
full-length

Δexon23

Δexon22&23

Pip5e





10% c57

mdx

TA

quadriceps

gastrocnemius
biceps

diaphragm

heart

abdominal

dystrophin

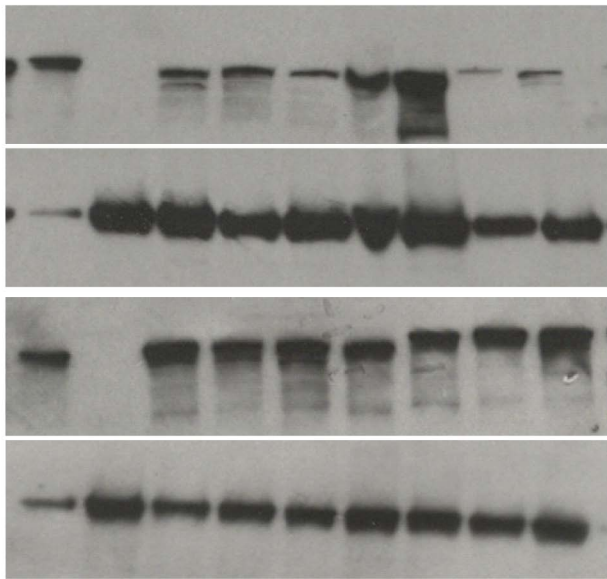
B

α -actinin

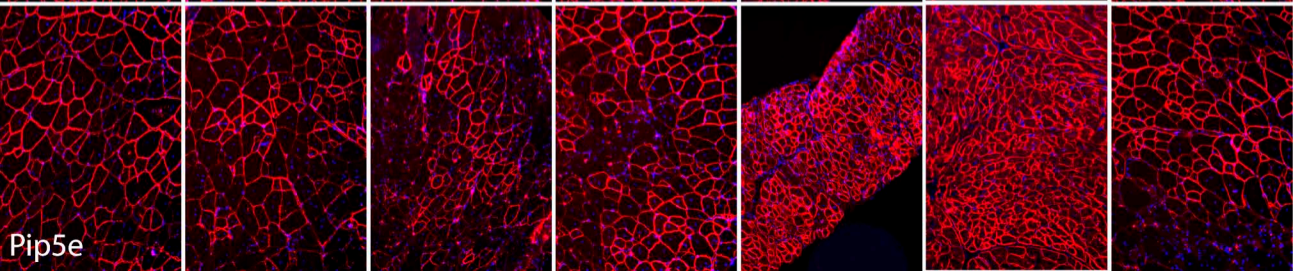
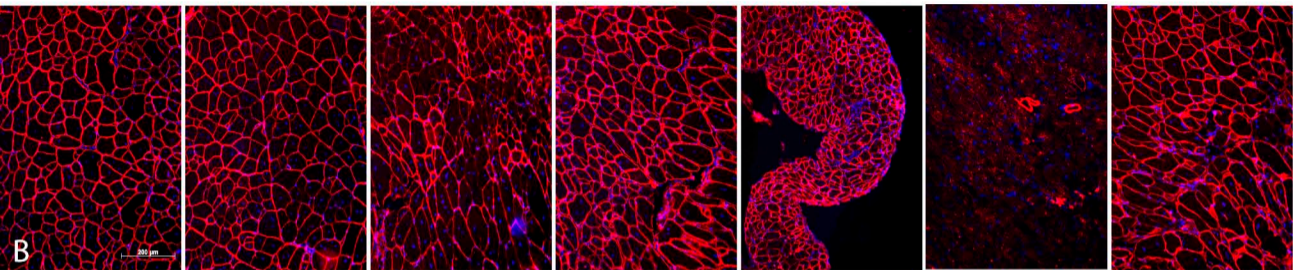
dystrophin

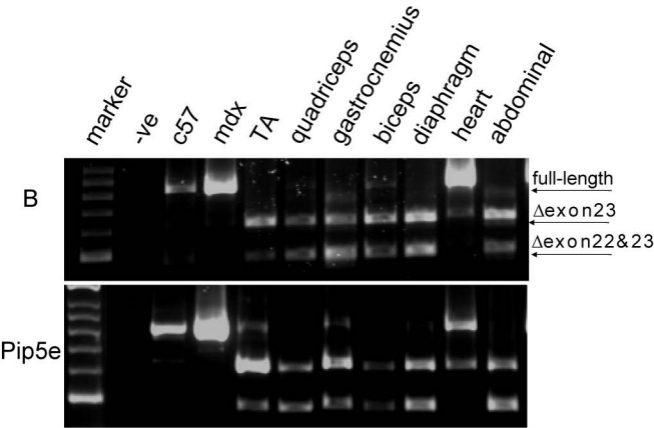
Pip5e

α -actinin



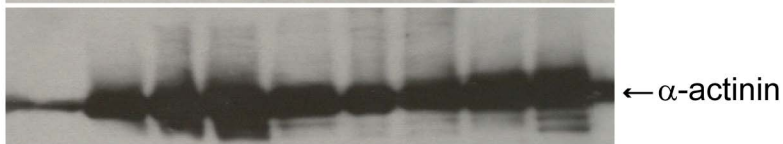
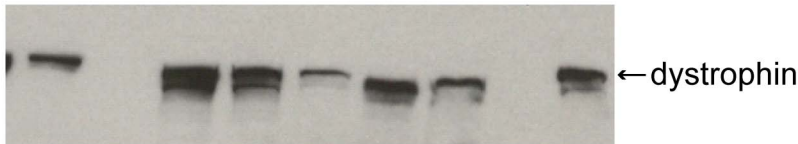
TA quadriceps gastrocnemius biceps diaphragm heart abdominal





10% c57
mdx
TA
quadriceps
gastrocnemius
biceps
diaphragm
heart
abdominal

B



Pip5e

