

Supplementary Fig 1

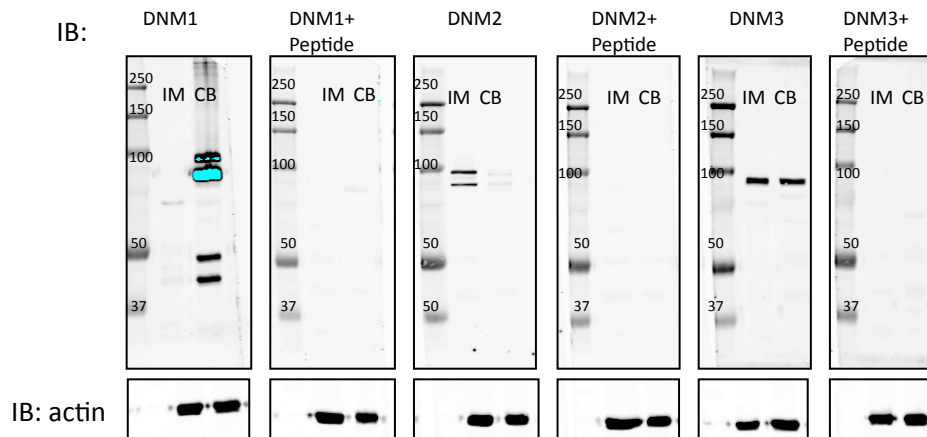


Fig S1: Antigen blockade of the three dynamin (DNM) antibodies used in this study. Twenty μ g of inner medullary (IM) and cerebellar (CB) homogenates were loaded. All three antibodies were blocked with their respective peptides, suggesting specific binding of the antibody to the DNMs present in these tissues. Bottom bands represent β -actin loading controls.