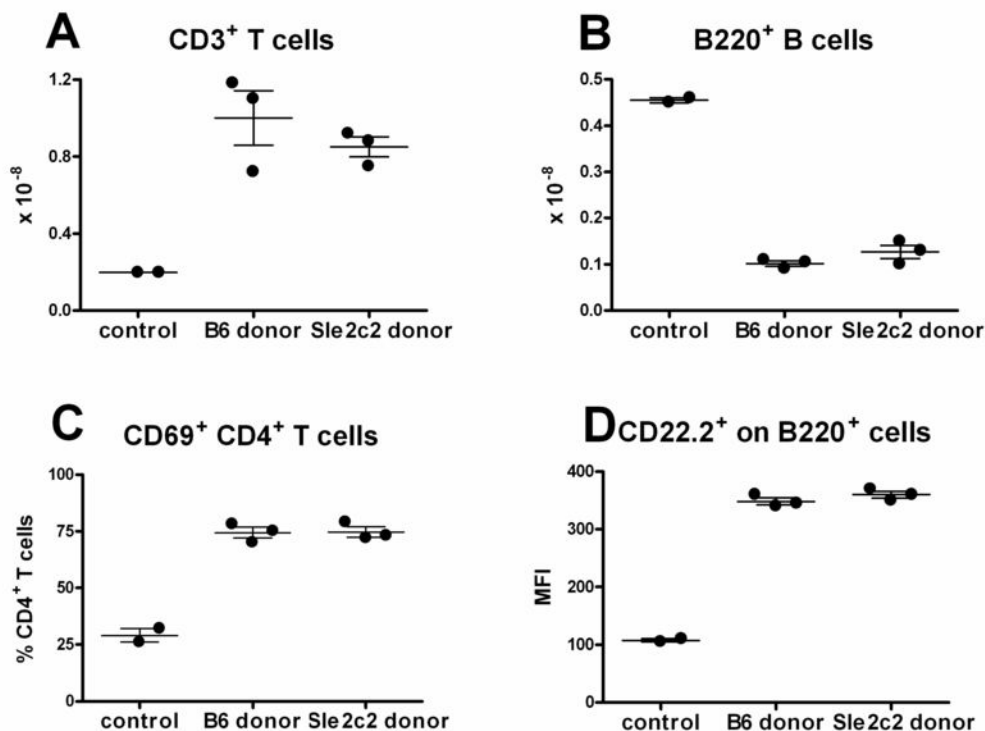


Sup. Figure 1



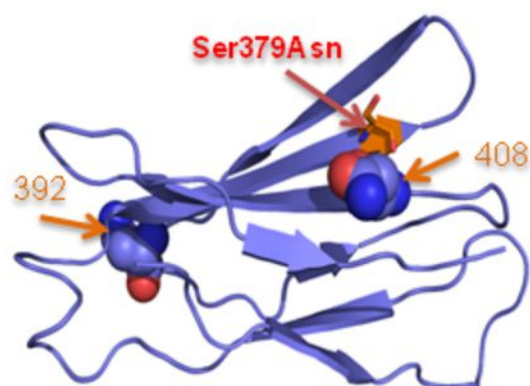
Supplemental Fig. 1. cGVHD resistance in B6.*Sle2c2* mice is not due to hypo-responsive T cell alloresponses. Phenotypes of BDF1 mice that have received either B6 or B6.*Sle2c2* splenocytes 2 wks after PF1 aGVHD. Unmanipulated BDF1 mice served as controls. **A.** CD3⁺ cell numbers. **B.** B220⁺ B cell numbers. **C.** CD69 expression on CD4⁺ T cells. **D.** CD22.2⁺ expression on B220⁺ B cells. The graphs show means and SEMs. Values for either B6 or B6.*Sle2c2* donors were significantly from controls for all phenotypes ($p < 0.01$).

Sup. Fig. 2

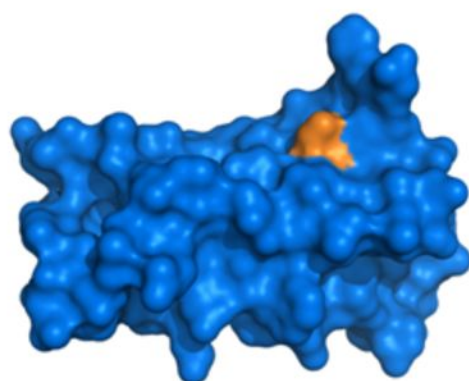
A

Homo sapiens	SDWSPSLELRTERAPVRLDHWWRQRLDPRTVQLFWKPVPLEE--DSGRIQGYVVSWRP	SGQAGAILPLCNYTELSCT	396
Pan troglodytes	SDWSPSLELRTEWAPVRLDHWWRQRLDPRTVQLFWKPVPLEE--DSGRIQGYVVSWRP	SGQAGAILPLCNYTELSCT	396
Canis familiaris	SDWSPSLTLTTAQRAPVRLDHWWRQRLDPRTADMQLFWKPTPL--DRYSGQIQGYLV	PAGPAGASPPLCNYTELSCT	396
Mus musculus	SDWSPGLQLRPTMKAPTIRLDHWQKKQLDPGTVSVQLFWKPTPLQEDSGQIQGYLLSW	SPDHQGDHLCNYTQLSCI	399
Rattus norvegicus	SDWSPGLQLRPTIKAPTIRLDHWQKKHLDPETVRMQLFWKPTPLQKDSGQIQGYLLSW	SPDGQGRIMHLCNYTELSCT	399
Gallus gallus	SDWVSRRNYTTHEKAPGKLDHWSTR-TAAGRMEVQLRWKAPRQEQANGRVLGYRVALG	SRRRGREPQTVCNQDTHCD	350
Danio rerio	SDWSDPKTATTLNKAPGRLDHWLKVN-----NQTAQLYWKPSQQFRANGQNLSVSDSK	DTTKR-----LCVITETVCF	376

B



C



Supplemental Fig. 2. Analysis of the rs13477964 Ser379Asn polymorphism in the *Csf3r* gene. **A.** The Ser379Asn is only conserved between the mouse and rat gene, but not with five other mammalian species. The amino acids corresponding to the mouse Ser379Asn are boxed in red. Ribbon (**B**) and filled (**C**) structure of the predicted FNIII domain that contains the Ser379Asn residue shown in orange. Also shown in B are the positions of two neighboring predicted N-linked glycosylated Asn (392 and 408).