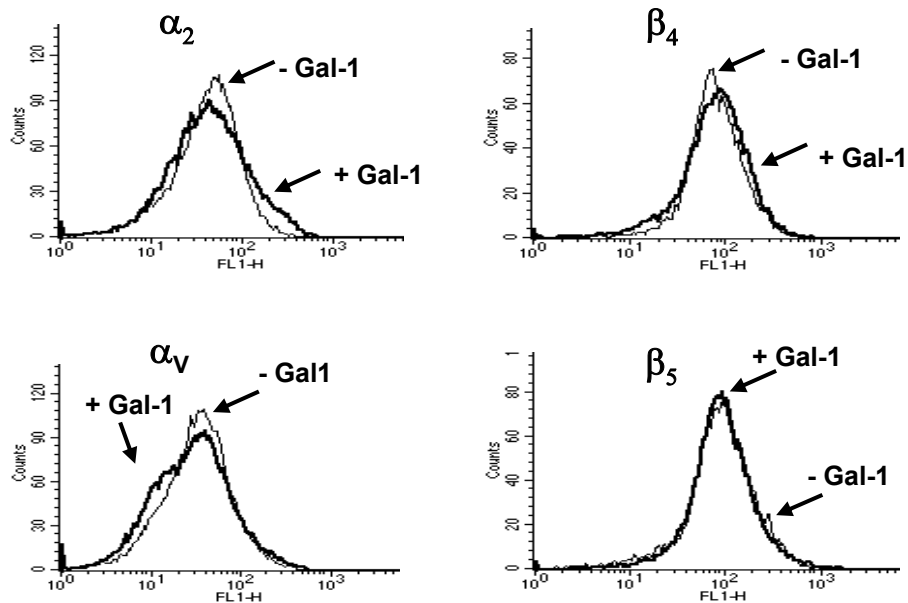
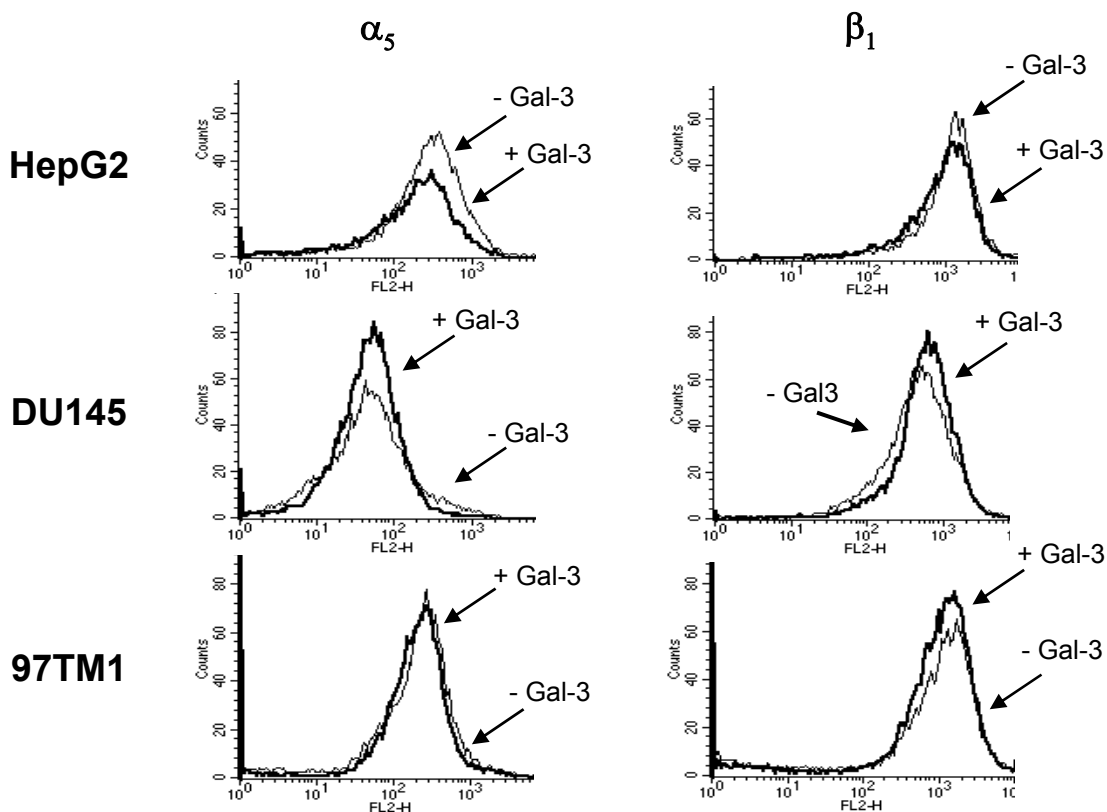


a**b**

Cell surface presentation of integrins and the effect of treatment with Gal-1 and Gal-3. Cells were kept on PolyHEMA-coated dishes and stimulated with galectins or vehicle for one hour. Integrin subunits on the surface of cells were then detected by immunostaining and quantitated by flow cytometry. (a) Determination of α_2 -, β_4 -, α_V - and β_5 -integrin subunits on the surface of HepG2 cells that had been incubated with 125 $\mu\text{g/ml}$ Gal-1 (+ Gal-1) or with vehicle (-Gal-1). Gal-1 had no effect on the surface presentation of α_2 -, β_4 -, α_V - and β_5 -integrins. (b) Effects of Gal-3 stimulation (125 $\mu\text{g/ml}$, +Gal-3) or vehicle (-Gal-3) on surface presentation of $\alpha_5\beta_1$ -integrin in HepG2, DU145 and 97TM1 cells, which readily internalize this integrin upon stimulation with Gal-1. Gal-3 stimulation did not affect the amount of $\alpha_5\beta_1$ -integrin on the cell surface.