

tctg cgaccgatgt gaaggatttt ctggtgcgtc tgtgcgaccg tgaaccatgc ctcgctcgtt
sct2^{MO2} sct2^{MO1}

Figure S3. Sequences of morpholino oligonucleotides and distribution of the injected fluoresceinated MO1 in the developing zebrafish embryo. Fluoresceinated MO1 was injected at the one cell stage. Note its distribution throughout the embryo at 75% epiboly.

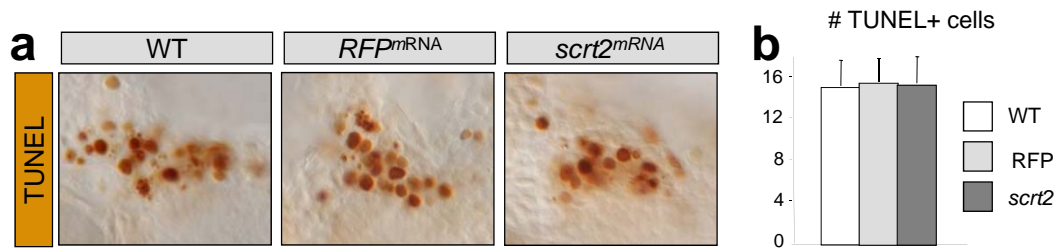


Figure S4. *scratch2* overexpression does not protect from endogenous cell death. (a) Normal embryos (WT) or injected with an irrelevant mRNA (red fluorescent protein, RFP) or with *scratch2* mRNA. 24hpf embryos were subjected to TUNEL staining, flat-mounted and photographed at the level of the trigeminal ganglion. Anterior is to the left. (b) Quantification of TUNEL-positive trigeminal cells of the corresponding embryos. 8 different trigeminal ganglia were counted per condition. No statistical significance in t-test was found in the number of apoptotic cells between *scrt2* overexpression and the control conditions.