

Information about the use of this interactive 3D-pdf

Inflow

Myocardium Cx40 –

Mesenchyme

Umbilicovitelline vein

Left cardinal vein

Right cardinal vein

Hepatic Lumen

Liver

Atrium

Myocardium Cx40 –

Myocardium Cx40 +

Mesenchyme

Lumen

Outflow

Myocardium Cx40 –

Myocardium Cx40 +

Mesenchyme

Lumen

Various


Splanchnic plexus / Pulmonary vein

Endoderm

Splanchnic Mesoderm

Coelom

Somatic Mesoderm

 Heart Failure Research Center
<http://3d.hfrc.nl>

To interact with the reconstructions

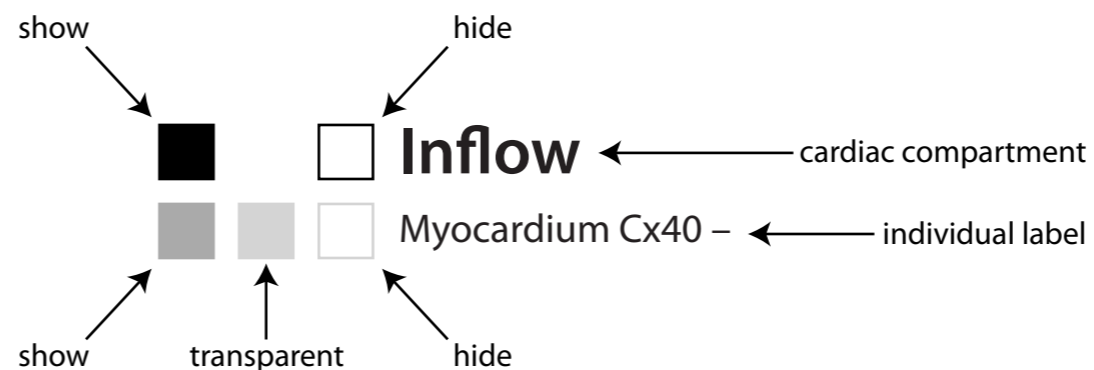
Rotate: Hold left mouse-button and move mouse.

Zoom: Hold right mouse-button and move mouse up or down.

Translate: Hold left and right mouse-buttons and move mouse.

Selection of structures

The left panel contains buttons for each structure to either show, hide, or make transparent. For the the oldest stages, there are also buttons to collectively show or hide cardiac compartments (inflow, atrium, outflow, and various).



Selection of preset views

The bottom panel contains several preset views. Click to select such a view.

Link to our website

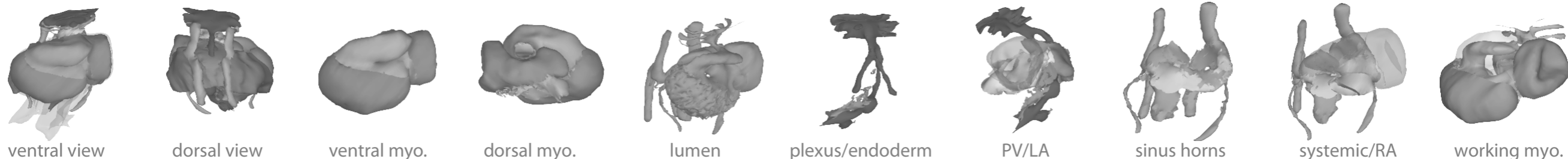
Click on AMC-logo to visit our website.

Technical Notes

This PDF file is preferably viewed in Adobe Reader® 9.3 or higher (<http://www.adobe.com/downloads/>)
Javascript must be enabled.

Open *Edit* ⇒ *Preferences* to ensure the following:

- 1) In *3D& Multimedia*, under *3D Tool Options*
 - for *Open Model Tree on 3D Activation* choose *Use Annotation's Settings*
 - for *Default Toolbar State* choose *Use Annotation's Settings*
 - disable *Show 3D Orientation Axis*
- 2) In *3D& Multimedia*, under *Auto-Degrade Options*
 - for *Optimization Scheme for Low Framerate* select *None*
- 3) In *JavaScript*, under *JavaScript*
 - enable *Enable Acrobat JavaScript*



Interactive Reconstruction of 2-day-old Chicken Embryo

Intracardiac



Extracardiac



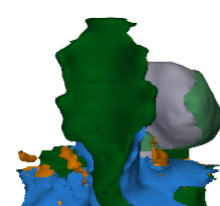
Lumen



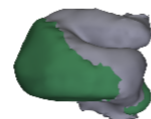
Heart Failure
Research Center
<http://3d.hfrc.nl>



frontal view



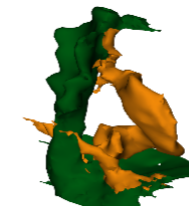
dorsal view



frontal - myo



dorsal - myo



foregut/lumen



foregut/plexus

Interactive Reconstruction of 3-day-old Chicken Embryo

Intracardiac



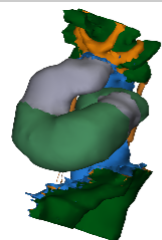
Extracardiac



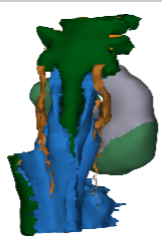
Lumen



Heart Failure
Research Center
<http://3d.hfrc.nl>



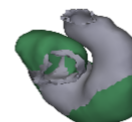
frontal view



dorsal view



frontal - myo



dorsal - myo



foregut/lumen



foregut/plexus

Interactive Reconstruction of 4-day-old Chicken Embryo

- Inflow**
- Myocardium Cx40 -
 - Mesenchyme
 - Umbilicovitelline vein
 - Left cardinal vein
 - Right cardinal vein
 - Hepatic Lumen
 - Liver

- Atrium**
- Myocardium Cx40 -
 - Myocardium Cx40 +
 - Mesenchyme
 - Lumen

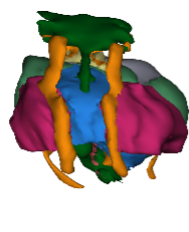
- OX!hWfdUW**
- Myocardium Cx40 -
 - Myocardium Cx40 +
 - Mesenchyme
 - Lumen

- Various**
- Splanchnic plexus / Pulmonary vein
 - Endoderm
 - Splanchnic Mesoderm
 - Coelom
 - Somatic Mesoderm


 Heart Failure Research Center
<http://3d.hfrc.nl>



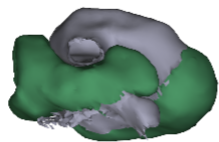
ventral view



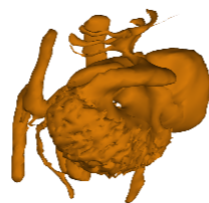
dorsal view



ventral myo.



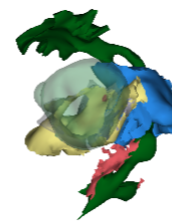
dorsal myo.



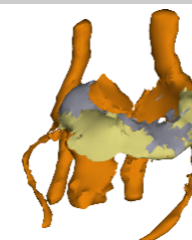
lumen



plexus/endoderm



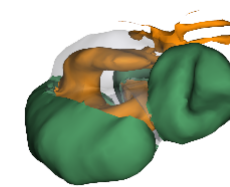
PV/LA



sinus horns




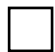



















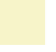




systemic/RA




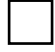












working myo.

Interactive Reconstruction of 5-day-old Chicken Embryo















Inflow

-   Inflow
-    Myocardium Cx40 -
-    Myocardium Cx40 +
-    Umbilicovitelline vein
-    Left cardinal vein
-    Right cardinal vein
-    Hepatic Lumen
-    Mesenchyme
-    Base of epicardium










Atrium

-   Atrium
-    Myocardium Cx40 -
-    Myocardium Cx40 +
-    Mesenchyme
-    Lumen

OX! hWfdUW

-   OX! hWfdUW
-    Myocardium Cx40 -
-    Myocardium Cx40 +
-    Mesenchyme
-    Lumen

Various

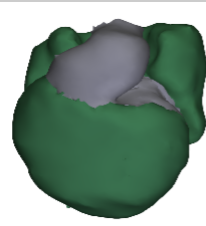
-    Splanchnic plexus / Pulmonary vein
-    Endoderm
-    Coelom



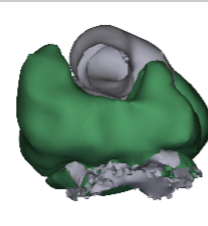
ventral view



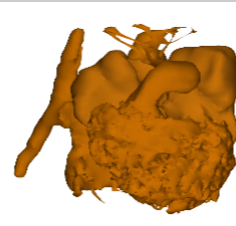
dorsal view



ventral myo.



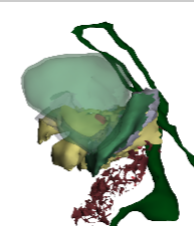
dorsal myo.



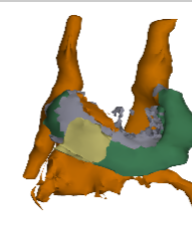
lumen



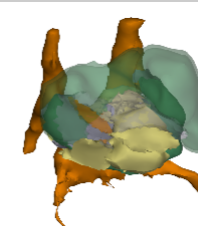
plexus/endoderm



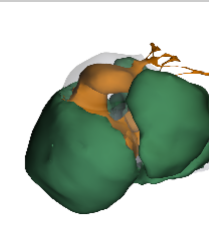
PV/LA



sinus horns



systemic/RA



working myo.