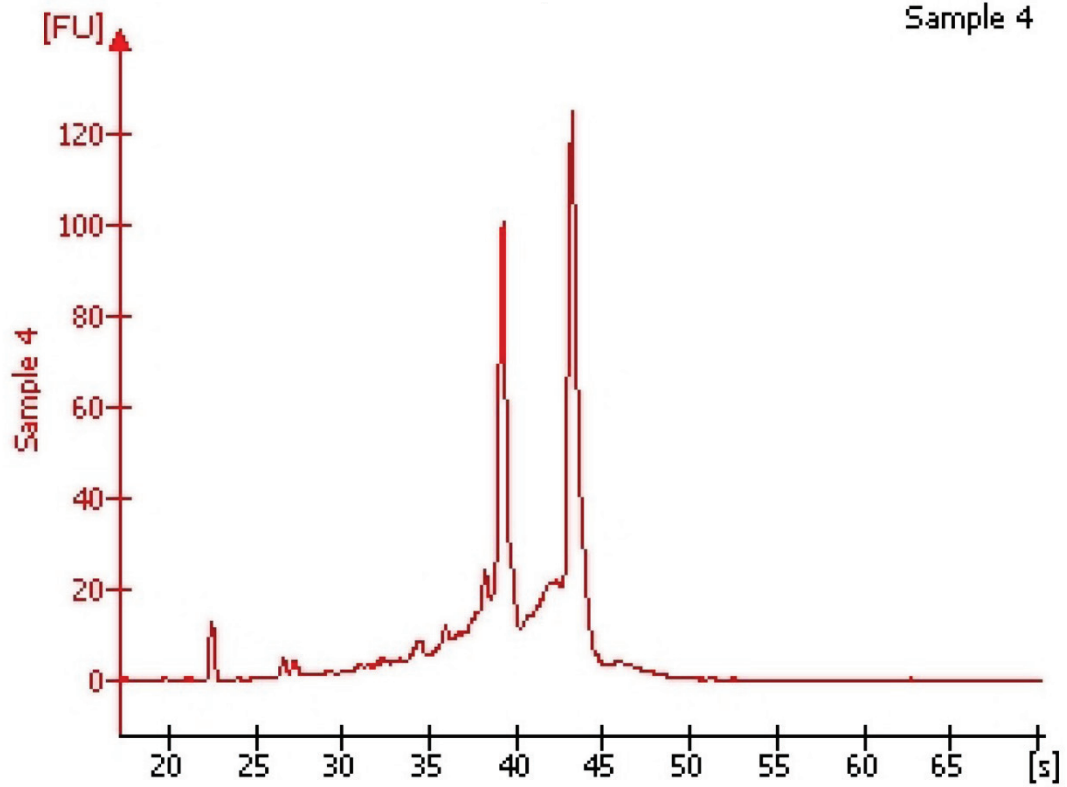


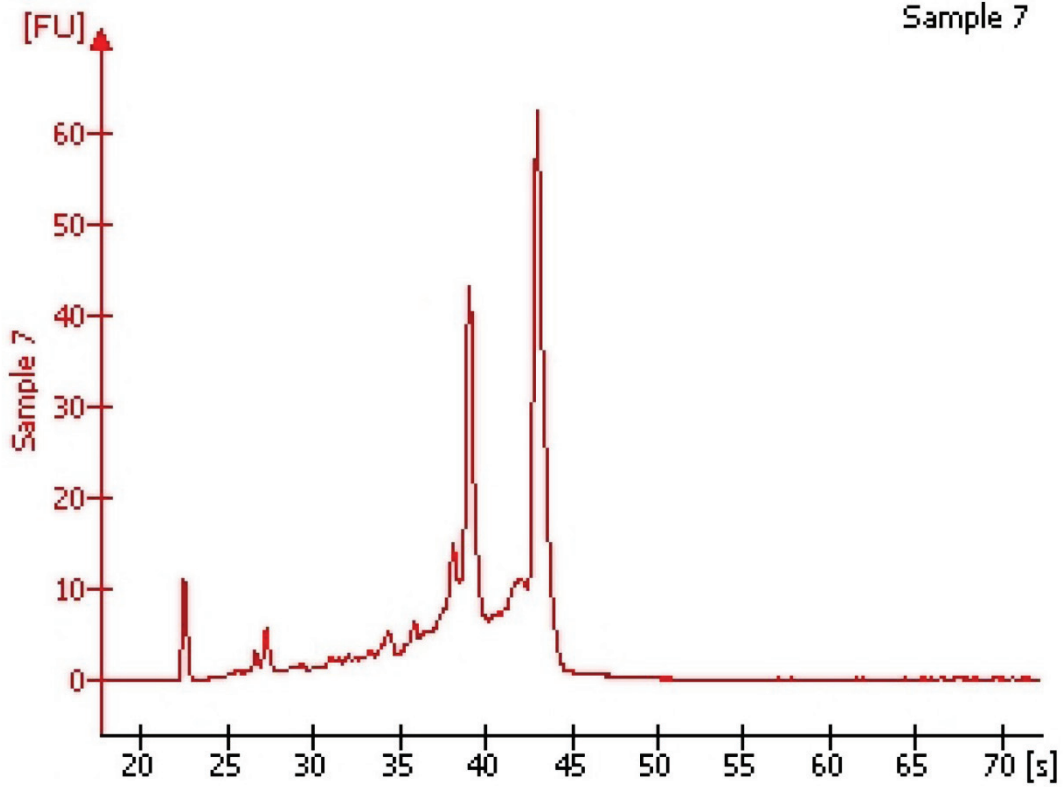
# Ethylene before curing - Rep 1

Sample 4



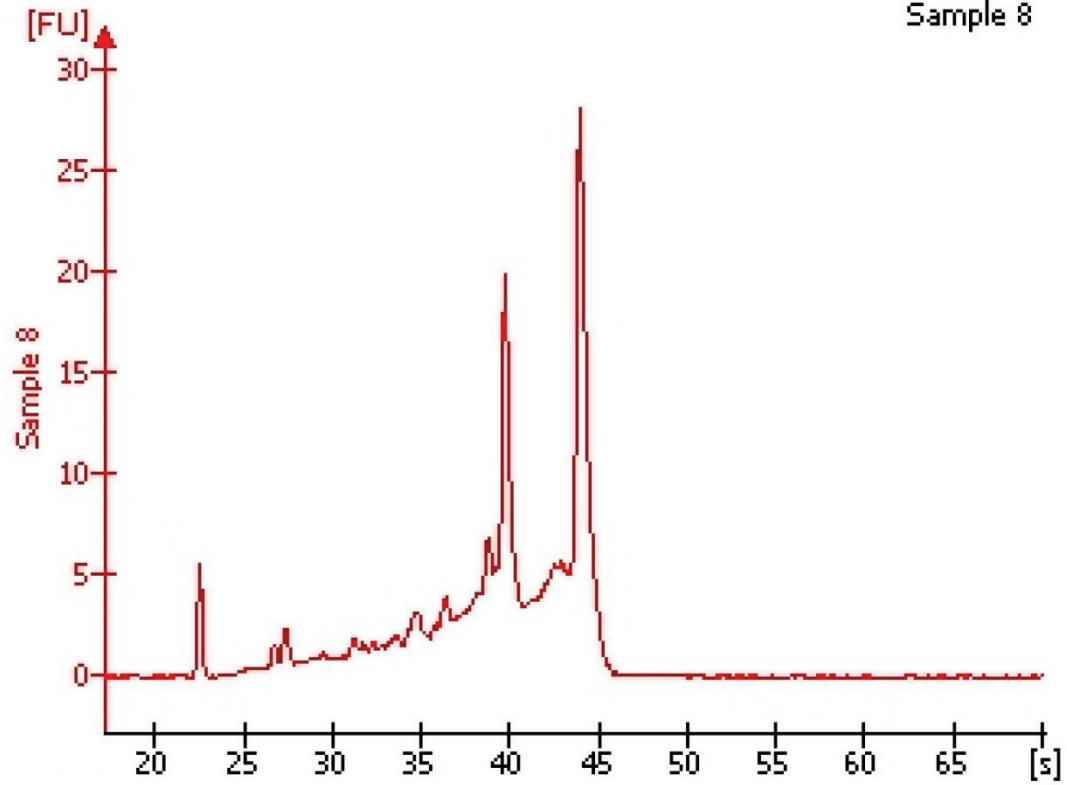
# Ethylene before curing - Rep 2

Sample 7

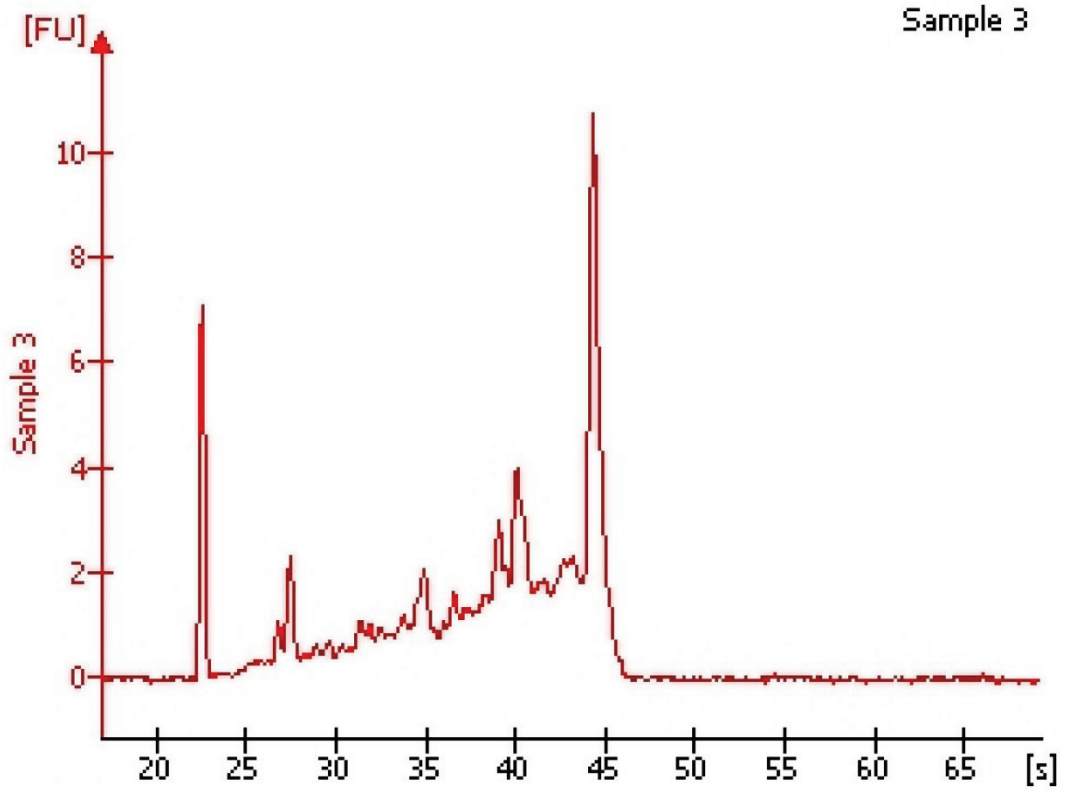


# Ethylene before curing - Rep 3

Sample 8

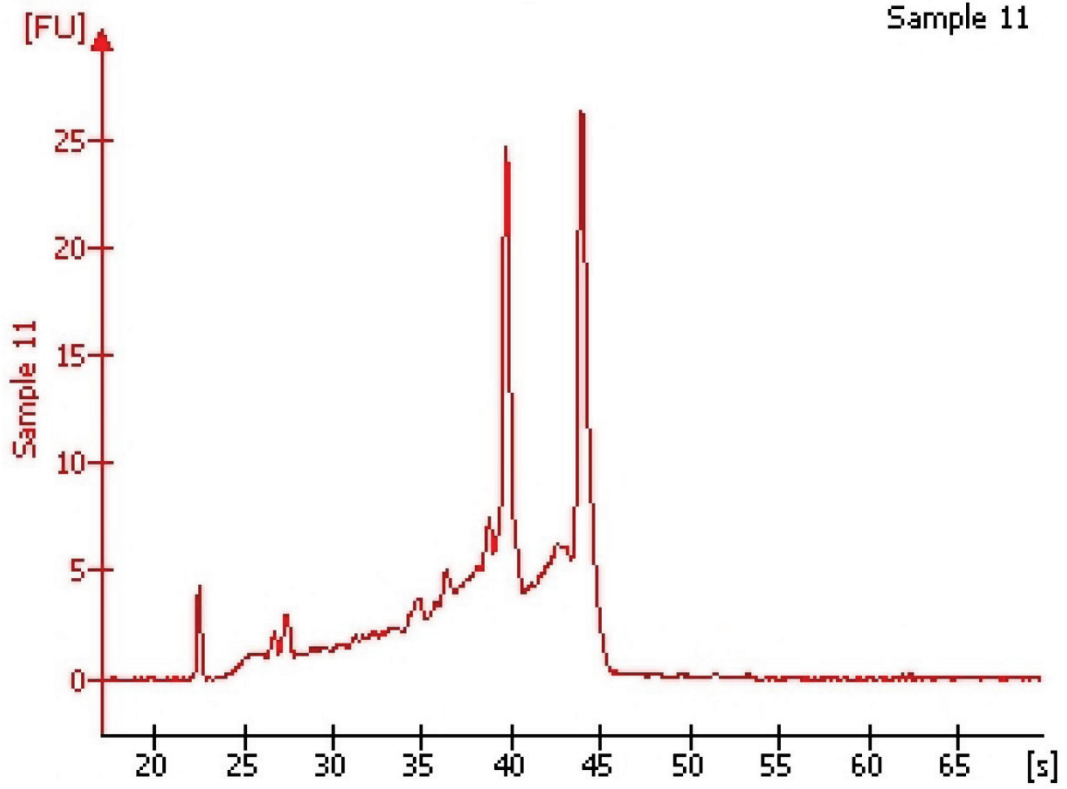


# Control - Rep 1



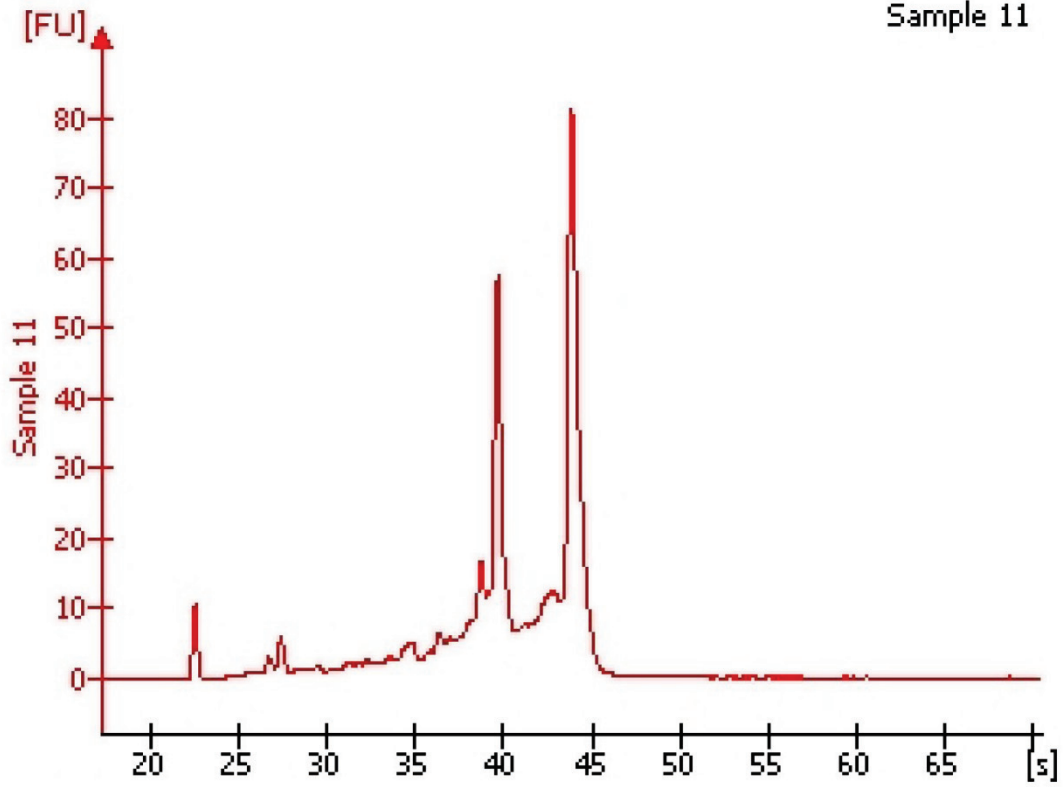
# Control - Rep 2

Sample 11



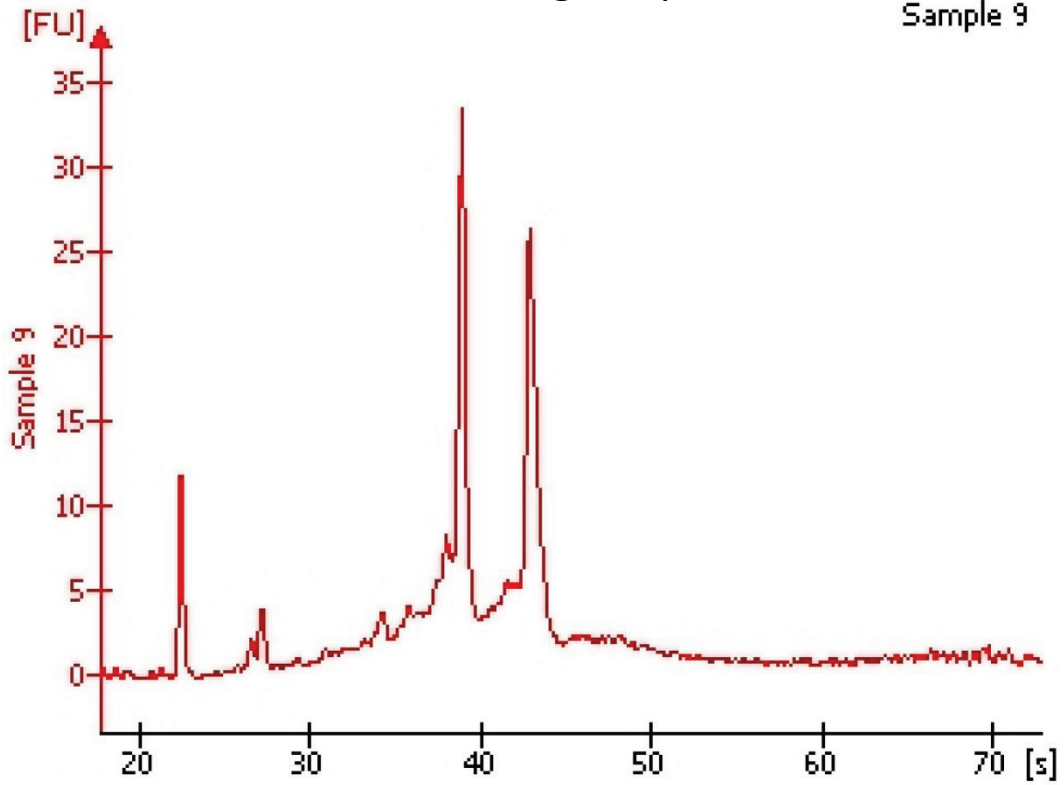
Control - Rep 3

Sample 11



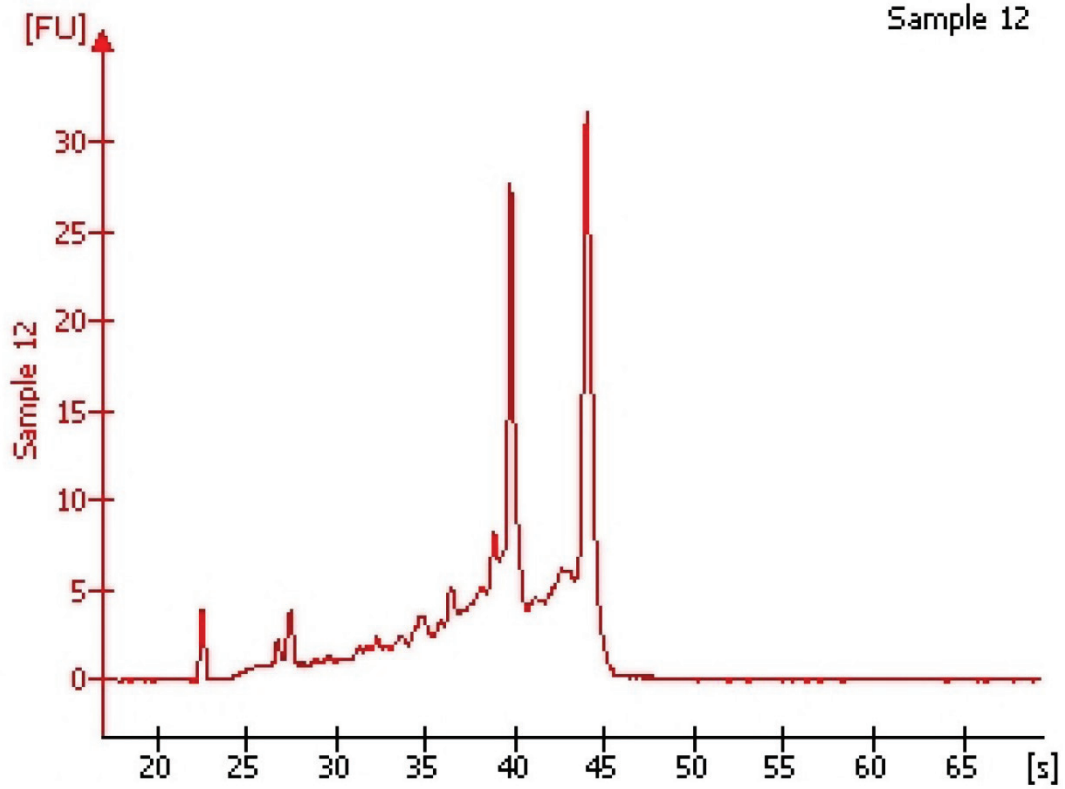
# 1-MCP before curing - Rep 1

Sample 9



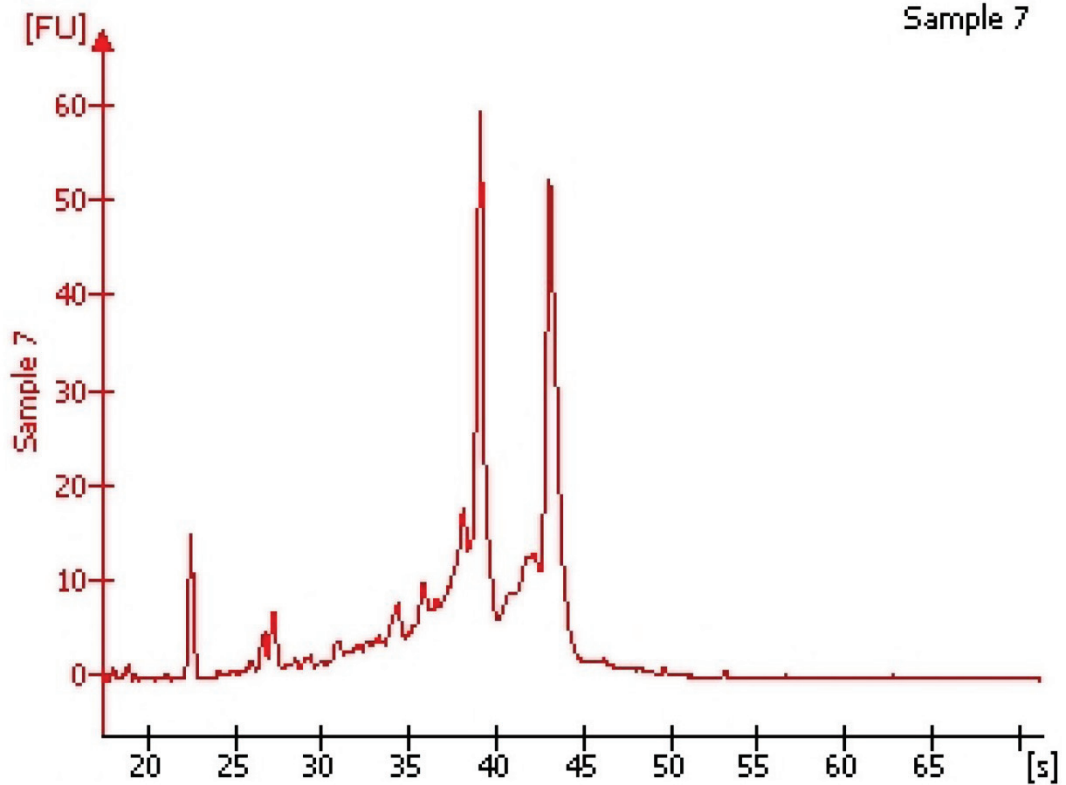
# 1-MCP before curing - Rep 2

Sample 12





# 1-MCP before curing - Rep 3

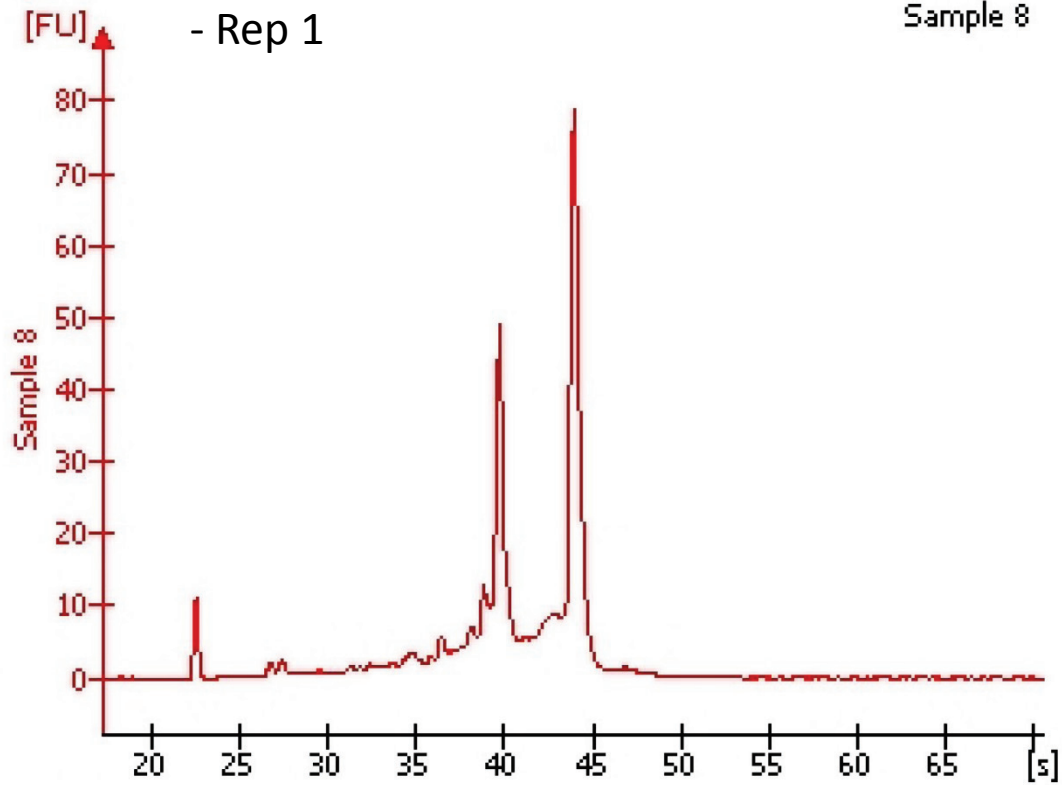


Sample 7



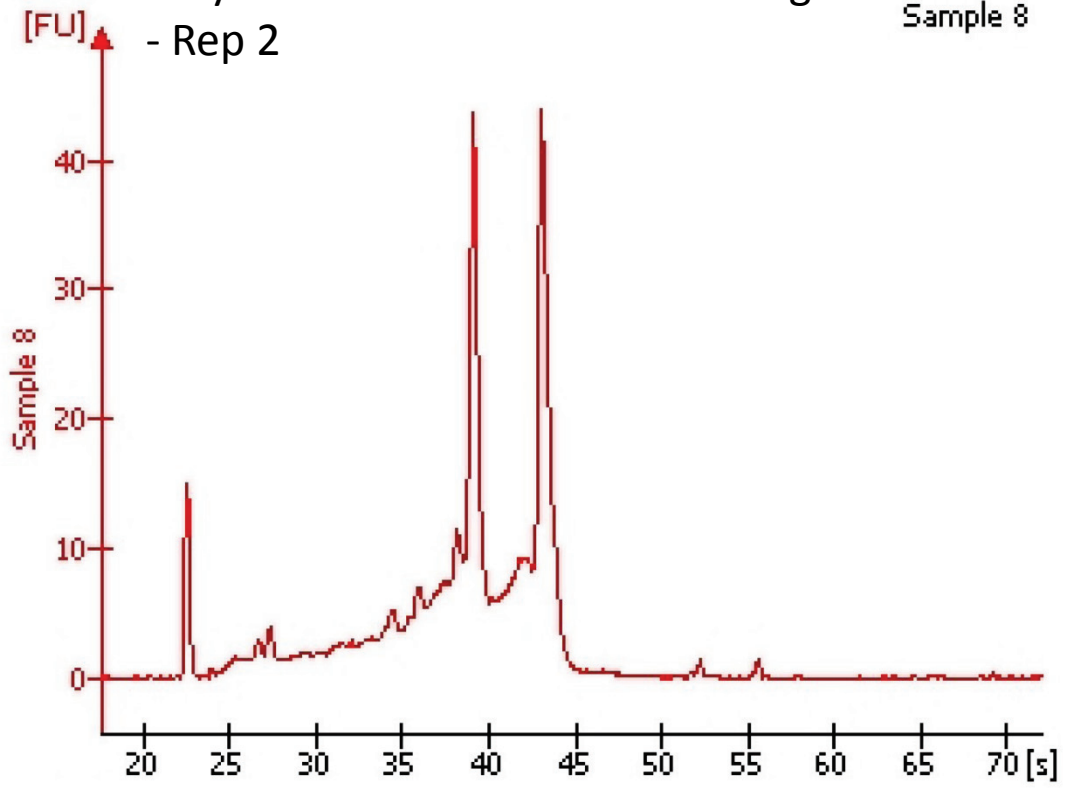
Ethylene and 1-MCP before curing  
- Rep 1

Sample 8



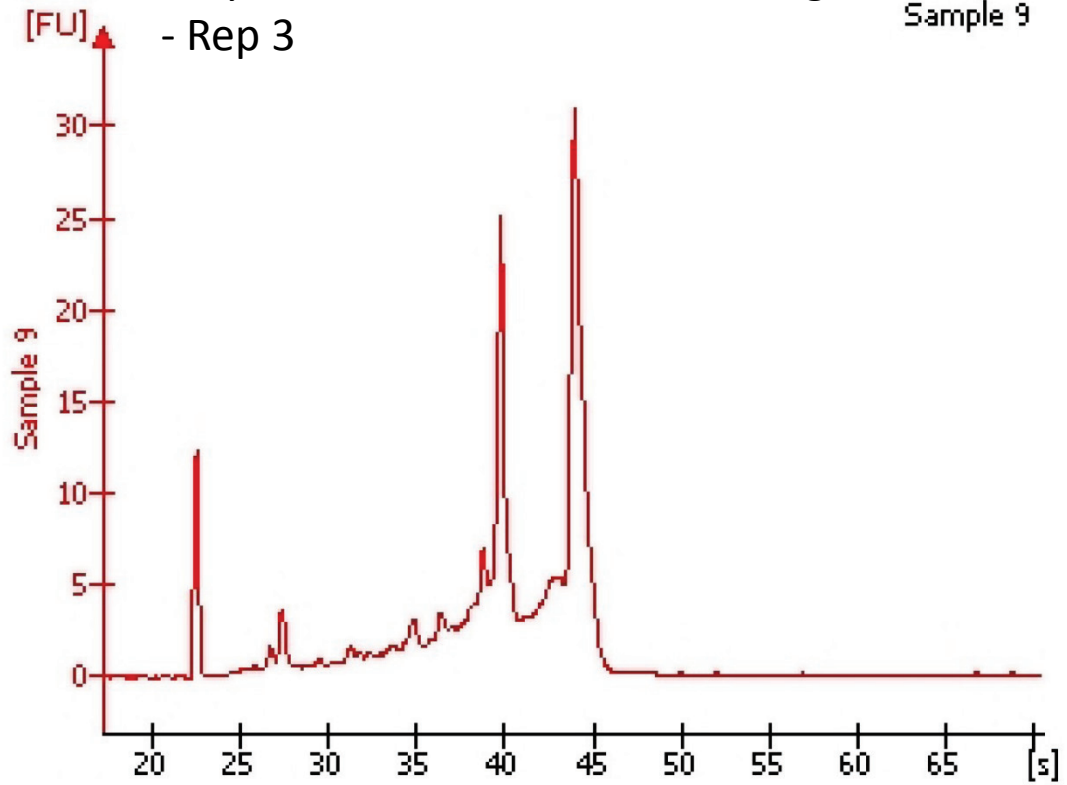
Ethylene and 1-MCP before curing  
- Rep 2

Sample 8

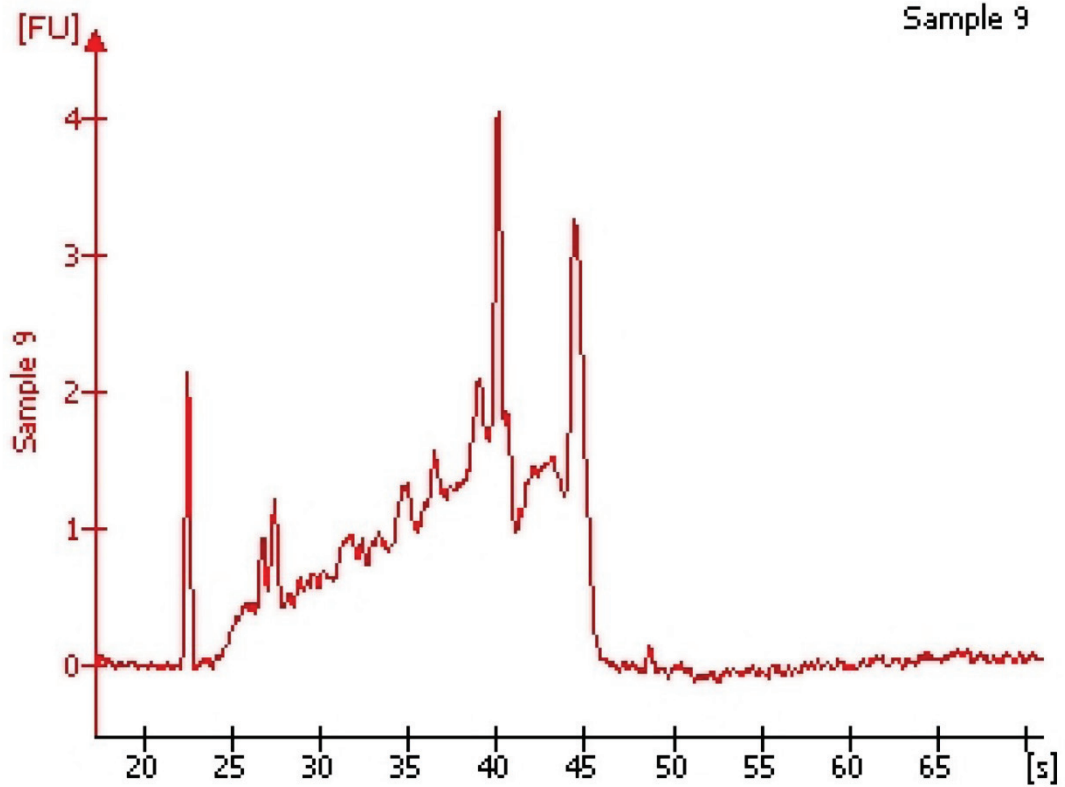


Ethylene and 1-MCP before curing  
- Rep 3

Sample 9



# Continuous air - Poland - Rep 1

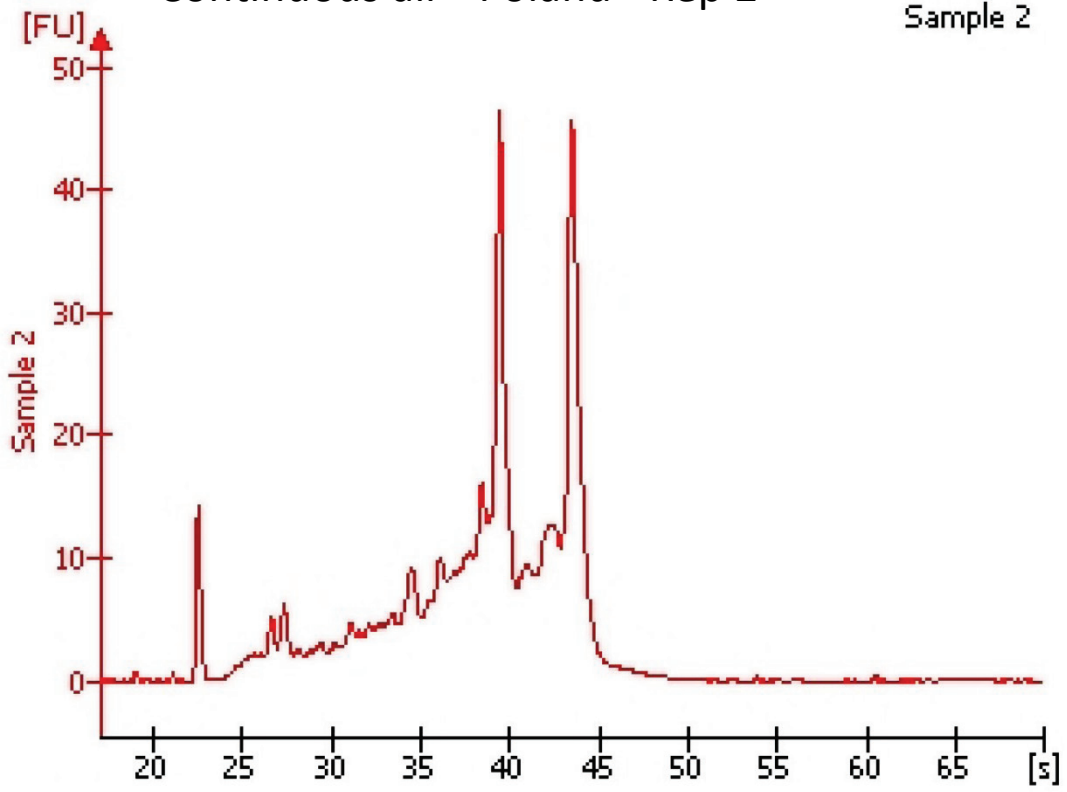


Sample 9

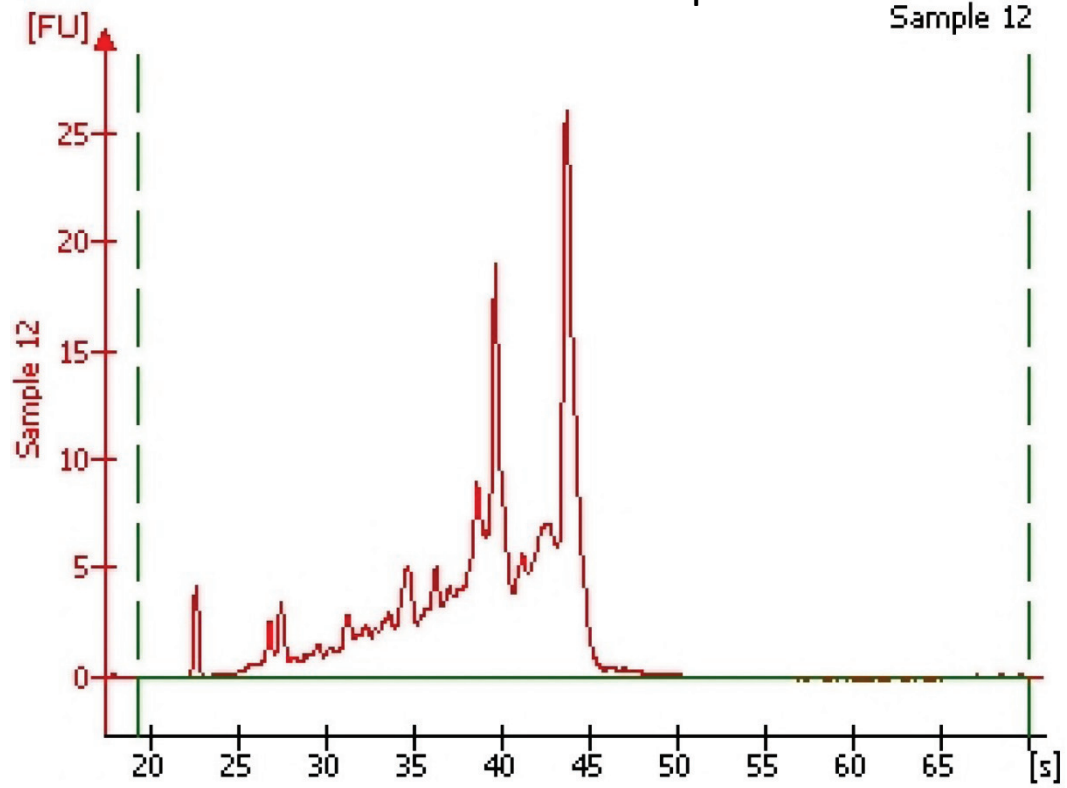


# Continuous air - Poland - Rep 2

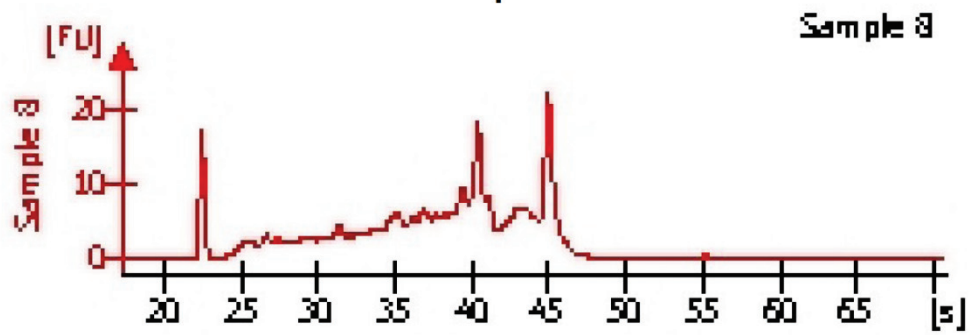
Sample 2



# Continuous air - Poland - Rep 3



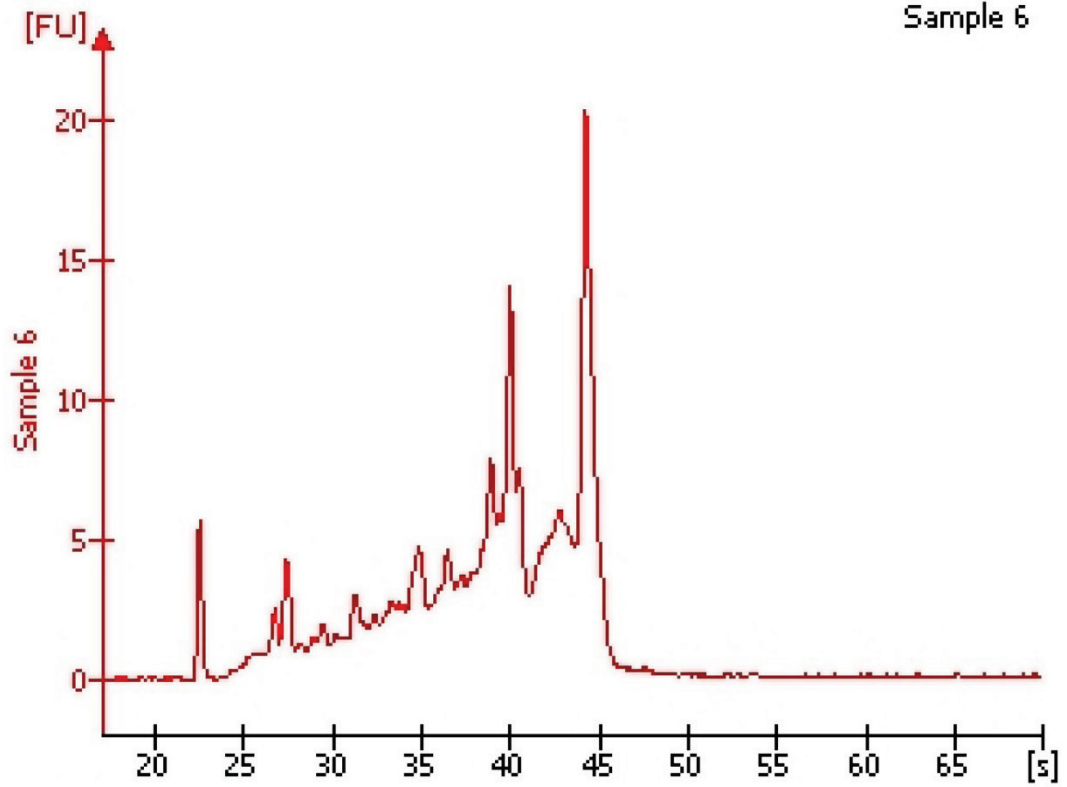
# Continuous ethylene - Poland - Rep 1



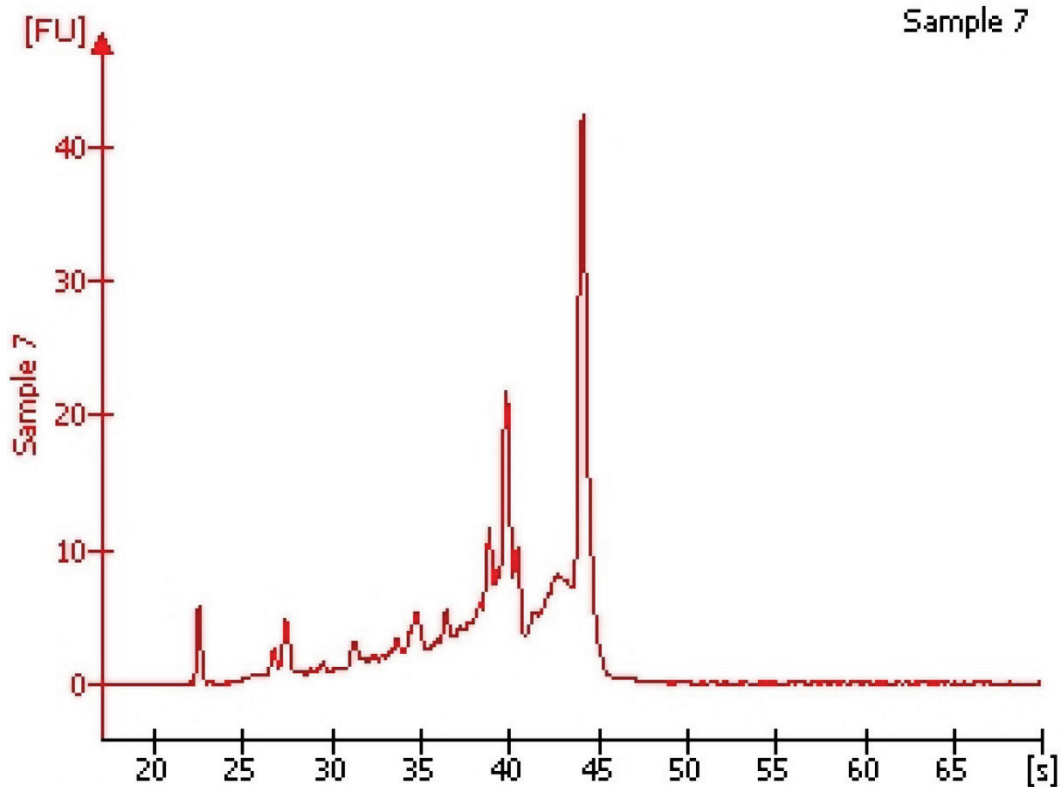


# Continuous ethylene - Poland - Rep 2

Sample 6



# Continuous ethylene - Poland - Rep 3



Sample 7

