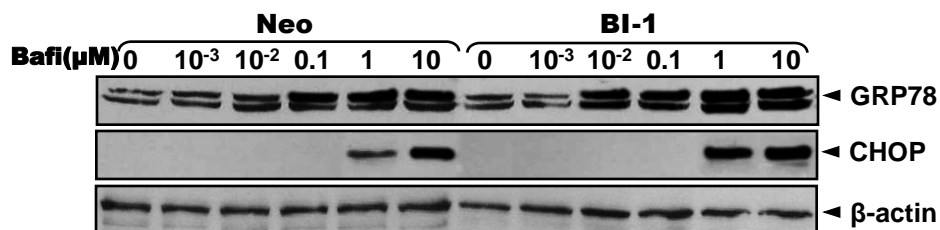


Supplementary Figure 5



Supplementary Figure 5. The bafilomycin-induced ER stress response was more active in BI-1 cells than in Neo cells. Neo and BI-1 cells were subjected to 0.001, 0.01, 0.1, 1, and 10 μM bafilomycin for 4 hours, and then western blotting was performed with anti-GRP78, CHOP, or β -actin antibody. Representative blots are shown.