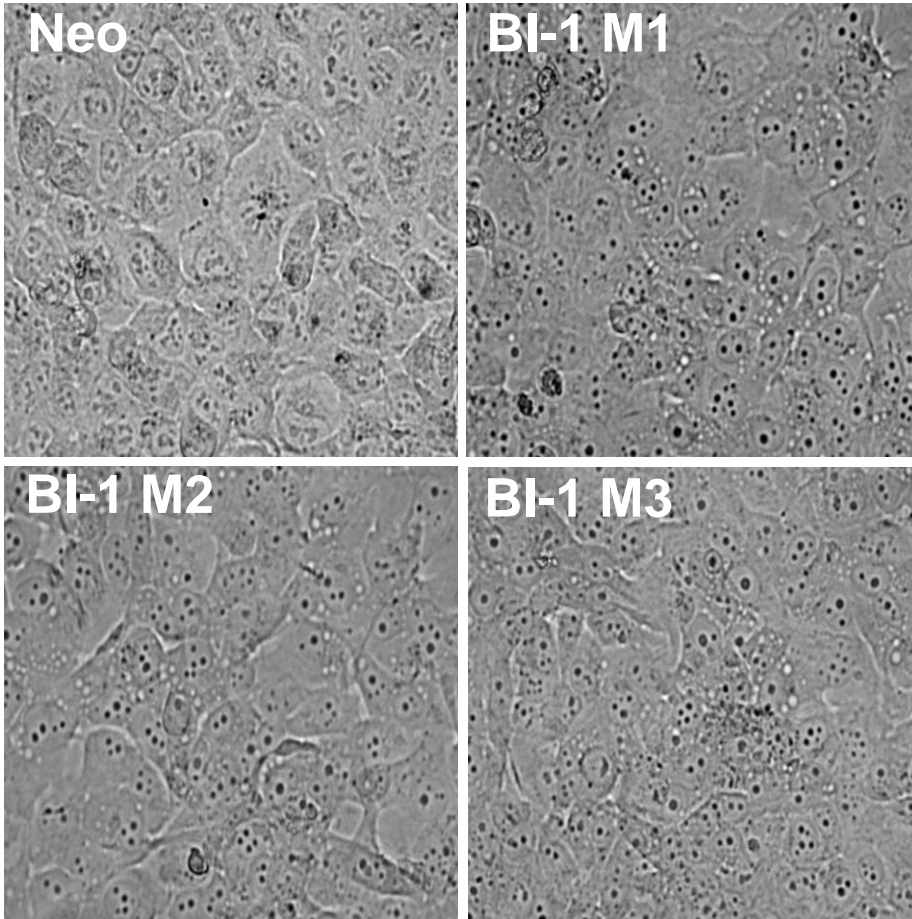
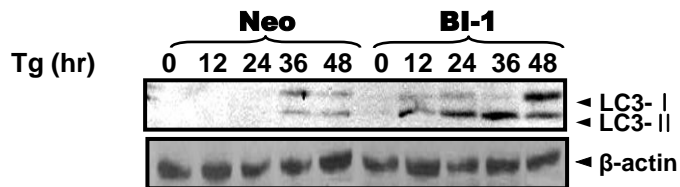


Supplementary Figure 7

A



B



Supplementary Figure 7. The expression of BI-1 induces autophagy formation. A picture of cell morphology was taken when Neo cells and various clones of BI-1 cells were cultured with thapsigargin for a period of 24 hours (X 200) (A). Neo and BI-1 cells (M1 cells) were treated with 5 μ M thapsigargin and then harvested after the indicated time periods (12, 24, 36, or 48 hours). Cell lysates were immunoblotted after SDS-PAGE with anti-LC3-I/II or β -actin antibody (B).