

Figure S1

Distribution of the four evolutionary classes across species. A genome is represented in a class if it has at least one copy of a gene in a cluster participating in that class.

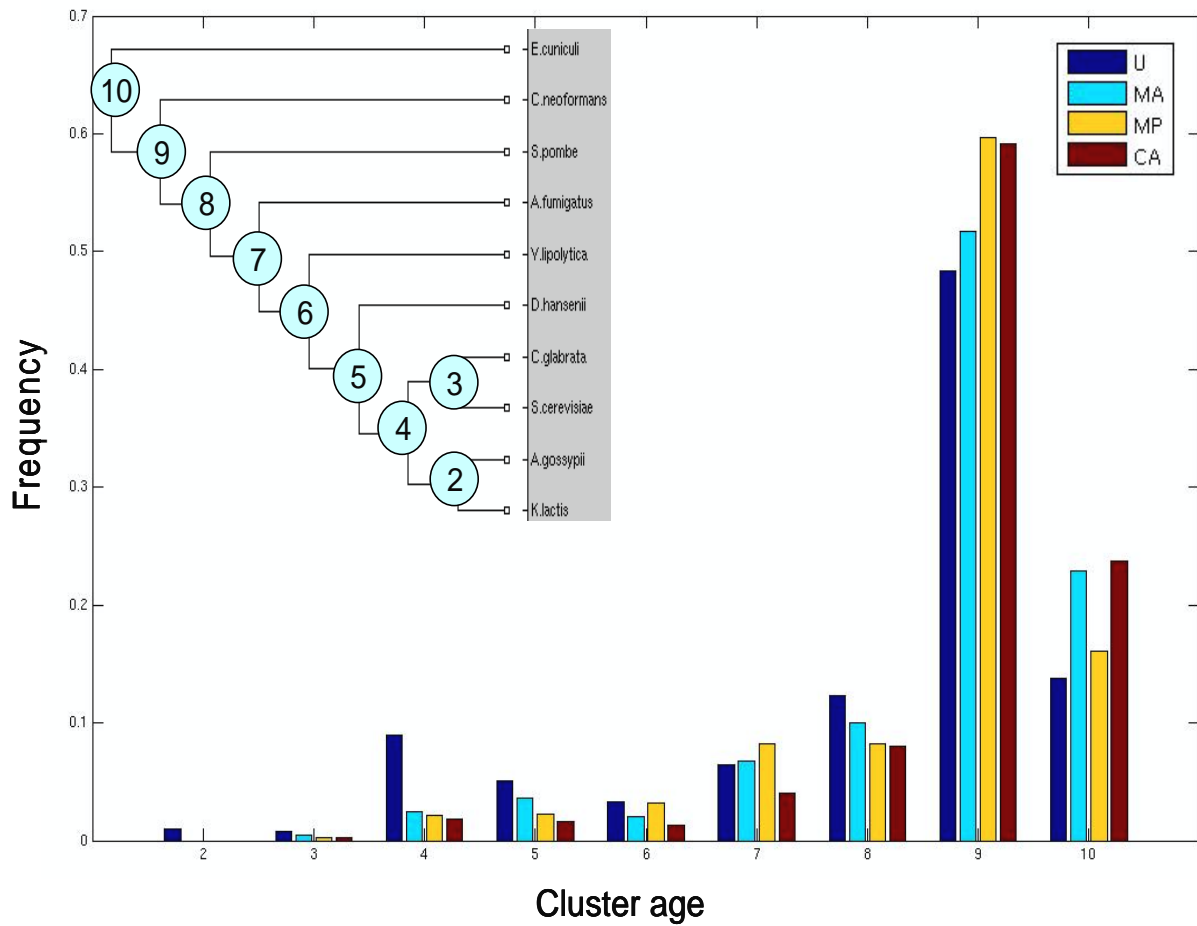


Figure S2

Distribution of the four evolutionary classes across cluster ages. Cluster age was defined according to the lowest common ancestor of its members and is represented by the number of the corresponding internal node on the phylogenetic tree. Accordingly, the root of the tree is represented by the age of 10.