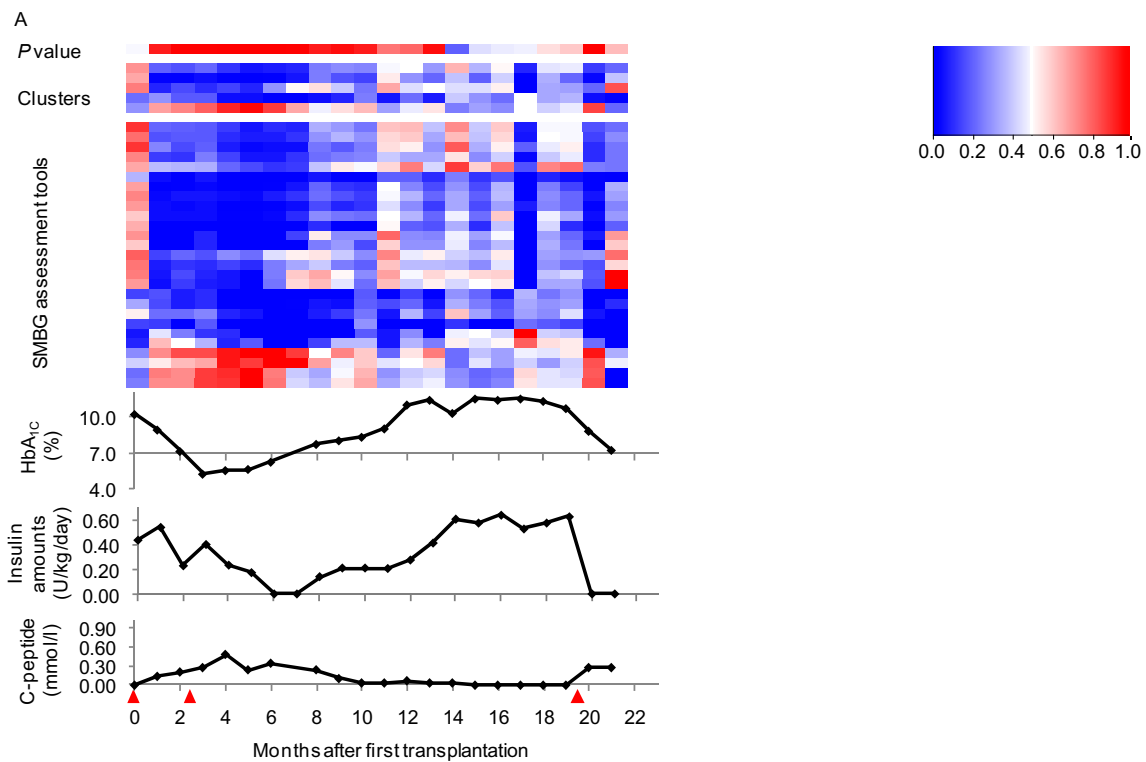
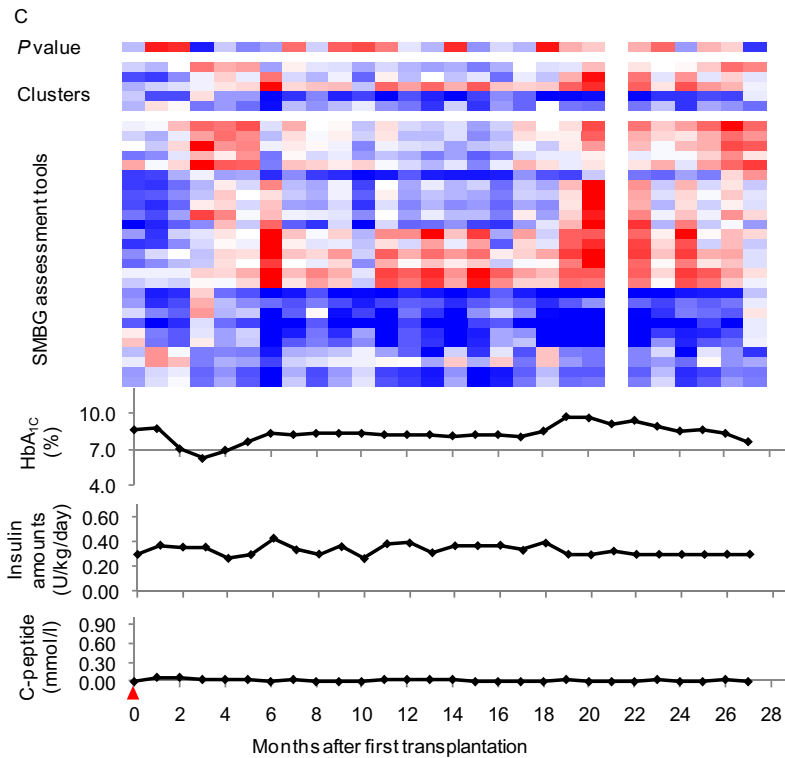
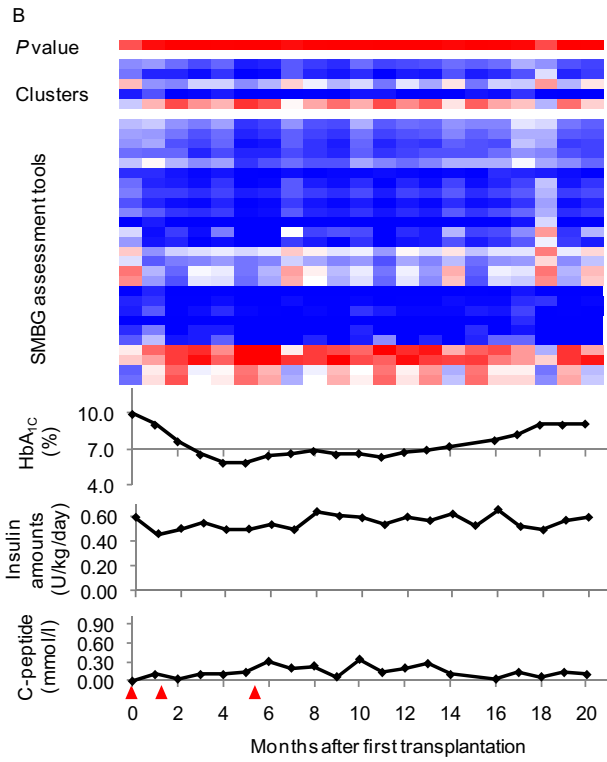


SUPPLEMENTARY DATA

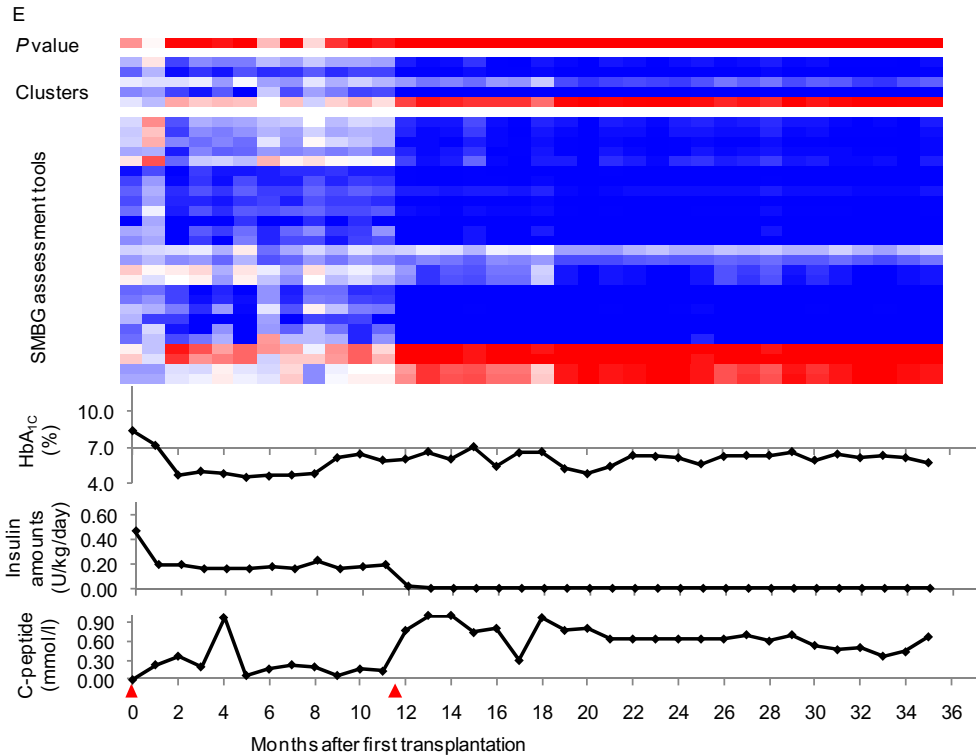
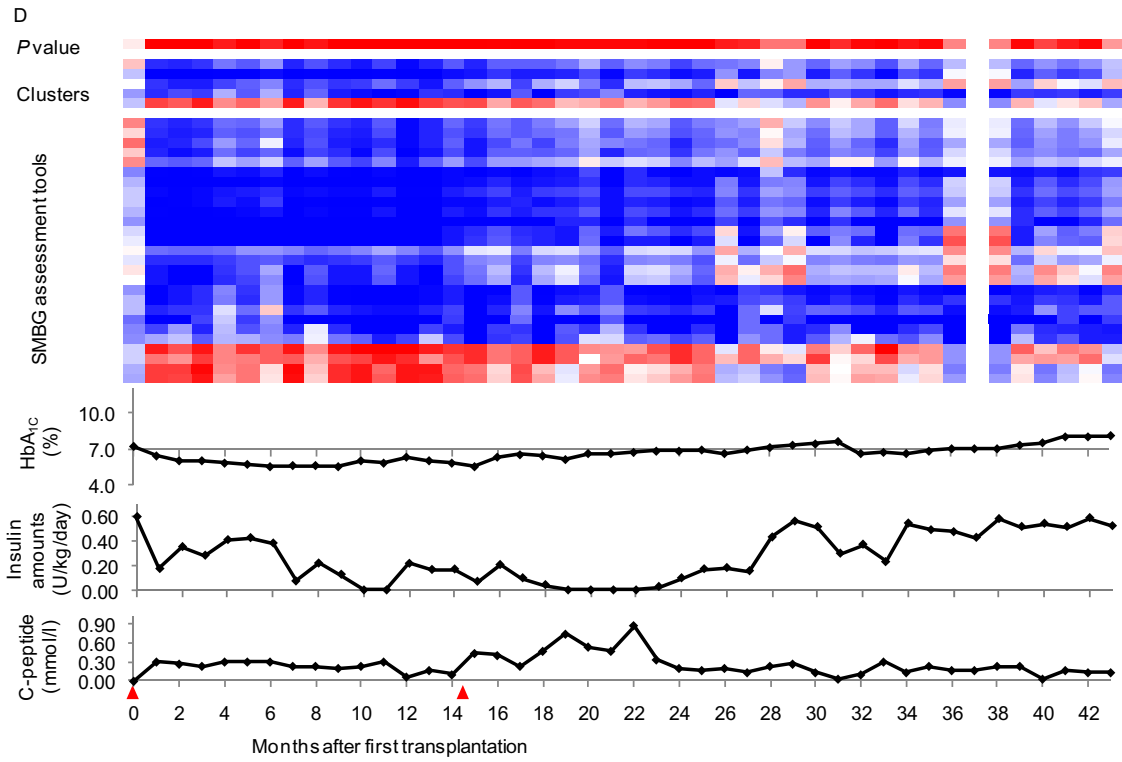
Supplementary Figure 1. *Clinical courses for each of the 11 islet recipients.* The heatmap indicates from the top row to the bottom row as follows: probability using the self-monitoring of blood glucose (SMBG) clusters for islet graft function (*P* value), the SMBG clusters (euglycemia, hypoglycemia, semihyperglycemia, hyperglycemia, and glucose fluctuation), and SMBG assessments. The red triangles show the timing of islet cell transplantation. The assessments were in the order shown in Figure 1, covering %Eu-Range A, B, and C, percentage of blood glucose between 70 and 140, 80 and 200, and 70 and 180 mg/dl; %Above A, B, C, and D, percentage of blood glucose above 140, 180, 200, and 250 mg/dl; %Below A and B, percentage of blood glucose below 80 and 50 mg/dl; LBGI and HBGI, low and high blood glucose index; ADRR, average daily risk range; Mean-, Hypo-, Eu- and Hyper-GRADE, the average of GRADE values and the percentage of hypoglycemia, euglycemia, and hyperglycemia in all GRADE values; IGC, the index of glycemic control; Hyper-GI and Hypo-GI, hyper- and hypoglycemia index; LI, lability index; MAGE, amplitude of glycemic excursions; M, M value; J, J index.



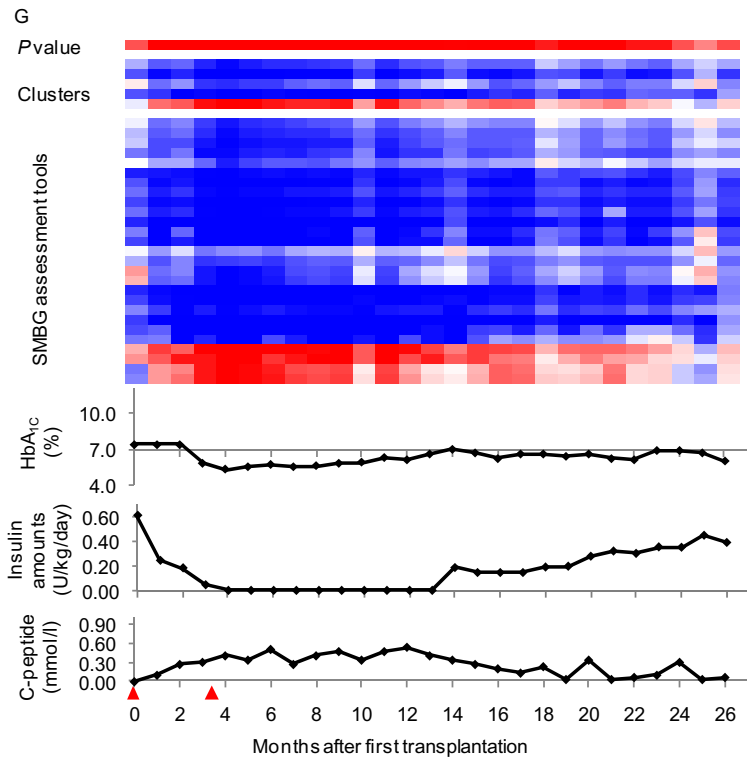
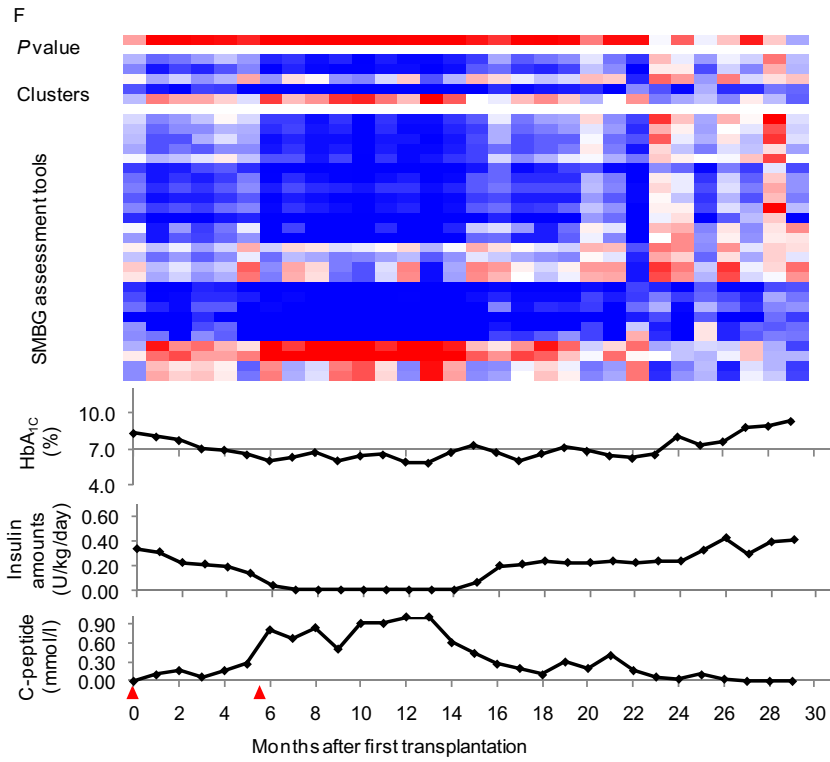
SUPPLEMENTARY DATA



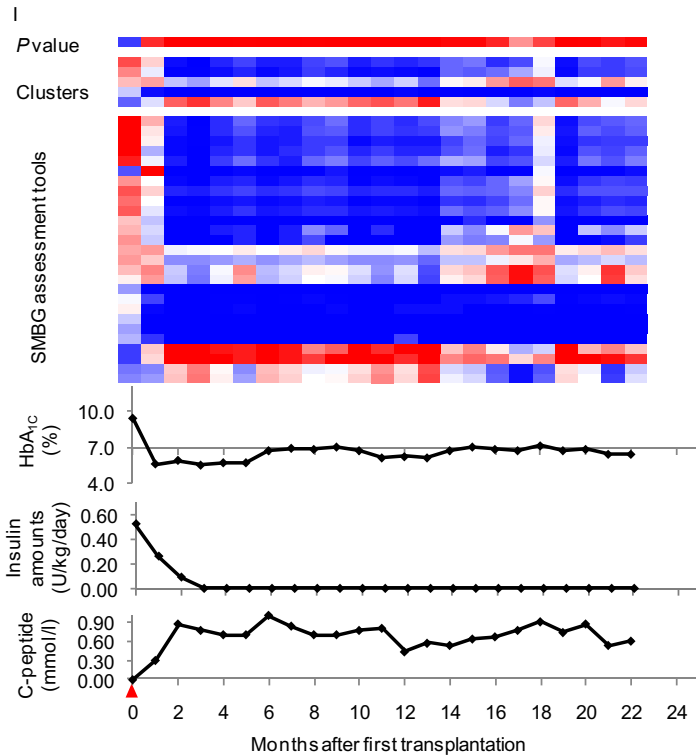
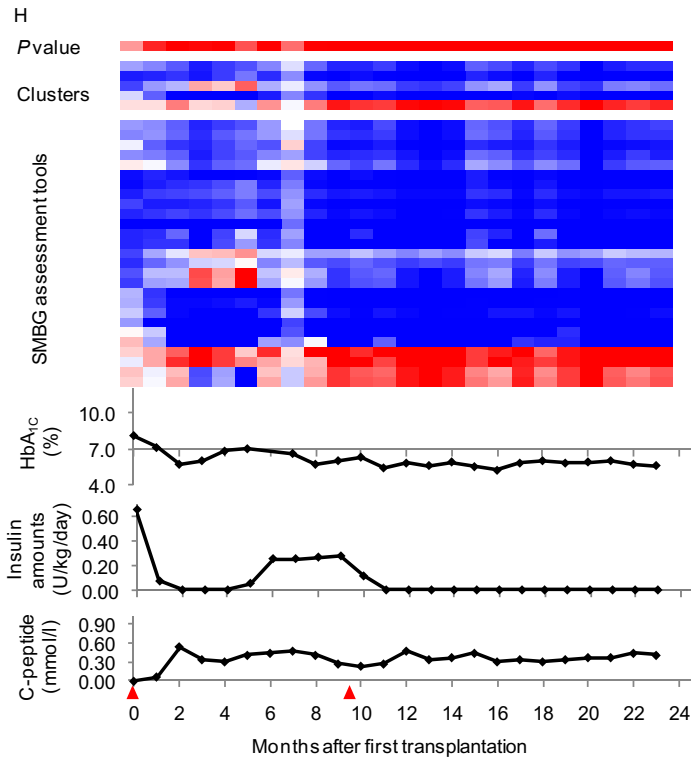
SUPPLEMENTARY DATA



SUPPLEMENTARY DATA



SUPPLEMENTARY DATA



SUPPLEMENTARY DATA

