

Legends for Supplemental Figures

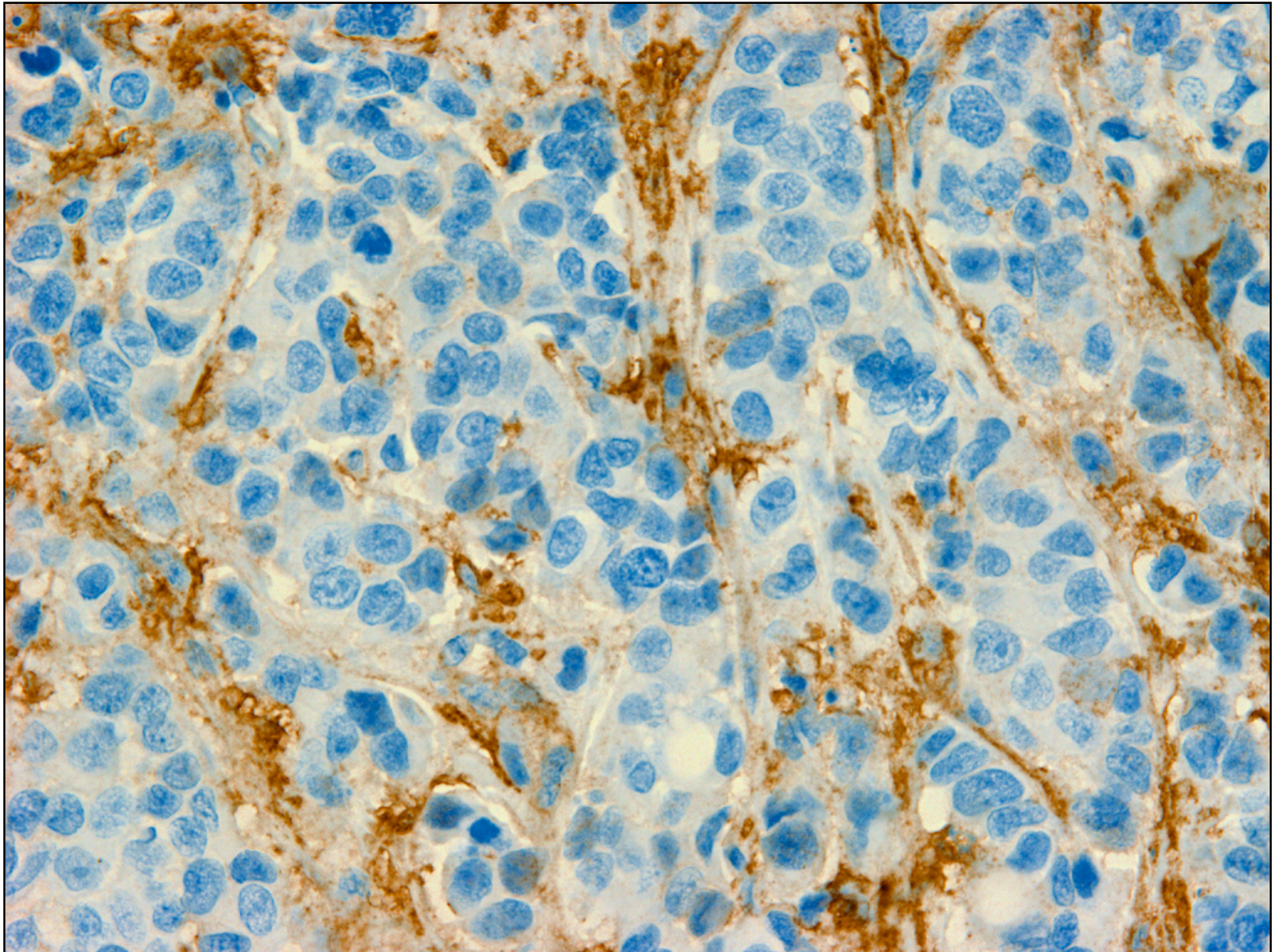
Supplemental Figure 1. MCT4 is Expressed in the Fibroblastic Stromal Compartment of Human Breast Cancers. Note that MCT4 staining is selectively localized to the tumor stromal compartment of human breast cancers. See also Figure 5. Original magnification, 40X.

Supplemental Figure 2. MCT1 is Expressed in the Epithelial Compartment of Human Breast Cancers. Note that MCT1 staining is present in the tumor epithelial cells, but is absent in the surrounding stroma. See also Figure 6. The original magnifications for panels A and B are 40X and 60X, respectively.

Suppl. Fig. 1

MCT4

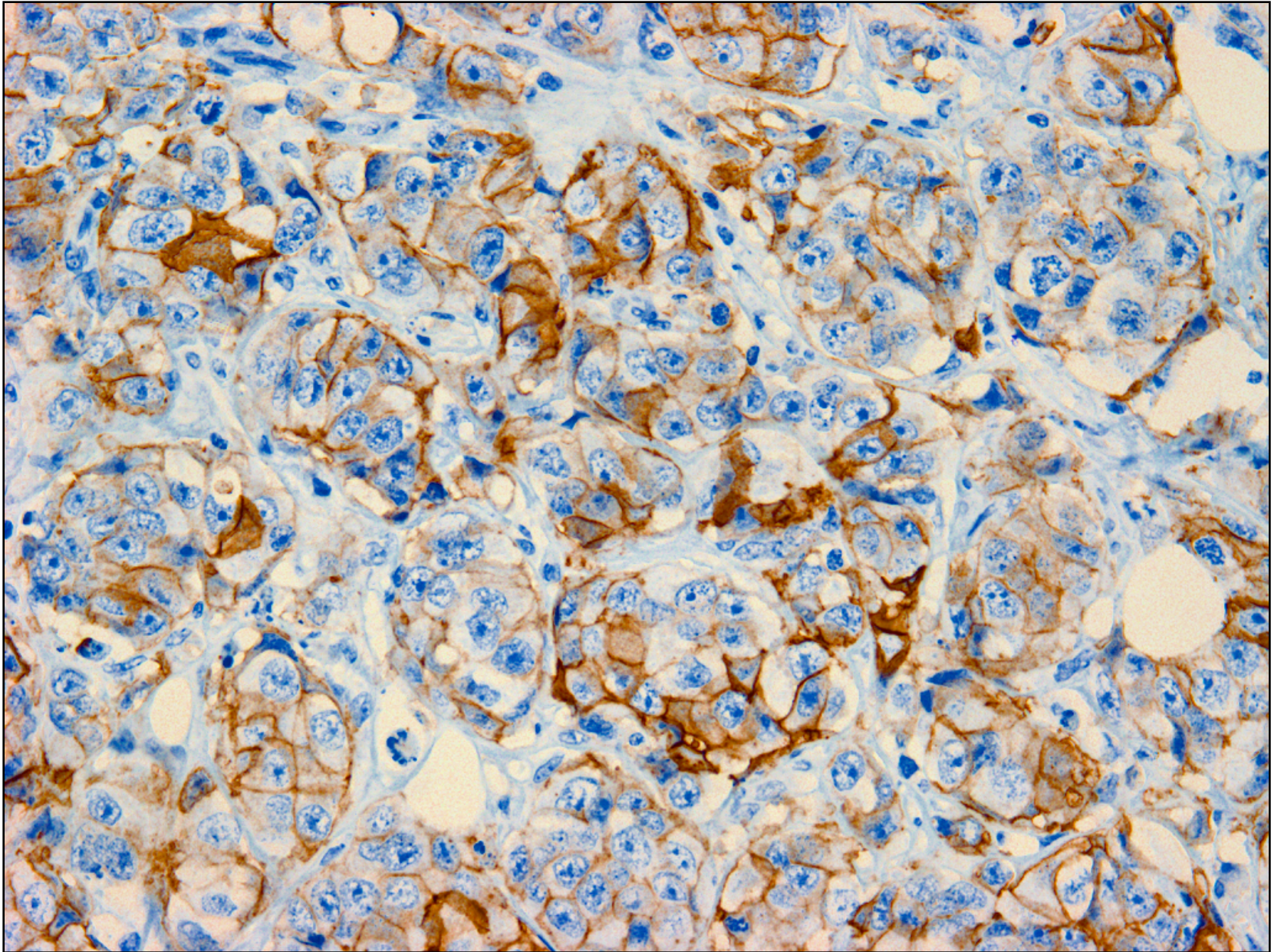
60X



Suppl. Fig. 2A

MCT1

40X



Suppl. Fig. 2B

MCT1

60X

