

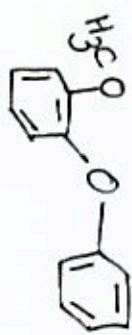


Chemical Shift (ppm)	Integration
155.2	1.00
154.8	1.00
154.4	1.00
128.6	1.00
128.2	1.00
127.8	1.00
127.4	1.00
127.0	1.00
126.6	1.00
126.2	1.00
125.8	1.00
125.4	1.00
125.0	1.00
124.6	1.00
124.2	1.00
123.8	1.00
123.4	1.00
123.0	1.00
122.6	1.00
122.2	1.00
121.8	1.00
121.4	1.00
121.0	1.00
120.6	1.00
120.2	1.00
119.8	1.00
119.4	1.00
119.0	1.00
118.6	1.00
118.2	1.00
117.8	1.00
117.4	1.00
117.0	1.00
116.6	1.00
116.2	1.00
115.8	1.00
115.4	1.00
115.0	1.00
114.6	1.00
114.2	1.00
113.8	1.00
113.4	1.00
113.0	1.00
112.6	1.00
112.2	1.00
111.8	1.00
111.4	1.00
111.0	1.00
110.6	1.00
110.2	1.00
109.8	1.00
109.4	1.00
109.0	1.00
108.6	1.00
108.2	1.00
107.8	1.00
107.4	1.00
107.0	1.00
106.6	1.00
106.2	1.00
105.8	1.00
105.4	1.00
105.0	1.00
104.6	1.00
104.2	1.00
103.8	1.00
103.4	1.00
103.0	1.00
102.6	1.00
102.2	1.00
101.8	1.00
101.4	1.00
101.0	1.00
100.6	1.00
100.2	1.00
99.8	1.00
99.4	1.00
99.0	1.00
98.6	1.00
98.2	1.00
97.8	1.00
97.4	1.00
97.0	1.00
96.6	1.00
96.2	1.00
95.8	1.00
95.4	1.00
95.0	1.00
94.6	1.00
94.2	1.00
93.8	1.00
93.4	1.00
93.0	1.00
92.6	1.00
92.2	1.00
91.8	1.00
91.4	1.00
91.0	1.00
90.6	1.00
90.2	1.00
89.8	1.00
89.4	1.00
89.0	1.00
88.6	1.00
88.2	1.00
87.8	1.00
87.4	1.00
87.0	1.00
86.6	1.00
86.2	1.00
85.8	1.00
85.4	1.00
85.0	1.00
84.6	1.00
84.2	1.00
83.8	1.00
83.4	1.00
83.0	1.00
82.6	1.00
82.2	1.00
81.8	1.00
81.4	1.00
81.0	1.00
80.6	1.00
80.2	1.00
79.8	1.00
79.4	1.00
79.0	1.00
78.6	1.00
78.2	1.00
77.8	1.00
77.4	1.00
77.0	1.00
76.6	1.00
76.2	1.00
75.8	1.00
75.4	1.00
75.0	1.00
74.6	1.00
74.2	1.00
73.8	1.00
73.4	1.00
73.0	1.00
72.6	1.00
72.2	1.00
71.8	1.00
71.4	1.00
71.0	1.00
70.6	1.00
70.2	1.00
69.8	1.00
69.4	1.00
69.0	1.00
68.6	1.00
68.2	1.00
67.8	1.00
67.4	1.00
67.0	1.00
66.6	1.00
66.2	1.00
65.8	1.00
65.4	1.00
65.0	1.00
64.6	1.00
64.2	1.00
63.8	1.00
63.4	1.00
63.0	1.00
62.6	1.00
62.2	1.00
61.8	1.00
61.4	1.00
61.0	1.00
60.6	1.00
60.2	1.00
59.8	1.00
59.4	1.00
59.0	1.00
58.6	1.00
58.2	1.00
57.8	1.00
57.4	1.00
57.0	1.00
56.6	1.00
56.2	1.00
55.8	1.00
55.4	1.00
55.0	1.00
54.6	1.00
54.2	1.00
53.8	1.00
53.4	1.00
53.0	1.00
52.6	1.00
52.2	1.00
51.8	1.00
51.4	1.00
51.0	1.00
50.6	1.00
50.2	1.00
49.8	1.00
49.4	1.00
49.0	1.00
48.6	1.00
48.2	1.00
47.8	1.00
47.4	1.00
47.0	1.00
46.6	1.00
46.2	1.00
45.8	1.00
45.4	1.00
45.0	1.00
44.6	1.00
44.2	1.00
43.8	1.00
43.4	1.00
43.0	1.00
42.6	1.00
42.2	1.00
41.8	1.00
41.4	1.00
41.0	1.00
40.6	1.00
40.2	1.00
39.8	1.00
39.4	1.00
39.0	1.00
38.6	1.00
38.2	1.00
37.8	1.00
37.4	1.00
37.0	1.00
36.6	1.00
36.2	1.00
35.8	1.00
35.4	1.00
35.0	1.00
34.6	1.00
34.2	1.00
33.8	1.00
33.4	1.00
33.0	1.00
32.6	1.00
32.2	1.00
31.8	1.00
31.4	1.00
31.0	1.00
30.6	1.00
30.2	1.00
29.8	1.00
29.4	1.00
29.0	1.00
28.6	1.00
28.2	1.00
27.8	1.00
27.4	1.00
27.0	1.00
26.6	1.00
26.2	1.00
25.8	1.00
25.4	1.00
25.0	1.00
24.6	1.00
24.2	1.00
23.8	1.00
23.4	1.00
23.0	1.00
22.6	1.00
22.2	1.00
21.8	1.00
21.4	1.00
21.0	1.00
20.6	1.00
20.2	1.00
19.8	1.00
19.4	1.00
19.0	1.00
18.6	1.00
18.2	1.00
17.8	1.00
17.4	1.00
17.0	1.00
16.6	1.00
16.2	1.00
15.8	1.00
15.4	1.00
15.0	1.00
14.6	1.00
14.2	1.00
13.8	1.00
13.4	1.00
13.0	1.00
12.6	1.00
12.2	1.00
11.8	1.00
11.4	1.00
11.0	1.00
10.6	1.00
10.2	1.00
9.8	1.00
9.4	1.00
9.0	1.00
8.6	1.00
8.2	1.00
7.8	1.00
7.4	1.00
7.0	1.00
6.6	1.00
6.2	1.00
5.8	1.00
5.4	1.00
5.0	1.00
4.6	1.00
4.2	1.00
3.8	1.00
3.4	1.00
3.0	1.00
2.6	1.00
2.2	1.00
1.8	1.00
1.4	1.00
1.0	1.00
0.6	1.00
0.2	1.00
-0.2	1.00
-0.6	1.00
-1.0	1.00
-1.4	1.00
-1.8	1.00
-2.2	1.00
-2.6	1.00
-3.0	1.00
-3.4	1.00
-3.8	1.00
-4.2	1.00
-4.6	1.00
-5.0	1.00
-5.4	1.00
-5.8	1.00
-6.2	1.00
-6.6	1.00
-7.0	1.00
-7.4	1.00
-7.8	1.00
-8.2	1.00
-8.6	1.00
-9.0	1.00
-9.4	1.00
-9.8	1.00
-10.2	1.00
-10.6	1.00
-11.0	1.00
-11.4	1.00
-11.8	1.00
-12.2	1.00
-12.6	1.00
-13.0	1.00
-13.4	1.00
-13.8	1.00
-14.2	1.00
-14.6	1.00
-15.0	1.00
-15.4	1.00
-15.8	1.00
-16.2	1.00
-16.6	1.00
-17.0	1.00
-17.4	1.00
-17.8	1.00
-18.2	1.00
-18.6	1.00
-19.0	1.00
-19.4	1.00
-19.8	1.00
-20.2	1.00



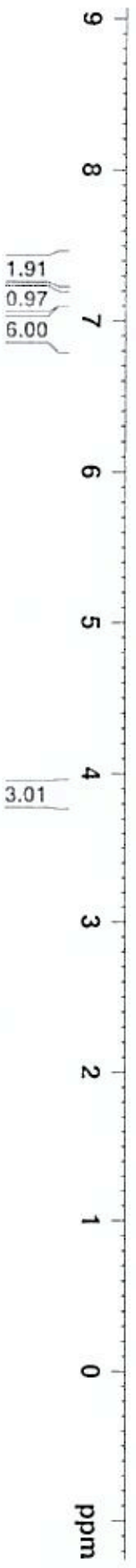


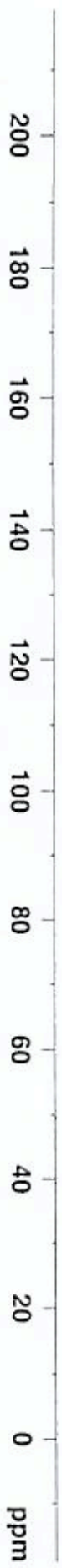
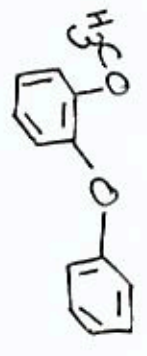
Handwritten 's' and 'f' marks.

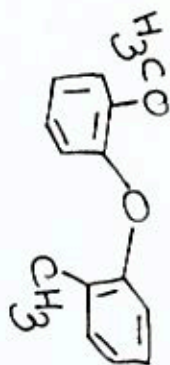
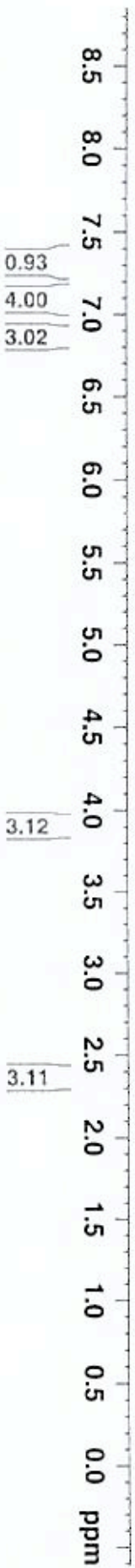


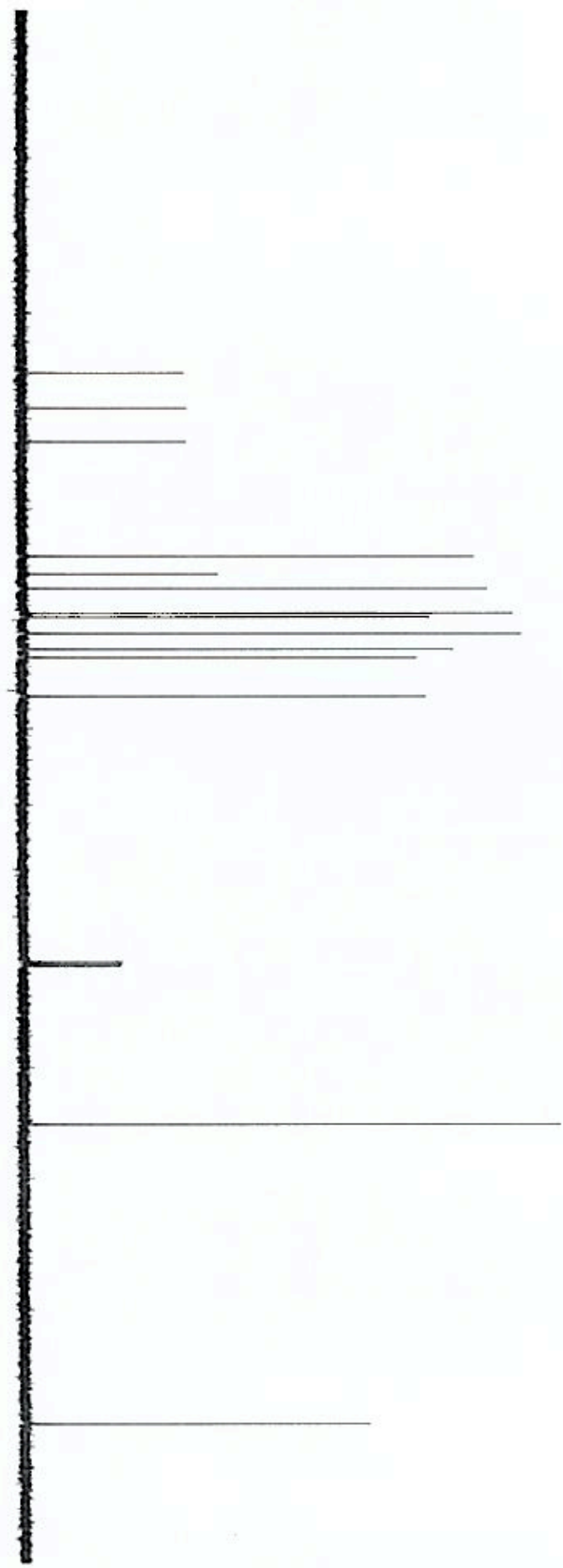
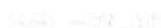
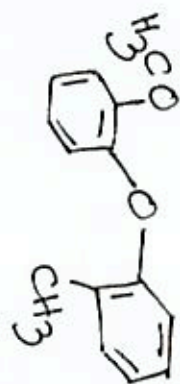
Handwritten 's' mark.

Handwritten '1' mark.

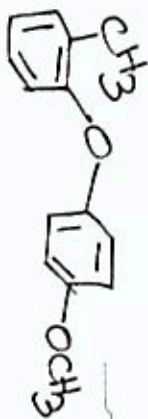


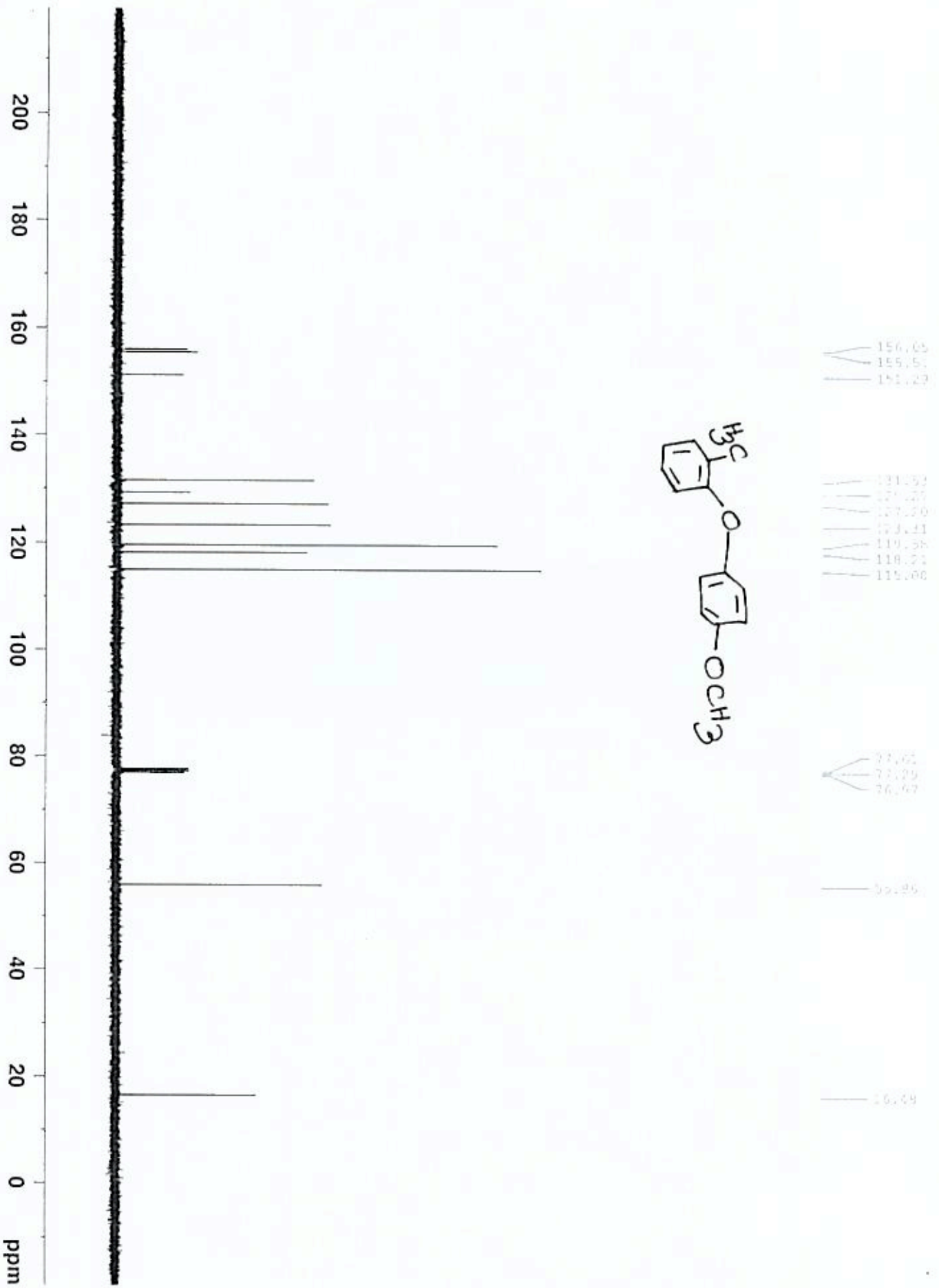


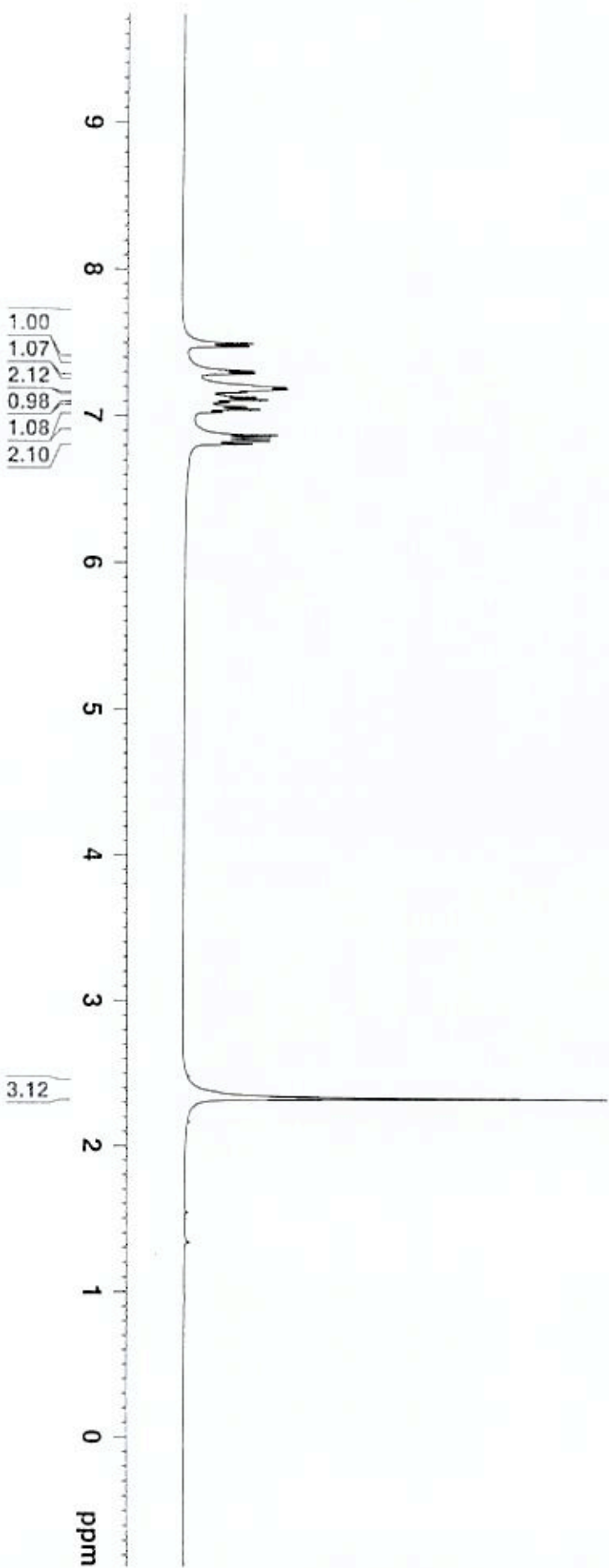
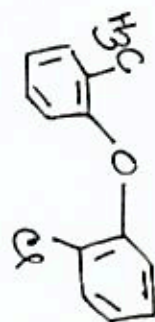




1H-dc1f parameter set



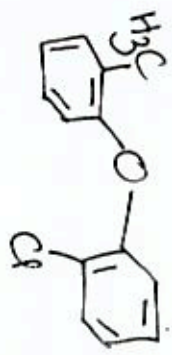
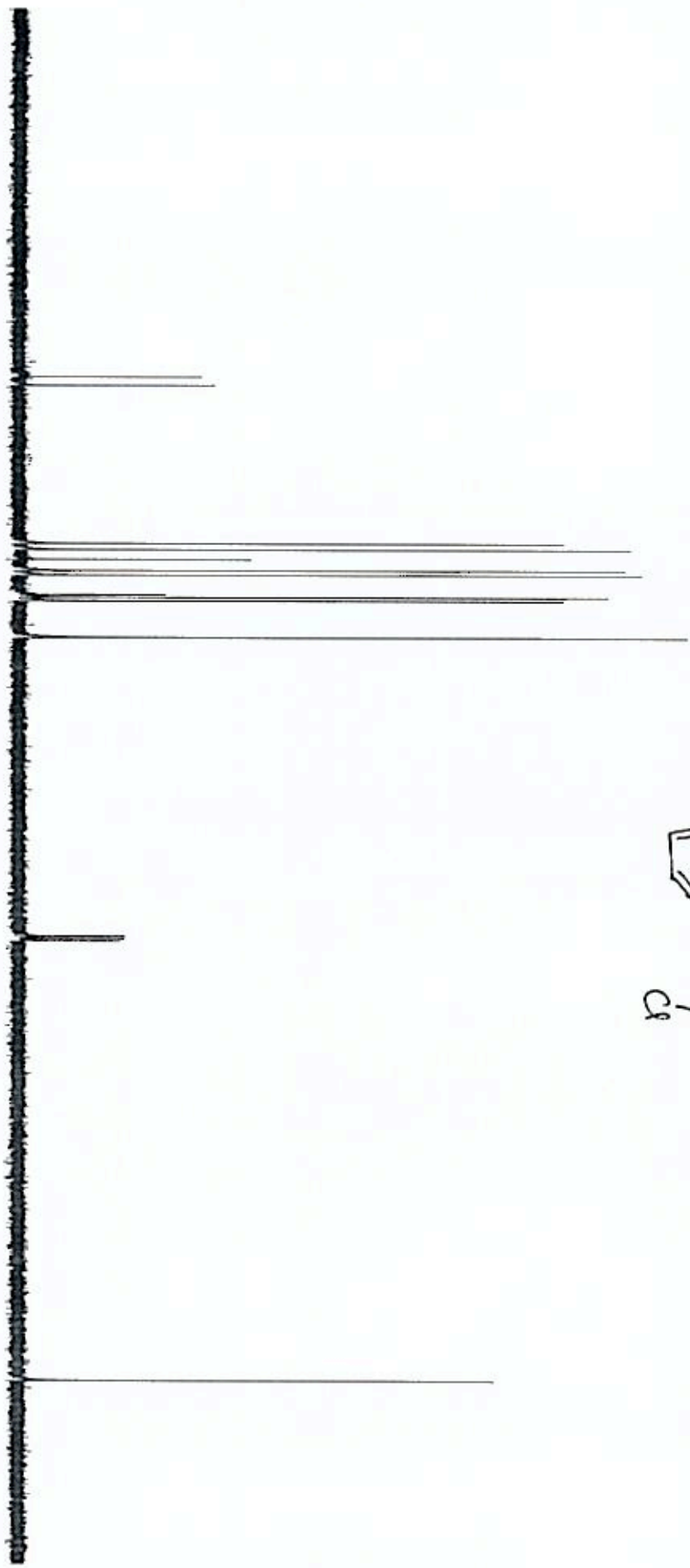


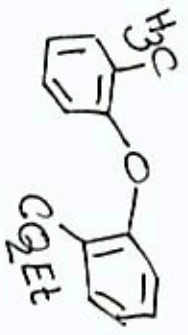


1.80

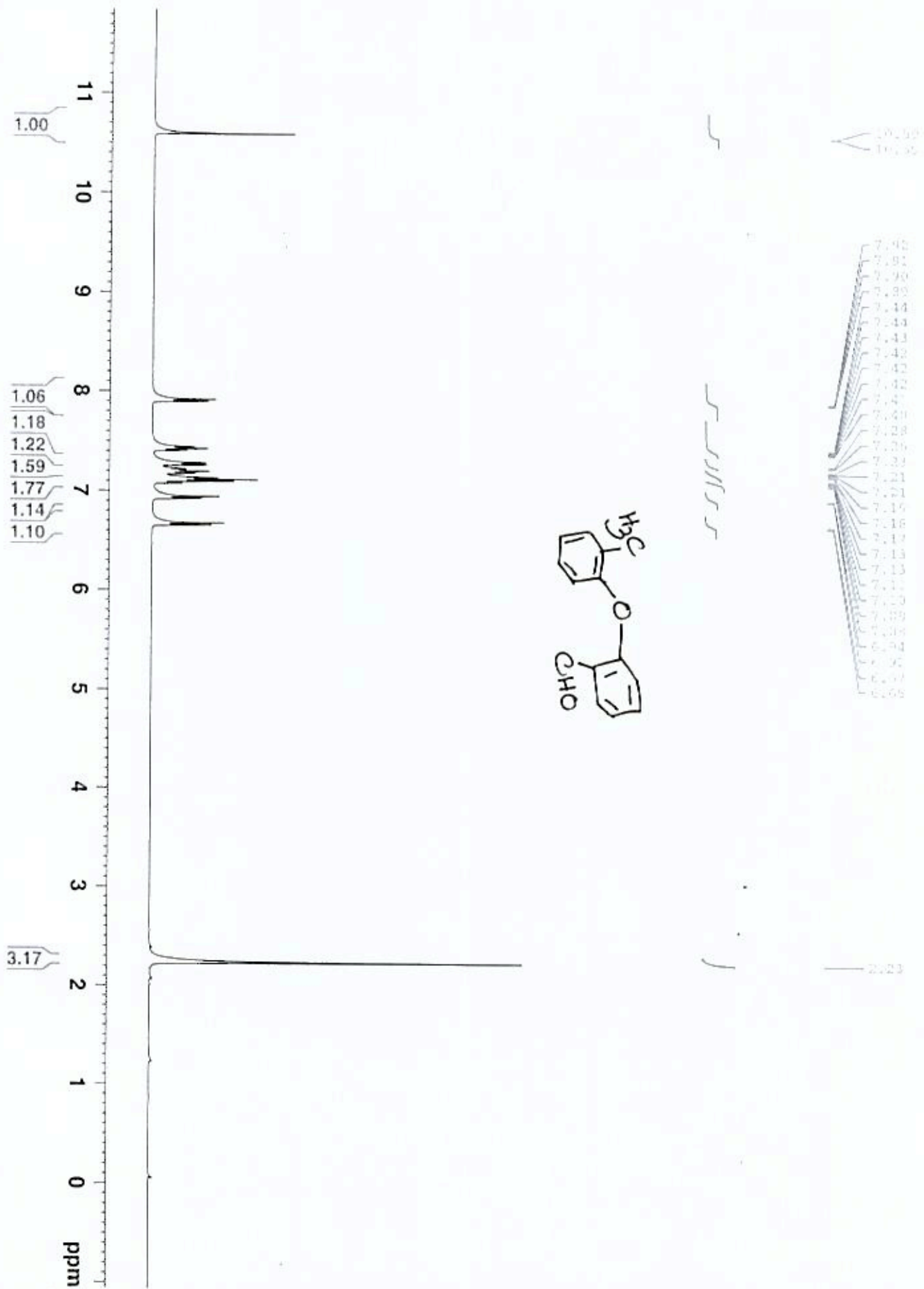


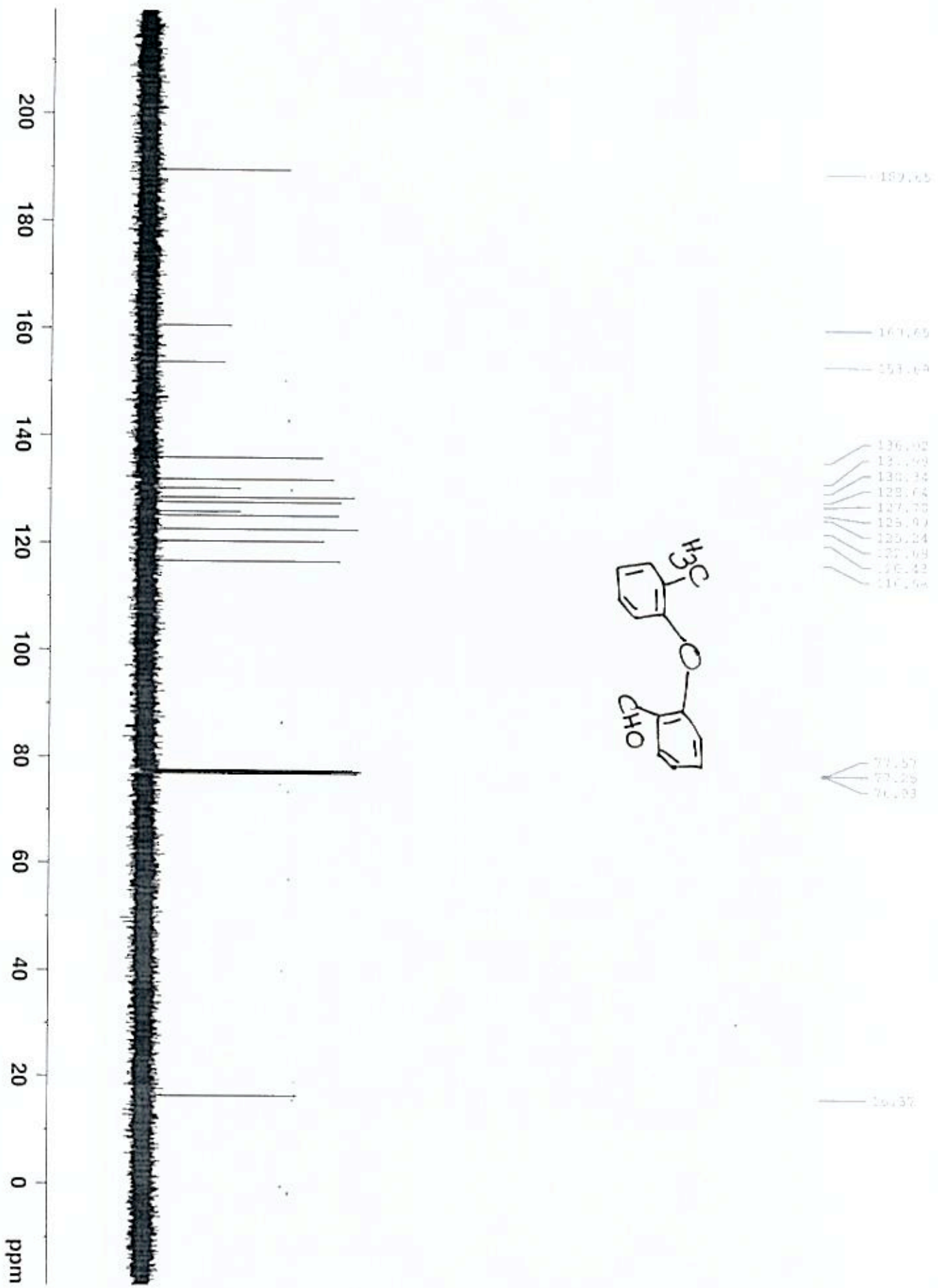
200 190 180 170 160 150 140 130 120 110 100 90 80 70 60 50 40 30 20 10 ppm

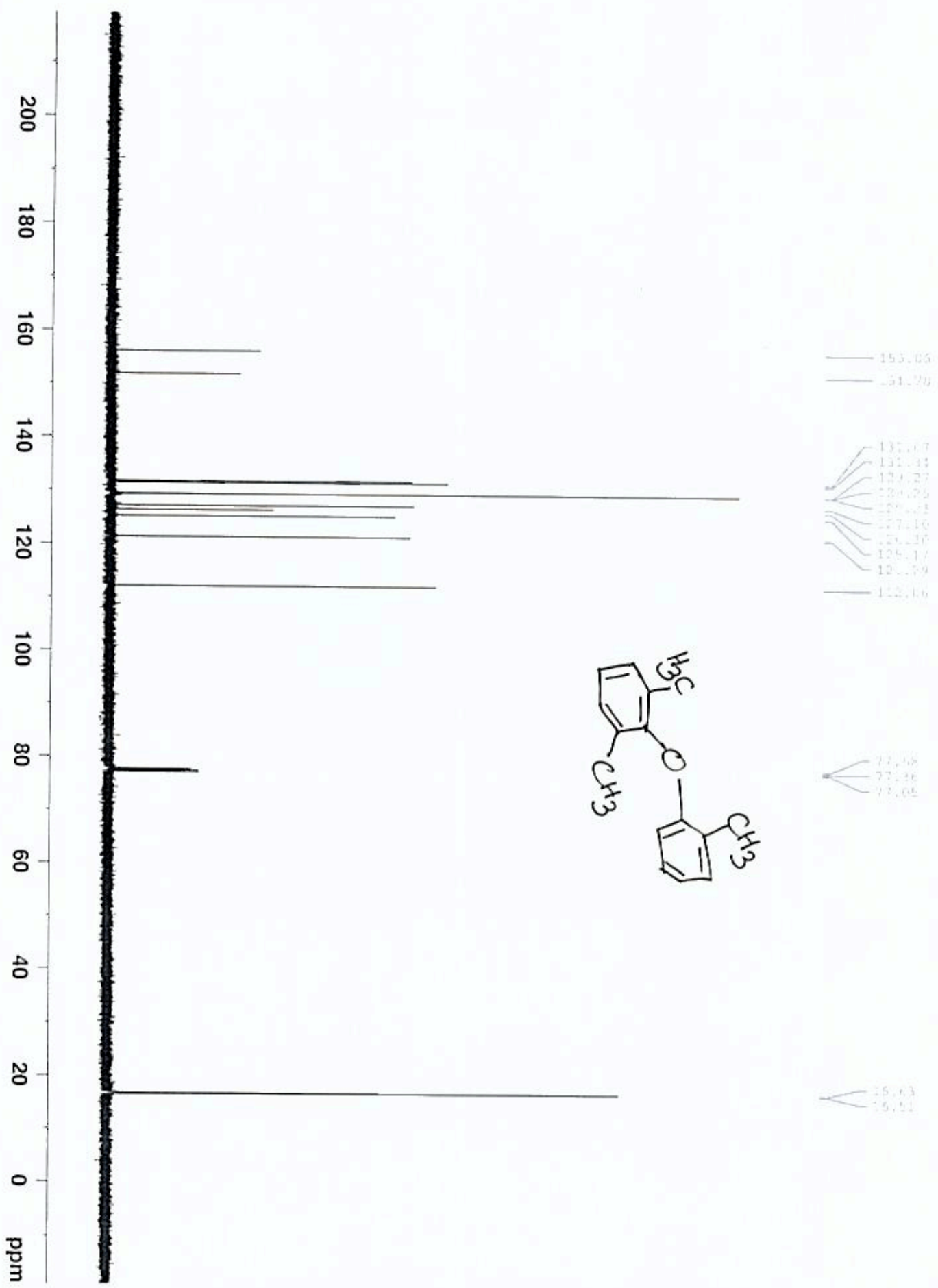


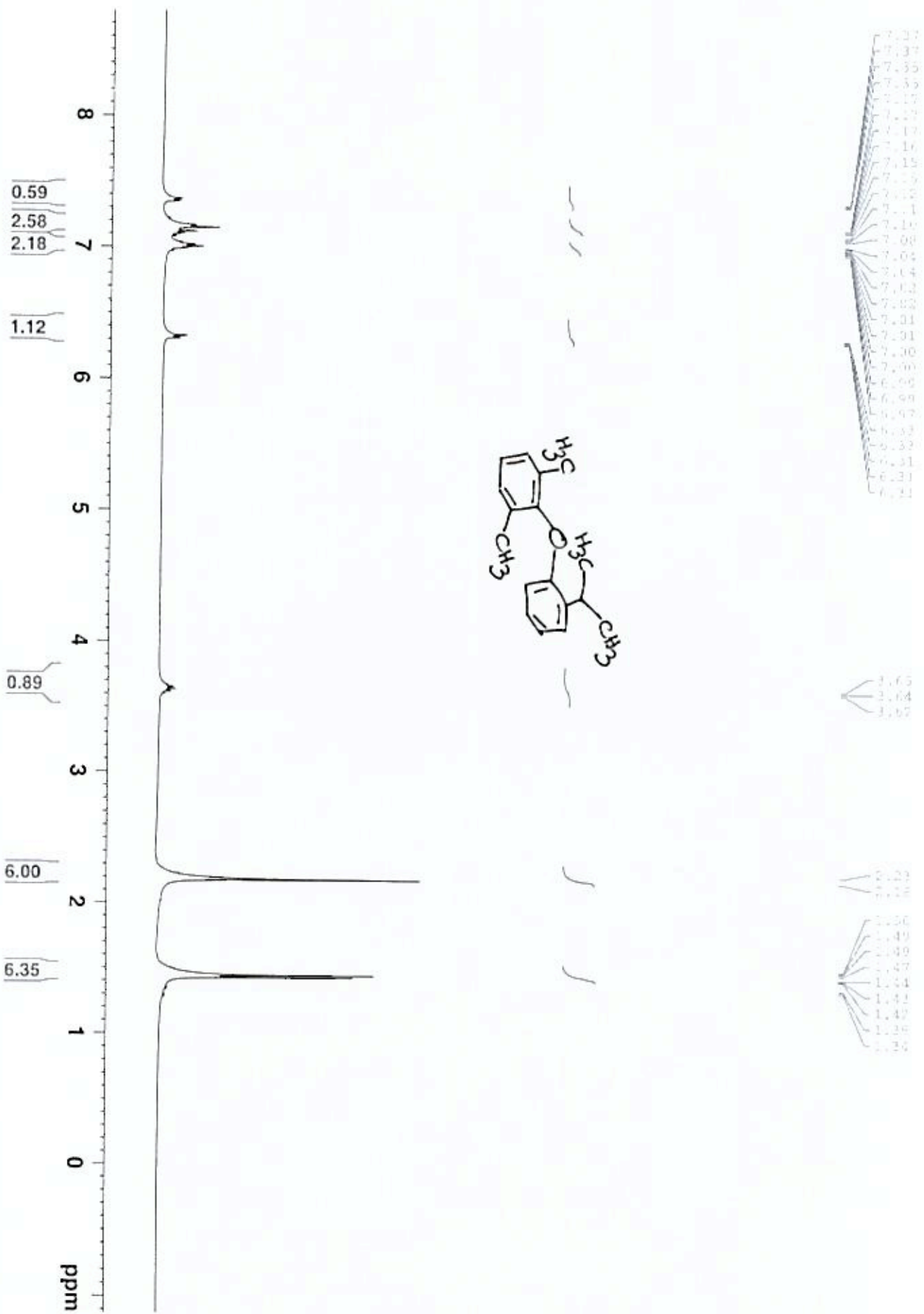


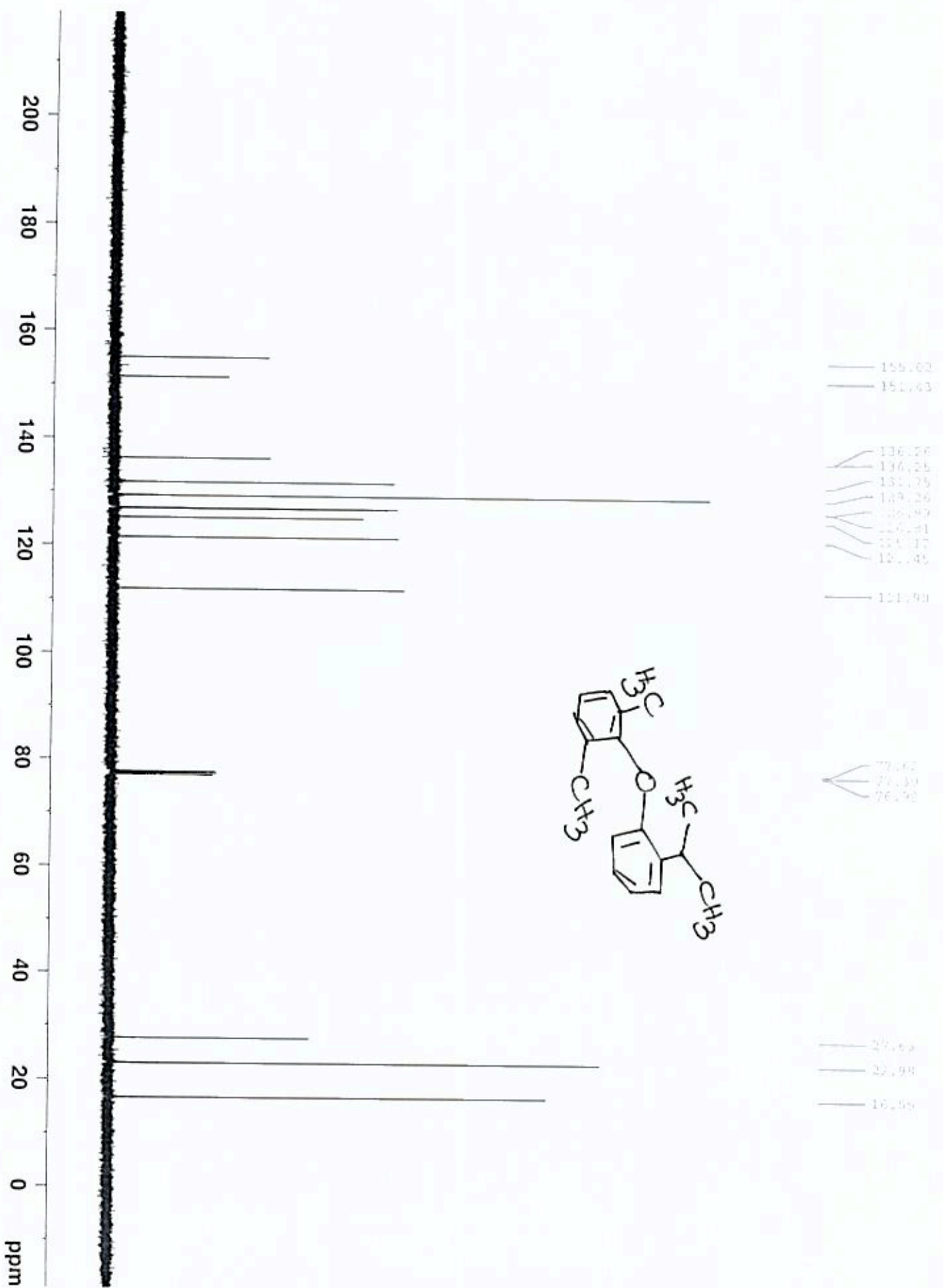


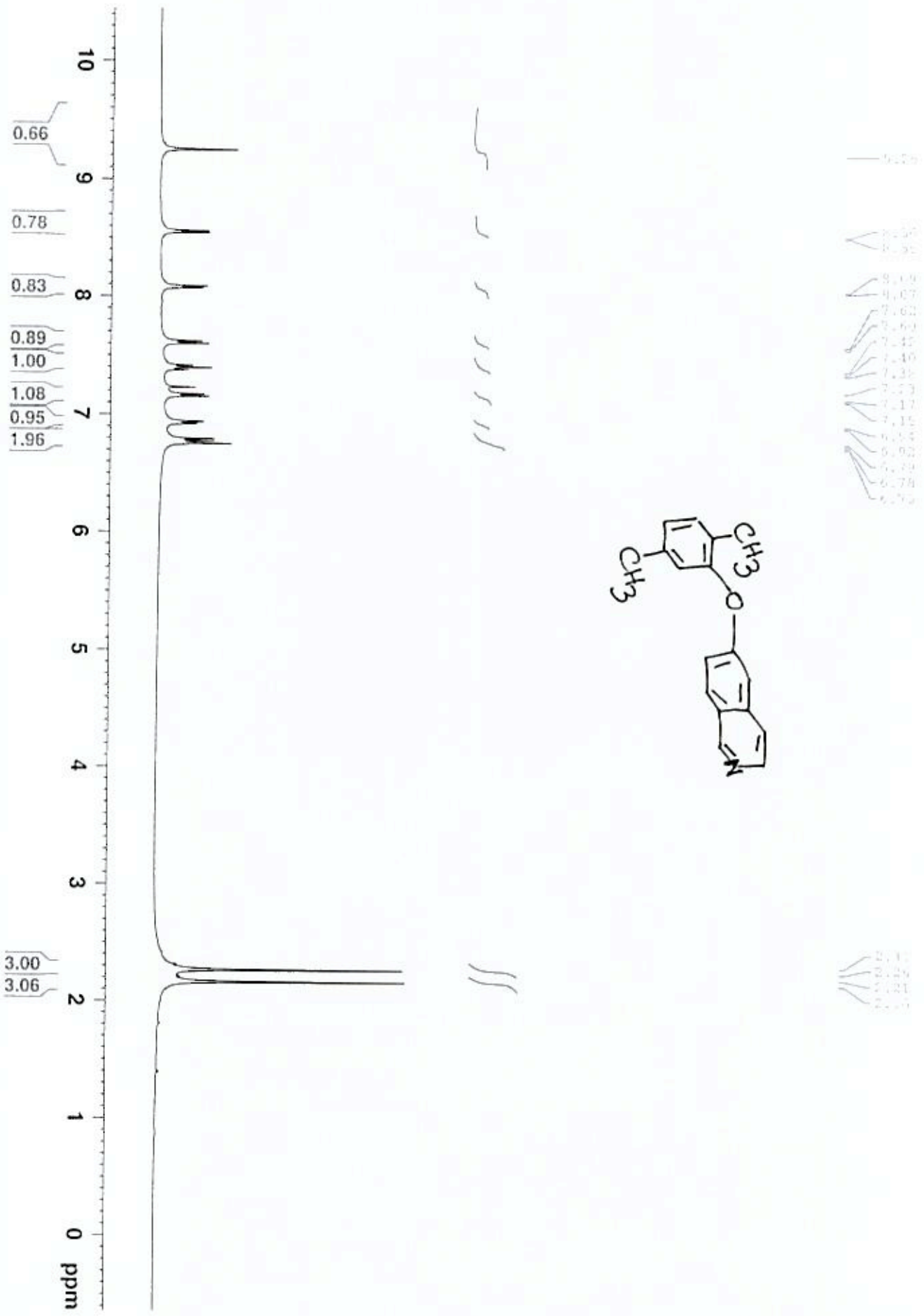


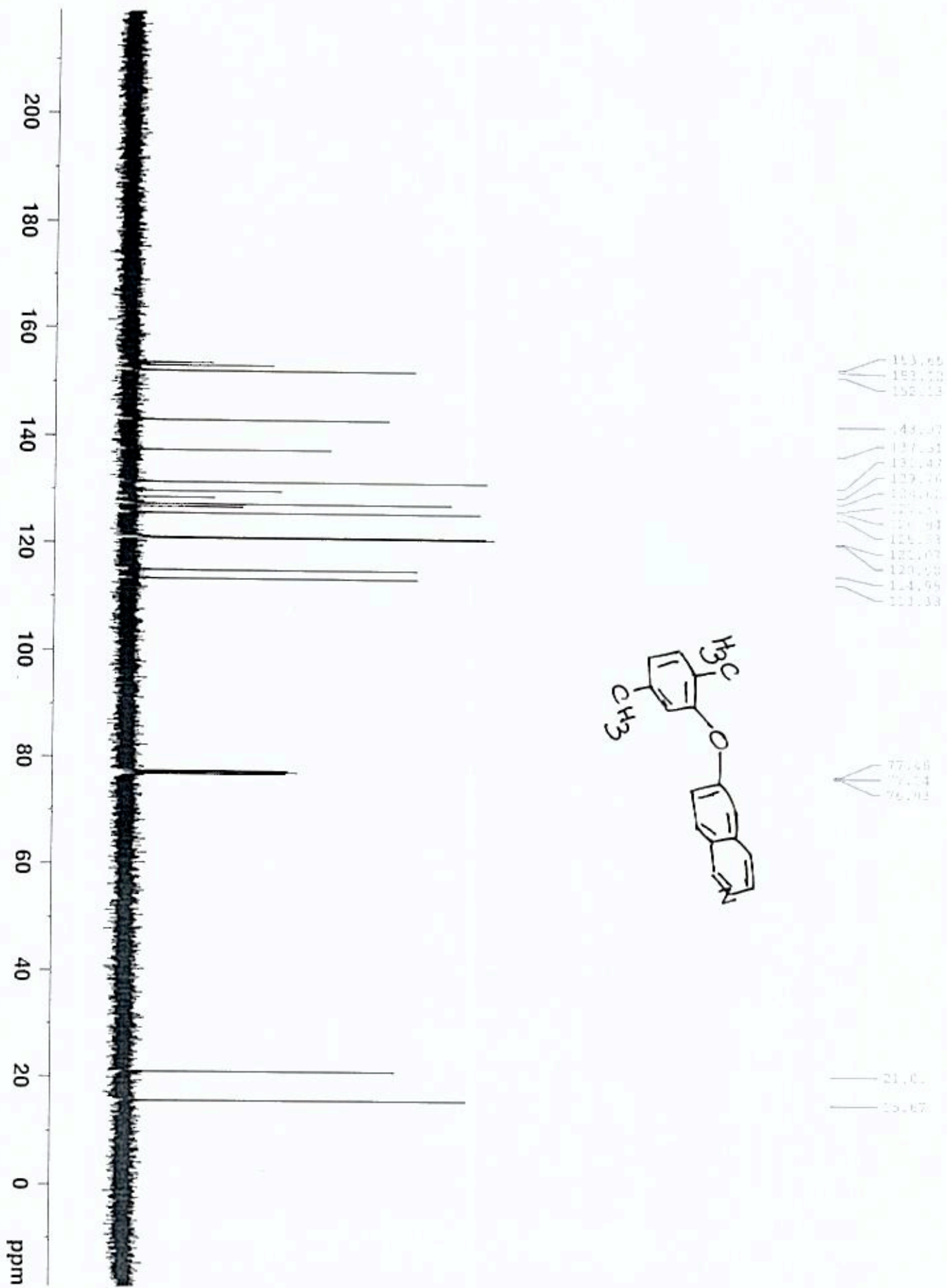


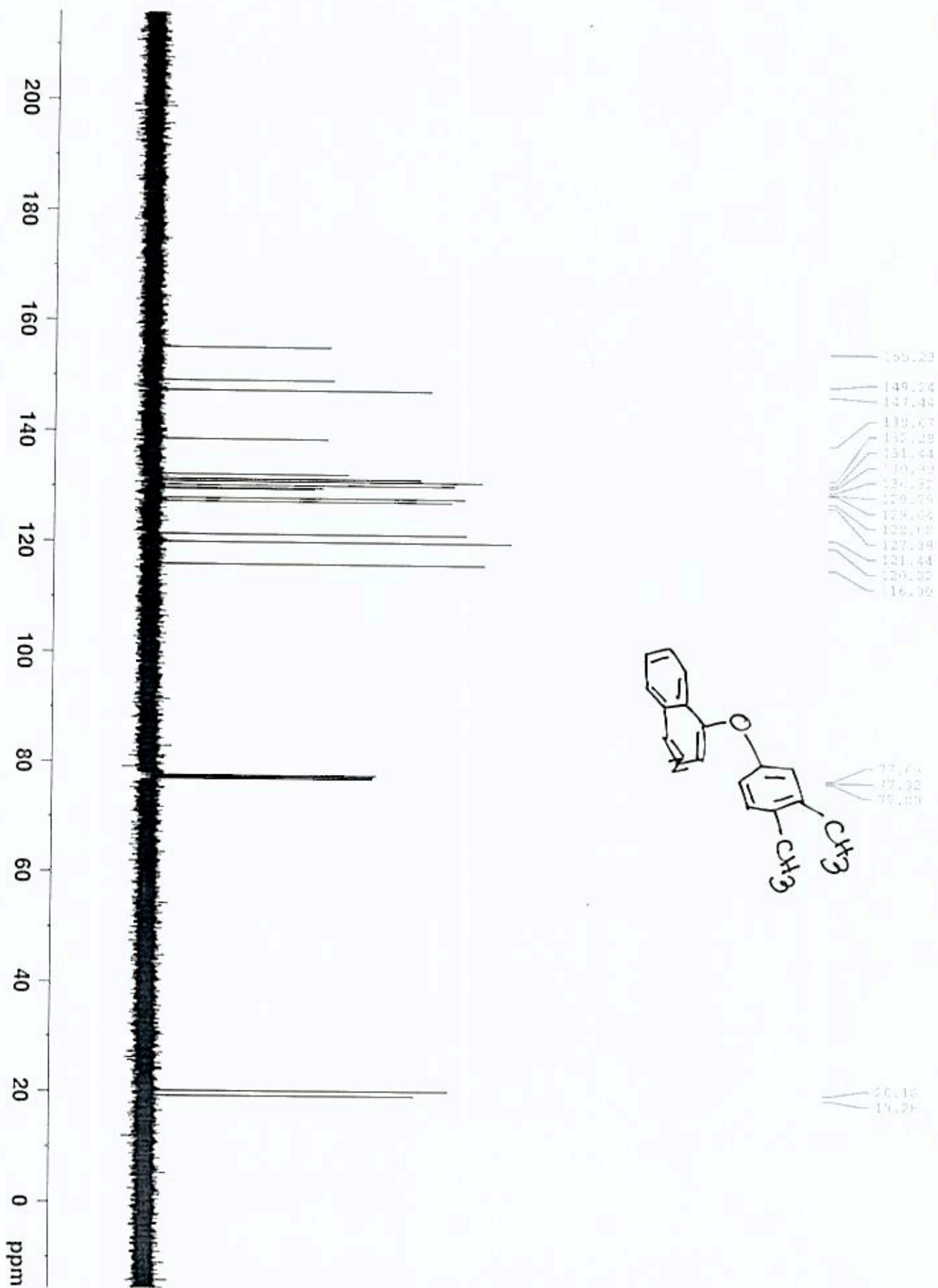


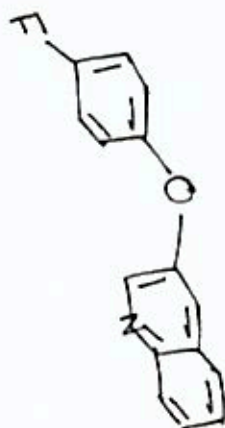




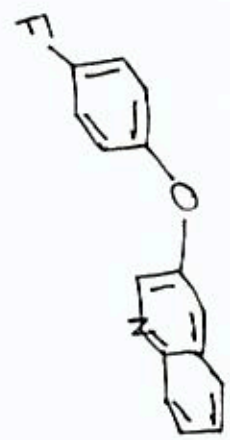
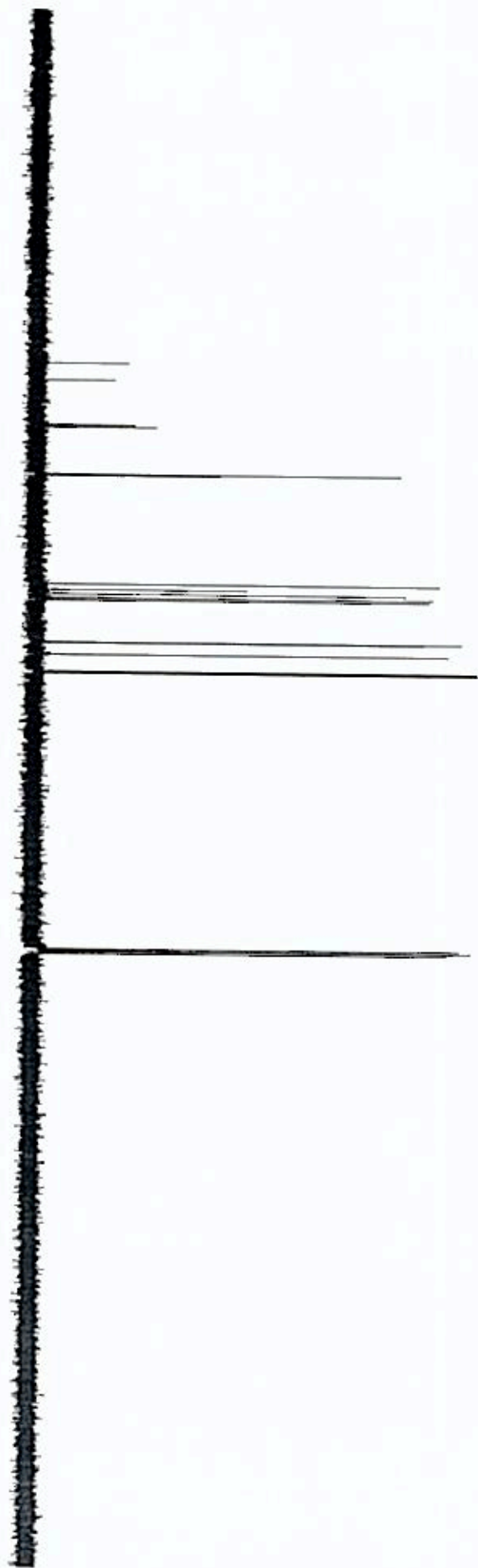




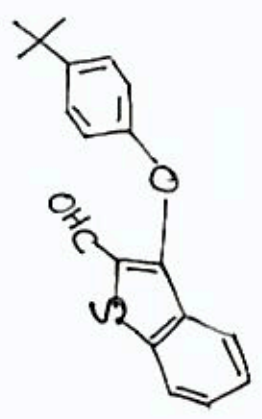
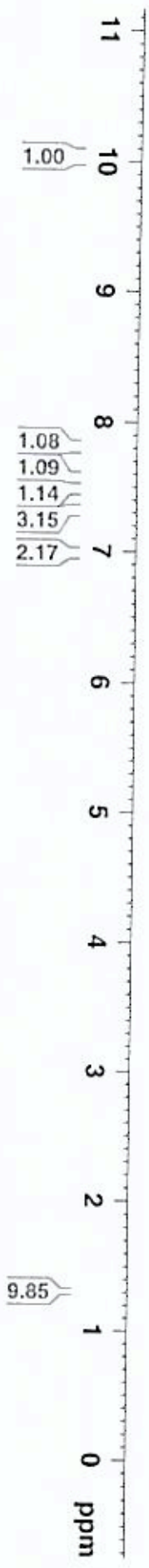


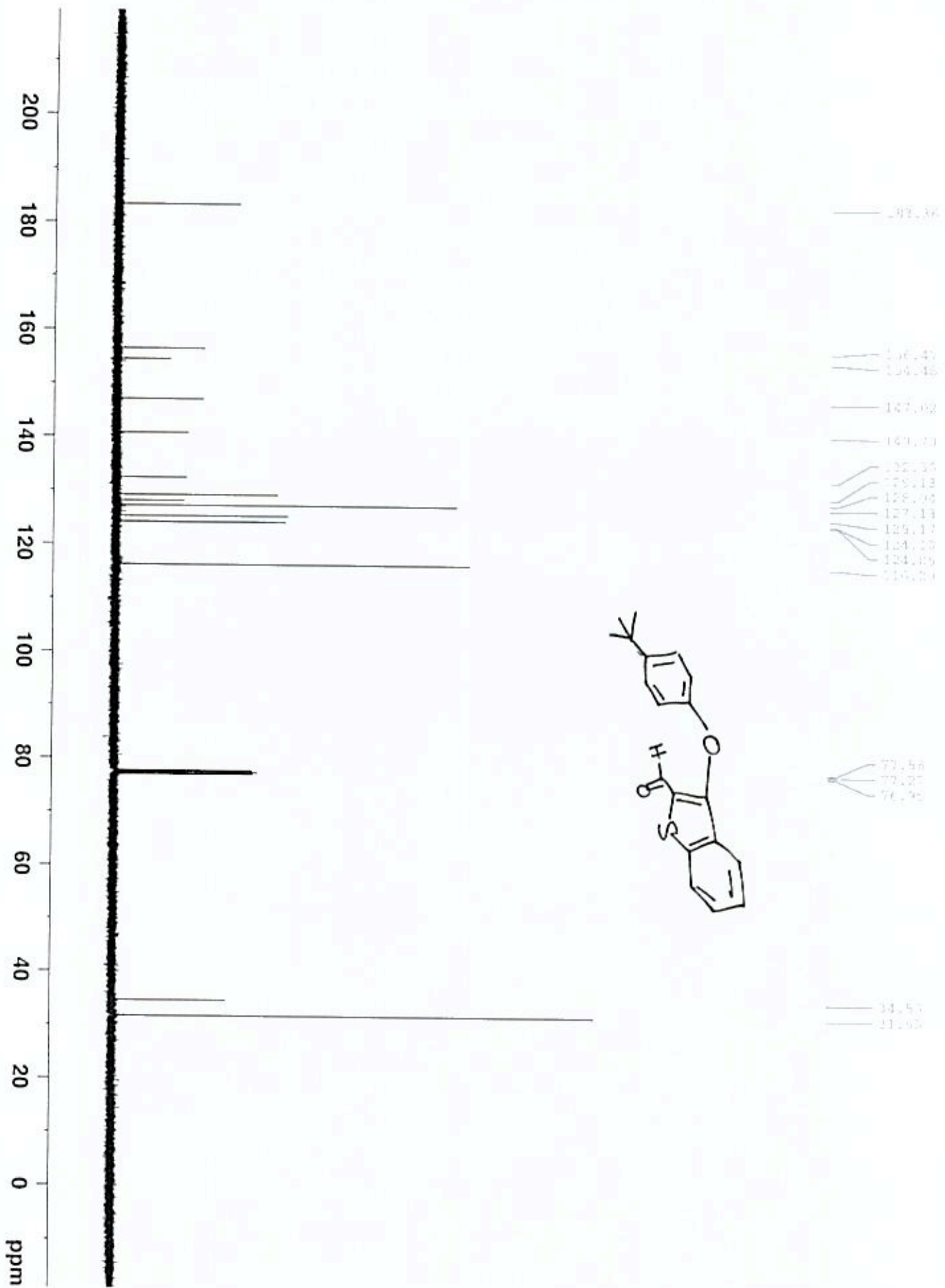


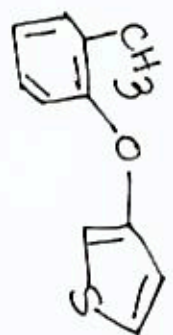
200 190 180 170 160 150 140 130 120 110 100 90 80 70 60 50 40 30 20 10 ppm



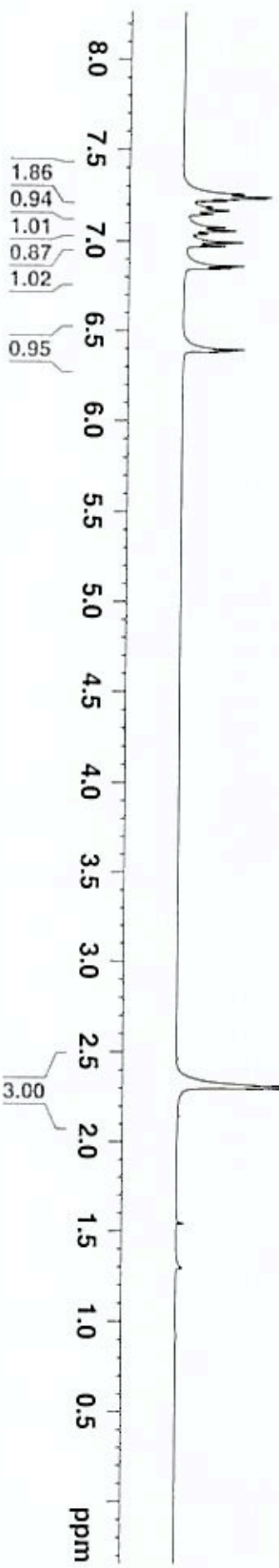
156.79	158.27	151.63	151.79	149.36	148.94	129.47	129.68	129.09	127.54	127.12	121.25	121.17	119.51	117.09	116.26	77.26	77.26	77.21
--------	--------	--------	--------	--------	--------	--------	--------	--------	--------	--------	--------	--------	--------	--------	--------	-------	-------	-------

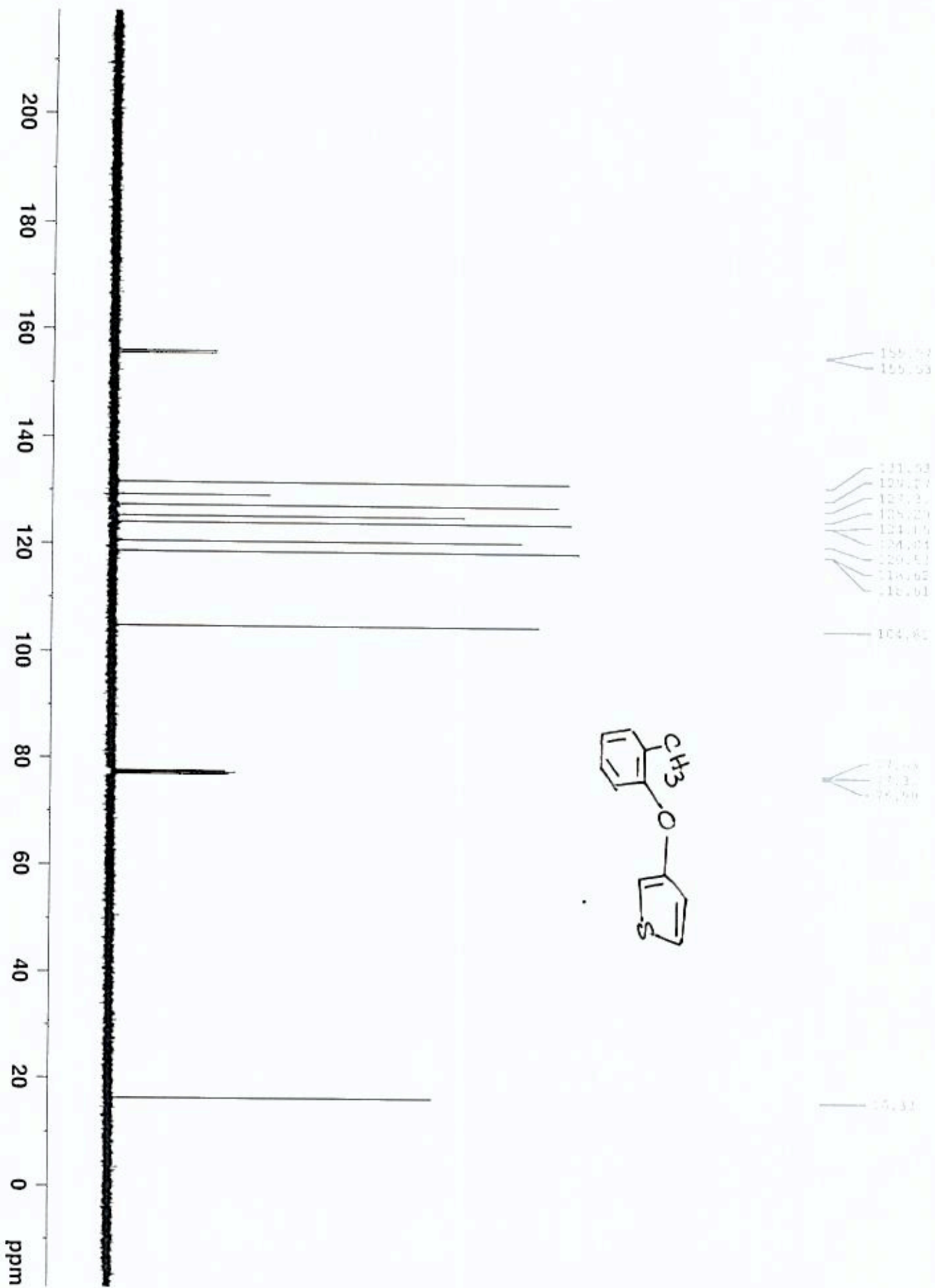


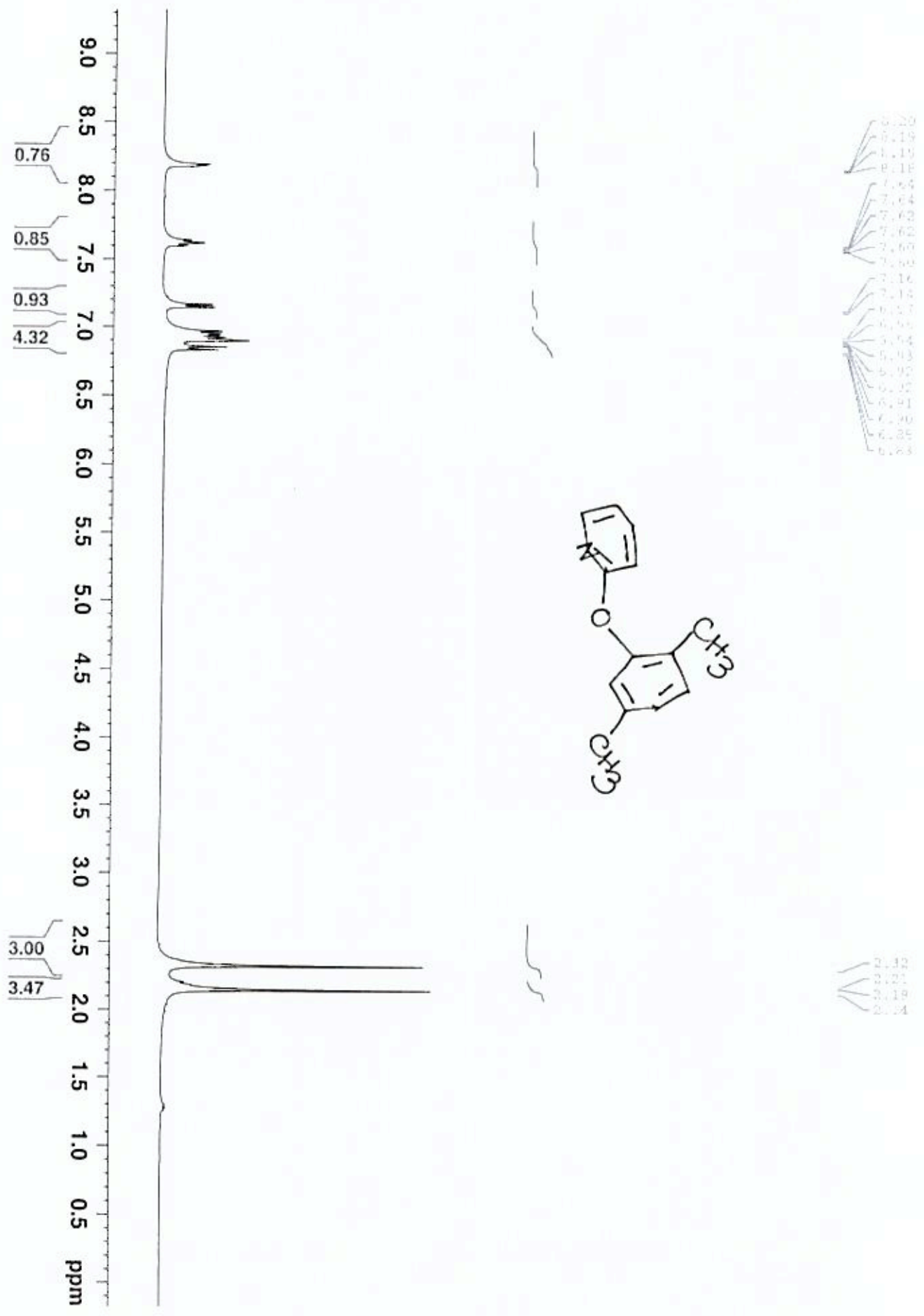




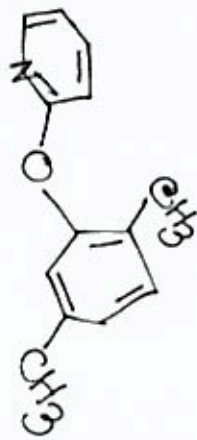
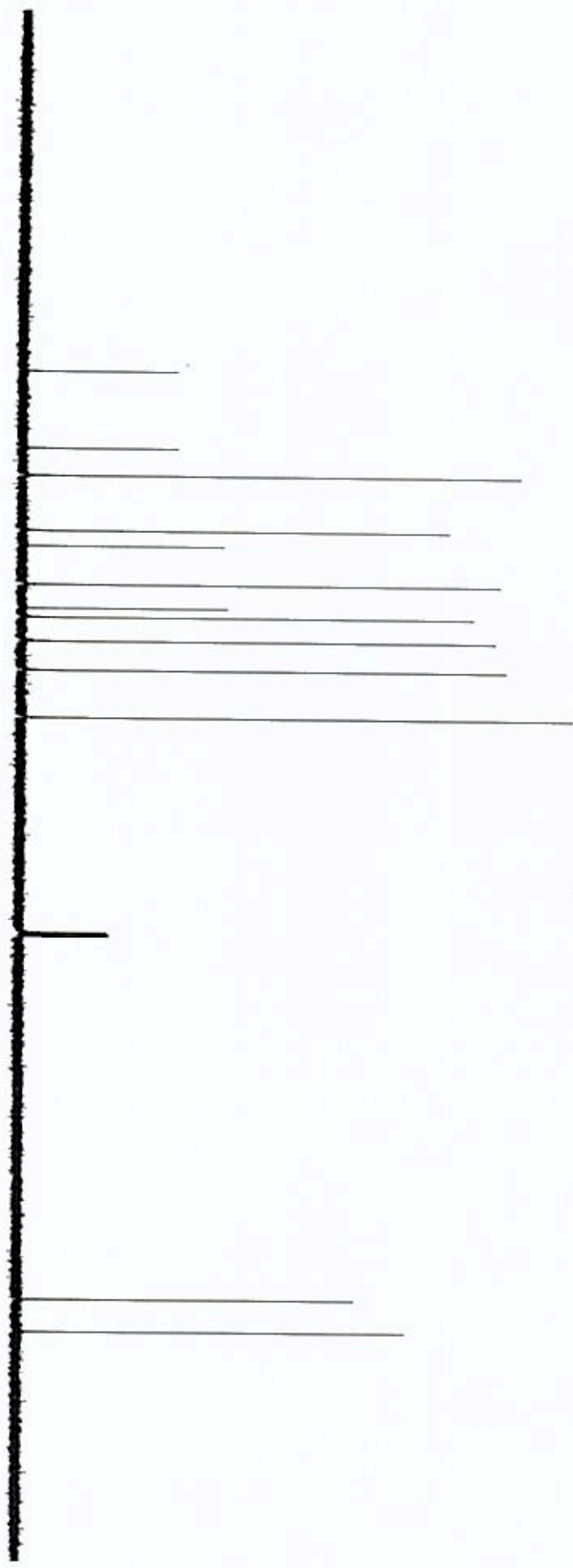
2.31



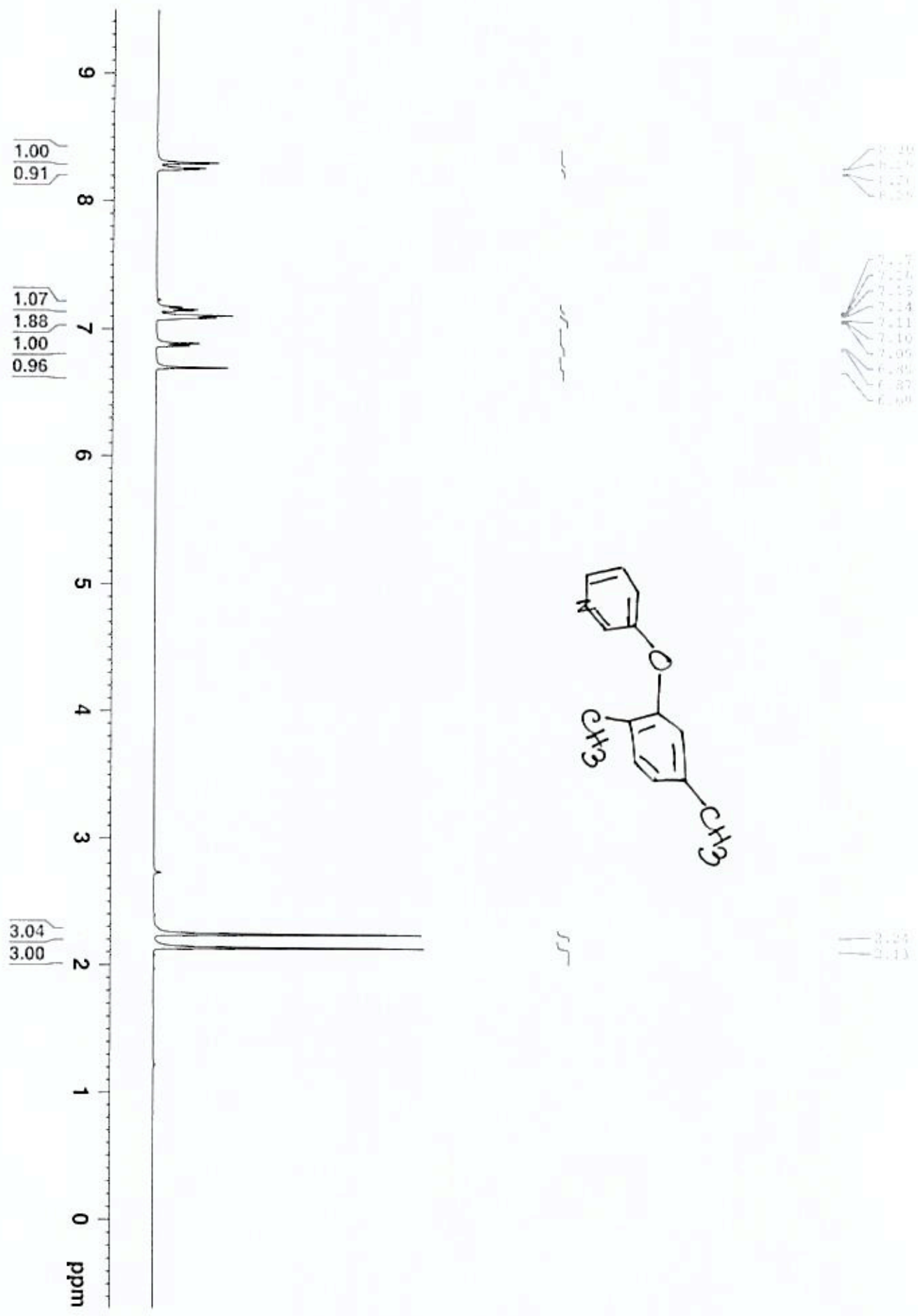


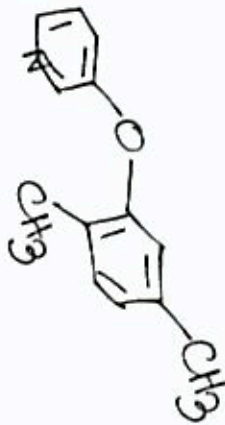
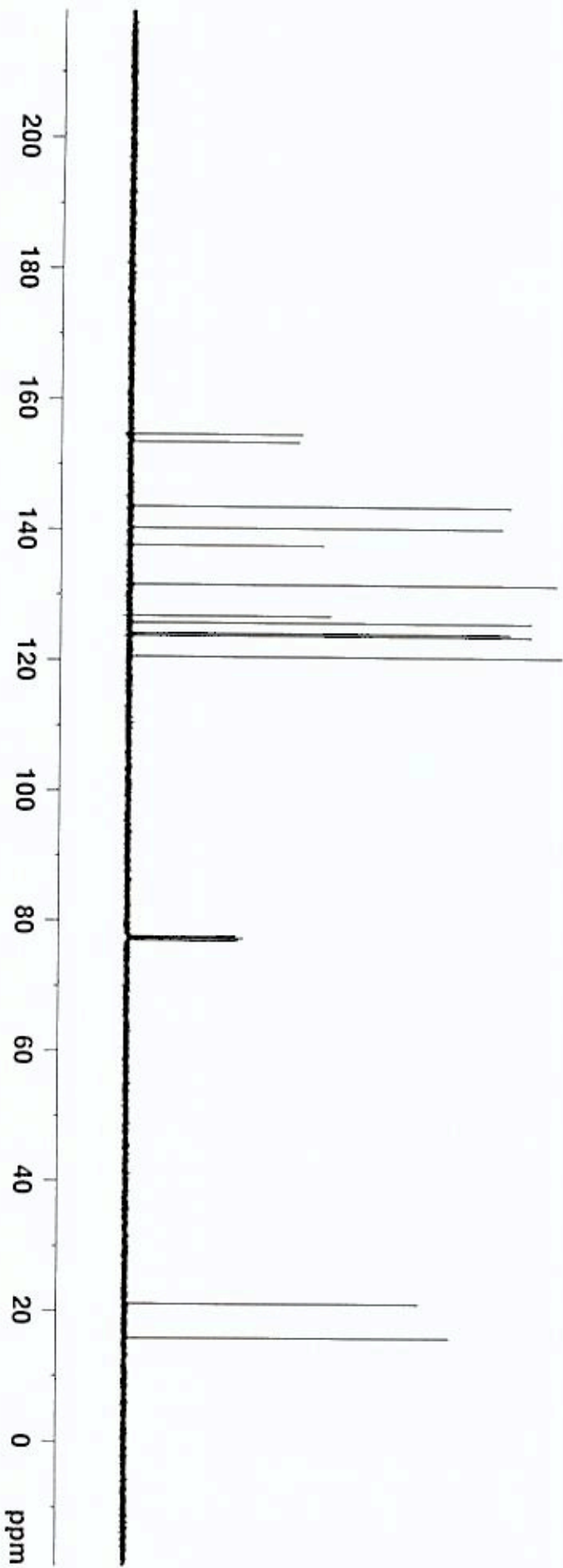


200
180
160
140
120
100
80
60
40
20
0
ppm



- 164.07
- 152.78
- 149.09
- 137.51
- 135.03
- 147.39
- 127.89
- 126.36
- 127.69
- 118.11
- 110.94
- 77.81
- 77.51
- 77.39
- 21.24
- 16.16

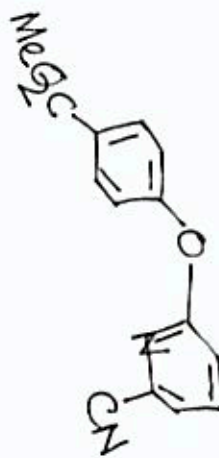
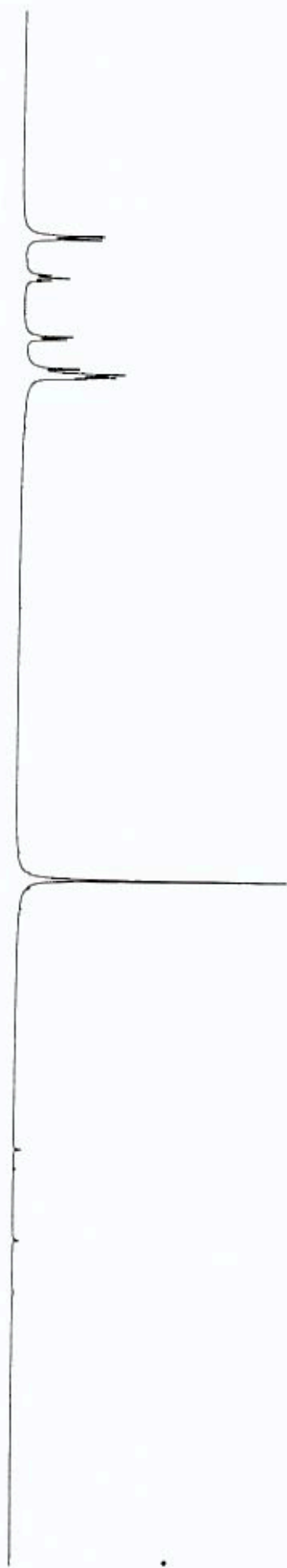
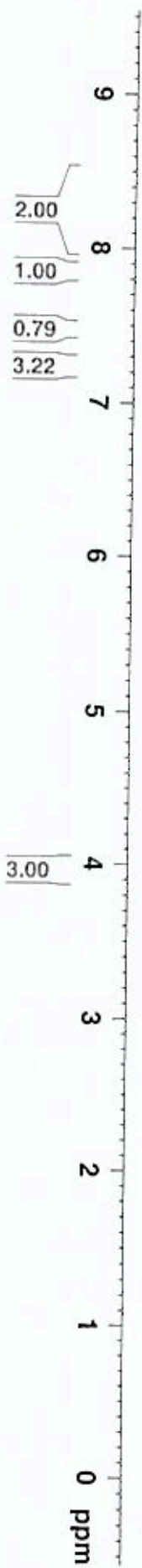




- 154.68
- 153.48
- 144.61
- 140.29
- 137.63
- 131.93
- 129.66
- 129.37
- 125.76
- 124.16
- 123.77
- 123.25
- 120.60

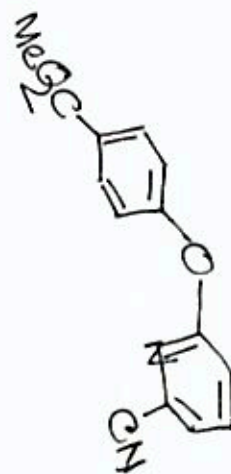
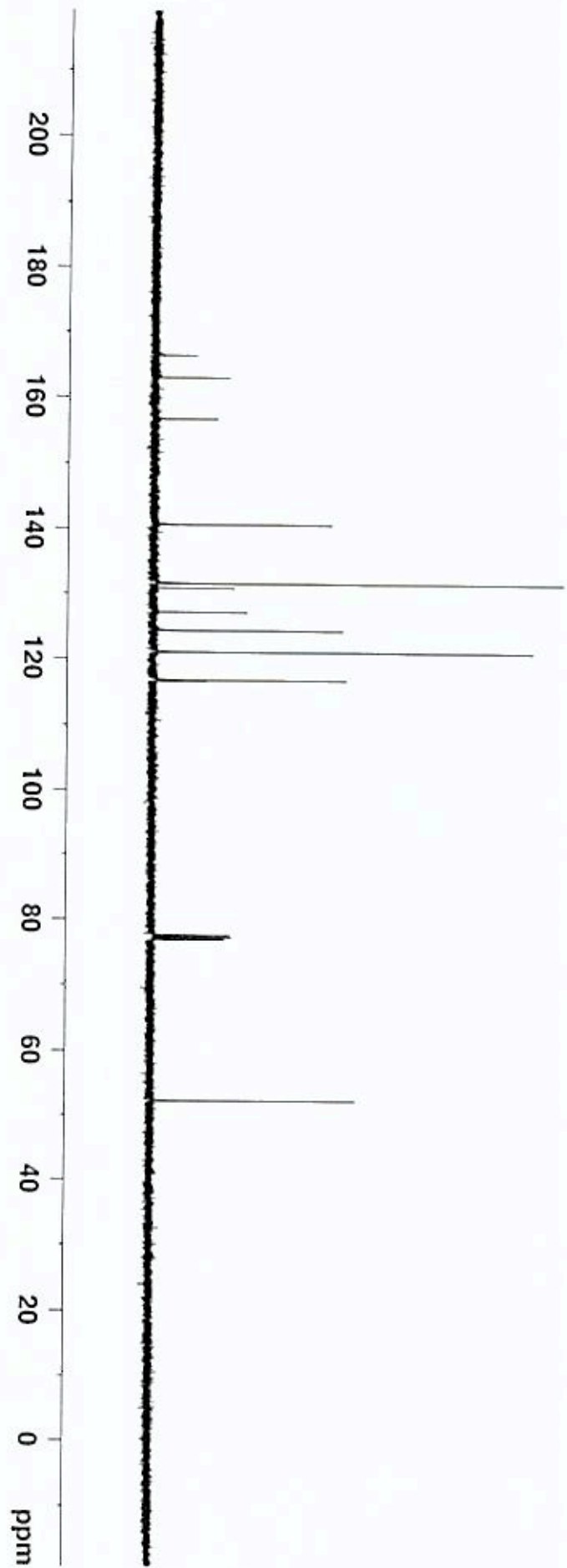
- 79.65
- 77.33
- 75.31

- 21.14
- 15.87



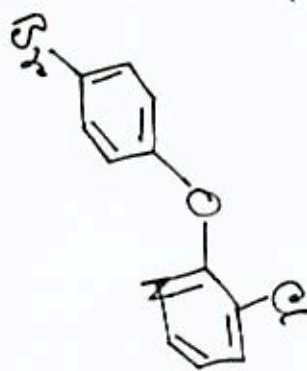
- 8.09
- 8.07
- 7.82
- 7.43
- 7.42
- 7.23
- 7.20
- 7.19
- 7.17
- 7.16

3.90



—	162.35
—	157.33
—	154.93
—	140.06
—	132.04
—	131.79
—	127.08
—	124.27
—	123.97
—	122.71
—	116.69
—	78.47
—	77.17
—	76.35
—	52.22

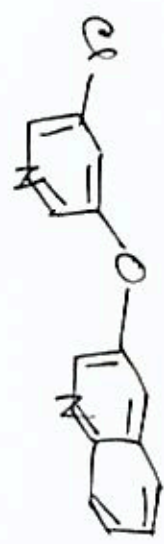
200 180 160 140 120 100 80 60 40 20 0 ppm



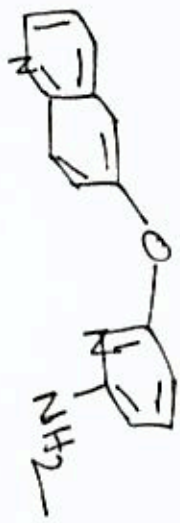
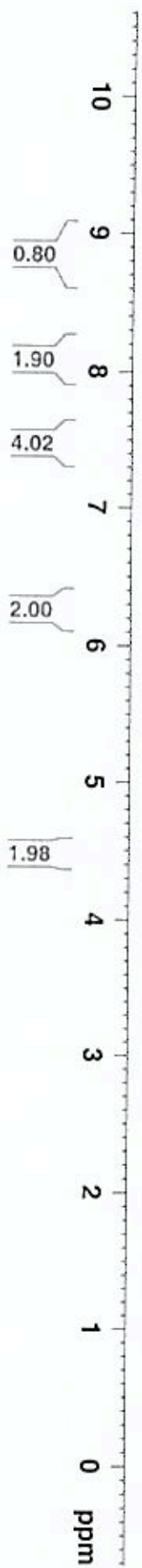
159.85
145.36
140.84
137.81
123.71
119.76
114.33
110.28

77.18
77.07
76.96

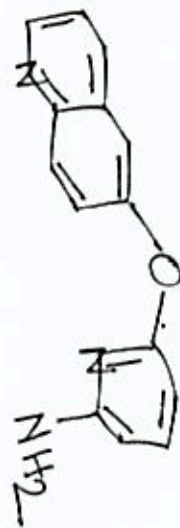
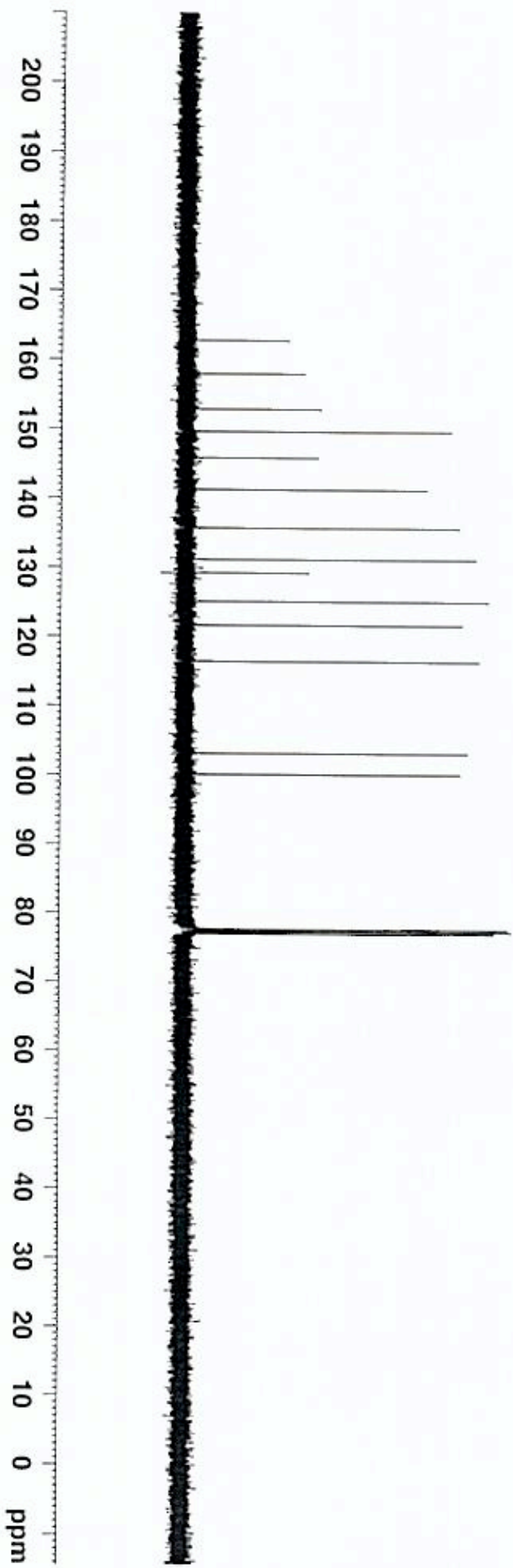
200 180 160 140 120 100 80 60 40 20 0 ppm



- 163.93
- 151.63
- 151.17
- 149.11
- 145.78
- 141.30
- 132.64
- 132.39
- 129.86
- 129.22
- 126.98
- 121.50
- 121.33
- 77.00
- 76.56
- 76.15

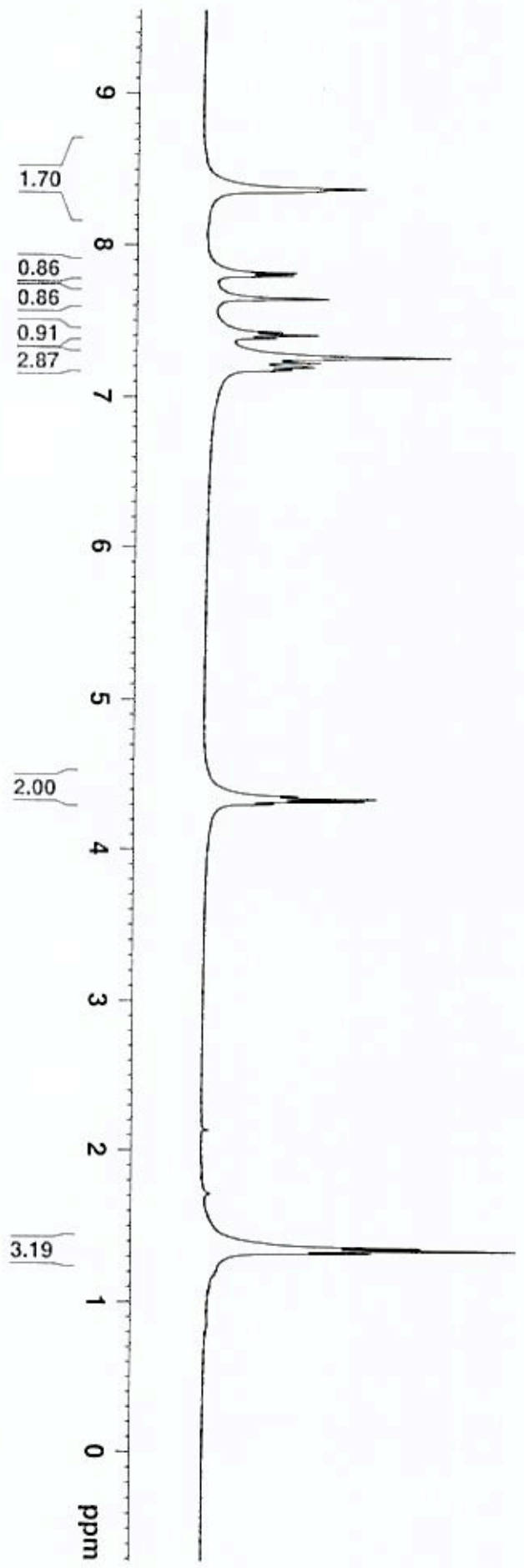
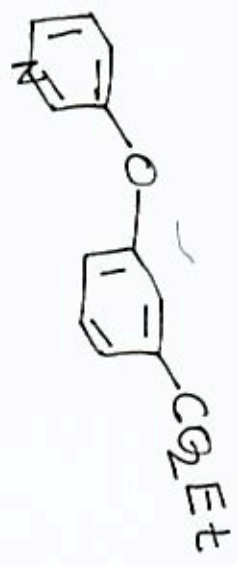


- 8.31
- 8.31
- 8.30
- 8.30
- 8.06
- 8.01
- 8.04
- 8.02
- 7.19
- 7.48
- 7.47
- 7.46
- 7.41
- 7.41
- 7.40
- 7.39
- 7.37
- 7.34
- 7.32
- 7.32
- 7.31
- 7.18
- 6.18
- 6.17
- 6.16
- 6.15
- 6.15
- 4.54



- 163.75
- 159.01
- 157.55
- 149.63
- 145.83
- 141.12
- 135.56
- 131.71
- 129.27
- 126.29
- 121.67
- 116.36
- 105.14
- 101.06

77.00
77.00
77.00

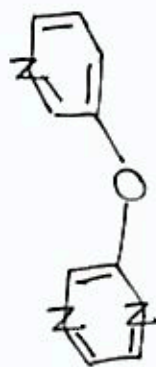
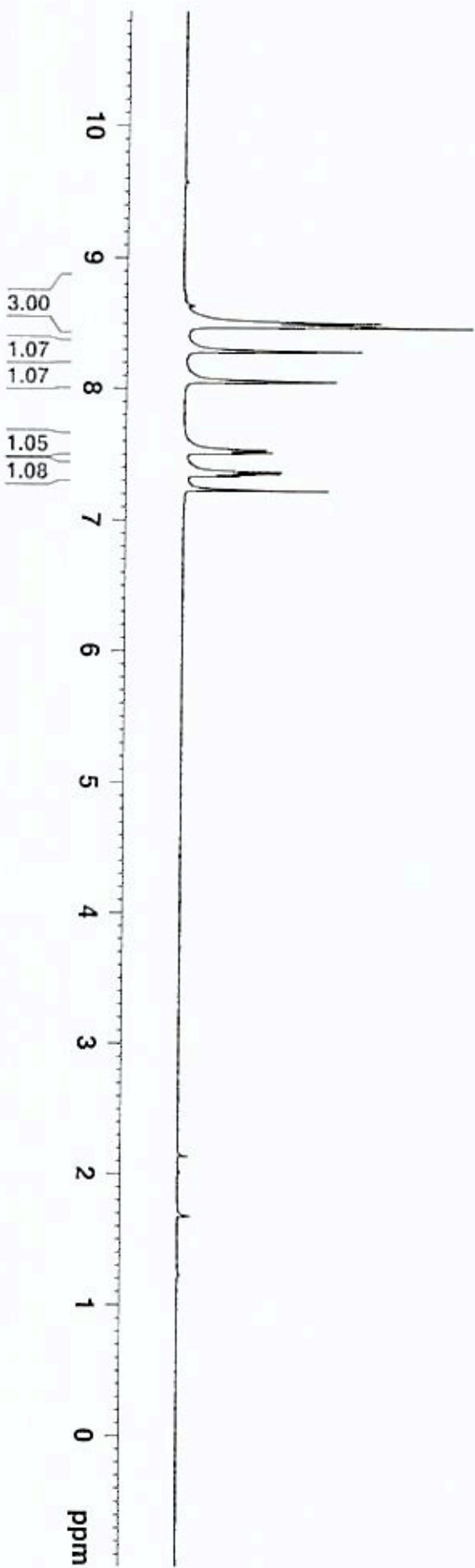


- 8.20
- 8.17
- 8.15
- 7.97
- 7.90
- 7.85
- 7.82
- 7.77
- 7.73
- 7.70
- 7.66
- 7.63

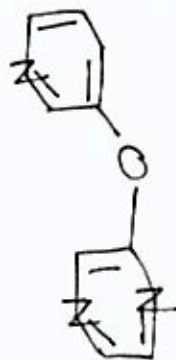
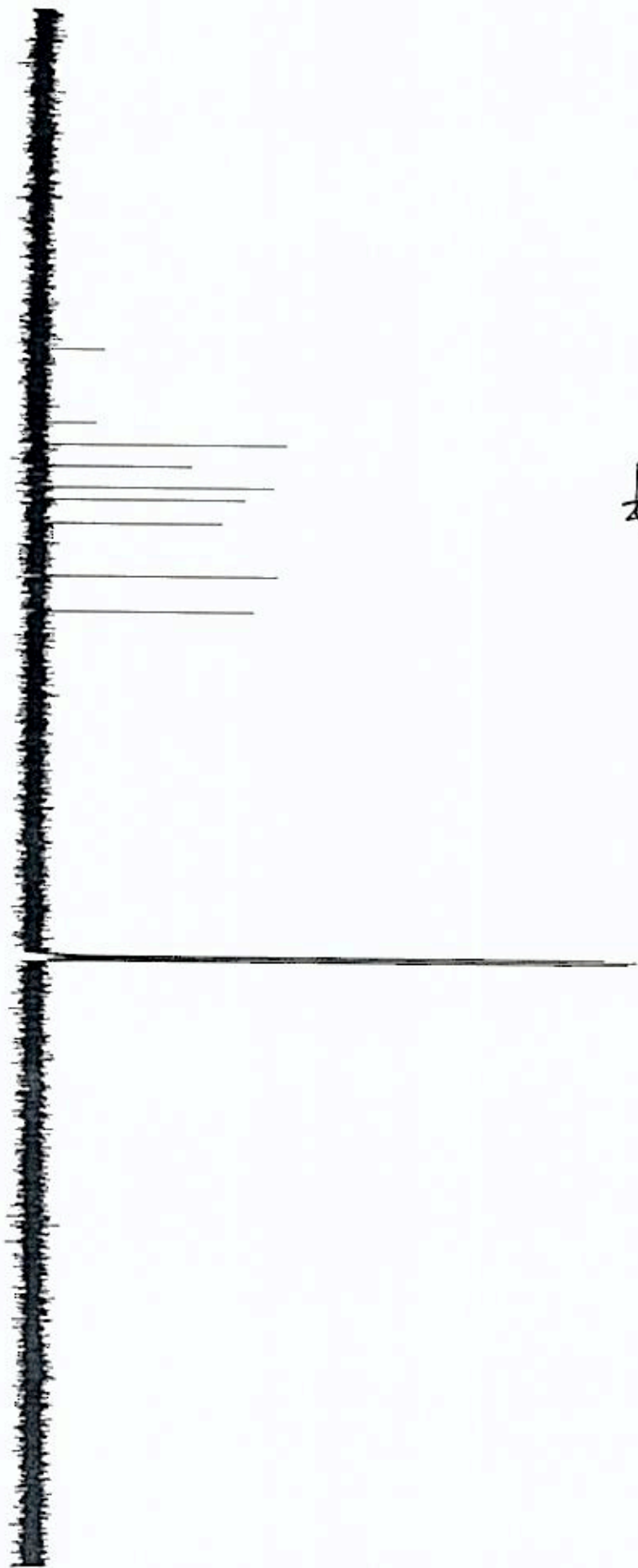
- 4.35
- 4.34
- 4.32
- 4.31

- 1.22
- 1.20
- 1.18



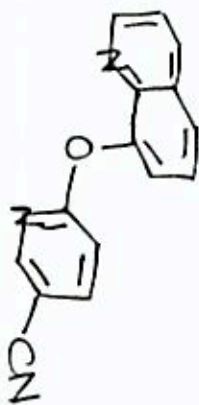
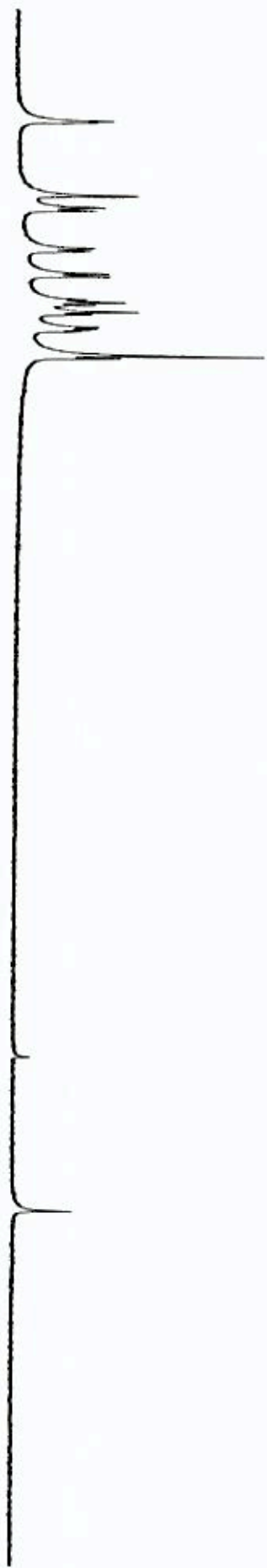


200 190 180 170 160 150 140 130 120 110 100 90 80 70 60 50 40 30 20 10 ppm



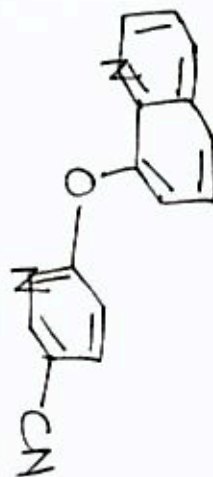
- 153.47
- 149.51
- 149.36
- 141.36
- 140.82
- 139.39
- 138.01
- 128.06
- 124.09

- 77.47
- 77.00
- 76.73



~ ~ ~ ~ ~





183.57
158.14
156.81
149.16
143.94
141.35
135.42
133.88
129.71
128.25
127.35
121.96
117.05
112.15
104.73
77.06
77.00
77.02

