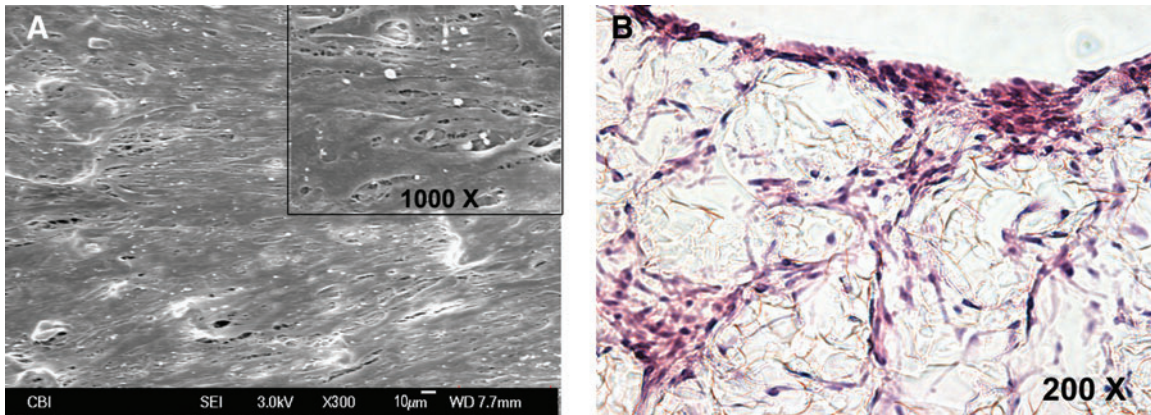
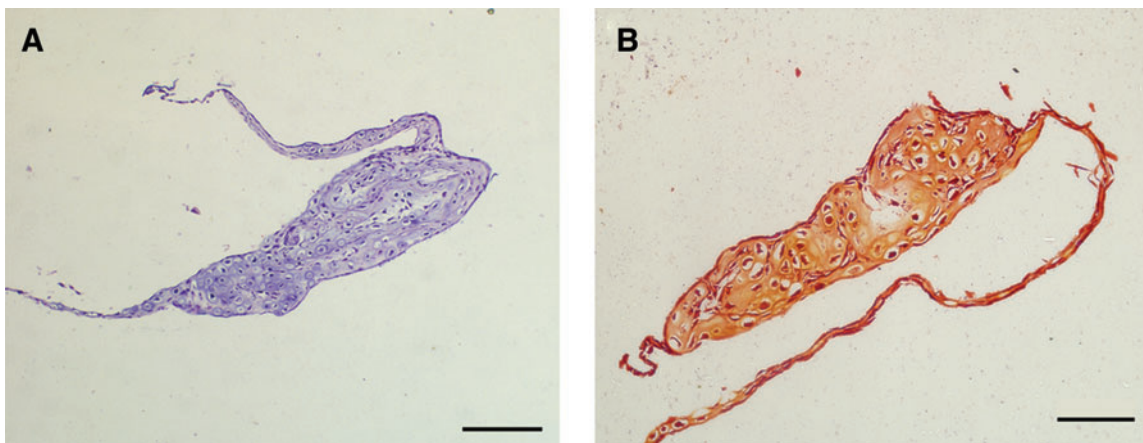


## Supplementary Data



**SUPPLEMENTARY FIG. S1.** (A) Scanning electron microscope images of smooth muscle cells cultured on poly(glycerol sebacate) scaffold (21 days), and (B) hematoxylin and eosin staining showed the cross-sectional view of the constructs, 200 $\times$ .



**SUPPLEMENTARY FIG. S2.** (A) Hematoxylin and eosin staining of cell aggregate formed on TCPS (21 days), and (B) Safranin-O staining showed glycosaminoglycan-enriched extracellular matrix. 200 $\times$ , scale bars = 50  $\mu$ m.

SUPPLEMENTARY TABLE S1. ANOVA FOR QUANTITATIVE COMPARISONS

<i>Comparison</i>	<i>Statistical test</i>	<i>Test statistic</i>	<i>p-Value</i>
Cell Capture	One-Way ANOVA	F(2,9)=9.14	0.007
	Levene's test	F(2,9)=2.02	0.188
DNA Quantification	Factorial ANOVA	F=149.90	<0.001
	Levene's test (for factorial ANOVA)	F=6.60	0.01
	One-way ANOVA, Day 3	F(2,9)=39.17	<0.001
	Levene's test (for Day 3)	F(2,9)=0.20	0.882
	One-way ANOVA, Day 10	F(2,9)=39.69	<0.001
Percent Tissue Weight	Levene's test (for Day 10)	F(2,9)=0.690	0.526
	One-way ANOVA	F(2,6)=3.52	0.098
	Levene's test	F(2,6)=0.339	0.725
Cellularity Per Area	One-way ANOVA	F(2,17)=26.91	<0.001
	Levene's test	F(2,15)=0.0	0.046
Collagen	One-way ANOVA	F(2,9)=30.01	<0.001
	Levene's test	F(2,9)=1.94	0.200
Collagen Per DNA	One-way ANOVA	F(2,9)=0.575	0.582
	Levene's test	F(2,9)=0.885	0.446
Insoluble Elastin	One-way ANOVA	F(2,9)=28.15	0.001
	Levene's test	F(2,9)=1.40	0.297
Insoluble Elastin Per DNA	One-way ANOVA	F(2,9)=6.38	0.019
	Levene's test	F(2,9)=1.48	0.278
Alkaline Phosphatase Activity	One-way ANOVA	F(3,12)=719	<0.001
	Levene's test	F(3,12)=4.66	0.022

SUPPLEMENTARY TABLE S2. POST-HOC TESTS FOR QUANTITATIVE COMPARISONS

<i>Comparison</i>	<i>Post-hoc test</i>	<i>p-Values</i>		
		<i>P-PGS vs. PGS</i>	<i>PL-P-PGS vs. PGS</i>	<i>PL-P-PGS vs. P-PGS</i>
Cell Capture	Tukey's HSD	0.010	0.015	0.963
DNA Quantification Day 3	Tukey's HSD ( $\alpha=0.025$ )	0.001	<0.001	0.047
DNA Quantification Day 10	Tukey's HSD ( $\alpha=0.025$ )	0.001	<0.001	0.013
Percent Tissue Weight	Tukey's HSD	0.823	0.097	0.210
Cellularity Per Area	Games-Howell	0.003	0.001	0.018
Collagen	Tukey's HSD	0.947	<0.001	<0.001
Insoluble Elastin	Tukey's HSD	0.516	<0.001	0.001
		<i>S-PGS vs. PGS</i>	<i>S-PGS vs. P-PGS</i>	<i>S-PGS vs. PL-P-PGS</i>
Collagen	Tukey's HSD	<0.001	<0.001	<0.001
Collagen Per DNA	Games-Howell	<0.001	<0.001	<0.001
Insoluble Elastin	Tukey's HSD	0.002	<0.001	<0.001
Insoluble Elastin Per DNA	Games-Howell	<0.001	<0.001	<0.001