

Ghilarov et al., Supplementary data.

Supplementary figure legends.

Supplementary figure S1. Detection of X-type McB in producing *E. coli* cells.

A. Direct MALDI-MS analysis of *E. coli* cells producing McB. See Experimental Procedures for details.

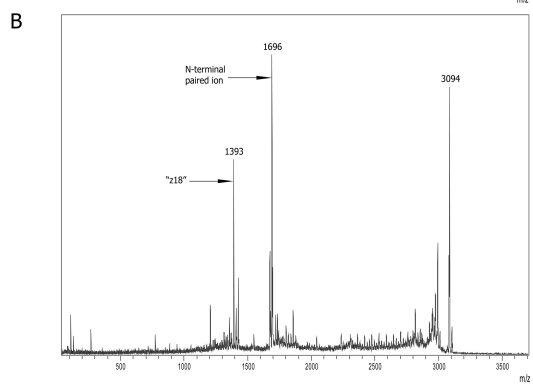
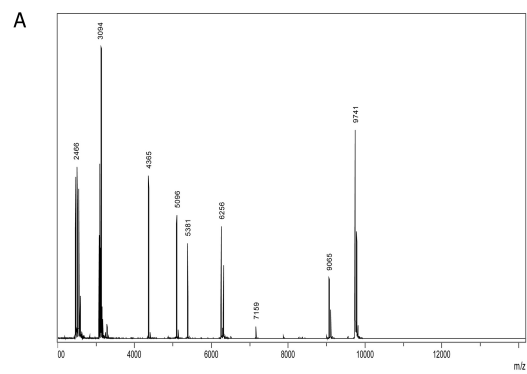
B. MS-MS analysis of $m/z=3094$ mass-ion corresponding to McB $\Delta 0$ from the spectrum, shown in panel A.

Supplementary figure S2. N-type McB $\Delta 0$ remains unchanged during standard purification.

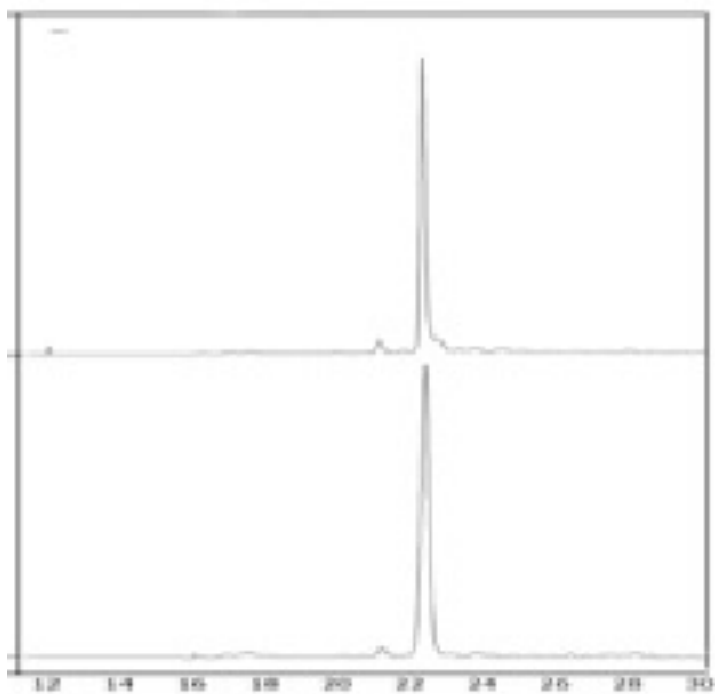
Pure N-type McB $\Delta 0$ (analyzed by reverse phase HPLC at the top panel) was mock purified by the standard McB purification procedure (see Experimental Procedures) and re-analyzed by HPLC (bottom panel).

Supplementary figure S3. HPLC analysis of X-type McB $\Delta 0$.

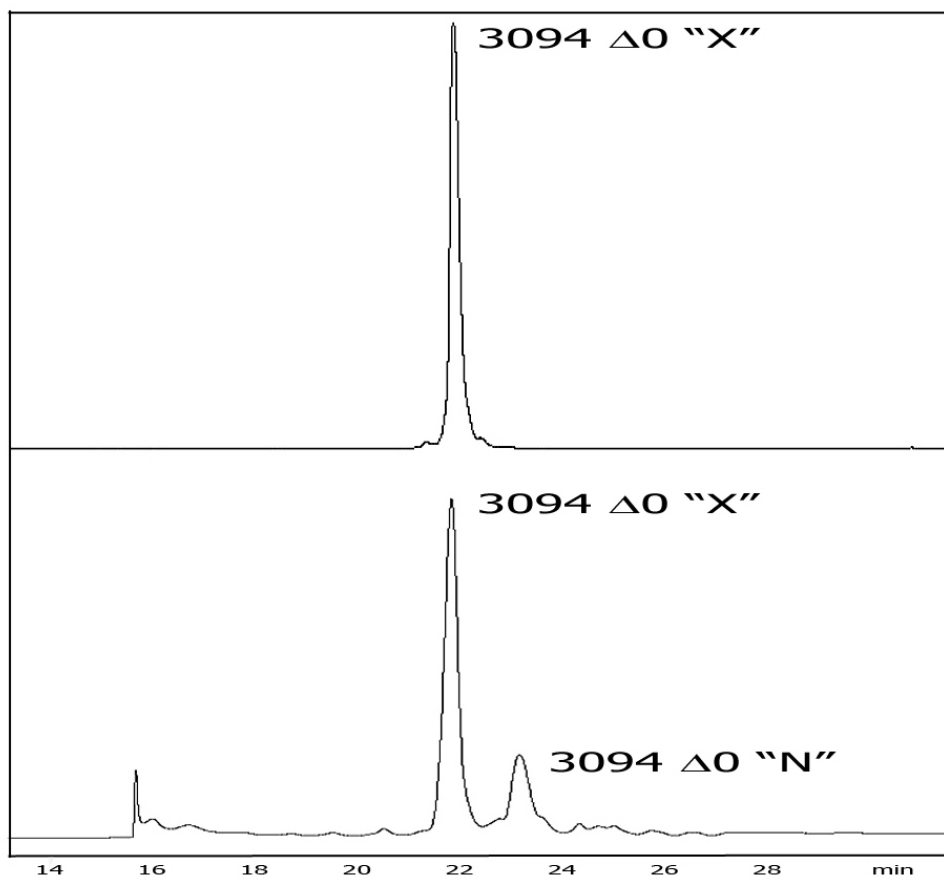
The starting material shown at the top panel was incubated overnight at room temperature in pH 7.4 buffer prior to HPLC analysis (bottom panel).



Supplementary figure 1



Supplementary Fig. 2



Supplementary Fig. 3