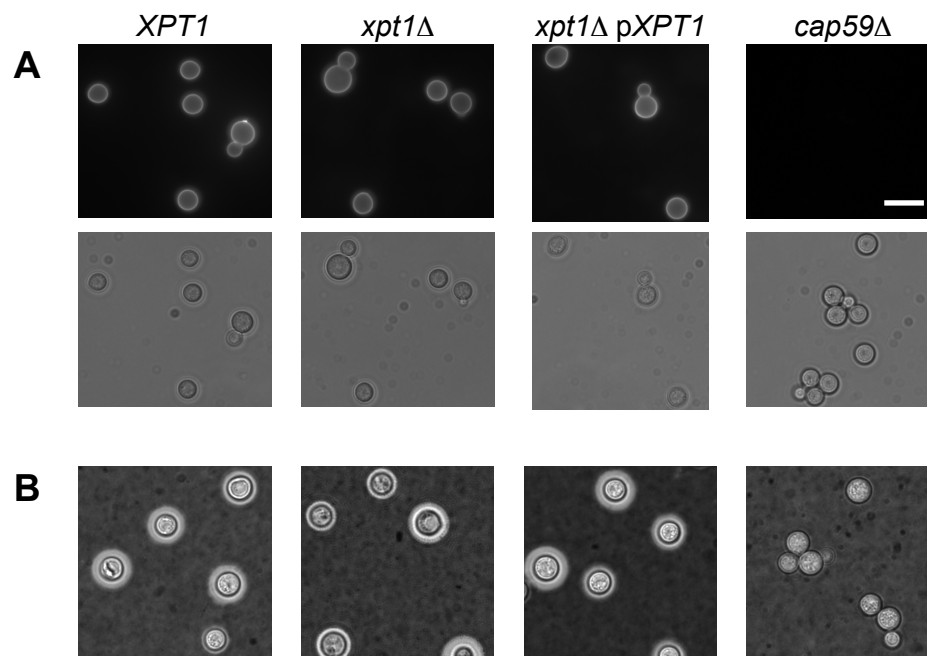


Supplemental Figure 1
Wild-type and *xpt1* Δ mutant cells show similar capsule morphology



Panel A, immunofluorescence microscopy of the indicated strains labeled with monoclonal antibody F12D2 as in the Experimental Procedures. Bright field (upper) and fluorescent (lower) images are shown.

Panel B, bright field image of the indicated strains grown under capsule-inducing conditions and then mixed with India Ink (see Experimental Procedures). Bar, 10 Microns.