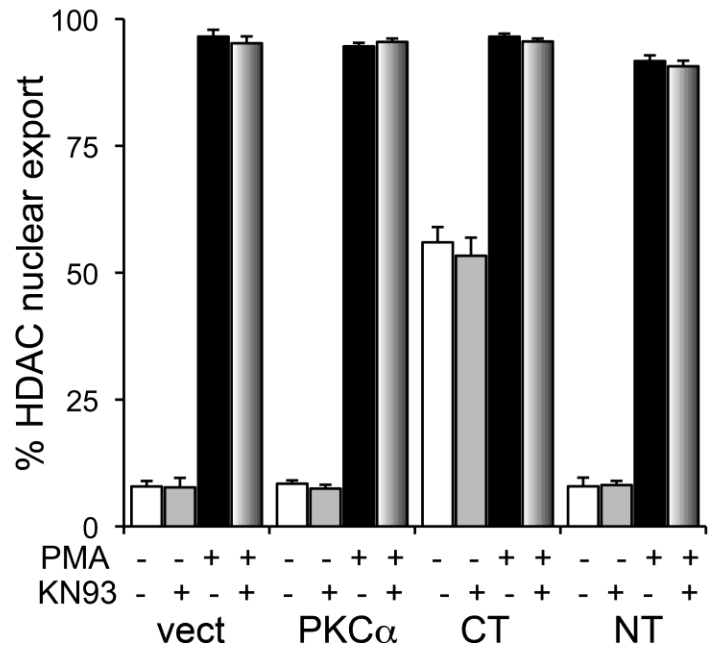
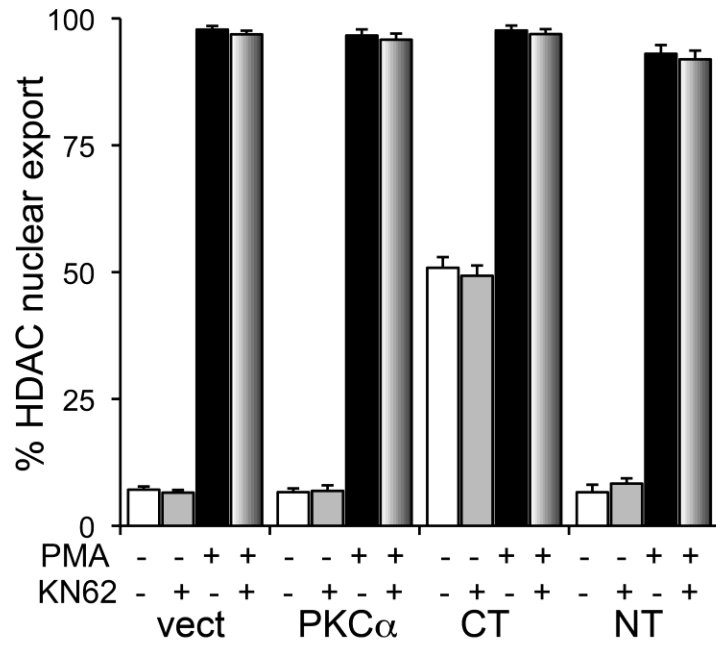


**Supplemental Figure S1.** *Effects of calmodulin kinase inhibitors on HDAC5 nuclear export.* Studies were performed as described for Figure 4, n = 4 per group. Neither CaM kinase inhibitor showed any inhibitor effect.

Supplemental Figure 1



**Supplemental Table S1.** (supplied as Excel spreadsheet.) *Results of microarray RNA expression profiling.* mRNAs significantly regulated in PKC $\alpha$ -CT hearts are ordered according to the magnitude of fold-change compared to tTA hearts. Expression values (copies/cell) are shown for tTA hearts, together with corresponding fold-changes and p-values for PKC $\alpha$  and PKC $\alpha$ -NT hearts.

**Supplemental Table S2.** (supplied as Excel spreadsheet.) *Results of expression profiling by RNA-sequencing.* mRNAs significantly regulated in PKC $\alpha$ -CT hearts are ordered according to the magnitude of fold-change compared to tTA hearts. Expression values (copies/cell) are shown for tTA hearts, together with corresponding fold-changes and p-values for PKC $\alpha$  and PKC $\alpha$ -NT hearts.