

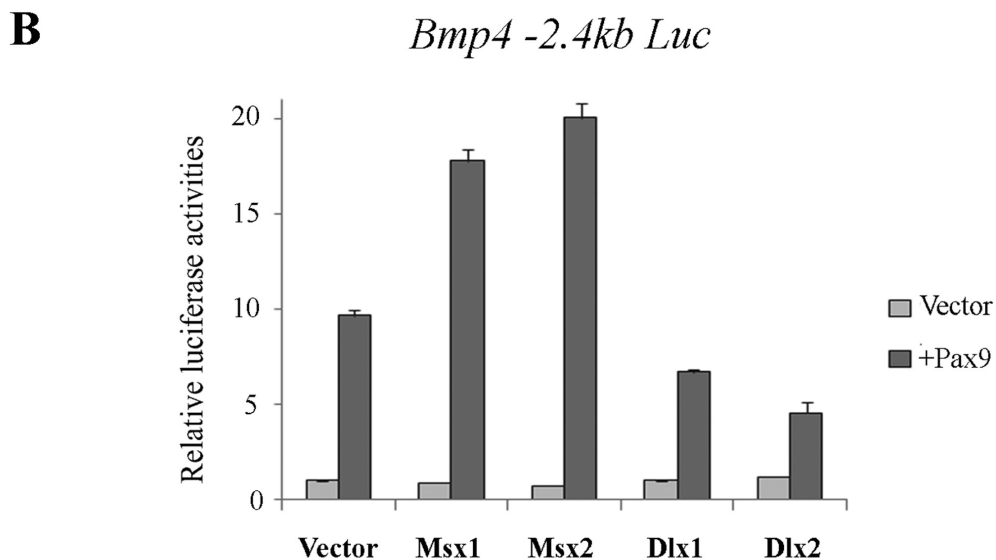
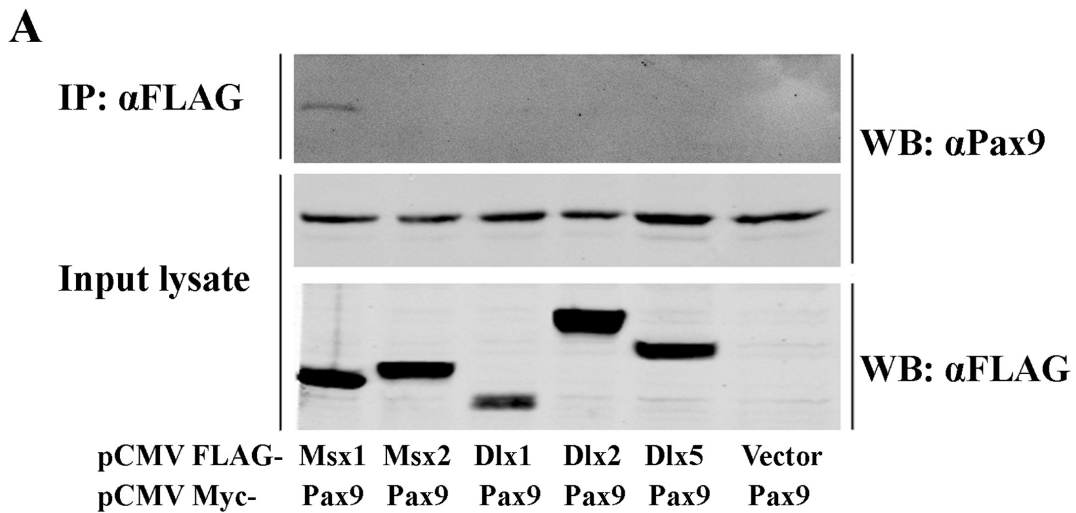
Y. Wang¹, H. Kong¹,
G. Mues¹, and R. D'Souza^{1*}

¹Department of Biomedical Sciences, Texas A&M University Health Science Center Baylor College of Dentistry, 3302 Gaston Ave., Dallas, TX 75246, USA; *corresponding author, rdsouza@bcd.tamhsc.edu.

J Dent Res 90(3):311-316, 2011

APPENDIX

Msx1 Mutations: How Do They Cause Tooth Agenesis?



Appendix Figure. Co-immunoprecipitation assay and reporter assay with Msx and Dlx proteins. **(A)** COS7 cells co-transfected with Myc-tagged Pax9 proteins and FLAG-tagged Msx or Dlx proteins. Upper panel: Western blot analyses of immunoprecipitates of whole cell lysates pulled down with anti-FLAG antibody and probed with an anti-Pax9 antibody. Middle panel: Whole cell lysates probed with anti-Pax9 antibody or (lower panel) anti-Flag antibody. **(B)** *Bmp4* promoter-reporter constructs (p2.4 *Bmp4*-luciferase) were co-transfected with the different Msx/Dlx expression vectors alone (in light gray) or together with the wildtype Pax9 expression vector (in dark gray) at a 1:2 ratio.