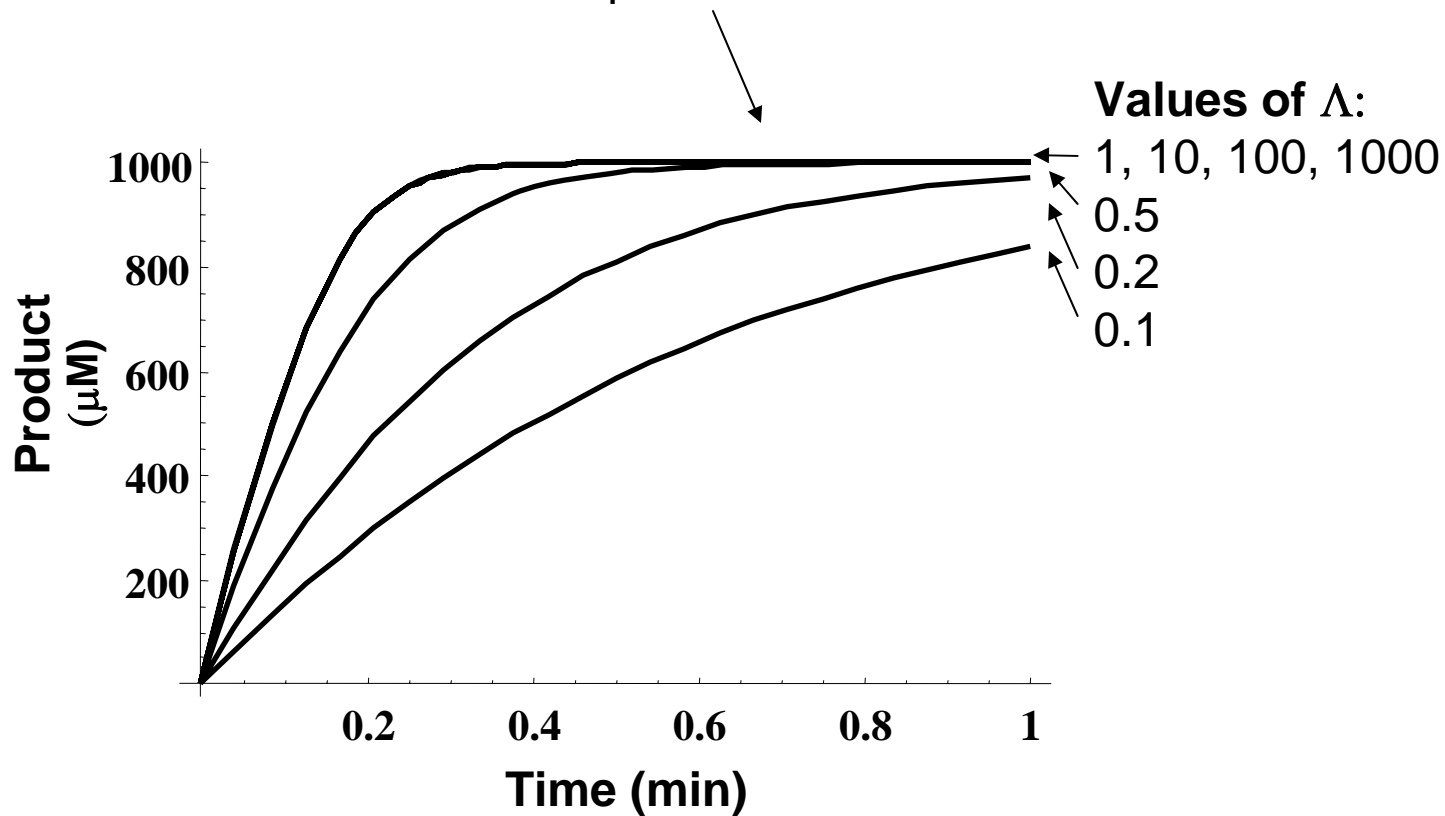


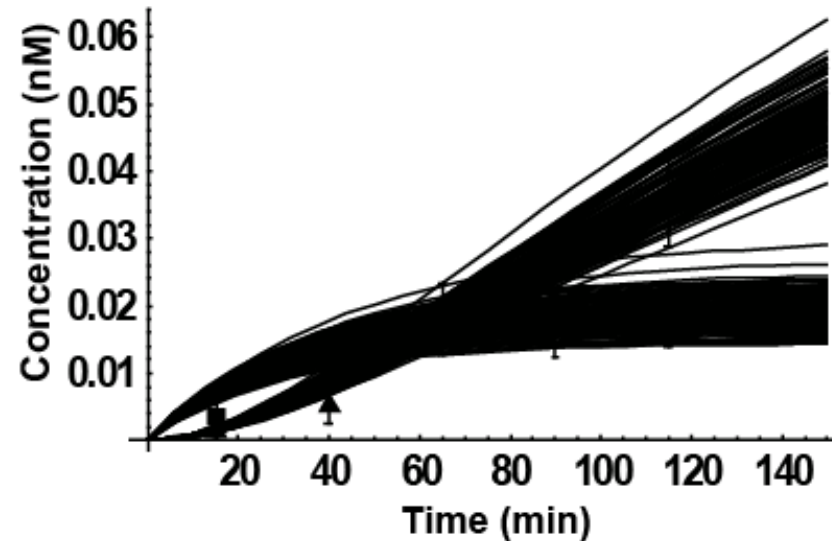
Yang, Additional File 3: Λ Approximation and Langevin Equation

A. Λ Approximation (Yang et al. *Bioinformatics* 2005, 21(6):774-780) :

While increasing the values of Λ , reaction curves converge to the *Michaelis-Menten* equation



B. Langevin Equation: the probabilistic perturbations of transcription and splicing rates to simulate the experimental variations shown in Figure 4D.



Notes:

1. Each line represents one stochastic simulation over time.
2. The overlapping lines represent the range of variations corresponding to the experimental error bars in Figure 4D.