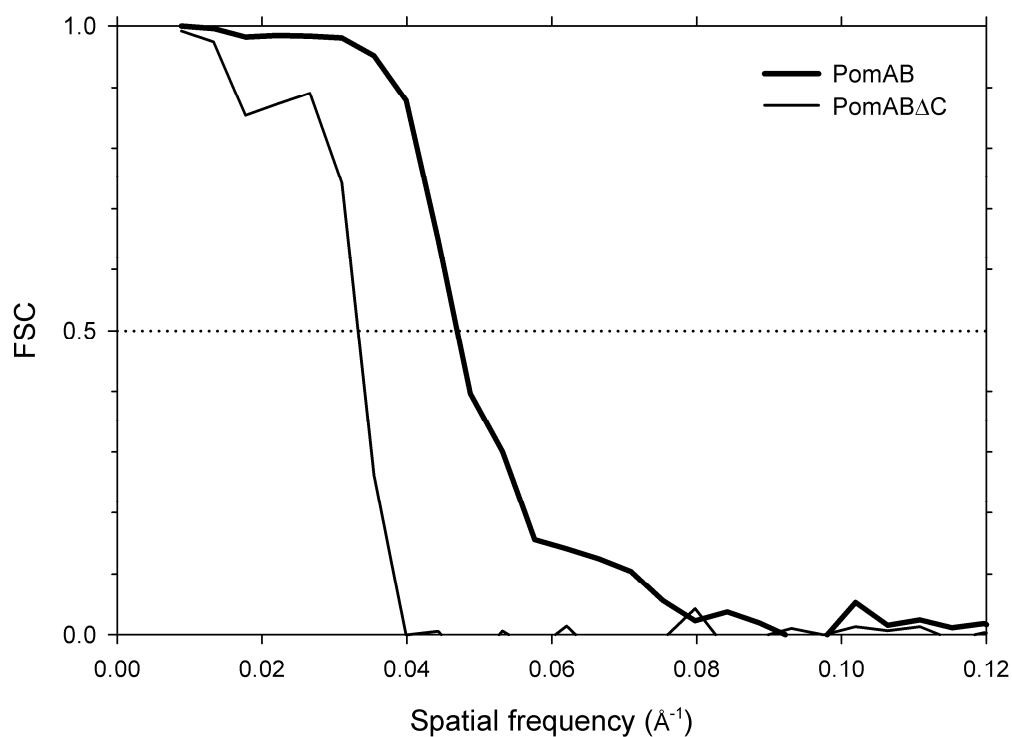


# Supplemental Material for "Structure of the Flagellar Motor Protein Complex PomAB: Implications for the Torque-Generating Conformation"

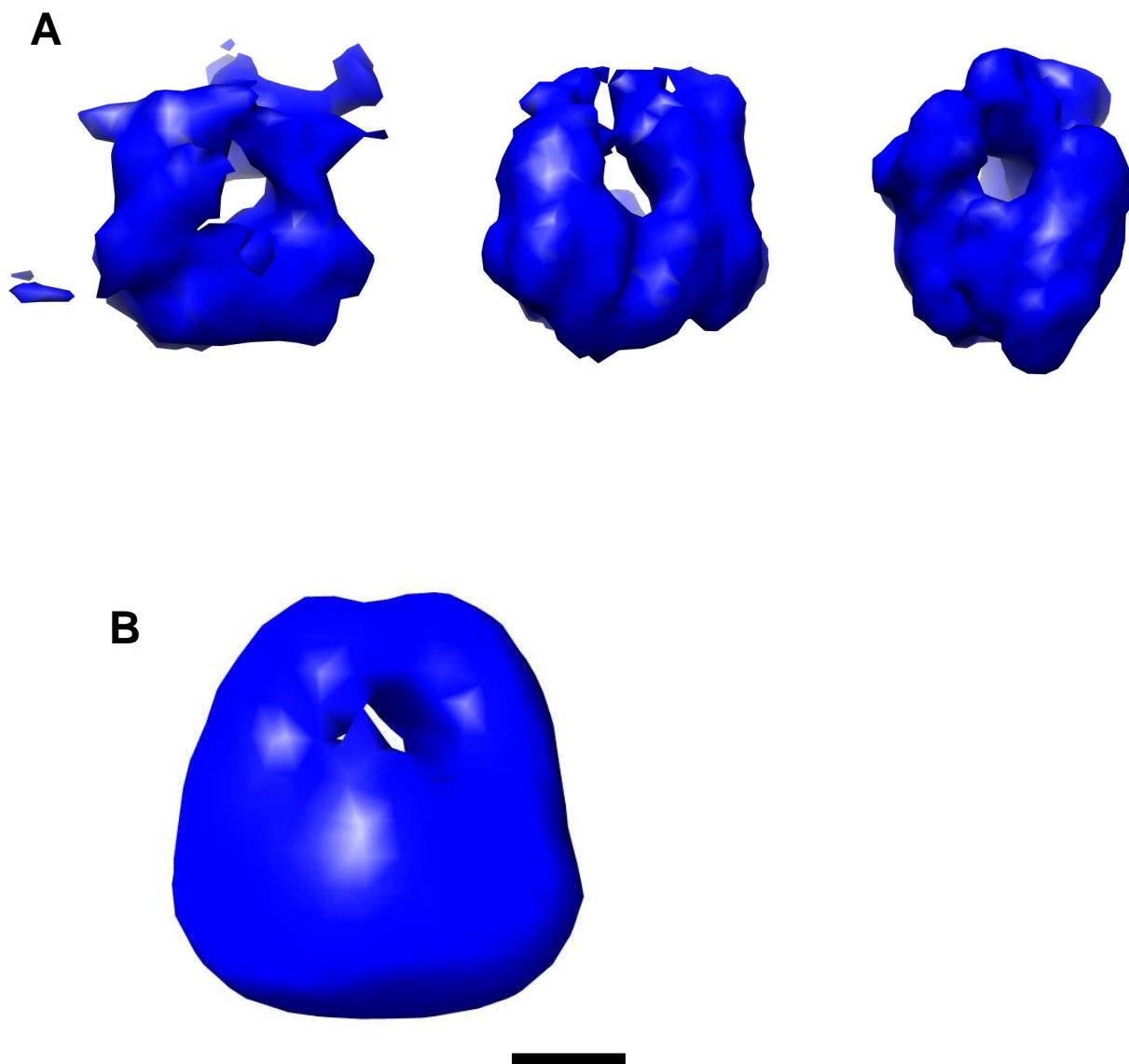
Koji Yonekura, Saori Maki-Yonekura and Michio Homma

E-mail address of the corresponding author: KY

yone@spring8.or.jp



**Fig. S1.** Fourier shell correlations of the reconstructions of PomAB with (thick line; from the wild-type PomAB particles in Fig. 4A) and without (thin line; PomAB $\Delta$ C, blue solid in Fig. 4D) the PG-binding domain.



**Fig. S2.** Tomographic reconstructions of PomAB. A. Typical examples of individual molecular tomograms. B. An average of 19 molecular tomograms. Scale bar, 25 Å.