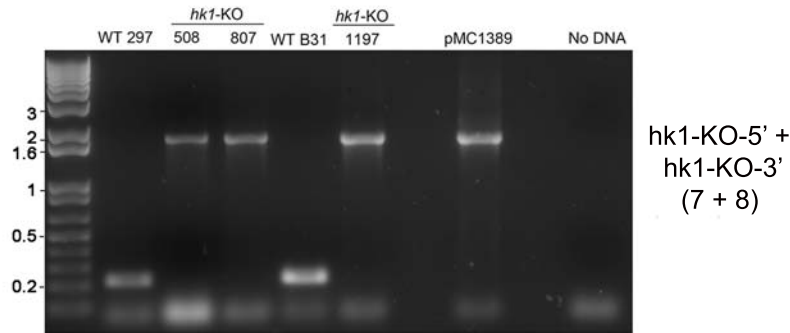
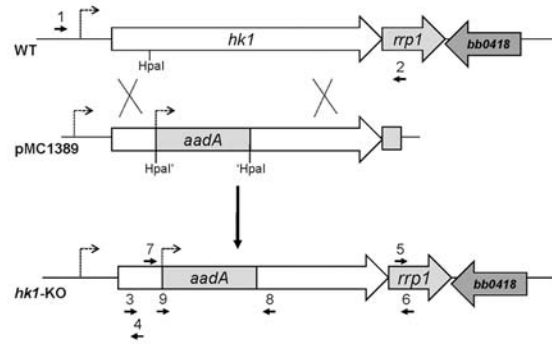
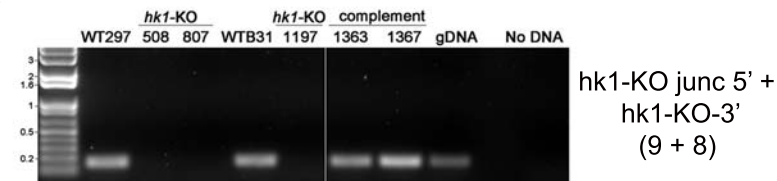


A



B



Supplemental Figure 2. A. Insertion of the $P_{\text{figB}}\text{-aadA}$ cassette into *hk1* in strains 297 (Bb508 and Bb807) and B31 5A4 NP1 (Bb1197) was confirmed by PCR using primers *hk1-KO-5'* and *hk1-KO-3'* (7 + 8). Wild-type 297 genomic DNA (gDNA) was used as a positive control. **B.** Confirming complementation of Bb1197 with a wild-type copy of *hk1* contained on a cp9-based Gent^R plasmid (Bb1363 and Bb1367) by PCR using primers *hk1-KO-5'* + *hk1-KO junc 3'* (9 + 8). Wild-type B31 5A4 NP1 genomic DNA (gDNA) was used as a positive control. 1-Kb Plus DNA ladder is shown to the left in both panels.