

Supporting Information

Conjugation of cRGD Peptide to Chlorophyll-a Based Photosensitizer (HPPH) Altered its Pharmacokinetics with Enhanced Tumor-Imaging and Photodynamic Efficacy

Avinash Srivatsan¹, Manivannan Ethirajan¹, Suresh K. Pandey¹, Shipra Dubey¹, Ting-Hsiu Liu³, Masayuki Shibata³, Joseph Missert¹, Janet Morgan² and Ravindra K. Pandey^{1,*}

¹Photodynamic Therapy Center, Cell Stress Biology and ²Department of Dermatology, Roswell Park Cancer Institute, Buffalo, NY 14263. ³Biomedical Informatics, Department of Health Informatics, University of Medicine & Dentistry of New Jersey – School of Health Related Professions, Newark, NJ 07107

Contents

- Page S1: Title of the paper, authors along with the contents
Page S2-4: Synthetic procedure and copies of ¹H NMR spectra of selective compounds
Page S4-5: HPLC Chromatograms of selective compounds
Page S6: *In vitro* photosensitizing efficacy of HPPH and its peptide conjugates in 4T1 cells
Page S6: *In vitro* uptake of HPPH and its peptide conjugates in U87 and 4T1 cells
Page S7: False color images showing localization of conjugate **7** in 4T1 cells.

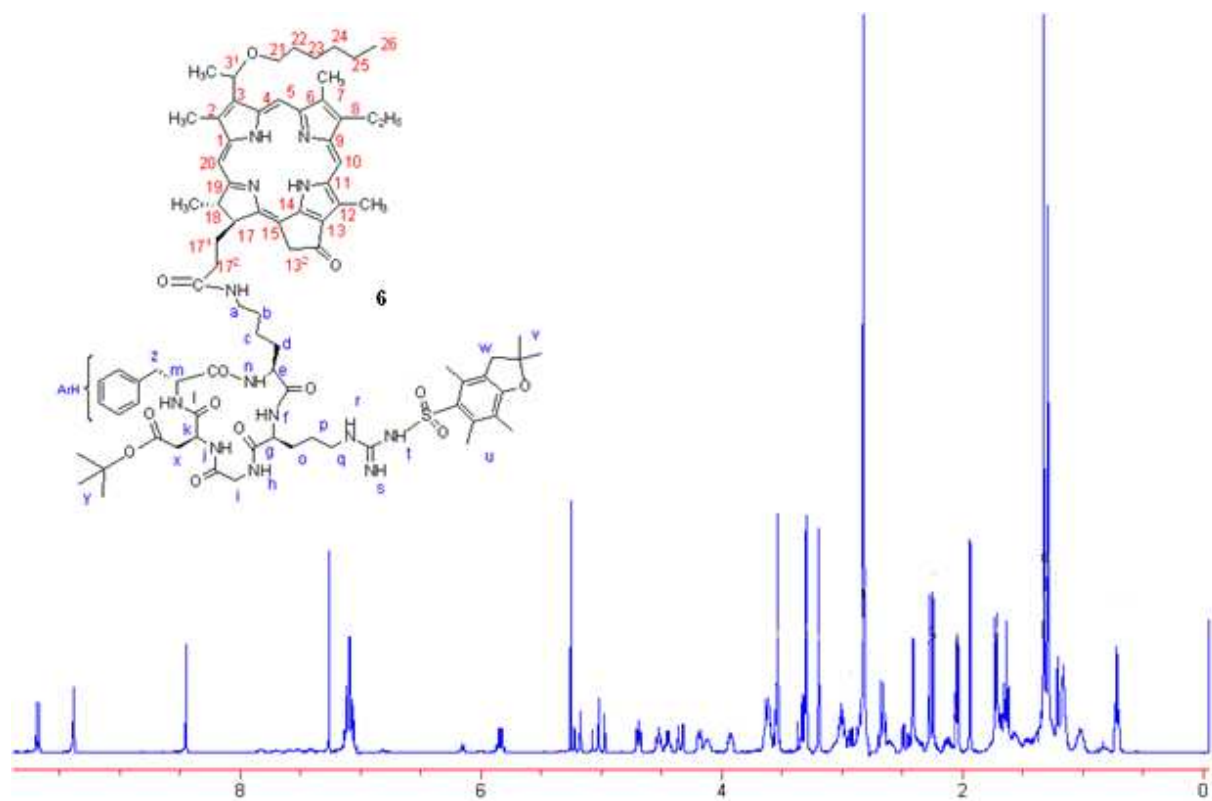


Figure 1

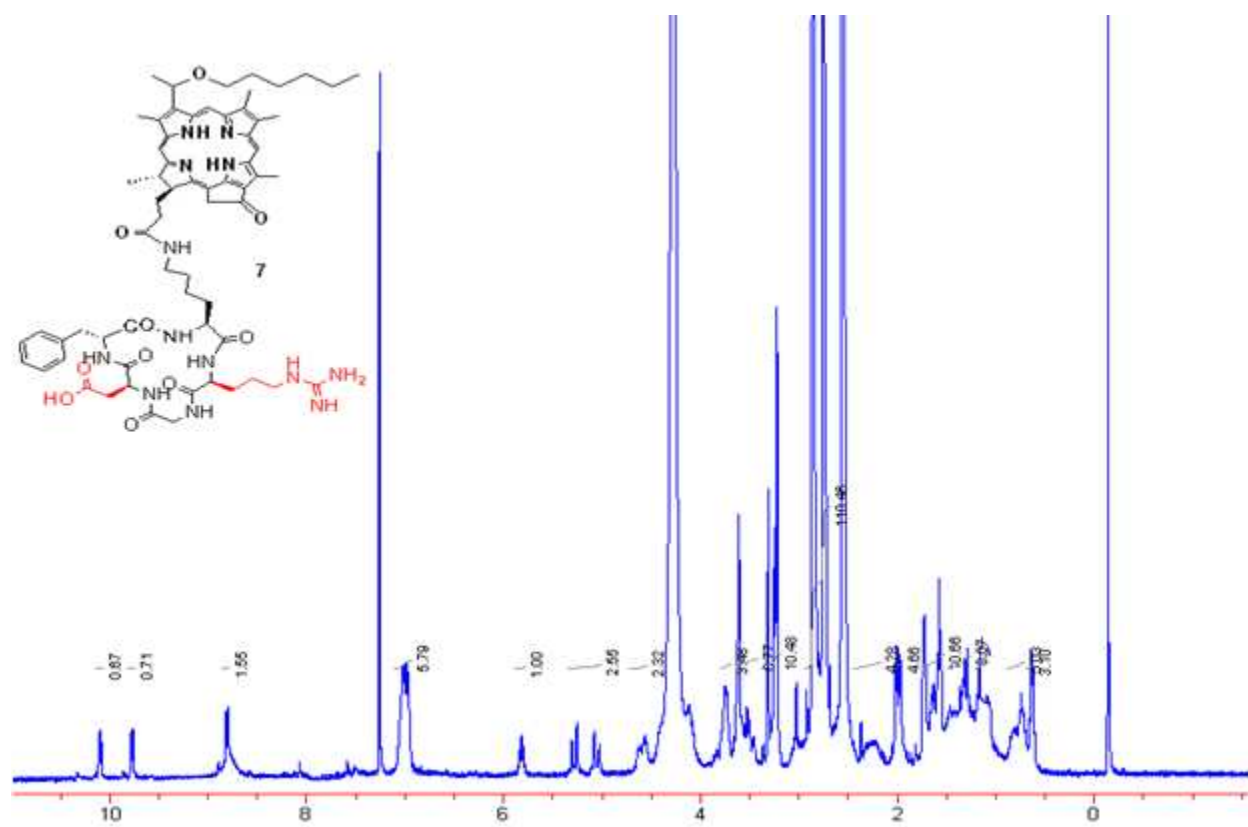
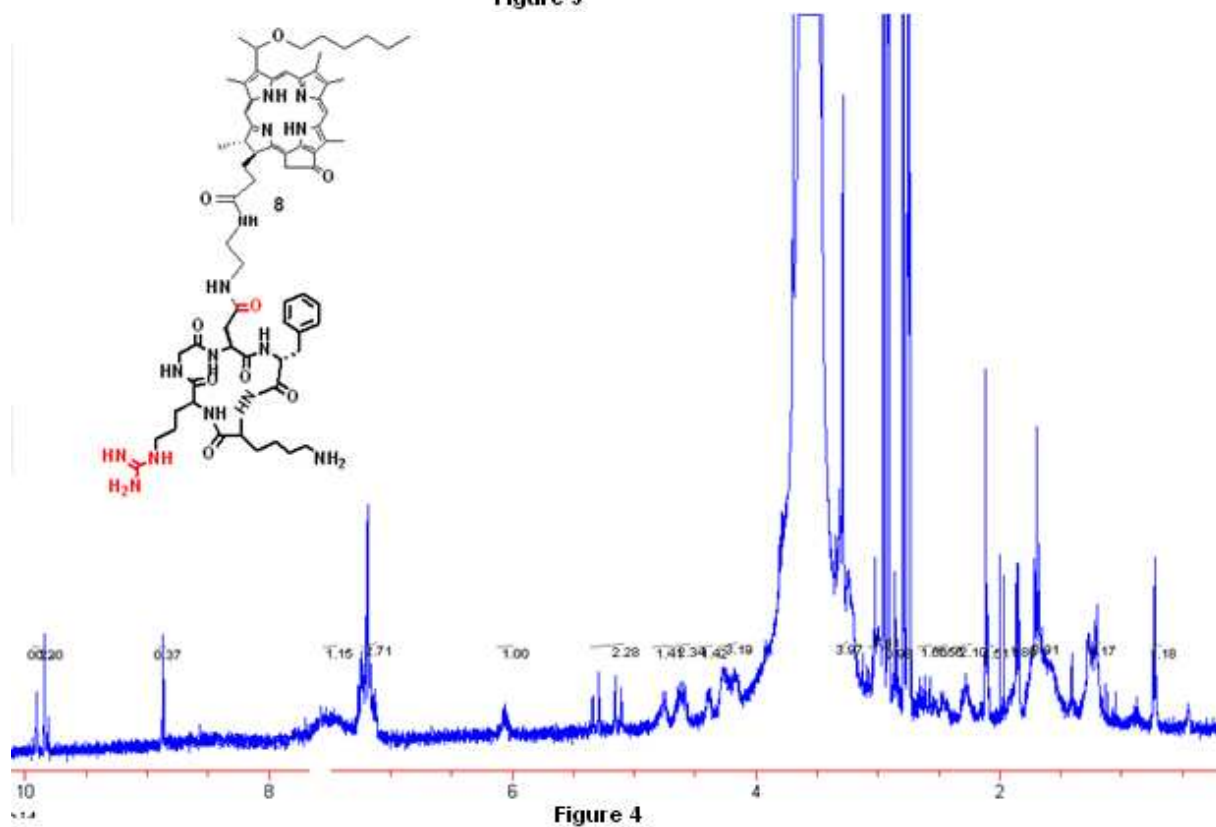
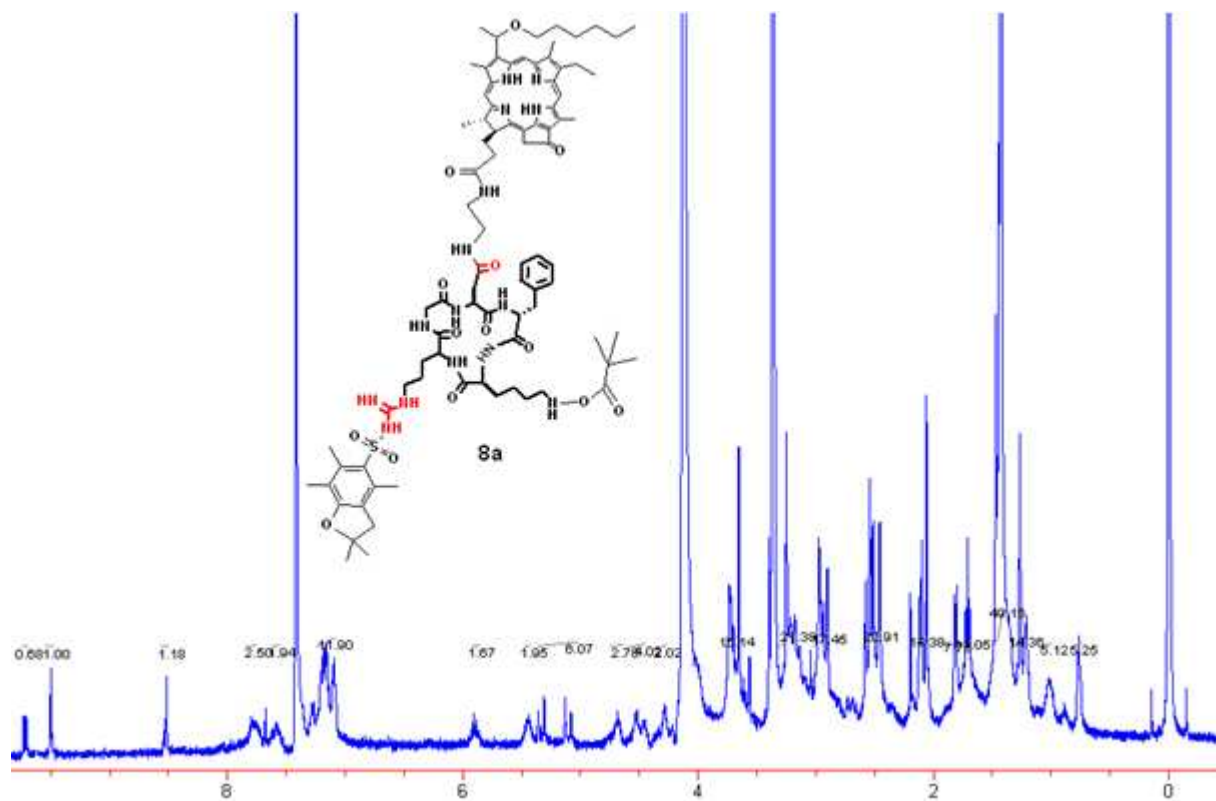
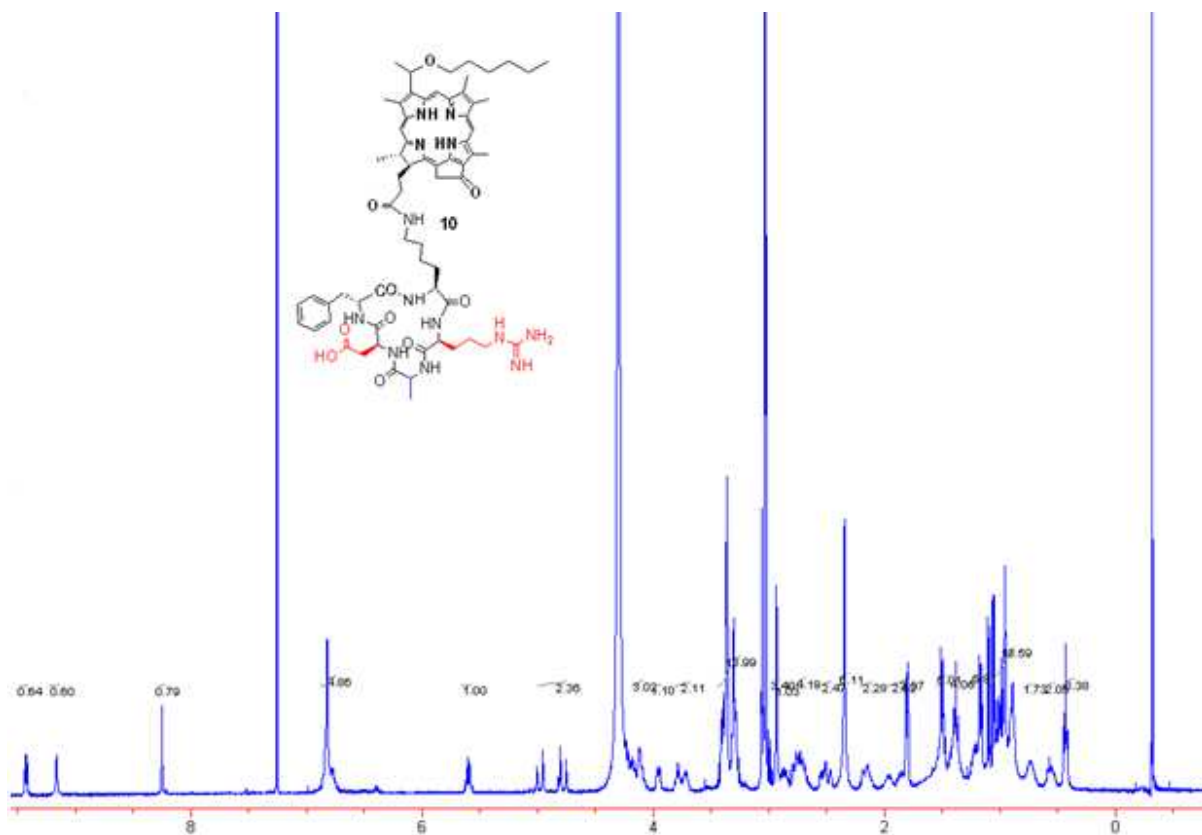
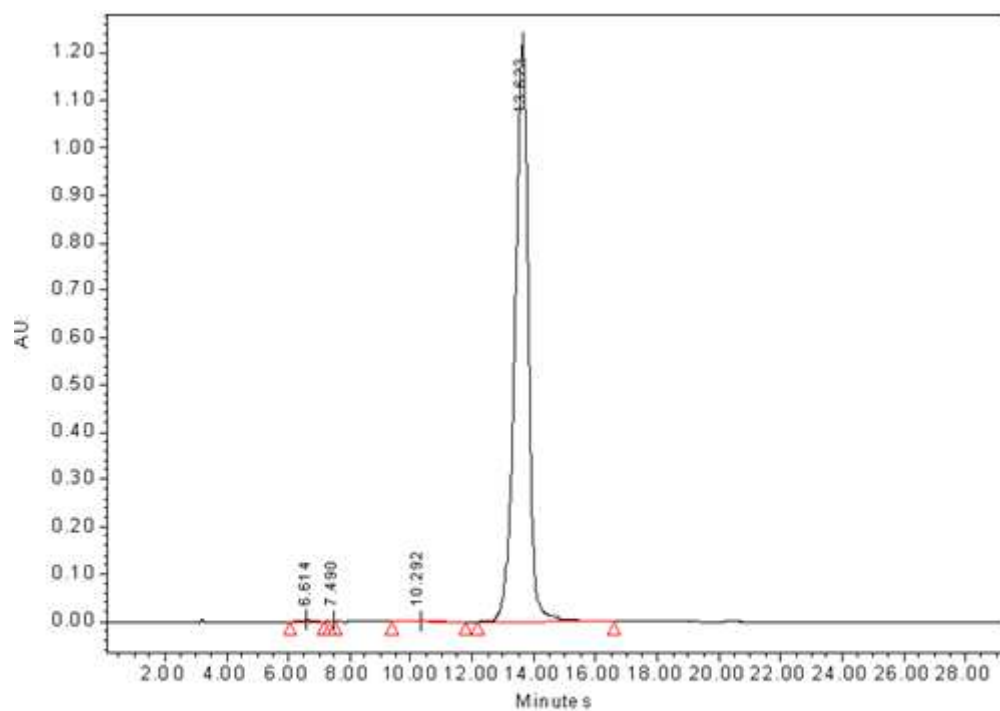


Figure 2

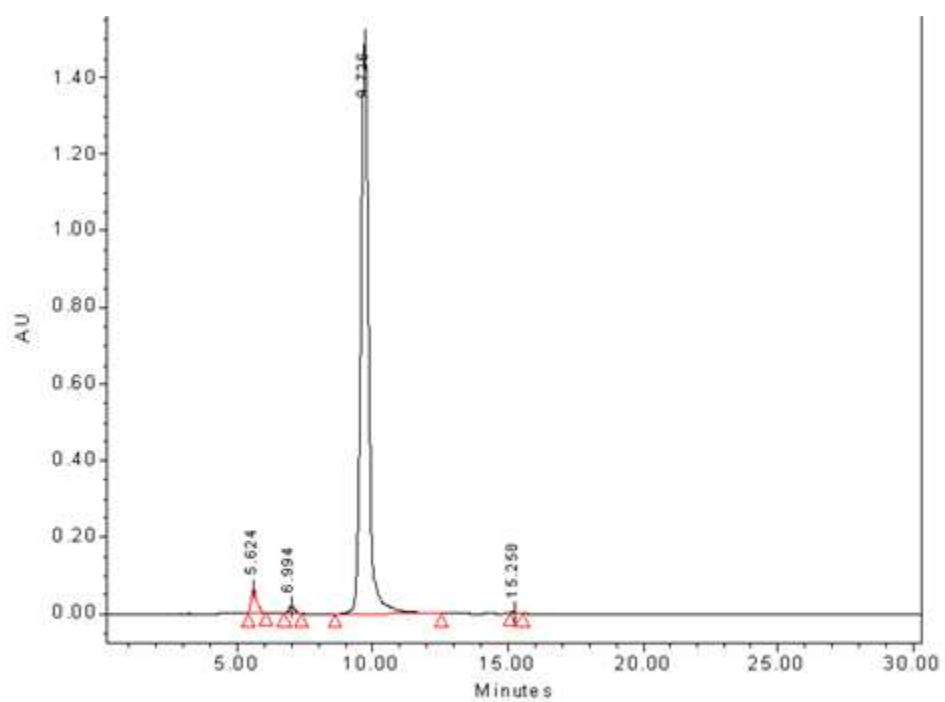






HPLC Chromatogram of Compound 8a

Figure 7



HPLC Chromatogram of Compound 10

Figure 8

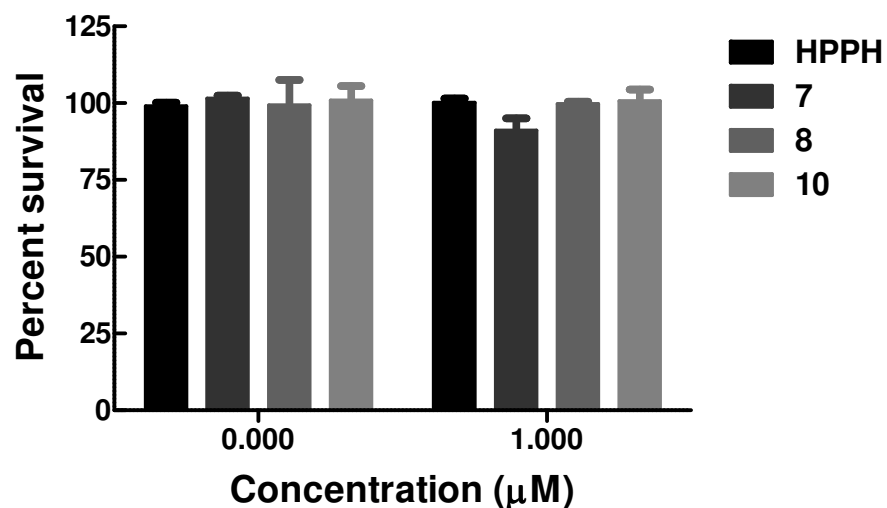


Figure 9: *In vitro* photosensitizing efficacy of HPPH and its peptide conjugates **7**, **8** and **10** at 0 (no photosensitizer) and 1 µM concentration under dark conditions (not exposed to light)

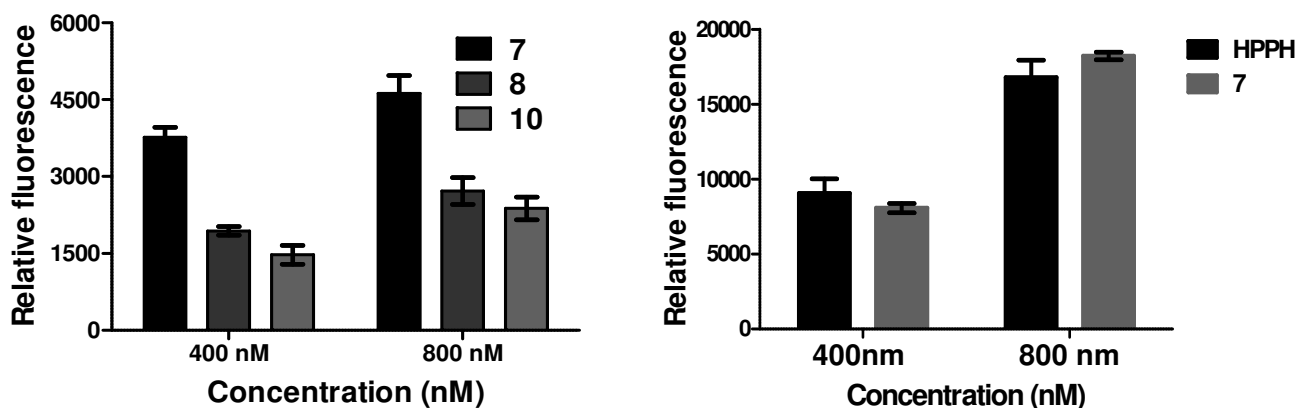


Figure 10: *In vitro* uptake of HPPH and the corresponding peptide conjugates **7**, **8** and **10** in two concentrations (400 nM and 800 nM) in U87 cells at **(A)** 4h and **(B)** Uptake of HPPH and conjugate **7** in two concentrations (400 and 800nm) in U87 cells 2h post-incubation, measured by flow cytometry.

7

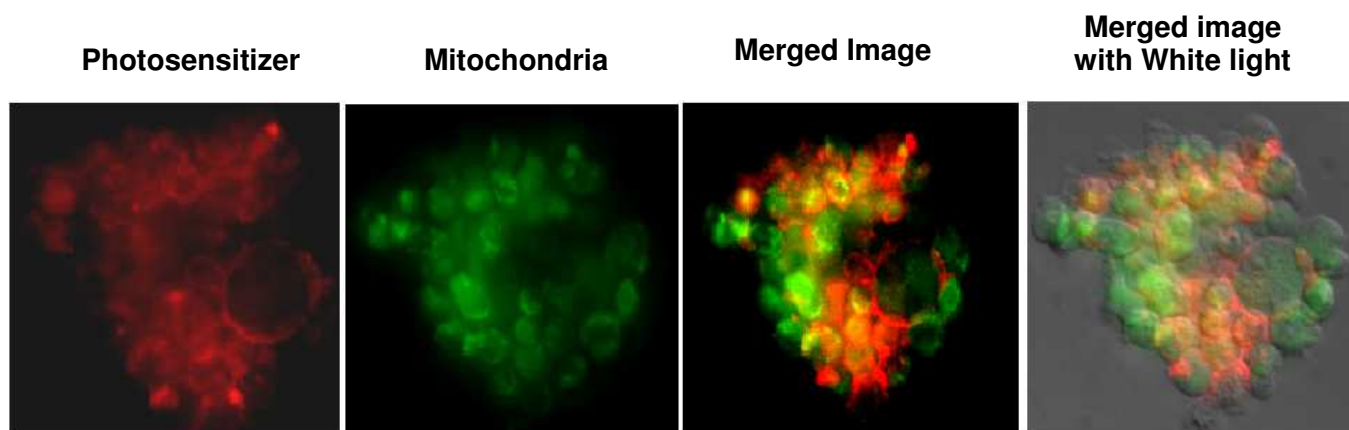


Figure 11: Enlarged image showing localization of HPPH-cRGD conjugate **7** in 4T1 cells. There is visible localization in the cell membrane post incubation with compound **7**.