

Figure e-2

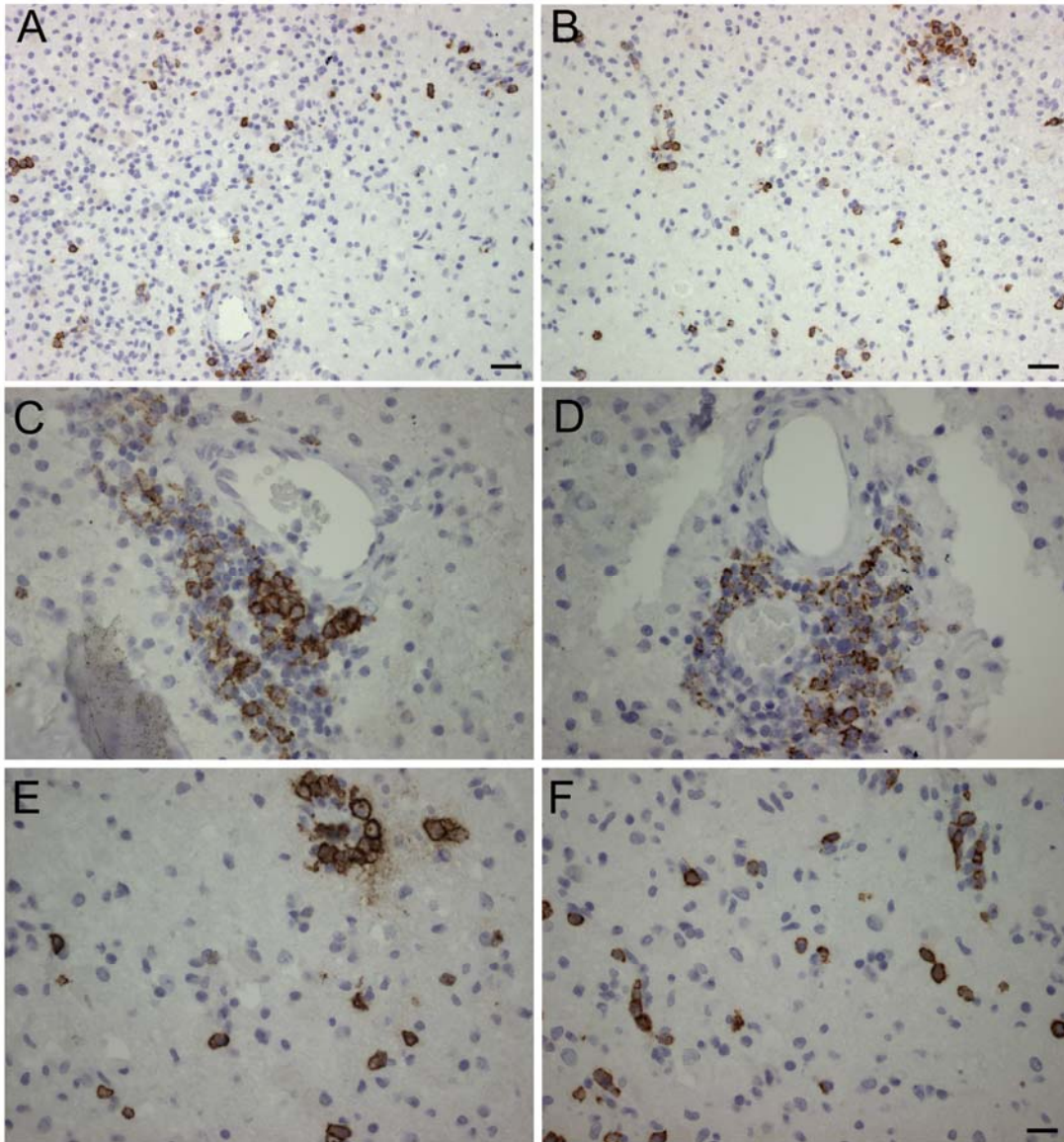


Figure e-2: CD138+ cells in brain of patients with anti-NMDAR encephalitis

Low magnification (A, B) and high magnification (C-F) photographs showing infiltrates of CD138+ cells (plasma cells/plasmablasts) in brain of patient #3. Note that CD138+ cells are in

perivascular (A-D) as well as interstitial spaces (A, B, E, F). Scale in A and B = 40 μm , Scale in C-F = 20 μm .