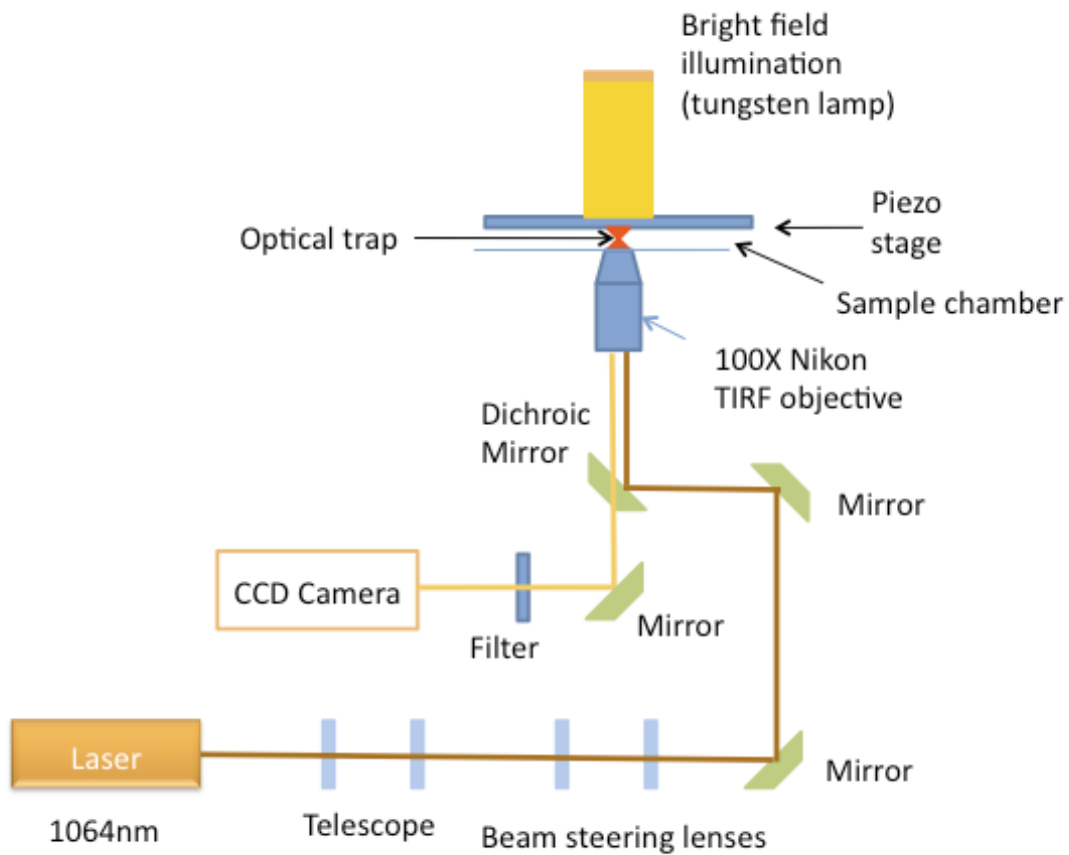


Supporting Information

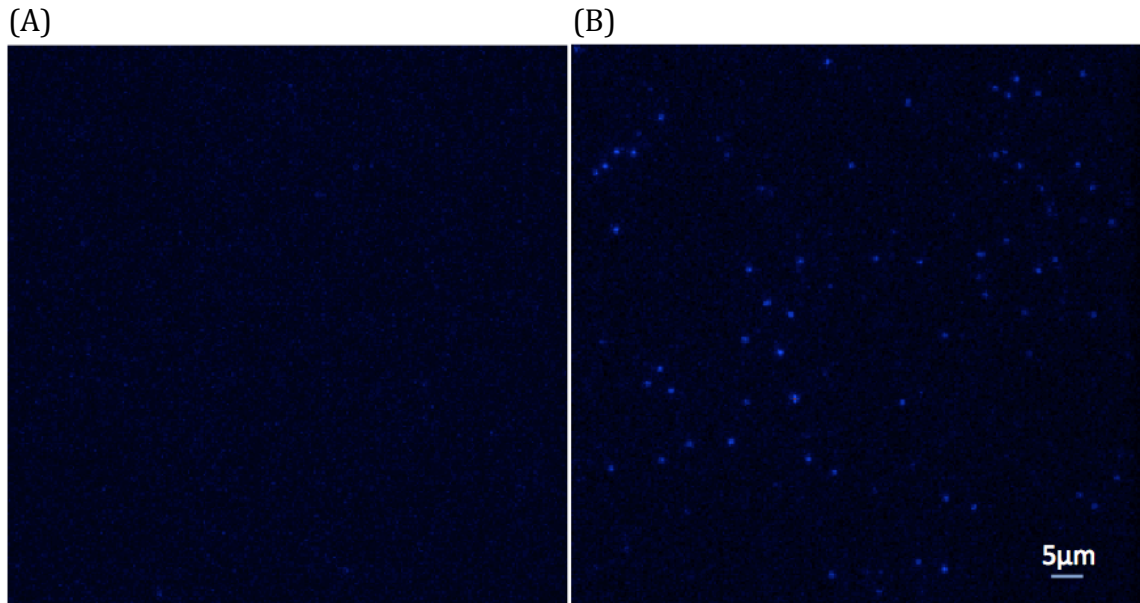
Interaction strengths between the ribosome and tRNA at various steps of translocation

Chen-Yu Liu, Mohd Tanvir Qureshi and Tae-Hee Lee

Schematic drawing of the optical trap setup used for the rupture force measurements



A typical fluorescence image of surface immobilized ribosome complexes under the experimental conditions



(A) A typical background fluorescence image before immobilizing the ribosome complexes on the surface.

(B) A typical fluorescence image of surface-immobilized ribosome complexes showing ~ 1 complex / $8 \times 8 \mu\text{m}^2$ surface area. The fluorescence is from Cy3 labeled fMet-tRNA^{fMet} within the complex as previously published¹.

Reference

(1) Mishra, P.; Qureshi, M. T.; Ren, W.; Lee, T.-H. Codon Dependent Fluctuations of tRNA Monitored with Fluorescence Polarization *Biophys J* **2010**, *99*, 3849-58.