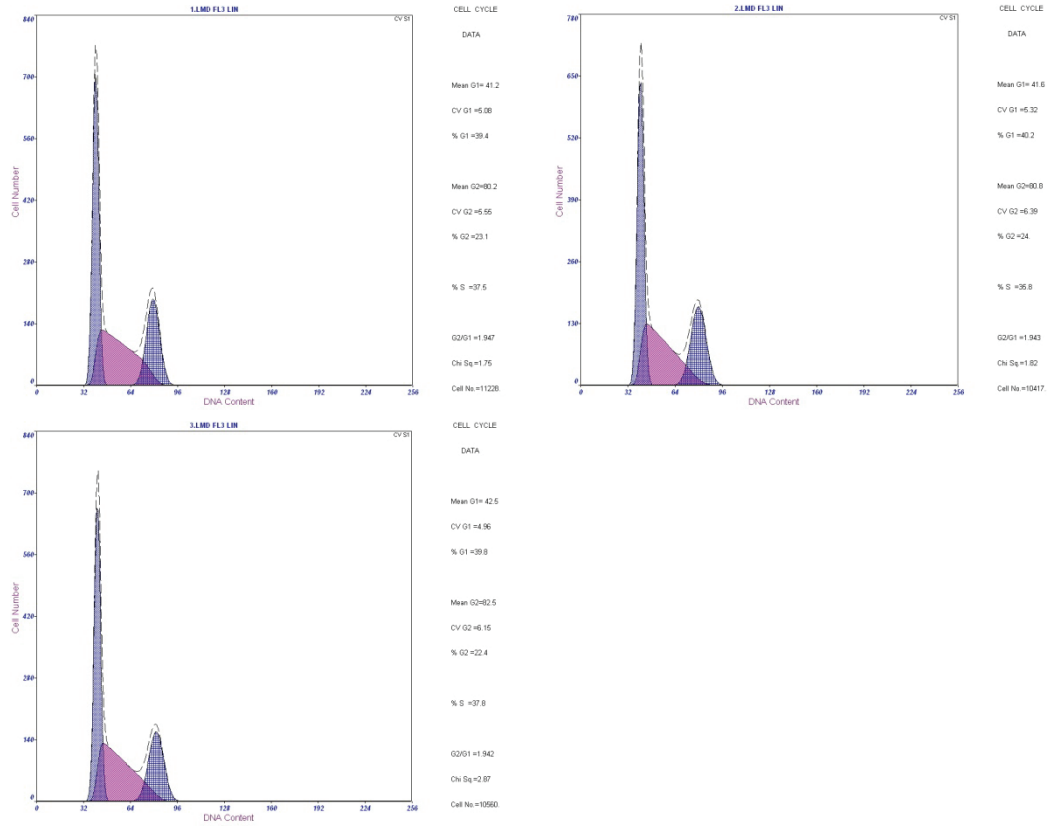


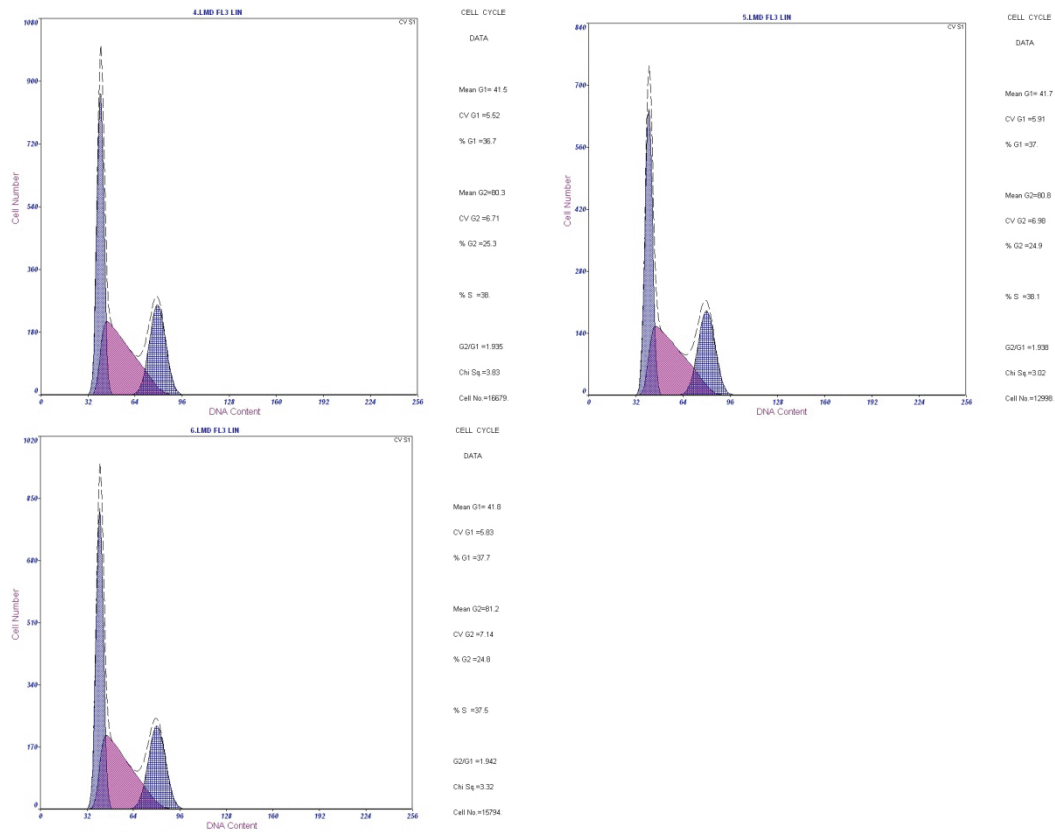
**Figure S3**

**A. Original data of flow cytometry analysis of GA treated samples**

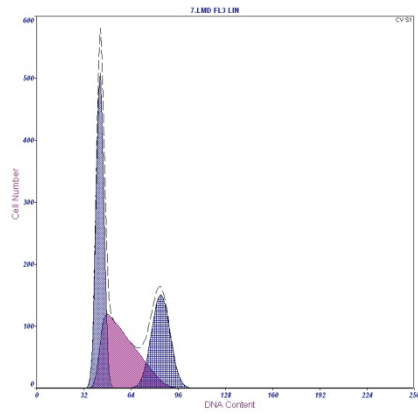
Untreated



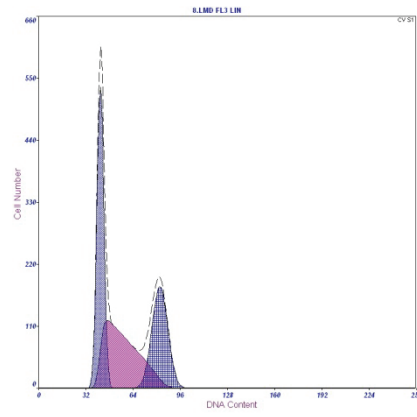
DMSO 1h



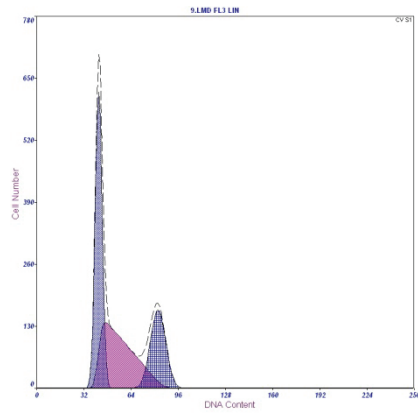
### GA 1h



CELL CYCLE  
DATA  
Mean G1= 43.9  
CV G1 =5.82  
% G1 =37.3  
Mean G2=85  
CV G2 =7.29  
% G2 =26.9  
% S =35.8  
G2/G1 =1.938  
Chi Sq =2.61  
Cell No =11449

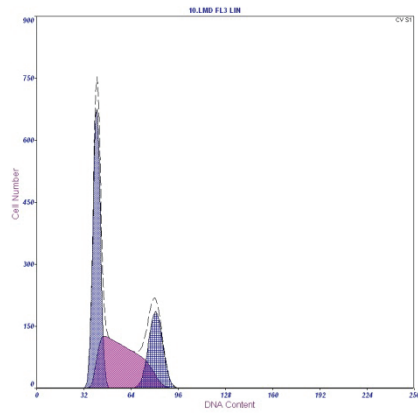


CELL CYCLE  
DATA  
Mean G1= 42.8  
CV G1 =5.38  
% G1 =35.4  
Mean G2=83.1  
CV G2 =6.4  
% G2 =27.5  
% S =37  
G2/G1 =1.941  
Chi Sq =3.17  
Cell No =11121

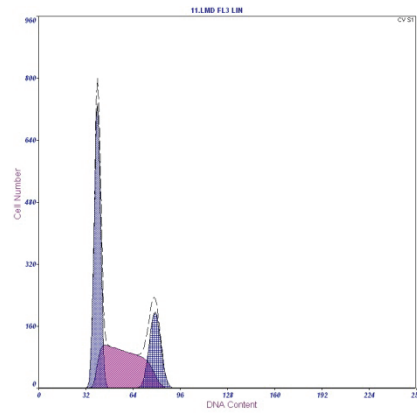


CELL CYCLE  
DATA  
Mean G1= 43  
CV G1 =5.41  
% G1 =39.2  
Mean G2=83.2  
CV G2 =6.19  
% G2 =22.9  
% S =37.9  
G2/G1 =1.934  
Chi Sq =2.98  
Cell No =11552

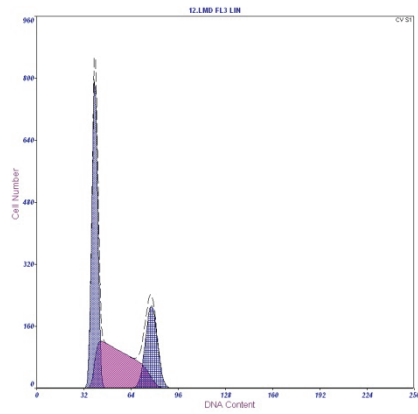
### DMSO 4h



CELL CYCLE  
DATA  
Mean G1= 41.6  
CV G1 =5.78  
% G1 =40.3  
Mean G2=81.6  
CV G2 =5.74  
% G2 =21.3  
% S =38.4  
G2/G1 =1.959  
Chi Sq =2.82  
Cell No =12305

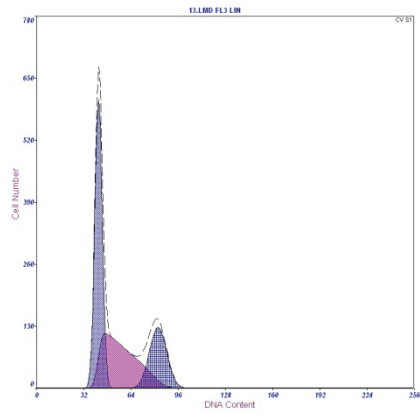


CELL CYCLE  
DATA  
Mean G1= 40.8  
CV G1 =5.15  
% G1 =41.1  
Mean G2=79.8  
CV G2 =4.78  
% G2 =19.9  
% S =39  
G2/G1 =1.959  
Chi Sq =4.13  
Cell No =11420

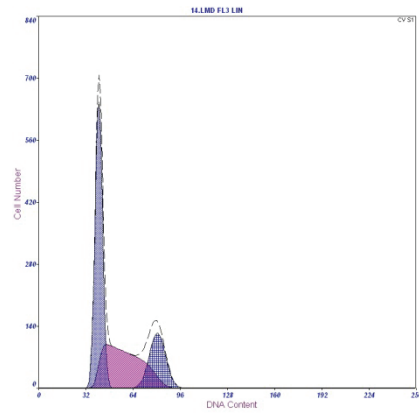


CELL CYCLE  
DATA  
Mean G1= 40.3  
CV G1 =4.84  
% G1 =40.6  
Mean G2=78.7  
CV G2 =4.91  
% G2 =22  
% S =37.4  
G2/G1 =1.951  
Chi Sq =3.52  
Cell No =11275

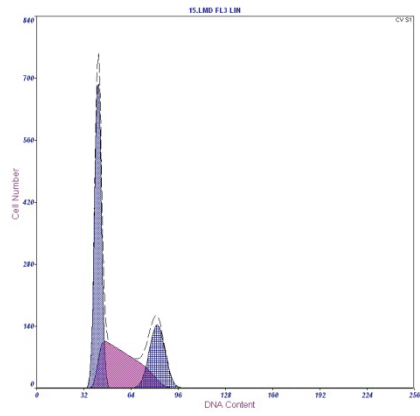
### GA 4h



CELL CYCLE  
DATA  
Mean G1= 42.9  
CV G1 =5.74  
% G1 =42.7  
Mean G2=83.2  
CV G2 =6.99  
% G2 =21.3  
% S =36  
G2/G1 =1.94  
Chi Sq =2.31  
Cell No =10277

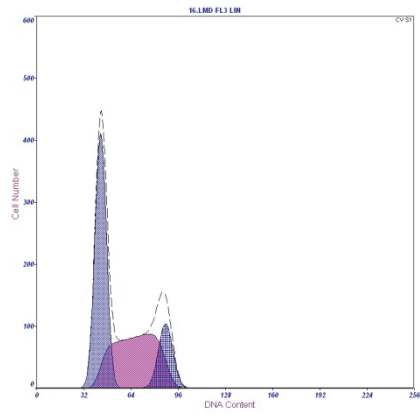


CELL CYCLE  
DATA  
Mean G1= 41.7  
CV G1 =5.91  
% G1 =45.3  
Mean G2=81.5  
CV G2 =6.66  
% G2 =19.1  
% S =36.5  
G2/G1 =1.962  
Chi Sq =1.99  
Cell No =10706

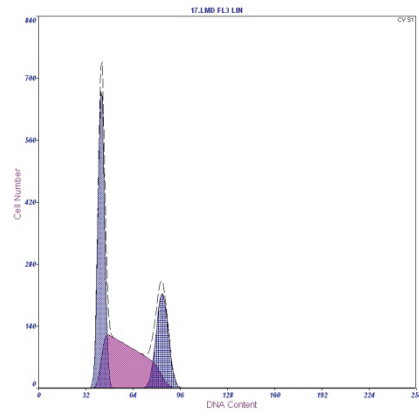


CELL CYCLE  
DATA  
Mean G1= 42.6  
CV G1 =5.16  
% G1 =43.9  
Mean G2=82.6  
CV G2 =6.28  
% G2 =21.3  
% S =34.7  
G2/G1 =1.942  
Chi Sq =2.84  
Cell No =10796

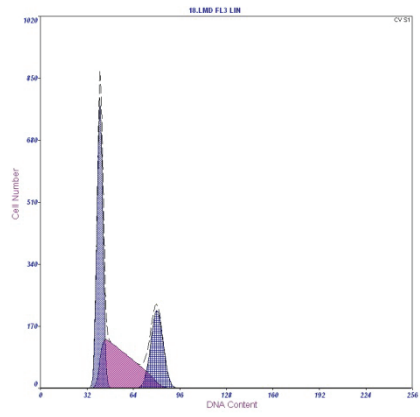
### DMSO 6h



CELL CYCLE  
DATA  
Mean G1= 44.4  
CV G1 =6.61  
% G1 =44.9  
Mean G2=88.4  
CV G2 =5.48  
% G2 =14.3  
% S =40.8  
G2/G1 =1.992  
Chi Sq =3.86  
Cell No =10296

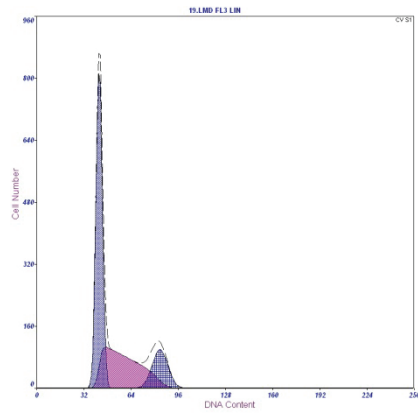


CELL CYCLE  
DATA  
Mean G1= 43.4  
CV G1 =4.87  
% G1 =38.1  
Mean G2=84.7  
CV G2 =4.7  
% G2 =22.6  
% S =39.3  
G2/G1 =1.962  
Chi Sq =3.83  
Cell No =11224

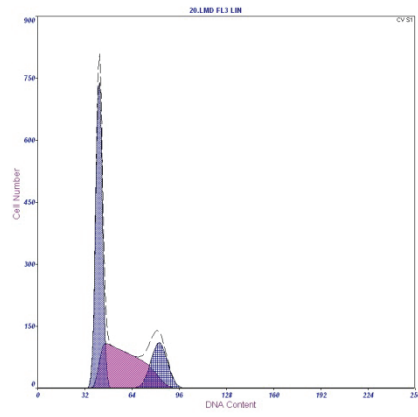


CELL CYCLE  
DATA  
Mean G1= 41.9  
CV G1 =4.84  
% G1 =40.6  
Mean G2=81.2  
CV G2 =5.14  
% G2 =23.4  
% S =36  
G2/G1 =1.936  
Chi Sq =4.59  
Cell No =11296

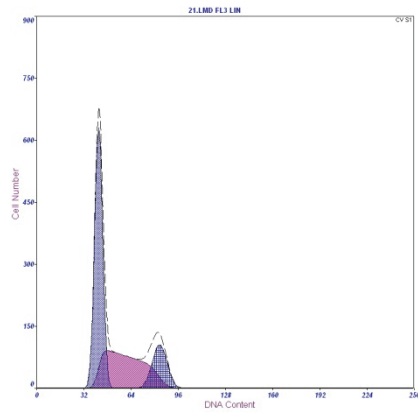
### GA 6h



CELL CYCLE  
DATA  
Mean G1= 43.4  
CV G1 =4.87  
% G1 =43.5  
Mean G2=84.5  
CV G2 =6.23  
% G2 =14.9  
% S =35.6  
G2/G1 =1.95  
Chi Sq =2.68  
Cell No =10222

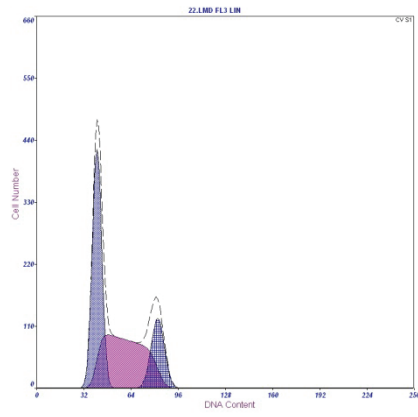


CELL CYCLE  
DATA  
Mean G1= 42.6  
CV G1 =5.09  
% G1 =45.4  
Mean G2=83.2  
CV G2 =6.57  
% G2 =16.9  
% S =37.7  
G2/G1 =1.954  
Chi Sq =2.24  
Cell No =10724

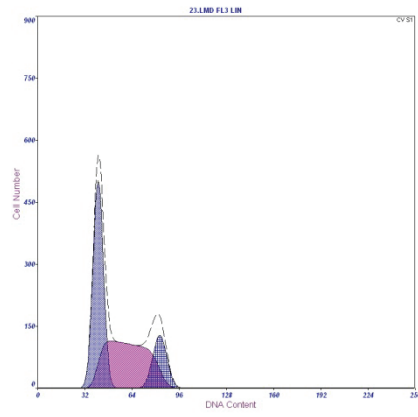


CELL CYCLE  
DATA  
Mean G1= 43  
CV G1 =6.23  
% G1 =48.0  
Mean G2=84.3  
CV G2 =5.89  
% G2 =15.1  
% S =36.1  
G2/G1 =1.961  
Chi Sq =4.99  
Cell No =10300

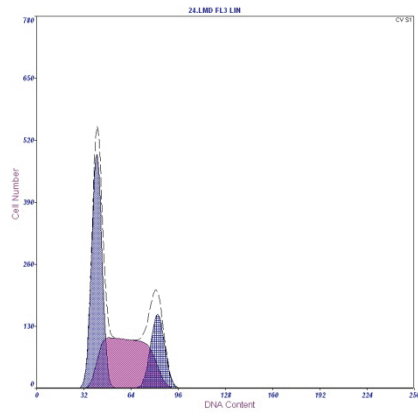
### DMSO 8h



CELL CYCLE  
DATA  
Mean G1= 41.9  
CV G1 =7.54  
% G1 =40.7  
Mean G2=83  
CV G2 =6.37  
% G2 =16.8  
% S =42.5  
G2/G1 =1.982  
Chi Sq =7.38  
Cell No =9829

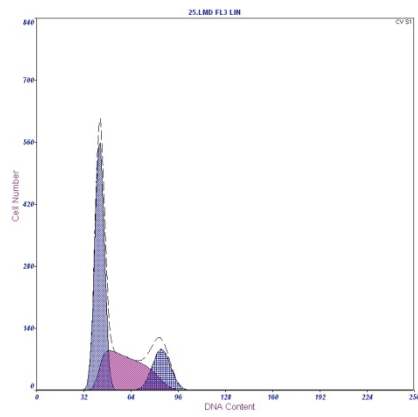


CELL CYCLE  
DATA  
Mean G1= 42  
CV G1 =8.24  
% G1 =42.2  
Mean G2=83.7  
CV G2 =6.61  
% G2 =14.6  
% S =43.2  
G2/G1 =1.994  
Chi Sq =8.83  
Cell No =12873

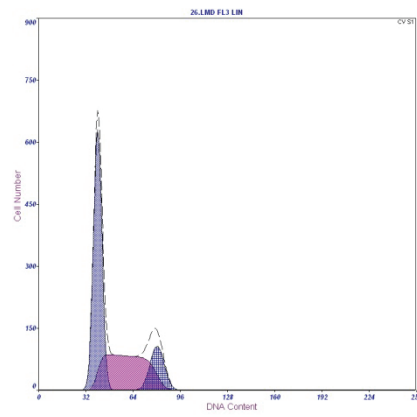


CELL CYCLE  
DATA  
Mean G1= 41.7  
CV G1 =8.95  
% G1 =40.9  
Mean G2=82.9  
CV G2 =6.53  
% G2 =17.6  
% S =41.5  
G2/G1 =1.987  
Chi Sq =6.38  
Cell No =12290

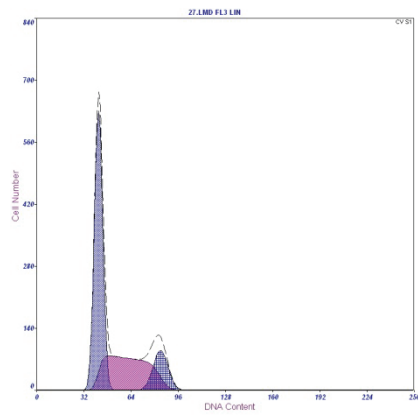
## GA 8h



CELL CYCLE  
DATA  
Mean G1= 43.6  
CV G1 =7.18  
% G1 =49.9  
Mean G2=85.5  
CV G2 =7.13  
% G2 =16  
% S =34  
G2/G1 =1.959  
Chi Sq=4.91  
Cell No =10441



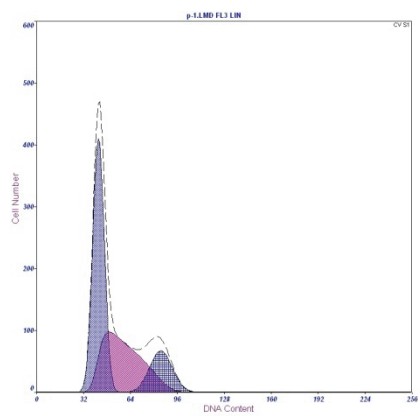
CELL CYCLE  
DATA  
Mean G1= 41  
CV G1 =8.89  
% G1 =42.2  
Mean G2=81.3  
CV G2 =5.84  
% G2 =14.1  
% S =36.8  
G2/G1 =1.983  
Chi Sq=7.33  
Cell No =11146



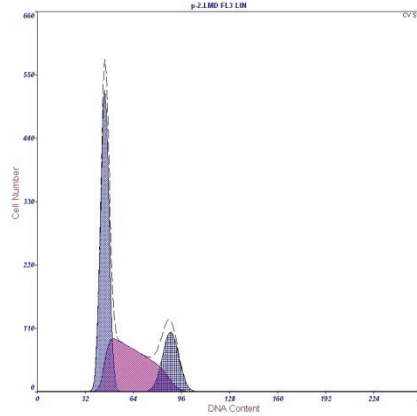
CELL CYCLE  
DATA  
Mean G1= 42.9  
CV G1 =6.5  
% G1 =51.6  
Mean G2=84.9  
CV G2 =5.84  
% G2 =13.1  
% S =35.2  
G2/G1 =1.978  
Chi Sq=5.31  
Cell No =10002

## B. Original data of flow cytometry analysis of siRNA treated samples

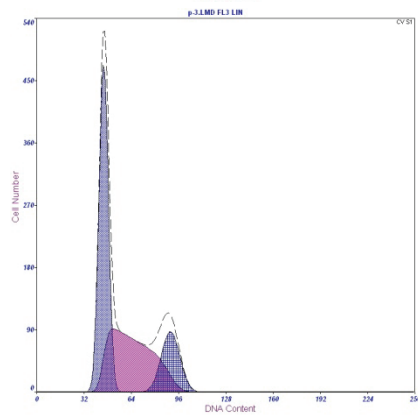
### Control



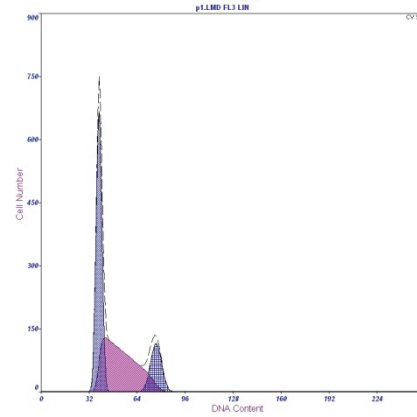
CELL CYCLE  
DATA  
Mean G1= 43.2  
CV G1 =8.94  
% G1 =47.3  
Mean G2=85.7  
CV G2 =8.94  
% G2 =15.3  
% S =37.4  
G2/G1 =1.982  
Chi Sq=3.25  
Cell No =10550



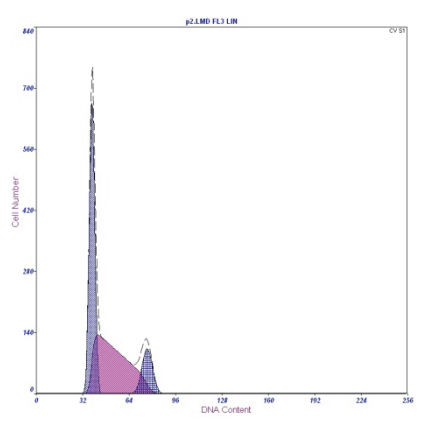
CELL CYCLE  
DATA  
Mean G1= 45.9  
CV G1 =5.92  
% G1 =44.6  
Mean G2=89.8  
CV G2 =5.92  
% G2 =17.3  
% S =38.1  
G2/G1 =1.955  
Chi Sq=2.6  
Cell No =10364



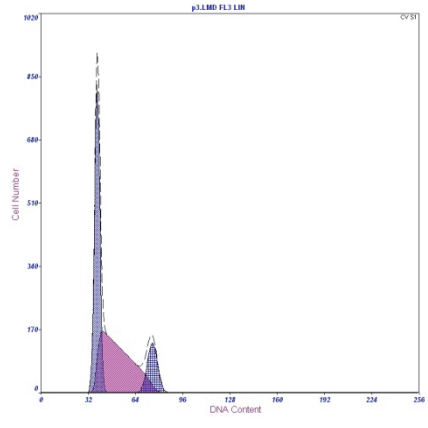
CELL CYCLE  
DATA  
Mean G1= 46.3  
CV G1 =6.76  
% G1 =44.2  
Mean G2=91.5  
CV G2 =6.76  
% G2 =16.2  
% S =39.6  
G2/G1 =1.977  
Chi Sq=2.7  
Cell No =10826



CELL CYCLE  
DATA  
Mean G1= 39.6  
CV G1 =4.74  
% G1 =42.4  
Mean G2=77.5  
CV G2 =4.74  
% G2 =14.1  
% S =43.6  
G2/G1 =1.96  
Chi Sq=5.68  
Cell No =10434

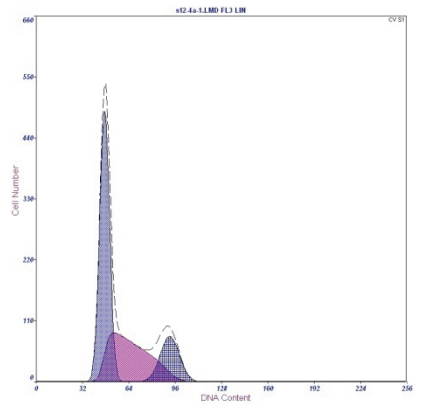


CELL CYCLE  
DATA  
Mean G1=39.4  
CV G1=4.6  
% G1=41.4  
Mean G2=77.4  
CV G2=4.6  
% G2=12.2  
% S=46.4  
G2/G1=1.962  
Ch S<sub>q</sub>=2.64  
Cell No=10236

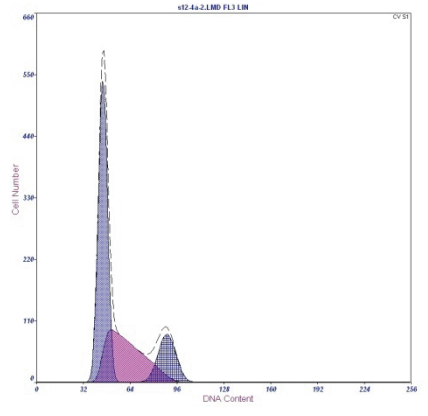


CELL CYCLE  
DATA  
Mean G1=39.1  
CV G1=4.46  
% G1=41.2  
Mean G2=76.4  
CV G2=4.46  
% G2=13.1  
% S=45.8  
G2/G1=1.956  
Ch S<sub>q</sub>=4.66  
Cell No=12000

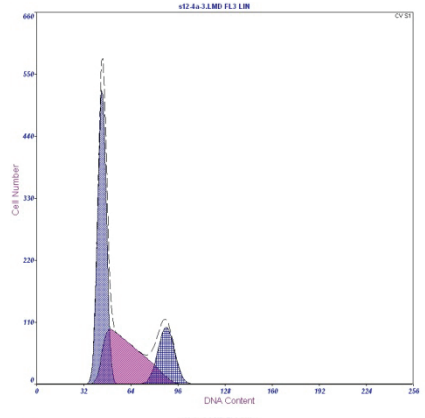
siRNA SUMO1



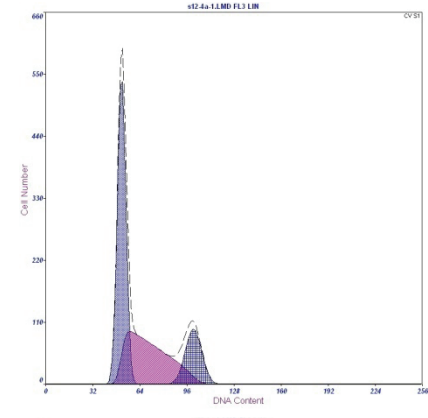
CELL CYCLE  
DATA  
Mean G1=48.3  
CV G1=6.96  
% G1=49.2  
Mean G2=93.2  
CV G2=6.96  
% G2=16  
% S=34.8  
G2/G1=1.932  
Ch S<sub>q</sub>=2.94  
Cell No=10116



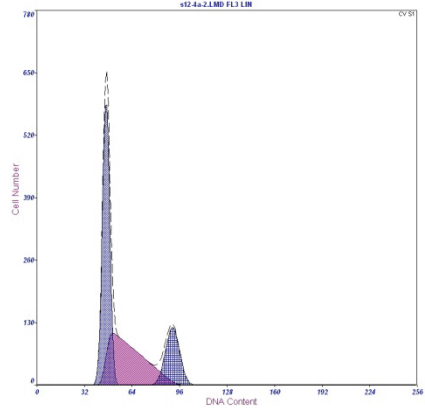
CELL CYCLE  
DATA  
Mean G1=48.3  
CV G1=6.66  
% G1=50.9  
Mean G2=90.1  
CV G2=6.66  
% G2=15.7  
% S=33.4  
G2/G1=1.943  
Ch S<sub>q</sub>=2.38  
Cell No=10105



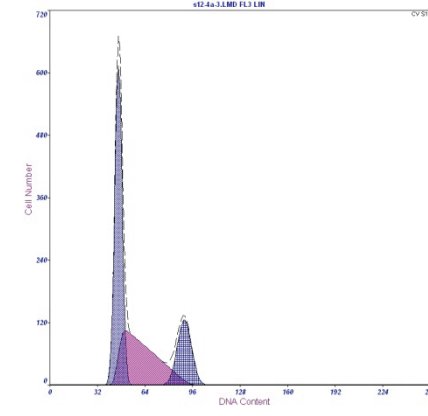
CELL CYCLE  
DATA  
Mean G1=45.4  
CV G1=6.19  
% G1=48.5  
Mean G2=89  
CV G2=6.19  
% G2=17.6  
% S=36.9  
G2/G1=1.961  
Ch S<sub>q</sub>=3.07  
Cell No=10099



CELL CYCLE  
DATA  
Mean G1=52.6  
CV G1=5.49  
% G1=48.6  
Mean G2=101  
CV G2=5.49  
% G2=18.2  
% S=37.2  
G2/G1=1.928  
Ch S<sub>q</sub>=3.71  
Cell No=10022

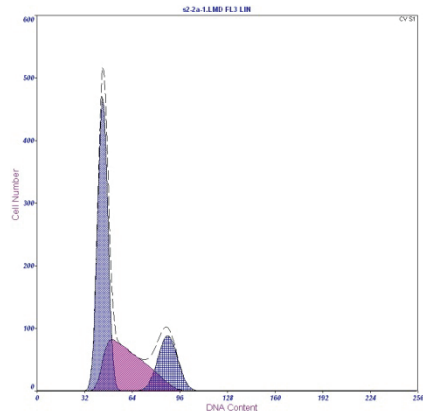


CELL CYCLE  
DATA  
Mean G1=47.5  
CV G1=5.03  
% G1=46.3  
Mean G2=92.3  
CV G2=5.03  
% G2=17.7  
% S=37  
G2/G1=1.941  
Ch S<sub>q</sub>=4.87  
Cell No=10282

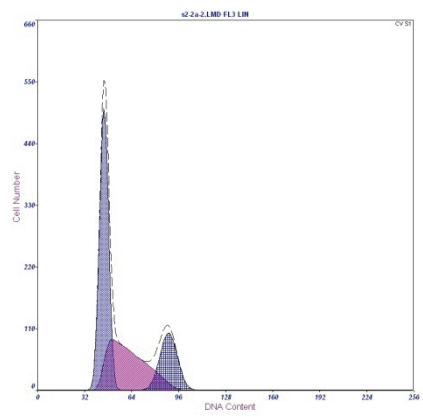


CELL CYCLE  
DATA  
Mean G1=47.1  
CV G1=5.16  
% G1=46.3  
Mean G2=91.5  
CV G2=5.16  
% G2=18.4  
% S=36.4  
G2/G1=1.942  
Ch S<sub>q</sub>=4.23  
Cell No=10323

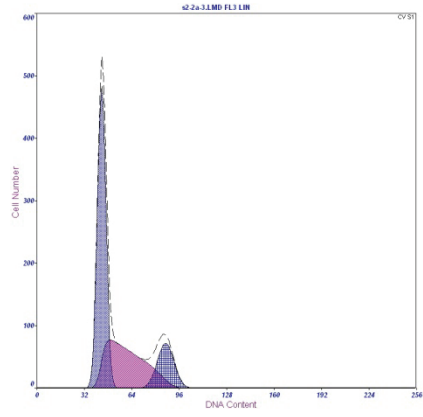
siRNA SUMO2/3



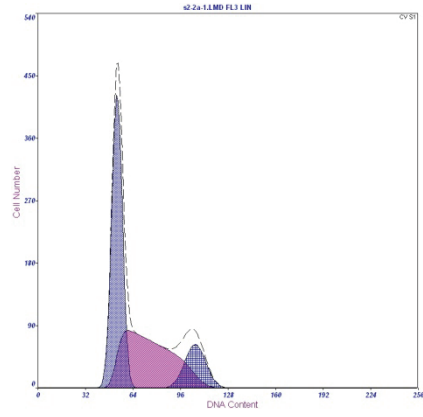
CELL CYCLE  
DATA  
Mean G1= 45.1  
CV G1 =7.31  
% G1 =49.6  
Mean G2=90.8  
CV G2 =7.31  
% G2 =18.3  
% S =32  
G2/G1 =1.967  
Ch Sg =3  
Cell No =10388



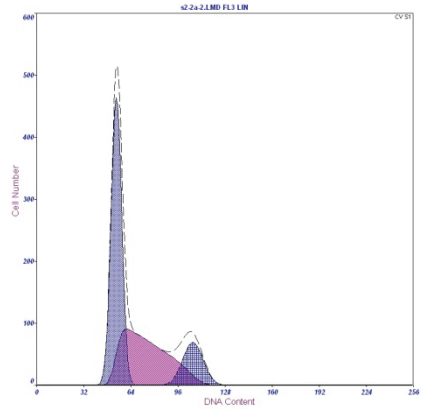
CELL CYCLE  
DATA  
Mean G1= 46.2  
CV G1 =6.62  
% G1 =47.3  
Mean G2=90.1  
CV G2 =6.62  
% G2 =18.8  
% S =33.9  
G2/G1 =1.951  
Ch Sg =3.34  
Cell No =10100



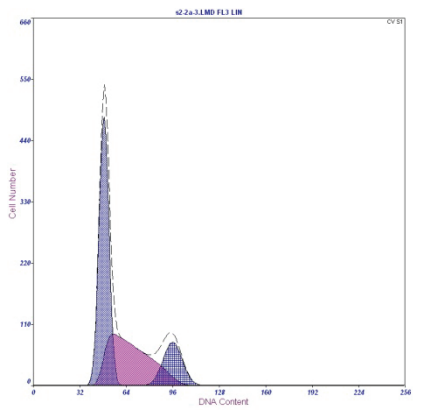
CELL CYCLE  
DATA  
Mean G1= 44.7  
CV G1 =6.32  
% G1 =50.5  
Mean G2=87.8  
CV G2 =6.32  
% G2 =14.7  
% S =34.9  
G2/G1 =1.964  
Ch Sg =2.94  
Cell No =8016



CELL CYCLE  
DATA  
Mean G1= 54.2  
CV G1 =6.55  
% G1 =46.7  
Mean G2=107  
CV G2 =6.55  
% G2 =13.4  
% S =40.9  
G2/G1 =1.971  
Ch Sg =3.13  
Cell No =10267



CELL CYCLE  
DATA  
Mean G1= 55.2  
CV G1 =6.45  
% G1 =47.6  
Mean G2=107  
CV G2 =6.45  
% G2 =13.7  
% S =38.7  
G2/G1 =1.942  
Ch Sg =4.16  
Cell No =10292



CELL CYCLE  
DATA  
Mean G1= 49.6  
CV G1 =6.74  
% G1 =48.1  
Mean G2=96.9  
CV G2 =6.74  
% G2 =15.1  
% S =36.8  
G2/G1 =1.953  
Ch Sg =3.01  
Cell No =10273