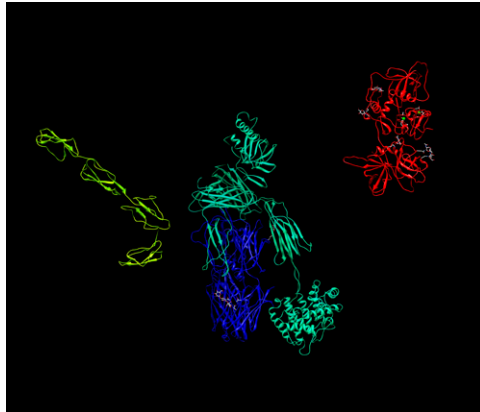


# Supporting Information

Roversi et al. 10.1073/pnas.1102167108



**Movie S1.** Assembly of the ternary complex. The movie shows the cofactor approaching the C3b molecule and forming the interaction surface for factor I (fi). Once fi docks onto the cofactor, the first cleavage occurs.

[Movie S1](#)

## Other Supporting Information Files

[SI Appendix \(PDF\)](#)