

Total Synthesis of (–)-Nakadomarin A

Mark G. Nilson and Raymond L. Funk*

*Department of Chemistry, Pennsylvania State University,
University Park, PA 16802*

rjf@chem.psu.edu

Supporting Information: ^1H and ^{13}C Spectra

^1H and ^{13}C Spectra of New Compounds	S-2 – S-35
^1H and ^{13}C Spectra of Synthetic Nakadomarin A	S-36 – S-37
Comparison of ^1H Spectra: Synthetic Nakadomarin A by Nishida, Funk, Kerr and Dixon	S-38 – S-39

Hz

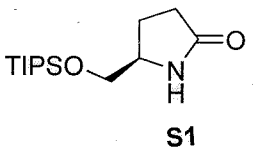
Integral

ppm

2904.87

2315.25

1496.80
1492.92
1487.01
1483.12
1420.44
1412.44
1410.68
1402.67
949.27
947.55
942.22
939.28
932.74
931.30
880.51
872.72
867.44
447.72
441.94
439.10
433.20
428.59
422.50
420.04
417.54
414.83
411.80



0.898

0.993
1.013
1.000

2.016
1.019

1.014

25.588

Current Data Parameters
NAME 071908mgn
EXPNO 123208
PROCNO 1

F2 - Acquisition Parameters
Date_ 20080719
Time 16.30
INSTRUM spect
PROBHD 5 mm BBI 1H-B
PULPROG zg30
TD 65536
SOLVENT CDC13
NS 16
DS 2
SWH 8278.146 Hz
FIDRES 0.126314 Hz
AQ 3.9584243 sec
RG 406.4
DW 60.400 usec
DE 6.00 usec
TE 300.0 K
D1 1.00000000 sec

===== CHANNEL f1 =====
NUC1 1H
P1 6.45 usec
PL1 0.00 dB
SF01 400.1324710 MHz

F2 - Processing parameters
SI 32768
SF 400.1300094 MHz
WDW no
SSB 0
LB 0.00 Hz
GB 0
PC 1.00

1D NMR plot parameters
CX 20.00 cm
F1P 10.000 ppm
F1 4001.30 Hz
F2P -0.500 ppm
F2 -200.07 Hz
PPMCM 0.52500 ppm/cm
HZCM 210.06825 Hz/cm

ppm

178.106

77.421

76.997

76.573

67.064

55.915

29.748

22.657

17.819

17.629

12.242

11.726



ppm

180

160

140

120

100

80

60

40

20

S-3

Current Data Parameters

NAME 071908mgn
 EXPNO 123213
 PROCNO 1

F2 - Acquisition Parameters

Date_ 20080719
 Time 17.47
 INSTRUM spect
 PROBHD 5 mm GNP 1H/1
 PULPROG zgpg30
 TD 65536
 SOLVENT CDC13
 NS 512
 DS 4
 SWH 18796.992 Hz
 FIDRES 0.286819 Hz
 AQ 1.7433076 sec
 RG 512
 DW 26.600 usec
 DE 6.00 usec
 TE 300.0 K
 D1 2.00000000 sec
 D11 0.03000000 sec
 D12 0.00002000 sec

===== CHANNEL f1 =====

NUC1 13C
 P1 5.40 usec
 PL1 -6.00 dB
 SF01 75.4106357 MHz

===== CHANNEL f2 =====

CPDPRG2 waltz16
 NUC2 1H
 PCPD2 115.00 usec
 PL2 0.00 dB
 PL12 20.00 dB
 PL13 20.00 dB
 SF02 299.8711995 MHz

F2 - Processing parameters

SI 32768
 SF 75.4023798 MHz
 WDW no
 SSB 0
 LB 0.00 Hz
 GB 0
 PC 1.40

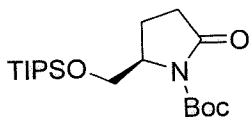
1D NMR plot parameters

CX 20.00 cm
 F1P 200.000 ppm
 F1 15080.48 Hz
 F2P 0.000 ppm
 F2 0.00 Hz
 PPMCM 10.00000 ppm/cm
 HZCM 754.02380 Hz/cm

Hz

2178.96

1590.26
 1258.62
 1254.92
 1211.69
 1207.59
 1201.53
 1197.41
 1140.82
 1138.49
 1130.73
 1128.39
 830.44
 812.96
 632.18
 630.33
 627.93
 624.62
 622.17
 617.81
 614.47
 470.16
 456.33
 336.90
 331.81
 329.69
 327.52
 322.46
 315.28
 311.31
 303.62



1.000
 0.999
 0.984
 1.124
 1.116
 1.897
 3.276
 6.768
 16.267

Current Data Parameters
 NAME 070808mgn
 EXPNO 12372
 PROCNO 1

F2 - Acquisition Parameters
 Date_ 20080708
 Time 16.49
 INSTRUM spect
 PROBHD 5 mm Multinu
 PULPROG zg30
 TD 24576
 SOLVENT CDC13
 NS 16
 DS 2
 SWH 6172.839 Hz
 FIDRES 0.251173 Hz
 AQ 1.9907060 sec
 RG 645.1
 DW 81.000 usec
 DE 6.00 usec
 TE 300.0 K
 D1 1.00000000 sec

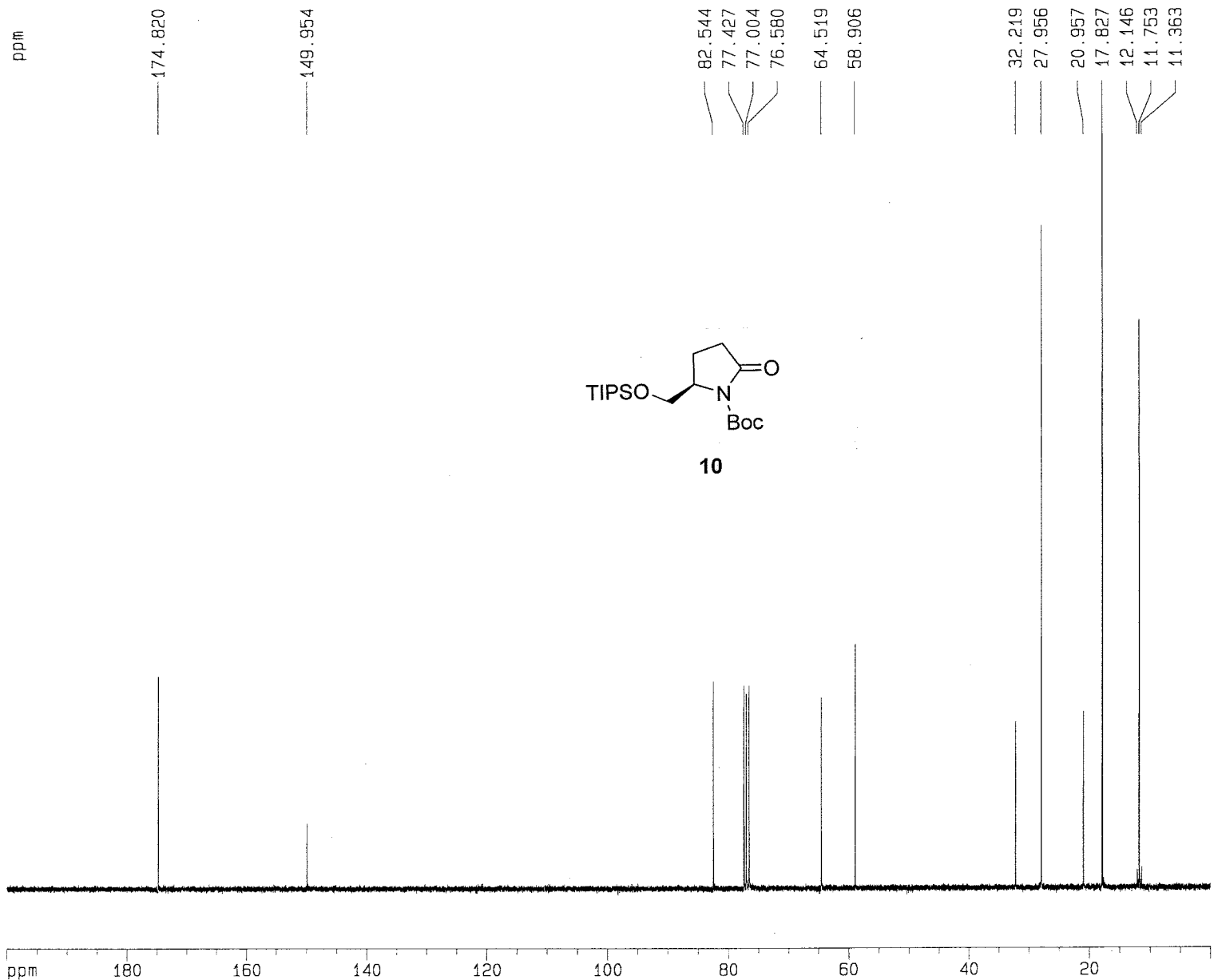
===== CHANNEL f1 =====
 NUC1 1H
 P1 9.60 usec
 PL1 -6.00 dB
 SF01 300.1318534 MHz

F2 - Processing parameters
 SI 32768
 SF 300.1300062 MHz
 WDW no
 SSB 0
 LB 0.00 Hz
 GB 0
 PC 1.00

1D NMR plot parameters
 CX 20.00 cm
 F1P 10.000 ppm
 F1 3001.30 Hz
 F2P -0.500 ppm
 F2 -150.07 Hz
 PPMCM 0.52500 ppm/cm
 HZCM 157.56825 Hz/cm

Integral

ppm



Current Data Parameters
 NAME 071908mgn
 EXPNO 123713
 PROCNO 1

F2 - Acquisition Parameters
 Date_ 20080719
 Time 17.33
 INSTRUM spect
 PROBHD 5 mm Multinu
 PULPROG zgpg30
 TD 65536
 SOLVENT CDC13
 NS 1024
 DS 4
 SWH 18832.393 Hz
 FIDRES 0.287360 Hz
 AQ 1.7400308 sec
 RG 16384
 DW 26.550 usec
 DE 6.00 usec
 TE 300.0 K
 D1 2.0000000 sec
 d11 0.0300000 sec
 d12 0.0000200 sec

===== CHANNEL f1 =====
 NUC1 13C
 P1 11.80 usec
 PL1 0.00 dB
 SF01 75.4760200 MHz

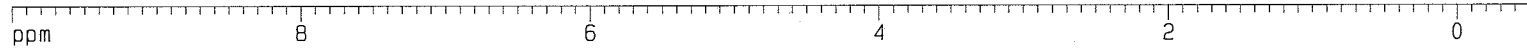
===== CHANNEL f2 =====
 CPDPRG2 waltz16
 NUC2 1H
 PCPD2 110.00 usec
 PL2 0.00 dB
 PL12 17.50 dB
 PL13 17.50 dB
 SF02 300.1312005 MHz

F2 - Processing parameters
 SI 32768
 SF 75.4677549 MHz
 WDW no
 SSB 0
 LB 0.00 Hz
 GB 0
 PC 1.40

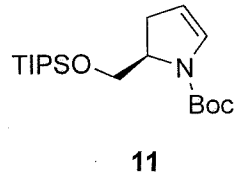
1D NMR plot parameters
 CX 20.00 cm
 F1P 200.000 ppm
 F1 15093.55 Hz
 F2P 0.000 ppm
 F2 0.00 Hz
 PPMCM 10.00000 ppm/cm
 HZCM 754.67761 Hz/cm

Hz

Integral



2905.06
 2613.16
 2559.13
 1990.13
 1955.79
 1687.24
 1655.78
 1535.92
 1528.11
 1437.94
 1429.84
 1109.52
 1091.63
 1082.52
 621.74
 588.84
 572.98
 501.94
 479.68
 451.62
 443.28
 436.19
 421.19



0.912
 0.938
 0.977
 1.597
 0.477
 2.000
 9.621
 22.642

Current Data Parameters
 NAME 071908mgn
 EXPNO 123908
 PROCNO 1

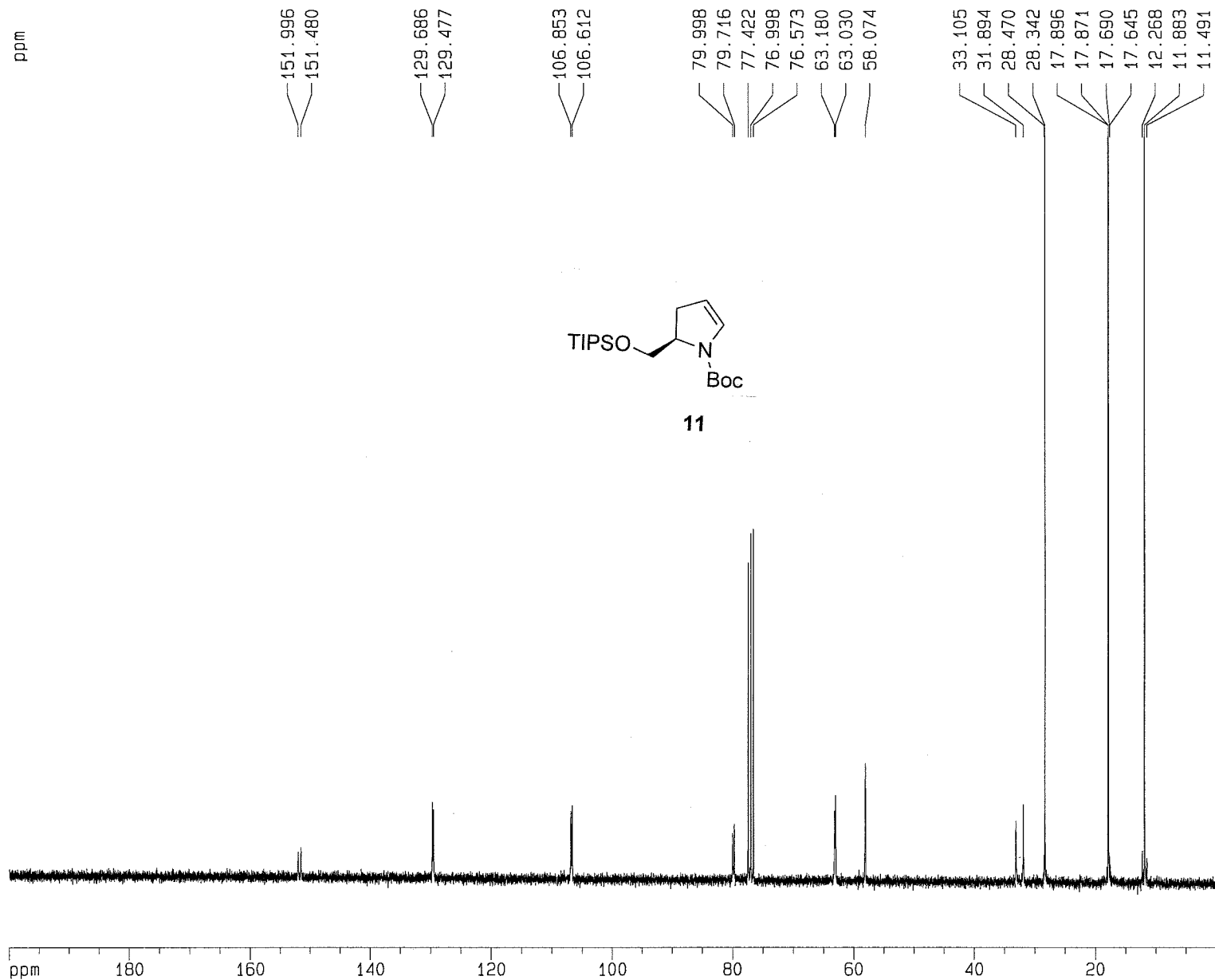
F2 - Acquisition Parameters
 Date_ 20080719
 Time 15.10
 INSTRUM spect
 PROBHD 5 mm BBI 1H-B
 PULPROG zg30
 TD 65536
 SOLVENT CDC13
 NS 16
 DS 2
 SWH 8278.146 Hz
 FIDRES 0.126314 Hz
 AQ 3.9584243 sec
 RG 362
 DW 60.400 usec
 DE 6.00 usec
 TE 300.0 K
 D1 1.00000000 sec

===== CHANNEL f1 =====
 NUC1 1H
 P1 6.45 usec
 PL1 0.00 dB
 SF01 400.1324710 MHz

F2 - Processing parameters
 SI 32768
 SF 400.1300089 MHz
 WDW no
 SSB 0
 LB 0.00 Hz
 GB 0
 PC 1.00

1D NMR plot parameters
 CX 20.00 cm
 F1P 10.000 ppm
 F1 4001.30 Hz
 F2P -0.500 ppm
 F2 -200.07 Hz
 PPMCM 0.52500 ppm/cm
 HZCM 210.06825 Hz/cm

ppm



Current Data Parameters
 NAME 071908mgn
 EXPNO 123913
 PROCNO 1

F2 - Acquisition Parameters

Date_ 20080719
 Time 17.05
 INSTRUM spect
 PROBHD 5 mm GNP 1H/1
 PULPROG zgpg30
 TD 65536
 SOLVENT CDC13
 NS 1024
 DS 4
 SWH 18796.992 Hz
 FIDRES 0.286819 Hz
 AQ 1.7433076 sec
 RG 812.7
 DW 26.600 usec
 DE 6.00 usec
 TE 300.0 K
 D1 2.00000000 sec
 D11 0.03000000 sec
 D12 0.00002000 sec

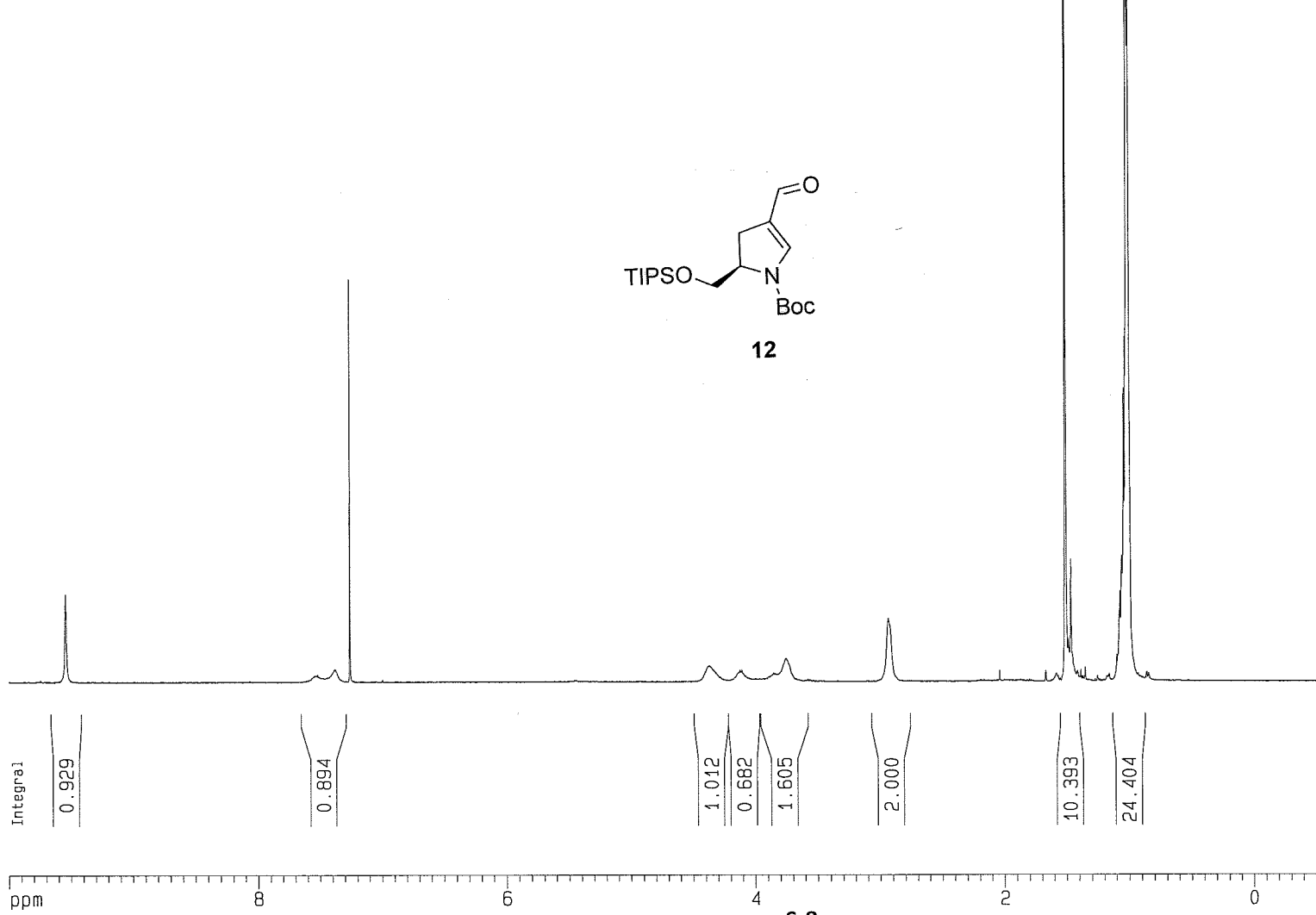
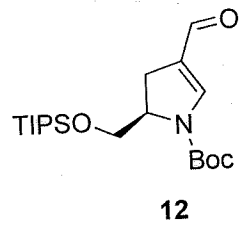
===== CHANNEL f1 =====
 NUC1 13C
 P1 5.40 usec
 PL1 -6.00 dB
 SFO1 75.4106357 MHz

===== CHANNEL f2 =====
 CPDPRG2 waltz16
 NUC2 1H
 PCPD2 115.00 usec
 PL2 0.00 dB
 PL12 20.00 dB
 PL13 20.00 dB
 SFO2 299.8711995 MHz

F2 - Processing parameters
 SI 32768
 SF 75.4023763 MHz
 WDW no
 SSB 0
 LB 0.00 Hz
 GB 0
 PC 1.40

1D NMR plot parameters
 CX 20.00 cm
 F1P 200.000 ppm
 F1 15080.47 Hz
 F2P 0.000 ppm
 F2 0.00 Hz
 PPMCM 10.00000 ppm/cm
 HZCM 754.02374 Hz/cm

3898.92
 3818.41
 3008.53
 2952.40
 2905.00
 2799.38
 2182.63
 1748.49
 1651.35
 1644.34
 1540.01
 1502.86
 1432.36
 1425.50
 1175.75
 867.39
 816.64
 719.92
 668.41
 605.57
 596.14
 587.95
 565.89
 554.54
 541.31
 440.77
 437.21
 432.47
 429.72
 425.33
 423.49
 418.06
 413.59
 407.94
 403.37



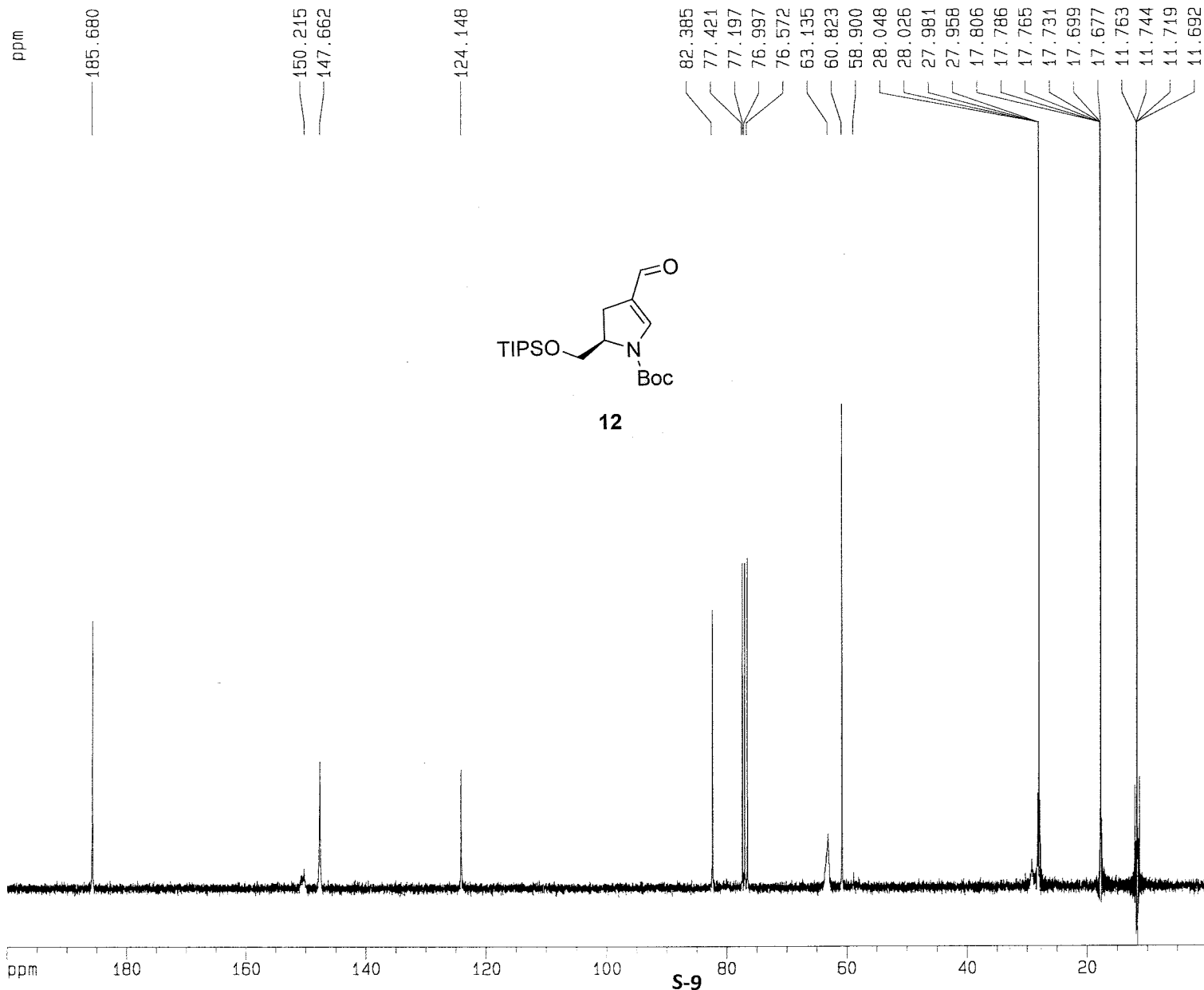
Current Data Parameters
 NAME 071908mg
 EXPNO 124108
 PROCNO 1

F2 - Acquisition Parameters
 Date_ 20080719
 Time 14.14
 INSTRUM spect
 PROBHD 5 mm BBI 1H-B
 PULPROG zg30
 TO 65536
 SOLVENT CDCl3
 NS 16
 DS 2
 SWH 8278.146 Hz
 FIDRES 0.126314 Hz
 AQ 3.9584243 sec
 RG 256
 DW 60.400 usec
 DE 6.00 usec
 TE 300.0 K
 D1 1.00000000 sec

===== CHANNEL f1 =====
 NUC1 1H
 P1 6.45 usec
 PL1 0.00 dB
 SF01 400.1324710 MHz

F2 - Processing parameters
 SI 32768
 SF 400.1300091 MHz
 WDW no
 SSB 0
 LB 0.00 Hz
 GB 0
 PC 1.00

1D NMR plot parameters
 CX 20.00 cm
 F1P 10.000 ppm
 F1 4001.30 Hz
 F2P -0.500 ppm
 F2 -200.07 Hz
 PPMCM 0.52500 ppm/cm
 HZCM 210.06825 Hz/cm



Current Data Parameters
 NAME 072108mgn
 EXPNO 124109
 PROCNO 1

F2 - Acquisition Parameters
 Date_ 20080721
 Time 19.14
 INSTRUM spect
 PROBHD 5 mm Multinu
 PULPROG zgpg30
 TO 24576
 SOLVENT CDCl3
 NS 2048
 DS 4
 SWH 18632.393 Hz
 FIDRES 0.766292 Hz
 AQ 0.6525428 sec
 RG 16384
 DW 26.550 usec
 DE 6.00 usec
 TE 300.0 K
 D1 2.00000000 sec
 d11 0.03000000 sec
 d12 0.00002000 sec

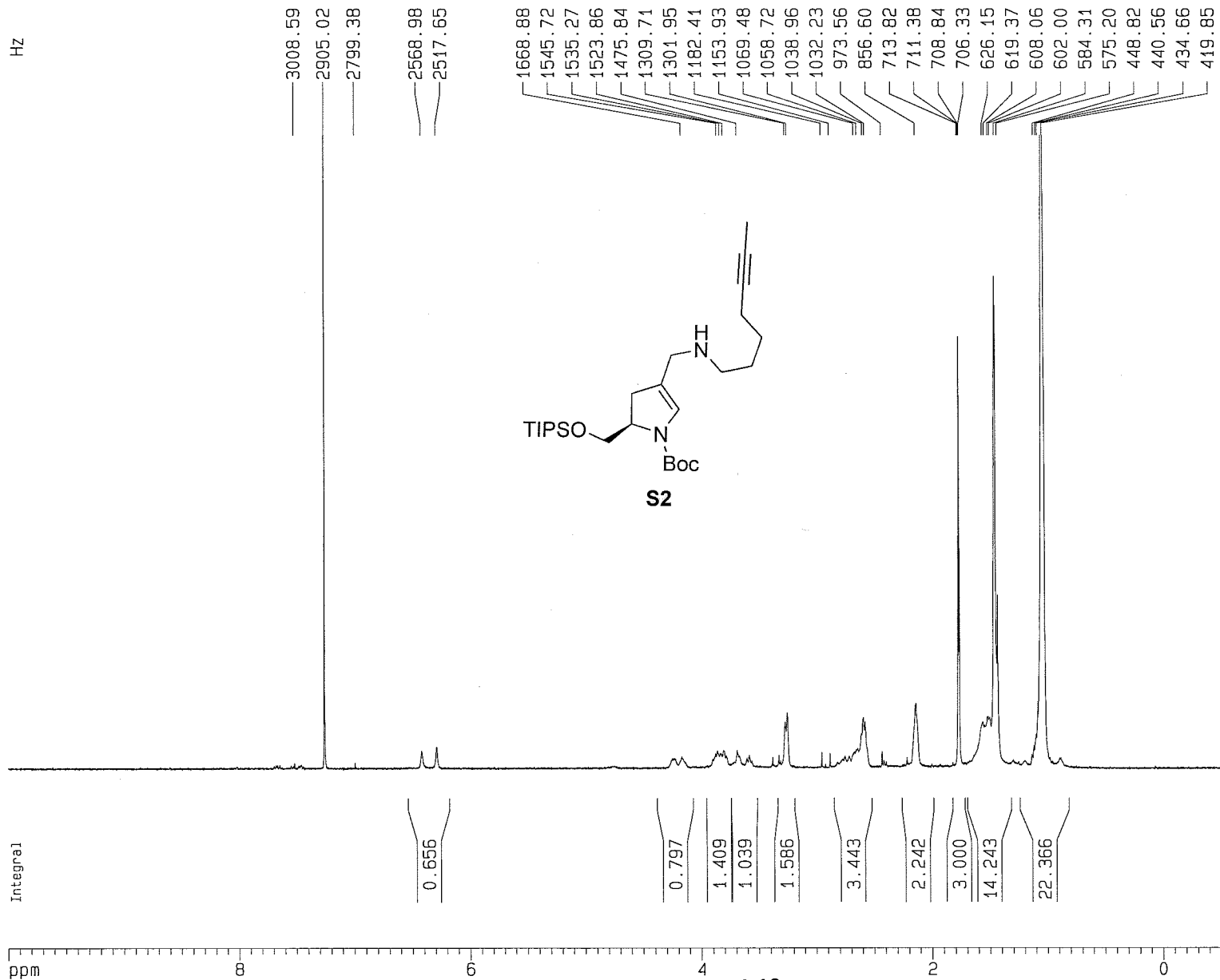
===== CHANNEL f1 =====
 NUC1 13C
 P1 11.80 usec
 PL1 0.00 dB
 SF01 75.4760200 MHz

===== CHANNEL f2 =====
 CPDPRG2 waltz16
 NUC2 1H
 PCPD2 110.00 usec
 PL2 0.00 dB
 PL12 17.50 dB
 PL13 17.50 dB
 SF02 300.1312005 MHz

F2 - Processing parameters
 SI 32768
 SF 75.4677566 MHz
 WDW no
 SSB 0
 LB 0.00 Hz
 GB 0
 PC 1.40

1D NMR plot parameters
 CX 20.00 cm
 F1P 200.000 ppm
 F1 15093.55 Hz
 F2P 0.000 ppm
 F2 0.00 Hz
 PPMCM 10.00000 ppm/cm
 HZCM 754.67761 Hz/cm

Hz



Current Data Parameters
 NAME 072208mgn
 EXPNO 130808
 PROCNO 1

F2 - Acquisition Parameters
 Date_ 20080722
 Time 15.38
 INSTRUM spect
 PROBHD 5 mm BBI 1H-B
 PULPROG zg30
 TD 65536
 SOLVENT CDCl3
 NS 16
 DS 2
 SWH 8278.146 Hz
 FIDRES 0.126314 Hz
 AQ 3.9584243 sec
 RG 406.4
 DW 60.400 usec
 DE 6.00 usec
 TE 300.0 K
 D1 1.00000000 sec

==== CHANNEL f1 =====
 NUC1 1H
 P1 6.45 usec
 PL1 0.00 dB
 SF01 400.1324710 MHz

F2 - Processing parameters
 SI 32768
 SF 400.1300091 MHz
 WDW no
 SSB 0
 LB 0.00 Hz
 GB 0
 PC 1.00

1D NMR plot parameters
 CX 20.00 cm
 F1P 10.000 ppm
 F1 4001.30 Hz
 F2P -0.500 ppm
 F2 -200.07 Hz
 PPMCM 0.52500 ppm/cm
 HZCM 210.06825 Hz/cm

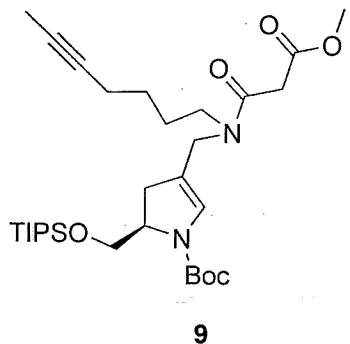
Integral

ppm

S-10

Hz

Integral



2904.94
 2799.42
 2592.45
 2544.85
 2515.70
 1624.35
 1555.99
 1500.32
 1495.27
 1392.19
 1387.46
 1376.76
 1351.52
 1343.74
 1285.06
 1277.70
 1049.16
 1038.00
 868.26
 861.71
 713.51
 710.96
 708.79
 707.67
 705.20
 668.26
 661.12
 653.82
 621.17
 587.28
 579.85
 575.42
 434.71
 418.42

0.747
 6.858
 1.589
 2.032
 1.914
 2.000
 2.844
 1.971
 1.128
 10.223
 19.830

Current Data Parameters
 NAME 072208mgn
 EXPNO 131108
 PROCNO 1

F2 - Acquisition Parameters
 Date_ 20080722
 Time 15.46
 INSTRUM spect
 PROBHD 5 mm BBI 1H-B
 PULPROG zg30
 TD 65536
 SOLVENT CDC13
 NS 16
 DS 2
 SWH 8278.146 Hz
 FIDRES 0.126314 Hz
 AQ 3.9584243 sec
 RG 512
 DW 60.400 usec
 DE 6.00 usec
 TE 300.0 K
 D1 1.00000000 sec

===== CHANNEL f1 =====
 NUC1 1H
 P1 6.45 usec
 PL1 0.00 dB
 SFO1 400.1324710 MHz

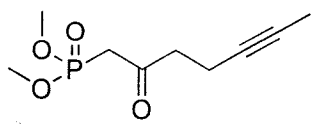
F2 - Processing parameters
 SI 32768
 SF 400.1300091 MHz
 WDW no
 SSB 0
 LB 0.00 Hz
 GB 0
 PC 1.00

1D NMR plot parameters
 CX 20.00 cm
 F1P 10.000 ppm
 F1 4001.30 Hz
 F2P -0.500 ppm
 F2 -200.07 Hz
 PPMCM 0.52500 ppm/cm
 HZCM 210.06825 Hz/cm

ppm

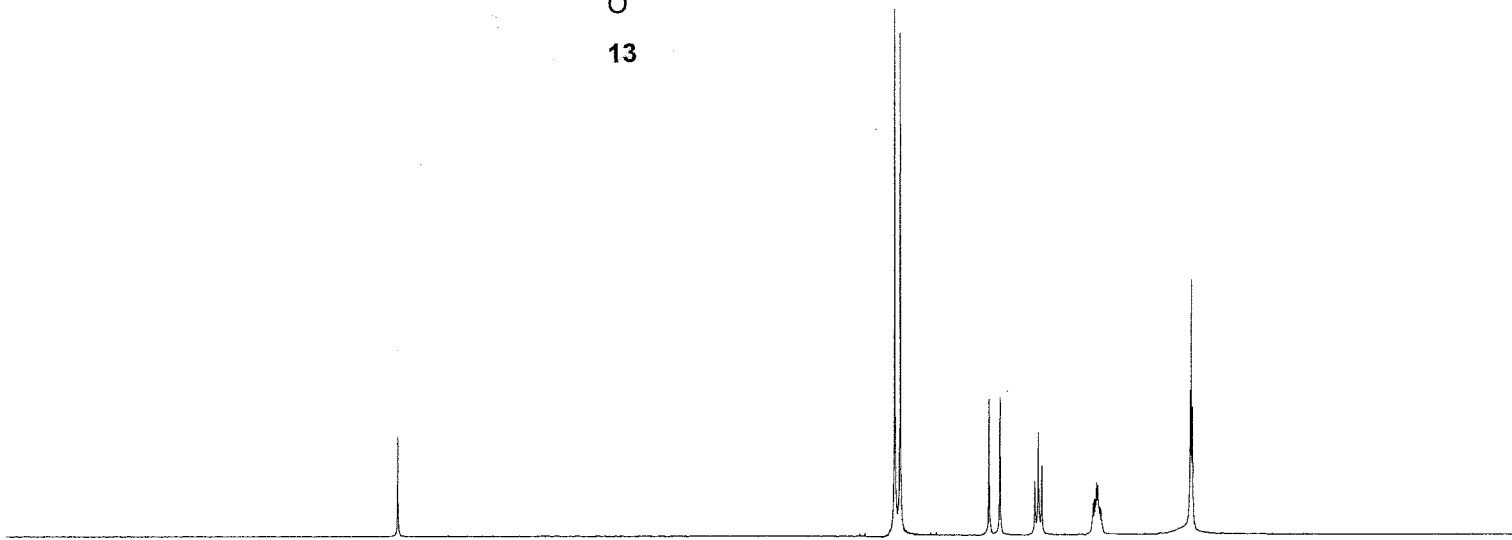
Hz

2179.07



13

1145.83
 1142.30
 1139.70
 1138.76
 1138.17
 1135.12
 1133.56
 1131.06
 1128.99
 1127.99
 945.69
 922.99
 849.92
 842.86
 835.50
 727.91
 725.38
 722.93
 720.49
 717.93
 716.14
 525.30
 522.73
 520.18



5.7184
 1.0000
 1.0264
 1.9326
 1.9670
 3.2925

Current Data Parameters
 NAME 070308mgn
 EXPNO 11945
 PROCNO 1

F2 - Acquisition Parameters
 Date_ 20080703
 Time 17.12
 INSTRUM spect
 PROBHD 5 mm Multinu
 PULPROG zg30
 TD 24576
 SOLVENT CDC13
 NS 16
 DS 2
 SWH 6172.839 Hz
 FIDRES 0.251173 Hz
 AQ 1.9907050 sec
 RG 574.7
 DW 81.000 usec
 DE 6.00 usec
 TE 300.0 K
 D1 1.00000000 sec

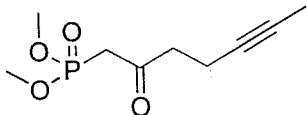
===== CHANNEL f1 =====
 NUC1 1H
 P1 9.60 usec
 PL1 -6.00 dB
 SF01 300.1318534 MHz

F2 - Processing parameters
 SI 32768
 SF 300.1300058 MHz
 WDW no
 SSB 0
 LB 0.00 Hz
 GB 0
 PC 1.00

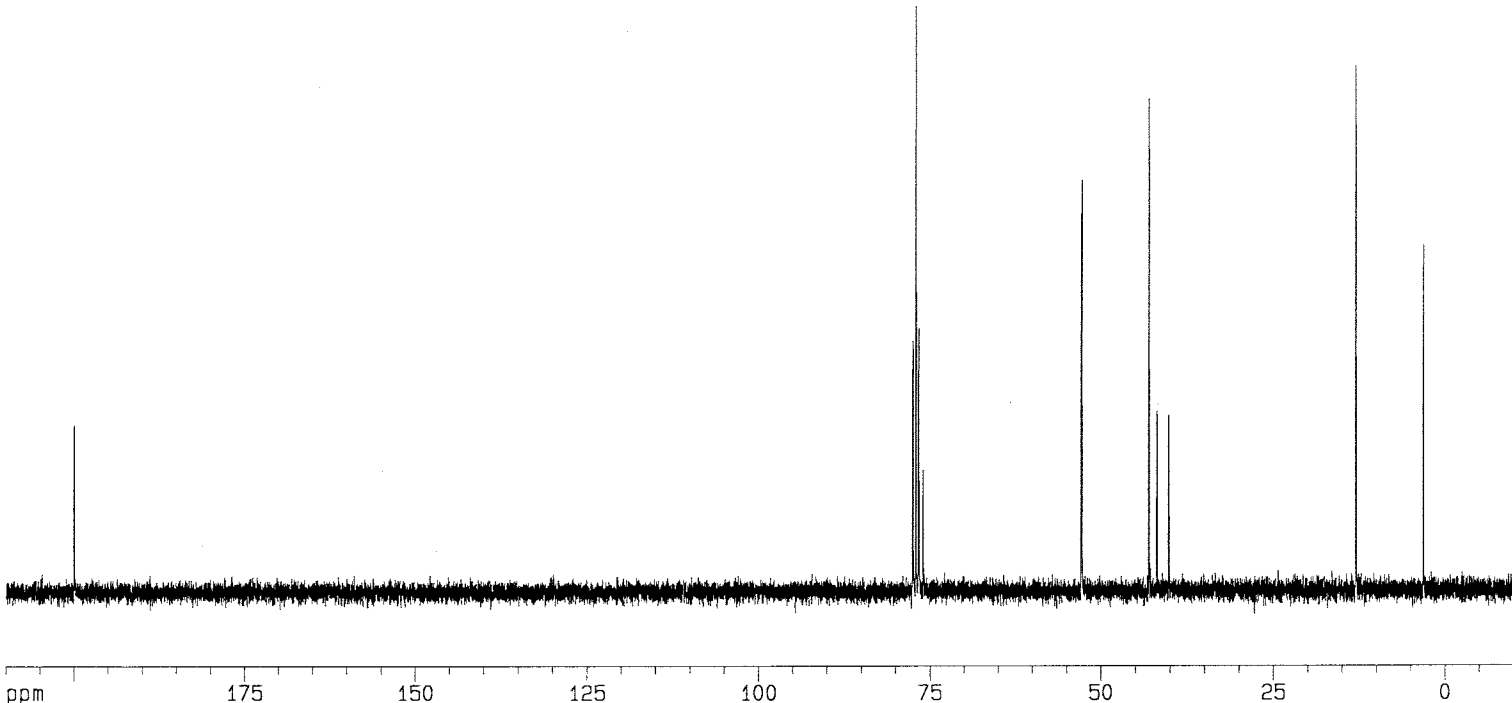
1D NMR plot parameters
 CX 20.00 cm
 F1P 10.000 ppm
 F1 3001.30 Hz
 F2P -0.500 ppm
 F2 -150.07 Hz
 PPMCM 0.52500 Hz/cm
 HZCM 157.56825 Hz/cm

ppm
200.008
199.925

77.454
77.030
77.003
76.599
76.037
52.874
52.789
43.066
41.889
40.189
12.991
3.151



13



S-15

Current Data Parameters
NAME 052608mgn
EXPNO 11943
PROCNO 1

F2 - Acquisition Parameters
Date_ 20080526
Time 17.52
INSTRUM spect
PROBHD 5 mm Multinu
PULPROG zgpg30
TD 24576
SOLVENT CDC13
NS 771
DS 4
SWH 18832.393 Hz
FIDRES 0.766292 Hz
AQ 0.6525428 sec
RG 11585.2
DW 26.550 usec
DE 6.00 usec
TE 300.0 K
D1 2.0000000 sec
d11 0.0300000 sec
d12 0.0000200 sec

===== CHANNEL f1 =====
NUC1 13C
P1 11.80 usec
PL1 0.00 dB
SFO1 75.4760200 MHz

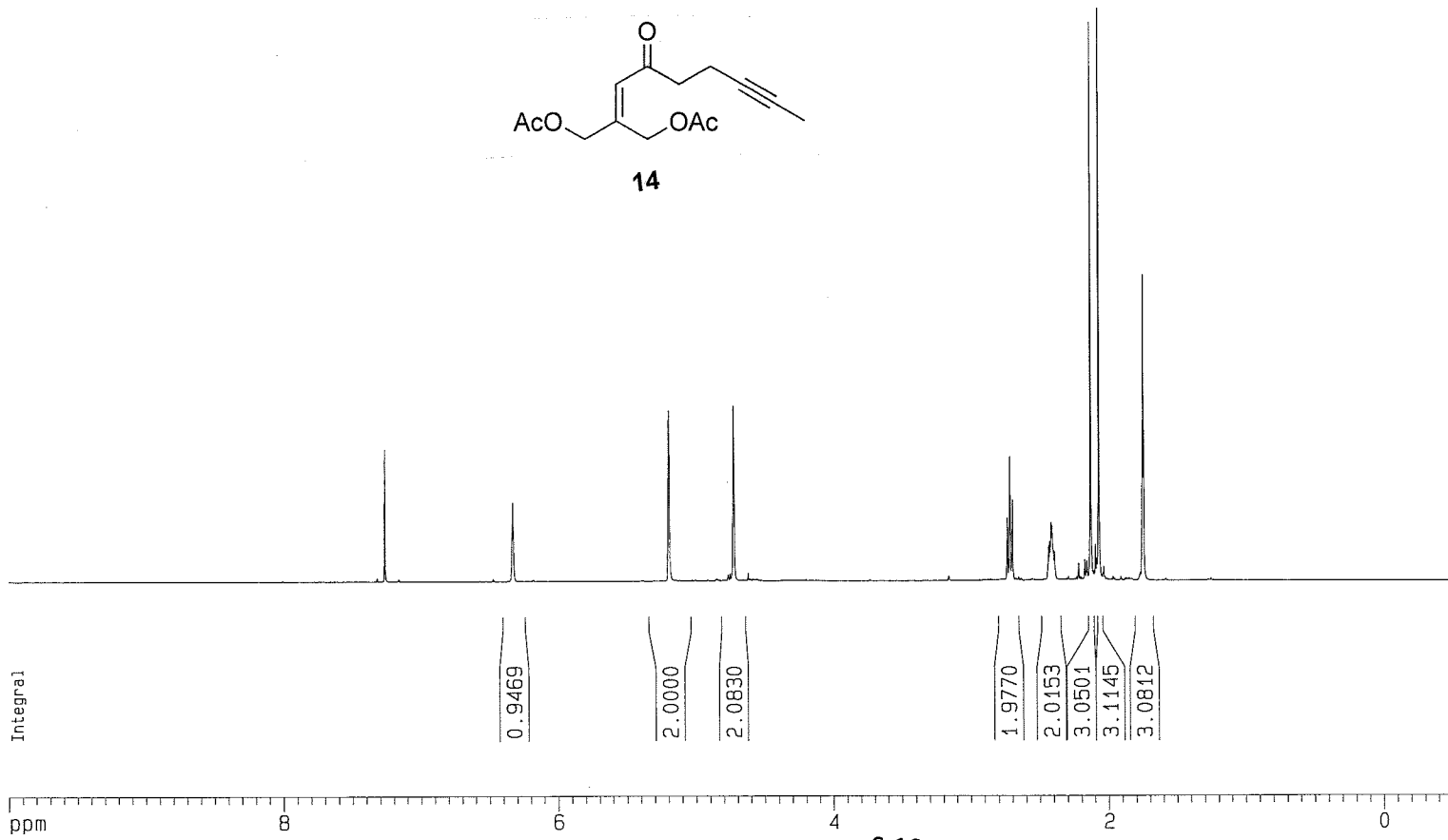
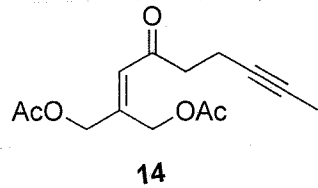
===== CHANNEL f2 =====
CPDPRG2 waltz16
NUC2 1H
PCPD2 110.00 usec
PL2 0.00 dB
PL12 17.50 dB
PL13 17.50 dB
SFO2 300.1312005 MHz

F2 - Processing parameters
SI 32768
SF 75.4677578 MHz
WDW no
SSB 0
LB 0.00 Hz
GB 0
PC 1.40

1D NMR plot parameters
CX 20.00 cm
F1P 210.000 ppm
F1 15848.23 Hz
F2P -10.000 ppm
F2 -754.68 Hz
PPMCM 11.00000 ppm/cm
HZCM 830.14532 Hz/cm

Hz

2904.98
 2533.06
 2531.52
 2529.88
 2078.62
 2078.19
 1891.12
 1890.72
 1093.05
 1086.00
 1078.56
 973.87
 971.30
 968.71
 966.31
 964.72
 963.80
 959.52
 851.55
 837.47
 827.80
 701.06
 698.54
 696.02



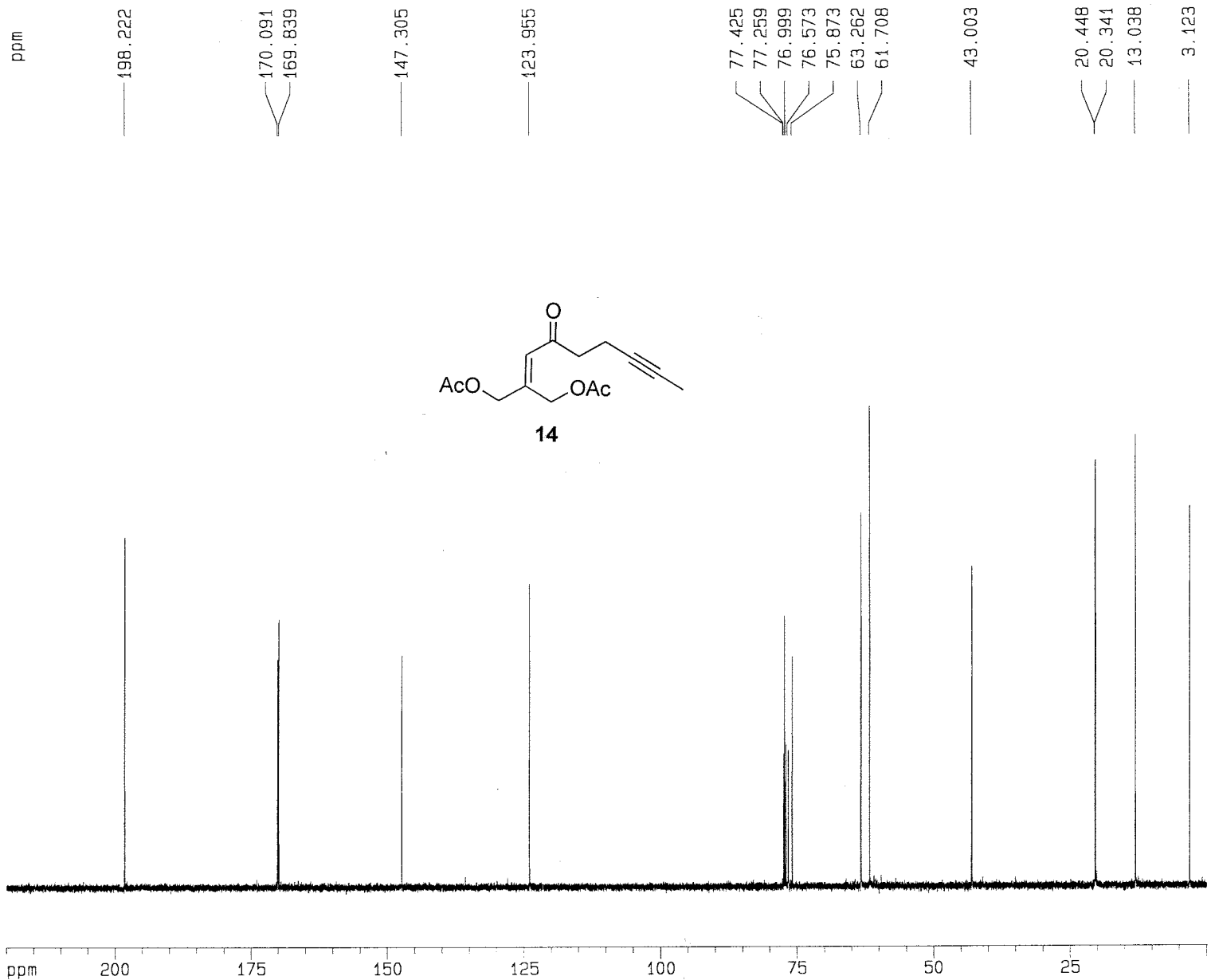
Current Data Parameters
 NAME 071908mgn
 EXPNO 119608
 PROCNO 1

F2 - Acquisition Parameters
 Date_ 20080719
 Time 14.06
 INSTRUM spect
 PROBHD 5 mm BBI 1H-B
 PULPROG zg30
 TD 65536
 SOLVENT CDC13
 NS 16
 DS 2
 SWH 8278.146 Hz
 FIDRES 0.126314 Hz
 AQ 3.9584243 sec
 RG 362
 DW 60.400 usec
 DE 6.00 usec
 TE 300.0 K
 D1 1.00000000 sec

===== CHANNEL f1 =====
 NUC1 1H
 P1 6.45 usec
 PL1 0.00 dB
 SF01 400.1324710 MHz

F2 - Processing parameters
 SI 32768
 SF 400.1300089 MHz
 WDW no
 SSB 0
 LB 0.00 Hz
 GB 0
 PC 1.00

1D NMR plot parameters
 CX 20.00 cm
 F1P 10.000 ppm
 F1 4001.30 Hz
 F2P -0.500 ppm
 F2 -200.07 Hz
 PPMCM 0.52500 ppm/cm
 HZCM 210.06825 Hz/cm



Current Data Parameters
 NAME 071908mgn
 EXPNO 119613
 PROCNO 1

F2 - Acquisition Parameters
 Date_ 20080719
 Time 15.21
 INSTRUM spect
 PROBHD 5 mm Multinu
 PULPROG zgpg30
 TD 65536
 SOLVENT CDC13
 NS 486
 DS 4
 SWH 18832.393 Hz
 FIDRES 0.287360 Hz
 AQ 1.7400308 sec
 RG 13004
 DW 26.550 usec
 DE 6.00 usec
 TE 300.0 K
 D1 2.00000000 sec
 d11 0.03000000 sec
 d12 0.00002000 sec

===== CHANNEL f1 =====
 NUC1 13C
 P1 11.80 usec
 PL1 0.00 dB
 SF01 75.4760200 MHz

===== CHANNEL f2 =====
 CPDPRG2 waltz16
 NUC2 1H
 PCPD2 110.00 usec
 PL2 0.00 dB
 PL12 17.50 dB
 PL13 17.50 dB
 SF02 300.1312005 MHz

F2 - Processing parameters
 SI 32768
 SF 75.4677629 MHz
 WDW no
 SSB 0
 LB 0.00 Hz
 GB 0
 PC 1.40

1D NMR plot parameters
 CX 20.00 cm
 F1P 220.000 ppm
 F1 16602.91 Hz
 F2P 0.000 ppm
 F2 0.00 Hz
 PPMCM 11.00000 ppm/cm
 HZCM 830.14545 Hz/cm

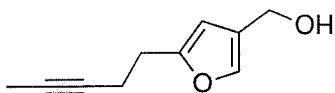
Hz

2185.41
2179.01

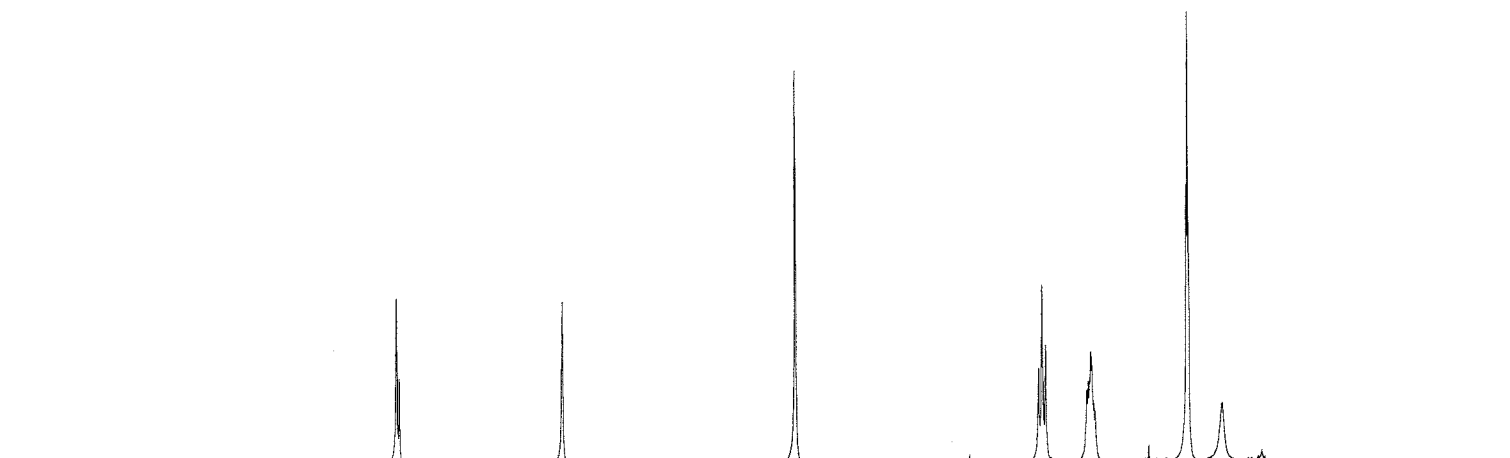
1837.84

1351.66

843.31
835.84
828.29
741.88
739.35
736.68
734.22
731.77
727.14
539.78
531.33
528.86
459.37



15



0.8805

1.0000

1.9327

1.9811

2.0569

3.0328

1.1319

Integral

ppm

Current Data Parameters
 NAME 071808mgn
 EXPNO 131408
 PROCNO 1

F2 - Acquisition Parameters
 Date_ 20080718
 Time 18.19
 INSTRUM spect
 PROBHD 5 mm Multinu
 PULPROG zg30
 TD 65536
 SOLVENT CDC13
 NS 16
 DS 2
 SWH 6172.839 Hz
 FIDRES 0.094190 Hz
 AQ 5.3084660 sec
 RG 512
 DW 81.000 usec
 DE 6.00 usec
 TE 300.0 K
 D1 1.00000000 sec

===== CHANNEL f1 =====
 NUC1 1H
 P1 9.60 usec
 PL1 -6.00 dB
 SF01 300.1318534 MHz

F2 - Processing parameters
 SI 32768
 SF 300.1300060 MHz
 WDW no
 SSB 0
 LB 0.00 Hz
 GB 0
 PC 1.00

1D NMR plot parameters
 CX 20.00 cm
 F1P 10.000 ppm
 F1 3001.30 Hz
 F2P -0.500 ppm
 F2 -150.07 Hz
 PPMCM 0.52500 ppm/cm
 HZCM 157.56825 Hz/cm

ppm

155.431

138.153

125.662

105.550

77.831

77.426

77.001

76.576

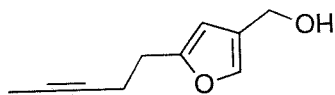
76.177

56.392

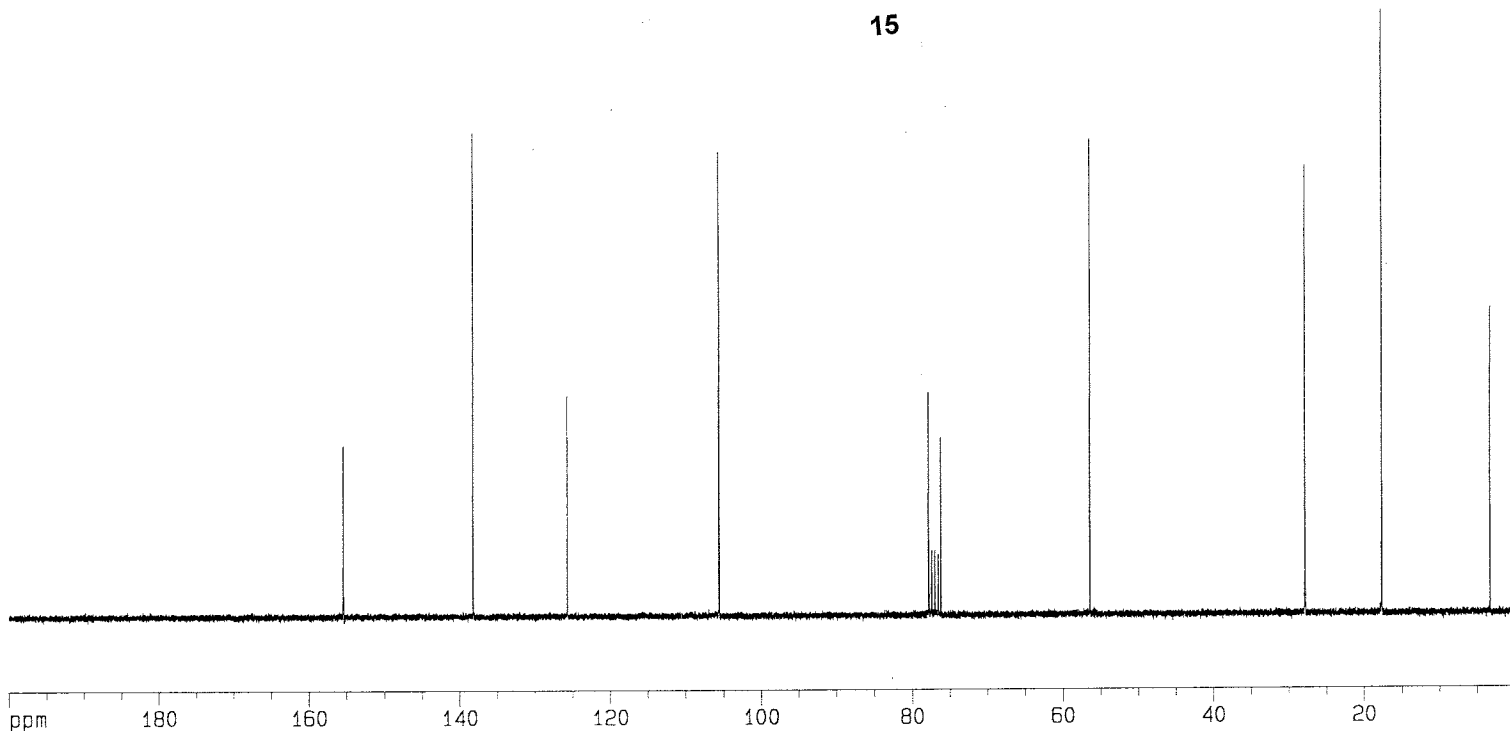
27.841

17.661

3.234



15



S-19

Current Data Parameters
 NAME 071808mgn
 EXPNO 12409
 PROCNO 1

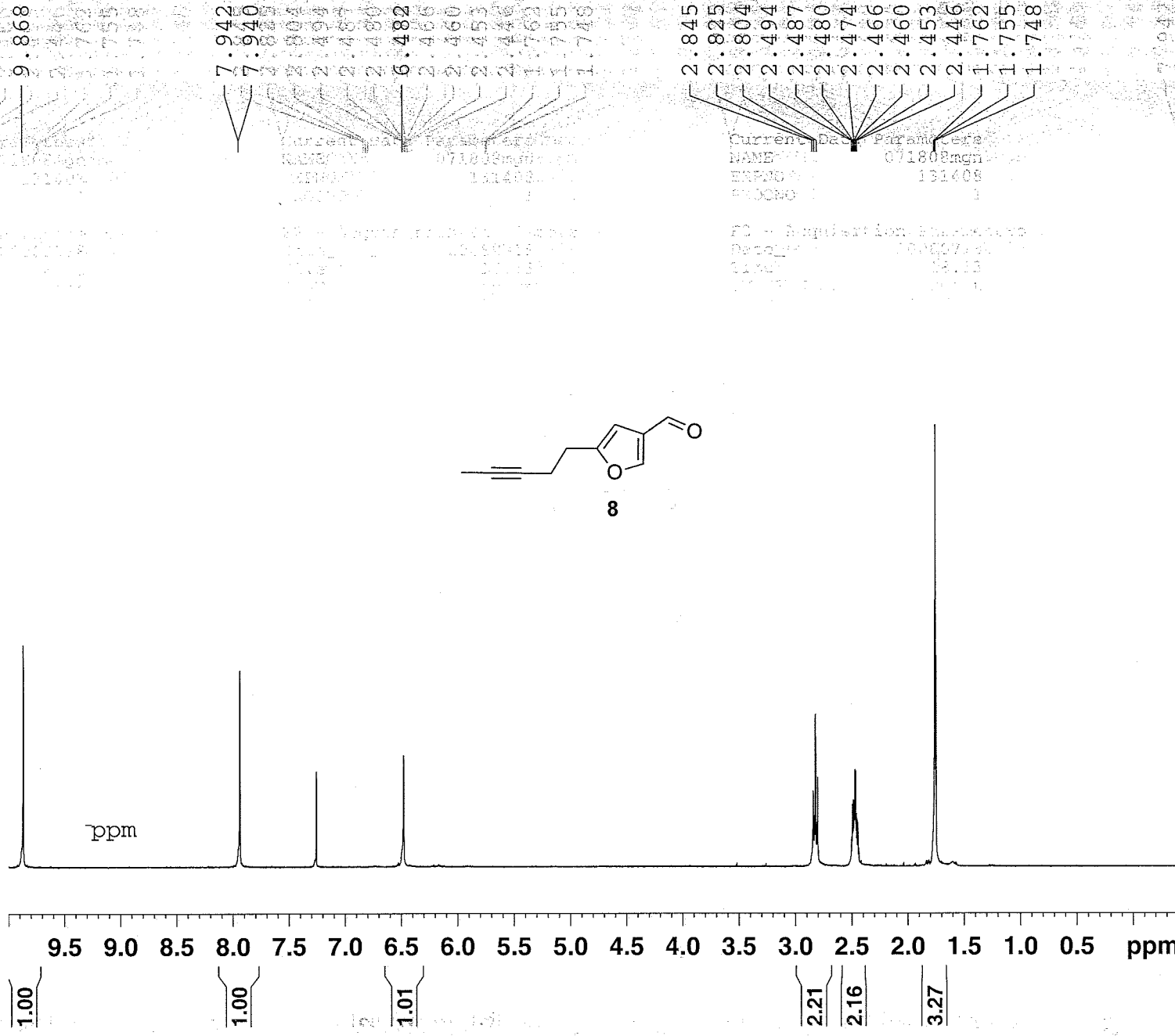
F2 - Acquisition Parameters
 Date_ 20080718
 Time 19.35
 INSTRUM spect
 PROBHD 5 mm Multinu
 PULPROG zgpg30
 TD 65536
 SOLVENT CDCl3
 NS 500
 DS 4
 SWH 18832.393 Hz
 FIDRES 0.287360 Hz
 AQ 1.7400308 sec
 RG 16384
 DW 26.550 usec
 DE 6.00 usec
 TE 300.0 K
 D1 2.00000000 sec
 d11 0.03000000 sec
 d12 0.00002000 sec

===== CHANNEL f1 =====
 NUC1 13C
 P1 11.80 usec
 PL1 0.00 dB
 SF01 75.4760200 MHz

===== CHANNEL f2 =====
 CPDPRG2 waltz16
 NUC2 1H
 PCPD2 110.00 usec
 PL2 0.00 dB
 PL12 17.50 dB
 PL13 17.50 dB
 SF02 300.1312005 MHz

F2 - Processing parameters
 SI 32768
 SF 75.4677589 MHz
 WDW nc
 SSB 0
 LB 0.00 Hz
 GB 0
 PC 1.40

1D NMR plot parameters
 CX 20.00 cm
 F1P 200.000 ppm
 F1 15093.55 Hz
 F2P 0.000 ppm
 F2 0.00 Hz
 PPMCM 10.00000 ppm/cm
 HZCM 754.67761 Hz/cm



Current Data Parameters
 NAME 071808mgn
 EXPNO 131408
 PROCNO 1

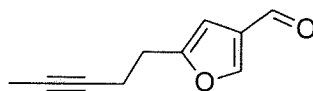
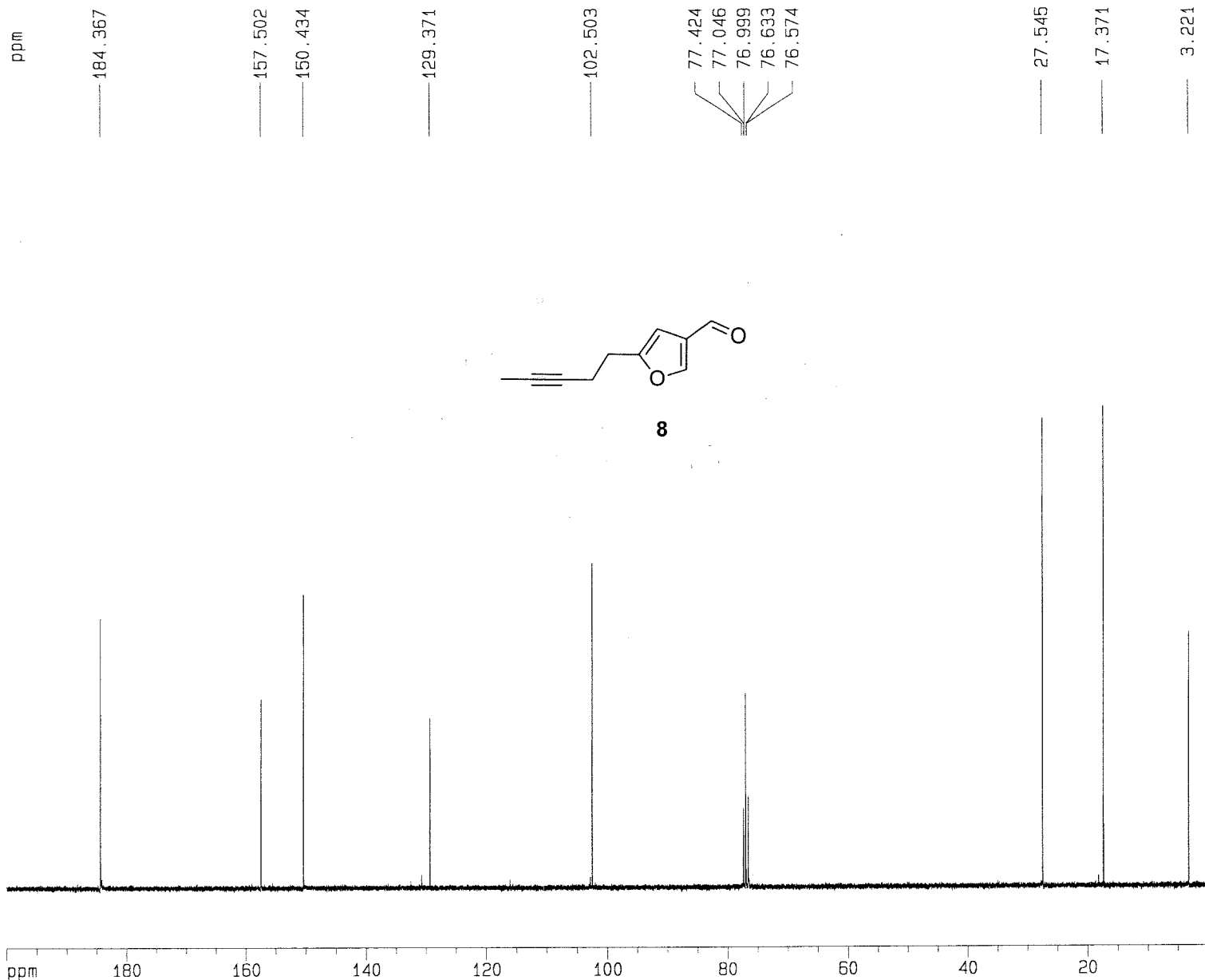
Current Data Parameters
 NAME 071808mgn
 EXPNO 131408
 PROCNO 1

Current Data Parameters
 NAME 071808mgn
 EXPNO 131408
 PROCNO 1

F2 - Acquisition Parameters
 Date_ 20080718
 Time 18.13
 INSTRUM spect
 PROBHD 5 mm QNP 1H/15
 PULPROG zg30
 TD 65536
 SOLVENT CDC13
 NS 16
 DS 2
 SWH 7440.476 Hz
 FIDRES 0.113533 Hz
 AQ 4.4040694 sec
 RG 812.7
 DW 67.200 usec
 DE 6.00 usec
 TE 295.8 K
 D1 1.00000000 sec
 TD0 1

==== CHANNEL f1 =====
 NUC1 1H
 P1 14.93 usec
 PL1 -3.00 dB
 SFO1 360.1322240 MHz

F2 - Processing parameters
 SI 32768
 SF 360.1300135 MHz
 WDW no
 SSB 0
 LB 0.00 Hz
 GB 0
 PC 1.00



8

Current Data Parameters
 NAME 071808mgm
 EXPNO 131409
 PROCNO 1

F2 - Acquisition Parameters

Date_ 20080718
 Time 18.57
 INSTRUM spect
 PROBHD 5 mm Multinu
 PULPROG zgpg30
 TD 65536
 SOLVENT CDCl3
 NS 510
 DS 4
 SWH 18832.393 Hz
 FIDRES 0.287360 Hz
 AQ 1.7400308 sec
 RG 16384
 DW 26.550 usec
 DE 6.00 usec
 TE 300.0 K
 D1 2.0000000 sec
 d11 0.03000000 sec
 d12 0.00002000 sec

===== CHANNEL f1 =====
 NUC1 13C
 P1 11.80 usec
 PL1 0.00 dB
 SF01 75.4760200 MHz

===== CHANNEL f2 =====
 CPDPRG2 waltz16
 NUC2 1H
 PCPD2 110.00 usec
 PL2 0.00 dB
 PL12 17.50 dB
 PL13 17.50 dB
 SF02 300.1312005 MHz

F2 - Processing parameters

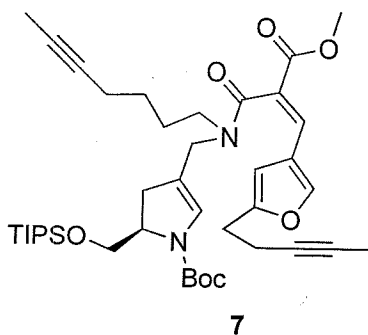
SI 32768
 SF 75.4677578 MHz
 WDW nc
 SSB 0
 LB 0.00 Hz
 GB 0
 PC 1.40

1D NMR plot parameters

CX 20.00 cm
 F1P 200.000 ppm
 F1 15093.55 Hz
 F2P 0.000 ppm
 F2 0.00 Hz
 PPMCM 10.00000 ppm/cm
 HZCM 754.67761 Hz/cm

Hz

3033.83
3006.38
3002.22
2905.06
2613.67
2573.49
2485.76
1670.43
1511.90
1344.17
1248.23
1100.88
1093.70
966.33
915.21
878.37
787.64
701.46
687.95
586.79
580.04
500.33
413.41



Integral

1.943
2.000
0.401
9.352
1.359
3.699
3.474
1.452
1.680
8.775
12.320
1.743
22.377

ppm

8

6

4

S-22

2

0

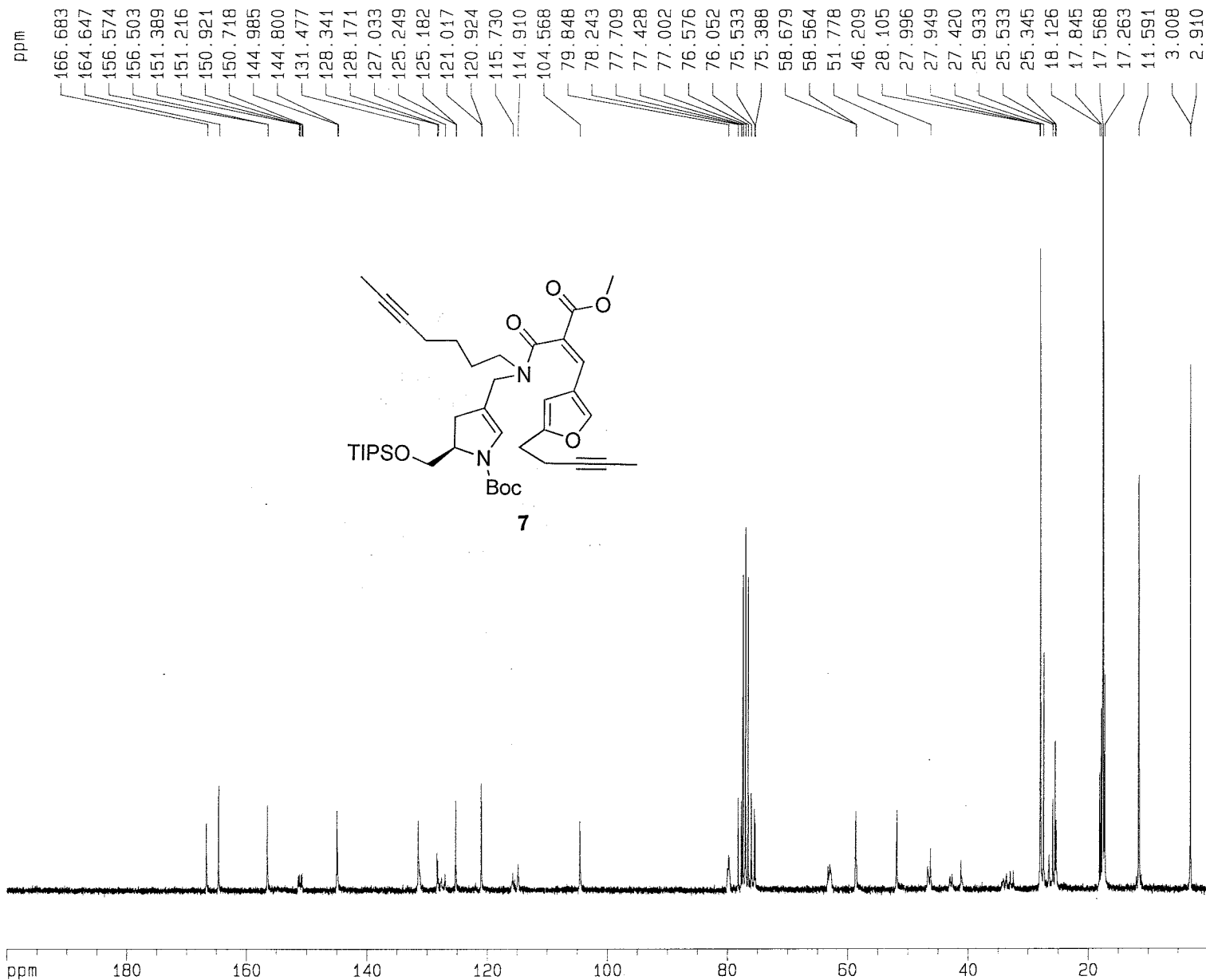
Current Data Parameters
NAME 072208mg
EXPNO 131508
PROCNO 1

F2 - Acquisition Parameters
Date_ 20080722
Time 15.54
INSTRUM spect
PROBHD 5 mm BBI 1H-B
PULPROG zg30
TD 65536
SOLVENT CDC13
NS 16
DS 2
SWH 8278.146 Hz
FIDRES 0.126314 Hz
AQ 3.9584243 sec
RG 80.6
DW 60.400 usec
DE 6.00 usec
TE 300.0 K
D1 1.00000000 sec

===== CHANNEL f1 =====
NUC1 1H
P1 6.45 usec
PL1 0.00 dB
SFO1 400.1324710 MHz

F2 - Processing parameters
SI 32768
SF 400.1300084 MHz
WDW no
SSB 0
LB 0.00 Hz
GB 0
PC 1.00

1D NMR plot parameters
CX 20.00 cm
F1P 10.000 ppm
F1 4001.30 Hz
F2P -0.500 ppm
F2 -200.07 Hz
PPMCM 0.52500 ppm/cm
HZCM 210.06825 Hz/cm



Current Data Parameters
 NAME 072808mgn
 EXPNO 131513
 PROCNO 1

F2 - Acquisition Parameters
 Date_ 20080728
 Time 20.07
 INSTRUM spect
 PROBHD 5 mm Multinu
 PULPROG zgpg30
 TD 24576
 SOLVENT CDCl3
 NS 3072
 DS 4
 SWH 18832.393 Hz
 FIDRES 0.766292 Hz
 AQ 0.6525428 sec
 RG 8192
 DW 26.550 usec
 DE 6.00 usec
 TE 300.0 K
 D1 2.00000000 sec
 d11 0.03000000 sec
 d12 0.00002000 sec

===== CHANNEL f1 =====
 NUC1 13C
 P1 11.80 usec
 PL1 0.00 dB
 SF01 75.4760200 MHz

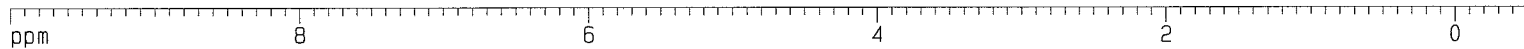
===== CHANNEL f2 =====
 CPDPRG2 waltz16
 NUC2 1H
 PCPD2 110.00 usec
 PL2 0.00 dB
 PL12 17.50 dB
 PL13 17.50 dB
 SF02 300.1312005 MHz

F2 - Processing parameters
 SI 32768
 SF 75.4677675 MHz
 WDW no
 SSB 0
 LB 0.00 Hz
 GB 0
 PC 1.40

1D NMR plot parameters
 CX 20.00 cm
 F1P 200.000 ppm
 F1 15093.55 Hz
 F2P 0.000 ppm
 F2 0.00 Hz
 PPMCM 10.00000 ppm/cm
 HZCM 754.67767 Hz/cm

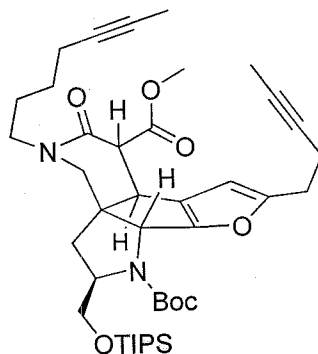
Hz

Integral



2905.04

2325.72
1884.17
1671.42
1604.94
1528.28
1416.66
1360.10
1327.85
1321.01
1111.58
1104.20
1096.67
967.33
893.25
852.30
706.86
704.31
701.82
639.61
636.05
605.74
590.98
578.57
573.95
566.88
451.36
448.04
442.39
434.44
429.93
413.06



5

0.902
1.000
0.884
1.472
4.322
2.476
2.600
1.588
2.264
2.551
2.796
2.140
2.748
8.198
3.695
14.714
28.433

Current Data Parameters
NAME 072908mgn
EXPNO 132008
PROCNO 1

F2 - Acquisition Parameters
Date_ 20080729
Time 10.11
INSTRUM spect
PROBHD 5 mm BBI 1H-B
PULPROG zg30
TD 65536
SOLVENT CDC13
NS 16
DS 2
SWH 8278.146 Hz
FIDRES 0.126314 Hz
AQ 3.9584243 sec
RG 512
DW 60.400 usec
DE 6.00 usec
TE 300.0 K
D1 1.00000000 sec

----- CHANNEL f1 -----
NUC1 1H
P1 6.45 usec
PL1 0.00 dB
SFO1 400.1324710 MHz

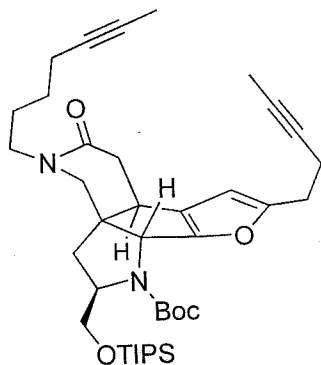
F2 - Processing parameters
SI 32768
SF 400.1300089 MHz
WDW no
SSB 0
LB 0.00 Hz
GB 0
PC 1.00

1D NMR plot parameters
CX 20.00 cm
F1P 10.000 ppm
F1 4001.30 Hz
F2P -0.500 ppm
F2 -200.07 Hz
PPMCM 0.52500 ppm/cm
HZCM 210.06825 Hz/cm

Hz

2905.05

2350.65
1876.30
1656.74
1598.00
1491.35
1419.73
1409.39
1204.20
1113.24
1105.79
1098.19
969.56
874.52
867.69
853.41
851.14
707.99
705.39
703.96
701.39
630.80
624.40
605.30
566.29
559.22
552.54
451.71
448.42
443.02
434.91
430.59



16

Integral

1.021
1.000
0.900
1.257
1.060
3.415
1.164
1.091
2.176
1.155
2.240
1.289
4.276
6.926
12.620
2.602
24.129

ppm

8

6

4

2

0

S-26

Current Data Parameters

NAME 072908mgn
EXPNO 132208
PROCNO 1

F2 - Acquisition Parameters

Date_ 20080729
Time 12.56
INSTRUM spect
PROBHD 5 mm BBI 1H-B
PULPROG zg30
TD 65536
SOLVENT CDC13
NS 16
DS 2
SWH 8278.146 Hz
FIDRES 0.126314 Hz
AQ 3.9584243 sec
RG 362
DW 60.400 usec
DE 6.00 usec
TE 300.0 K
D1 1.00000000 sec

===== CHANNEL f1 =====

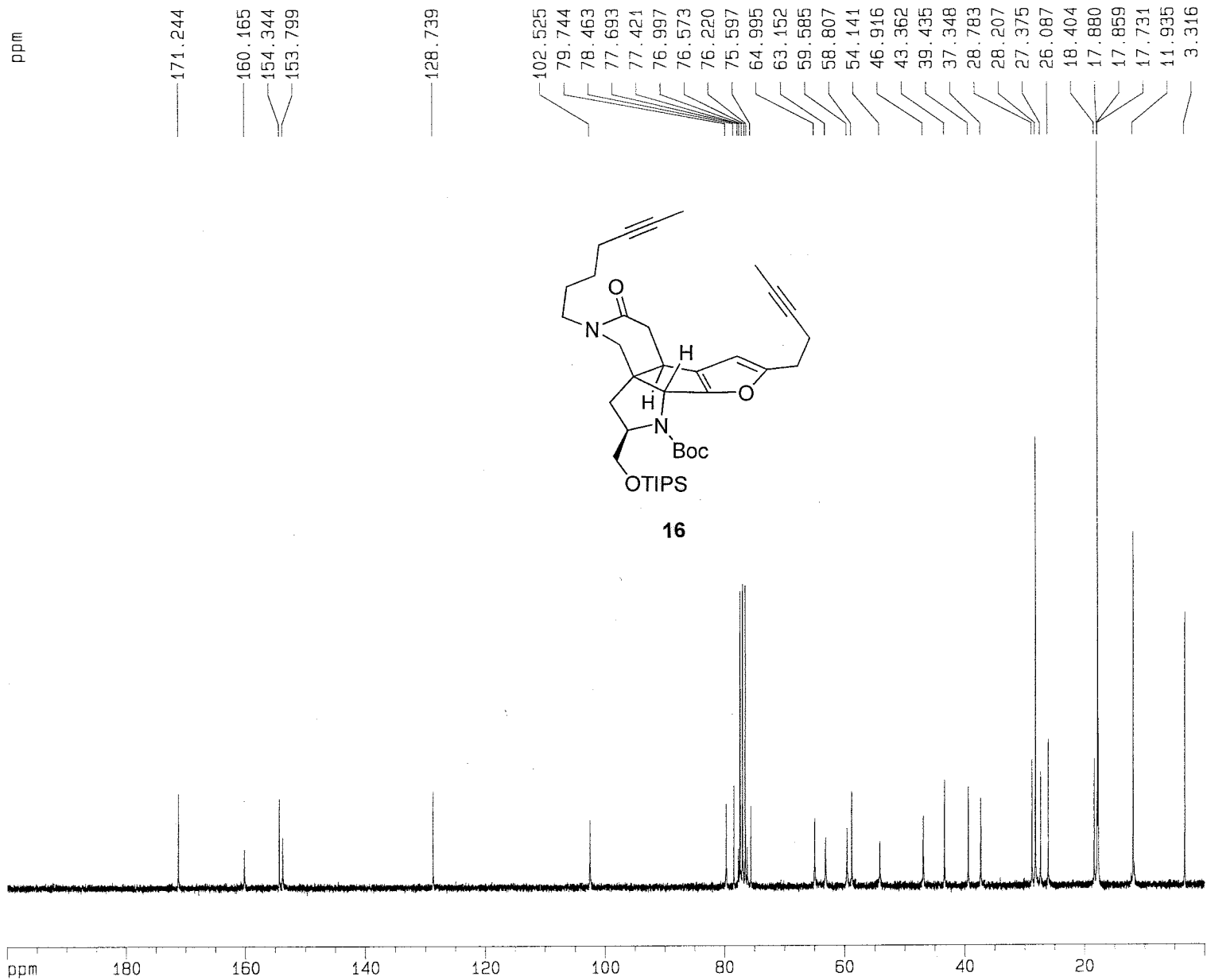
NUC1 1H
P1 6.45 usec
PL1 0.00 dB
SF01 400.1324710 MHz

F2 - Processing parameters

SI 32768
SF 400.1300089 MHz
WDW no
SSB 0
LB 0.00 Hz
GB 0
PC 1.00

1D NMR plot parameters

CX 20.00 cm
F1P 10.000 ppm
F1 4001.30 Hz
F2P -0.500 ppm
F2 -200.07 Hz
PPMCM 0.52500 ppm/cm
HZCM 210.06825 Hz/cm



Current Data Parameters
 NAME 072908mgn
 EXPNO 132213
 PROCNO 1

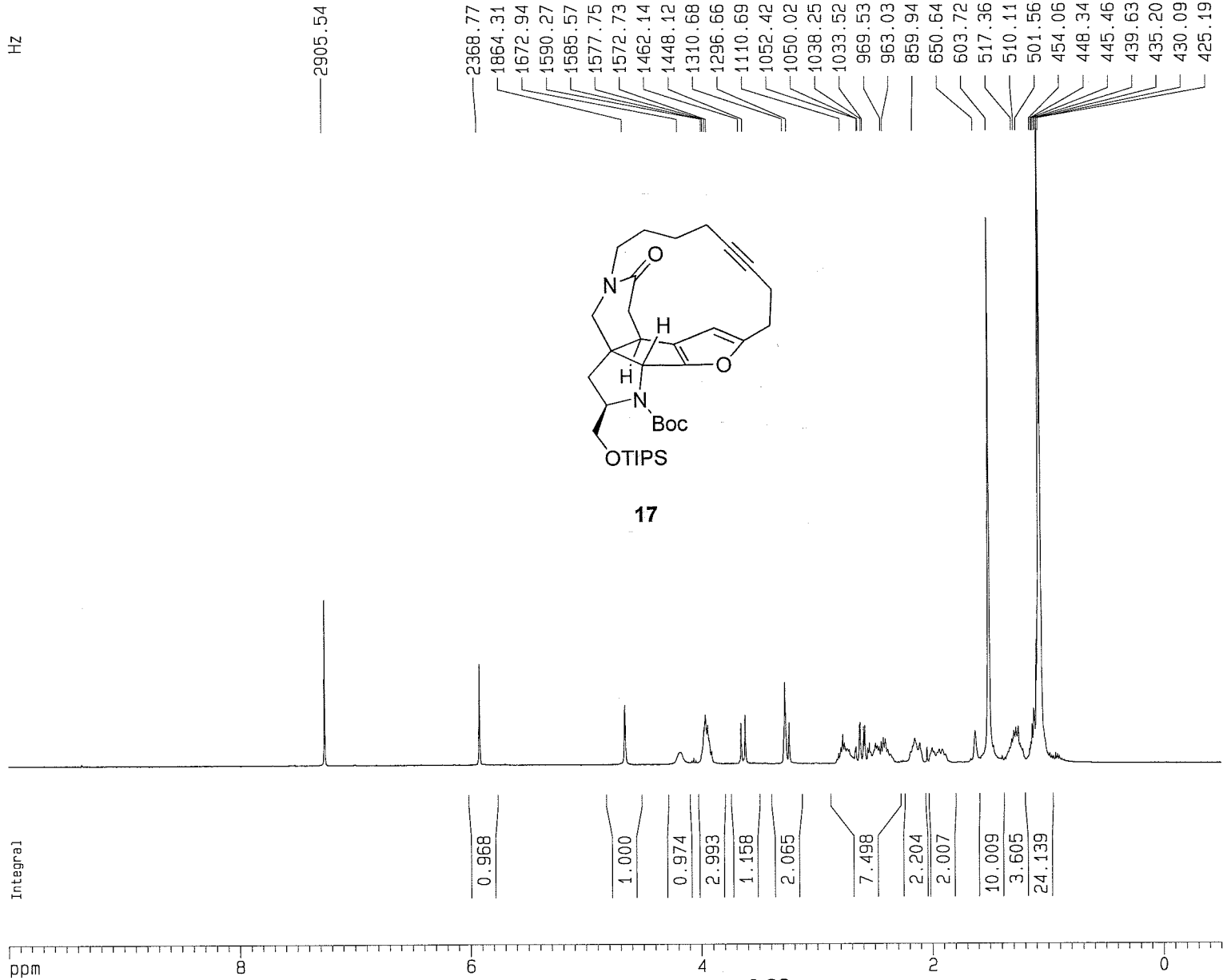
F2 - Acquisition Parameters
 Date_ 20080729
 Time 19.57
 INSTRUM spect
 PROBHD 5 mm Multinu
 PULPROG zgpg30
 TD 24576
 SOLVENT CDC13
 NS 2048
 DS 4
 SWH 18832.393 Hz
 FIDRES 0.766292 Hz
 AQ 0.6525428 sec
 RG 16384
 DW 26.550 usec
 DE 6.00 usec
 TE 300.0 K
 D1 2.0000000 sec
 d11 0.0300000 sec
 d12 0.0000200 sec

===== CHANNEL f1 =====
 NUC1 13C
 P1 11.80 usec
 PL1 0.00 dB
 SF01 75.4760200 MHz

===== CHANNEL f2 =====
 CPDPRG2 waltz16
 NUC2 1H
 PCPD2 110.00 usec
 PL2 0.00 dB
 PL12 17.50 dB
 PL13 17.50 dB
 SF02 300.1312005 MHz

F2 - Processing parameters
 SI 32768
 SF 75.4677578 MHz
 WDW no
 SSB 0
 LB 0.00 Hz
 GB 0
 PC 1.40

1D NMR plot parameters
 CX 20.00 cm
 F1P 200.000 ppm
 F1 15093.55 Hz
 F2P 0.000 ppm
 F2 0.00 Hz
 PPMCM 10.00000 ppm/cm
 HZCM 754.67761 Hz/cm



Current Data Parameters
 NAME 080108mgn
 EXPNO 132708
 PROCNO 1

F2 - Acquisition Parameters
 Date_ 20080801
 Time 10.57
 INSTRUM spect
 PROBHD 5 mm BBI 1H-B
 PULPROG zg30
 TD 65536
 SOLVENT CDC13
 NS 16
 DS 2
 SWH 8278.146 Hz
 FIDRES 0.126314 Hz
 AQ 3.9584243 sec
 RG 228.1
 DW 60.400 usec
 DE 6.00 usec
 TE 300.0 K
 D1 1.00000000 sec

===== CHANNEL f1 =====
 NUC1 1H
 P1 6.45 usec
 PL1 0.00 dB
 SF01 400.1324710 MHz

F2 - Processing parameters
 SI 32768
 SF 400.1300086 MHz
 WDW no
 SSB 0
 LB 0.00 Hz
 GB 0
 PC 1.00

1D NMR plot parameters
 CX 20.00 cm
 F1P 10.000 ppm
 F1 4001.30 Hz
 F2P -0.500 ppm
 F2 -200.07 Hz
 PPMCM 0.52500 ppm/cm
 HZCM 210.06825 Hz/cm

Current Data Parameters
 NAME 080108mg
 EXPNO 132713
 PROCNO 1

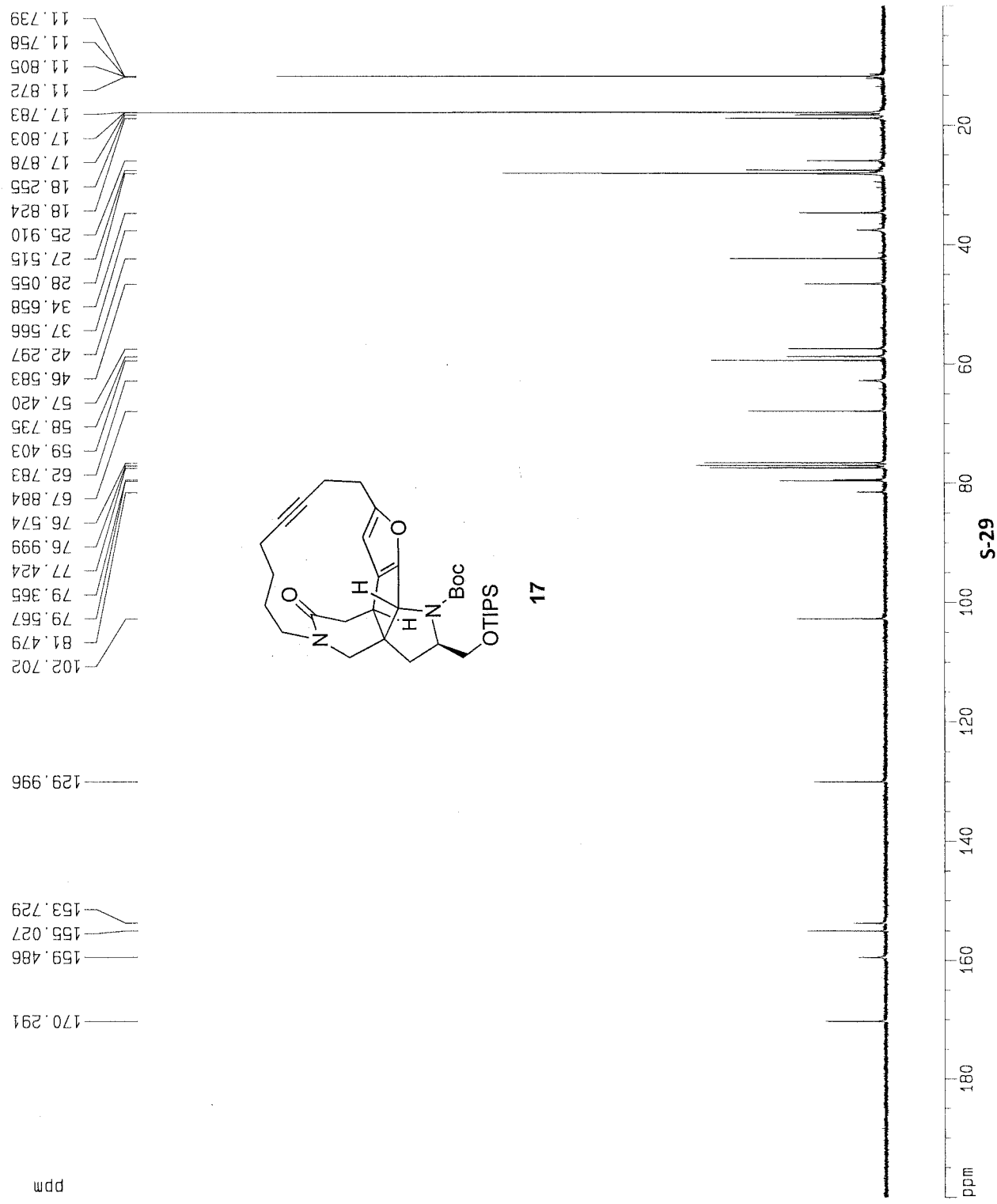
F2 - Acquisition Parameters
 Date_ 20080801
 Time 18.58
 INSTRUM spect
 PROBHD 5 mm Multinu
 PULPROG zgpg30
 TD 24576
 SOLVENT CDCl3
 NS 2048
 DS 4
 SWH 18632.393 Hz
 FIDRES 0.766292 Hz
 AQ 0.6525428 sec
 RG 32768
 DW 26.550 usec
 DE 6.00 usec
 TE 300.0 K
 D1 2.00000000 sec
 d11 0.03000000 sec
 d12 0.00002000 sec

==== CHANNEL f1 =====
 NUC1 13C
 P1 11.80 usec
 PL1 0.00 dB
 SF01 75.4760200 MHz

==== CHANNEL f2 =====
 CPDPRG2 waitz16
 NUC2 1H
 PCPD2 110.00 usec
 PL2 0.00 dB
 PL12 17.50 dB
 PL13 17.50 dB
 SF02 300.1312005 MHz

F2 - Processing parameters
 SI 32768
 SF 75.4677595 MHz
 WDW no
 SSB 0
 LB 0.00 Hz
 GB 0
 PC 1.40

1D NMR plot parameters
 CX 20.00 cm
 F1p 200.000 ppm
 F1 15093.55 Hz
 F2p 0.000 ppm
 F2 0.00 Hz
 PPMCM 10.00000 ppm/cm
 HZCM 754.67761 Hz/cm

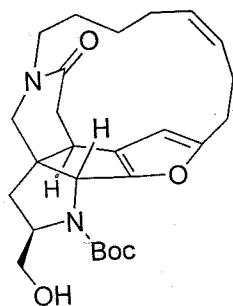


Hz

Integral

ppm

2904.92
2378.04
2334.59
2184.51
2174.87
2142.89
2138.42
2127.41
2106.16
1897.49
1615.87
1500.14
1479.58
1464.72
1450.85
1294.49
1291.96
1289.97
1272.33
1258.50
1048.08
1045.67
1024.70
1019.68
1011.12
1009.45
997.45
961.64
789.13
784.08
776.50
771.43
627.46
620.82
571.00
558.89
546.21
438.76



18

1.000
1.014
2.011
1.046
1.040
1.136
3.187
1.005
1.049
2.149
1.137
2.141
1.166
1.060
1.174
1.062
10.764
2.165
2.214
0.879

Current Data Parameters
NAME 081308mgn
EXPNO 134208
PROCNO 1

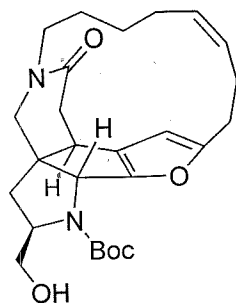
F2 - Acquisition Parameters
Date_ 20080813
Time 10.59
INSTRUM spect
PROBHD 5 mm BBI 1H-B
PULPROG zg30
TD 65536
SOLVENT CDC13
NS 16
DS 2
SWH 8278.146 Hz
FIDRES 0.126314 Hz
AQ 3.9584243 sec
RG 512
DW 60.400 usec
DE 6.00 usec
TE 300.0 K
D1 1.00000000 sec

===== CHANNEL f1 =====
NUC1 1H
P1 6.45 usec
PL1 0.00 dB
SF01 400.1324710 MHz

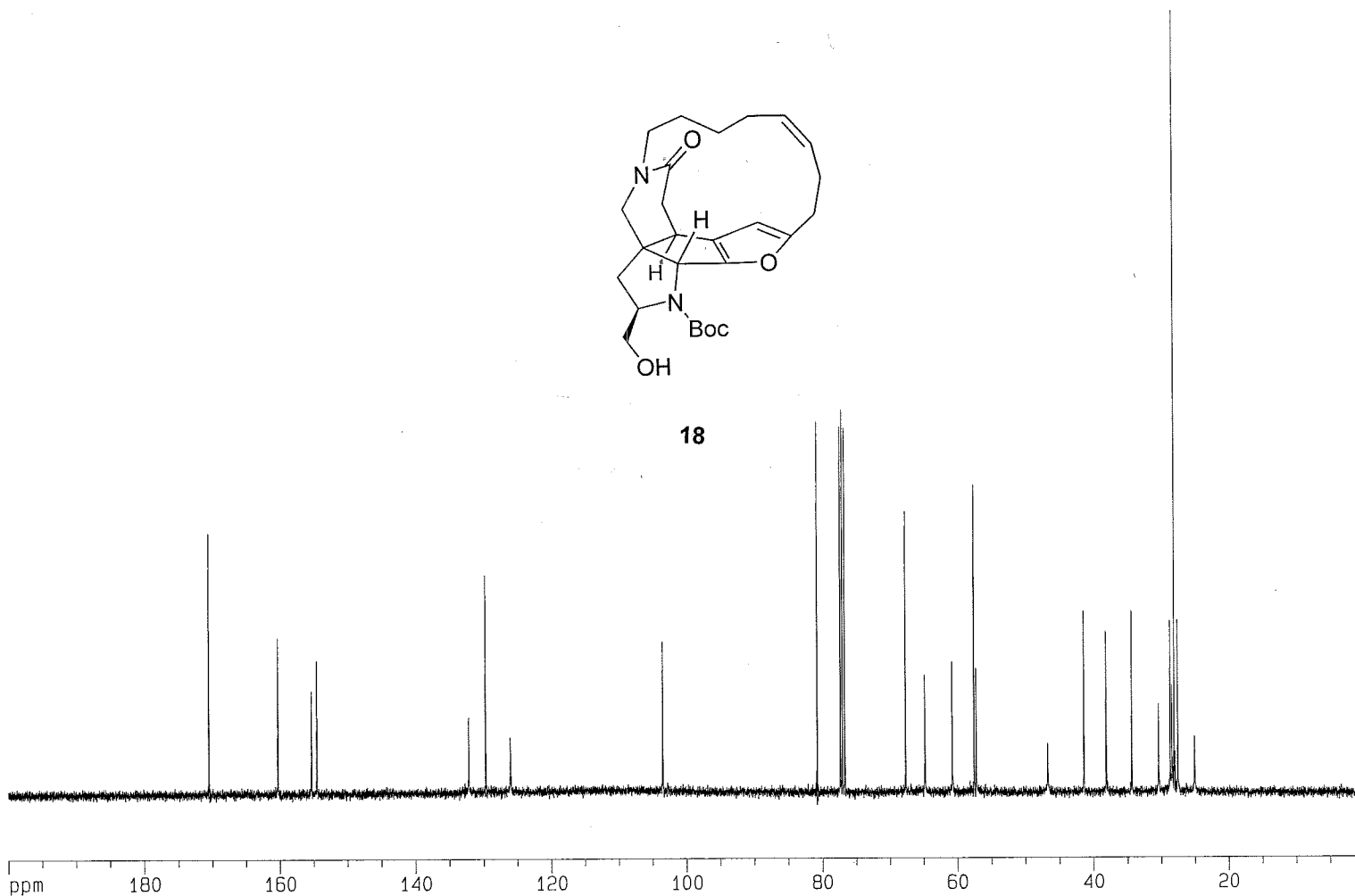
F2 - Processing parameters
SI 32768
SF 400.1300091 MHz
WDW no
SSB 0
LB 0.00 Hz
GB 0
PC 1.00

1D NMR plot parameters
CX 20.00 cm
F1P 10.000 ppm
F1 4001.30 Hz
F2P -0.500 ppm
F2 -200.07 Hz
PPMCM 0.52500 ppm/cm
HZCM 210.06825 Hz/cm

ppm

170.511
170.486160.255
155.292
154.510132.170
129.684
129.659
126.016103.485
80.772
77.319
77.000
76.681
67.659
64.777
60.754
57.550
57.194
46.734
41.421
38.118
34.359
30.339
28.659
28.427
28.156
28.135
28.115
28.094
28.069
28.044
28.024
28.003
27.940
27.553
25.030

18



Current Data Parameters

NAME 081308mgn
EXPNO 134213
PROCNO 1

F2 - Acquisition Parameters

Date_ 20080813
Time 10.52
INSTRUM spect
PROBHD 5 mm BBI 1H-B
PULPROG zgpg30
TD 24576
SOLVENT CDC13
NS 2048
DS 4
SWH 25125.629 Hz
FIDRES 1.022364 Hz
AQ 0.4891124 sec
RG 8192
DW 19.900 usec
DE 6.00 usec
TE 300.0 K
D1 2.0000000 sec
d11 0.0300000 sec
d12 0.0002000 sec

===== CHANNEL f1 =====

NUC1 13C
P1 16.35 usec
PL1 -6.00 dB
SF01 100.6237959 MHz

===== CHANNEL f2 =====

CPDPRG2 waltz16
NUC2 1H
PCPD2 114.00 usec
PL2 0.00 dB
PL12 24.00 dB
PL13 24.00 dB
SF02 400.1316005 MHz

F2 - Processing parameters

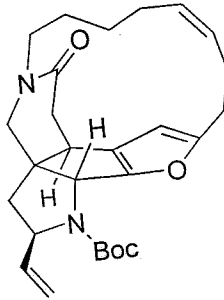
SI 32768
SF 100.6127892 MHz
WDW no
SSB 0
LB 0.00 Hz
GB 0
PC 1.40

1D NMR plot parameters

CX 20.00 cm
F1P 200.000 ppm
F1 20122.56 Hz
F2P 0.000 ppm
F2 0.00 Hz
PPMCM 10.00000 ppm/cm
HZCM 1006.12793 Hz/cm

Hz

2178.72
2178.19
2177.55
2177.04
2175.94
2175.40
1744.82
1743.86
1602.41
1591.69
1588.10
1561.91
1544.94
1534.25
1524.12
1423.36
1099.68
1085.82
979.46
977.15
975.23
966.30
952.44
834.07
783.80
781.25
768.07
763.13
760.22
747.61
746.50
619.45
613.94
612.05
606.55
601.10
477.15
466.20
459.54
453.57
431.35
374.32
293.56



Integral

2.000
4.257
1.073
0.955
1.055
1.033
2.153
2.136
3.506
1.316
2.449
1.304
12.990
5.141
0.885

ppm

8

6

4

S-32

2

0

Current Data Parameters
NAME 061808mgn
EXPNO 12802
PROCNO 1

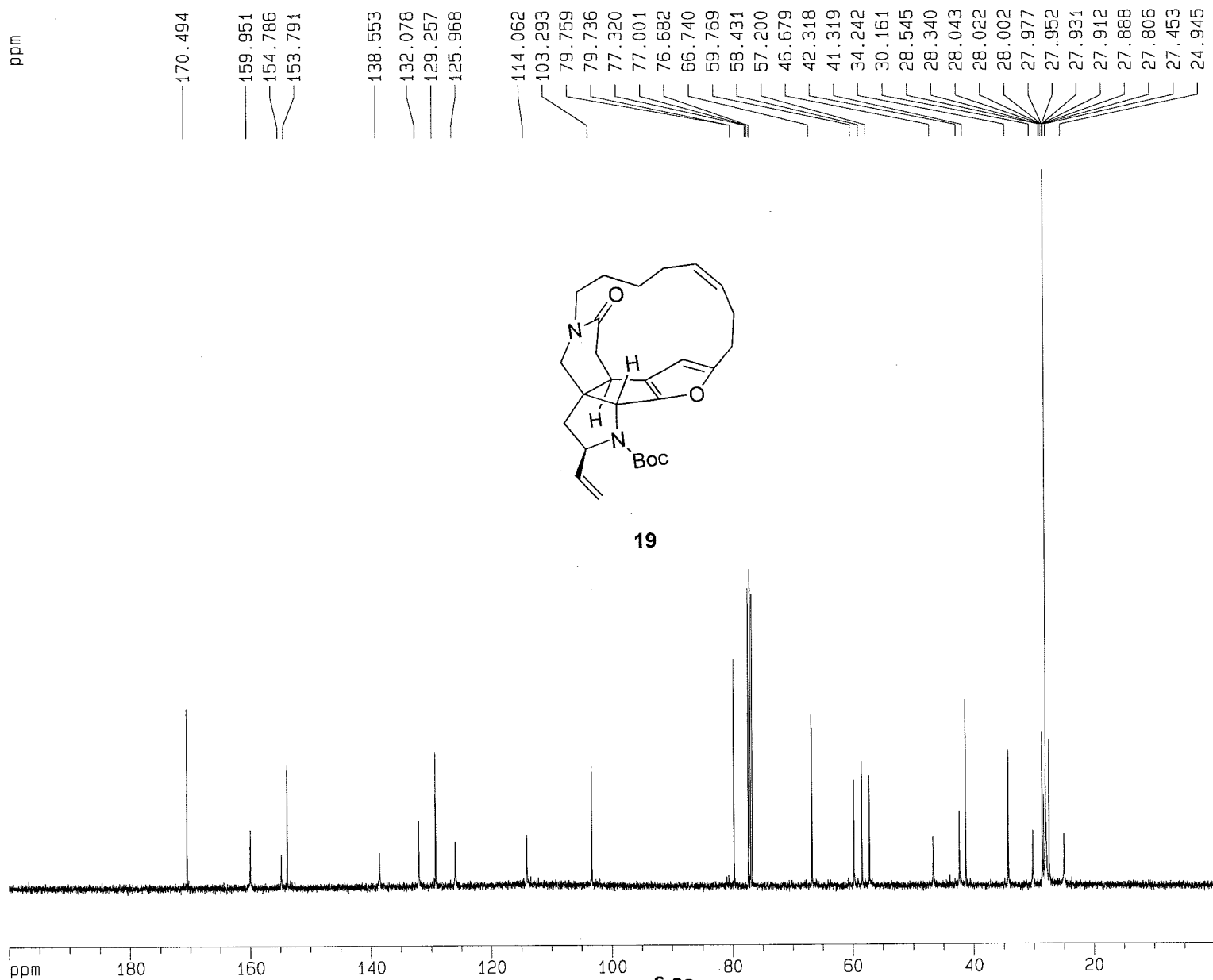
F2 - Acquisition Parameters
Date_ 20080618
Time 10.31
INSTRUM spect
PROBHD 5 mm GNP 1H/1
PULPROG zg30
TD 24576
SOLVENT CDC13
NS 16
DS 2
SWH 6172.839 Hz
FIDRES 0.251173 Hz
AQ 1.9907060 sec
RG 362
DW 81.000 usec
DE 6.00 usec
TE 300.0 K
D1 1.00000000 sec

===== CHANNEL f1 =====
NUC1 1H
P1 11.70 usec
PL1 0.00 dB
SFO1 299.8718518 MHz

F2 - Processing parameters
SI 32768
SF 299.8700101 MHz
WDW no
SSB 0
LB 0.00 Hz
GB 0
PC 1.00

1D NMR plot parameters
CX 20.00 cm
F1P 10.000 ppm
F1 2998.70 Hz
F2P -0.500 ppm
F2 -149.93 Hz
PPMCM 0.52500 ppm/cm
HZCM 157.43175 Hz/cm

ppm



ppm

180

160

140

120

100

S-33

80

60

40

20

Current Data Parameters

NAME 081808mg
EXPNO 134513
PROCNO 1

F2 - Acquisition Parameters

Date_ 20080818
Time 11.54
INSTRUM spect
PROBHD 5 mm BBI 1H-8
PULPROG zgpg30
TD 24576
SOLVENT CDCl3
NS 2048
DS 4
SWH 25125.629 Hz
FIDRES 1.022364 Hz
AQ 0.4891124 sec
RG 13004
DW 19.900 usec
DE 6.00 usec
TE 300.0 K
D1 2.0000000 sec
d11 0.0300000 sec
d12 0.0002000 sec

===== CHANNEL f1 =====

NUC1 13C
P1 16.35 usec
PL1 -6.00 dB
SF01 100.6237959 MHz

===== CHANNEL f2 =====

CPDPRG2 waltz16
NUC2 1H
PCPD2 114.00 usec
PL2 0.00 dB
PL12 24.00 dB
PL13 24.00 dB
SF02 400.1316005 MHz

F2 - Processing parameters

SI 32768
SF 100.6127961 MHz
WDW no
SSB 0
LB 0.00 Hz

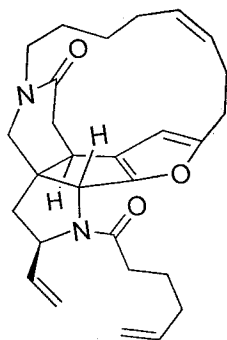
PC 1.40

1D NMR plot parameters

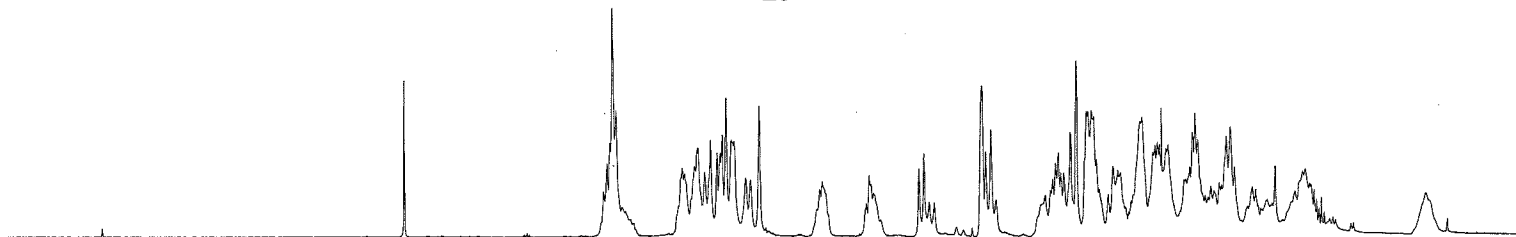
CX 20.00 cm
F1P 200.000 ppm
F1 20122.56 Hz
F2P 0.000 ppm
F2 0.00 Hz
PPMCM 10.00000 ppm/cm
HZCM 1006.12793 Hz/cm

Hz

2905.00
 2334.41
 2327.14
 2316.66
 2091.60
 2056.55
 2039.29
 2030.63
 2025.00
 2014.40
 1999.96
 1991.51
 1922.53
 1306.72
 1295.21
 1280.99
 1062.67
 1060.69
 1047.00
 1045.26
 1018.17
 1014.28
 1004.32
 998.17
 863.72
 828.33
 820.91
 815.57
 810.41
 797.54
 791.75
 724.09
 716.53
 709.37
 630.72
 618.77
 494.63
 411.47



20



Integral

3.2037
 7.6680
 1.0000
 1.1011
 1.0505
 2.1114
 3.8204
 2.9759
 1.6655
 5.6040
 6.0334
 2.1063
 3.1499

8
6
4
2
0

S-34

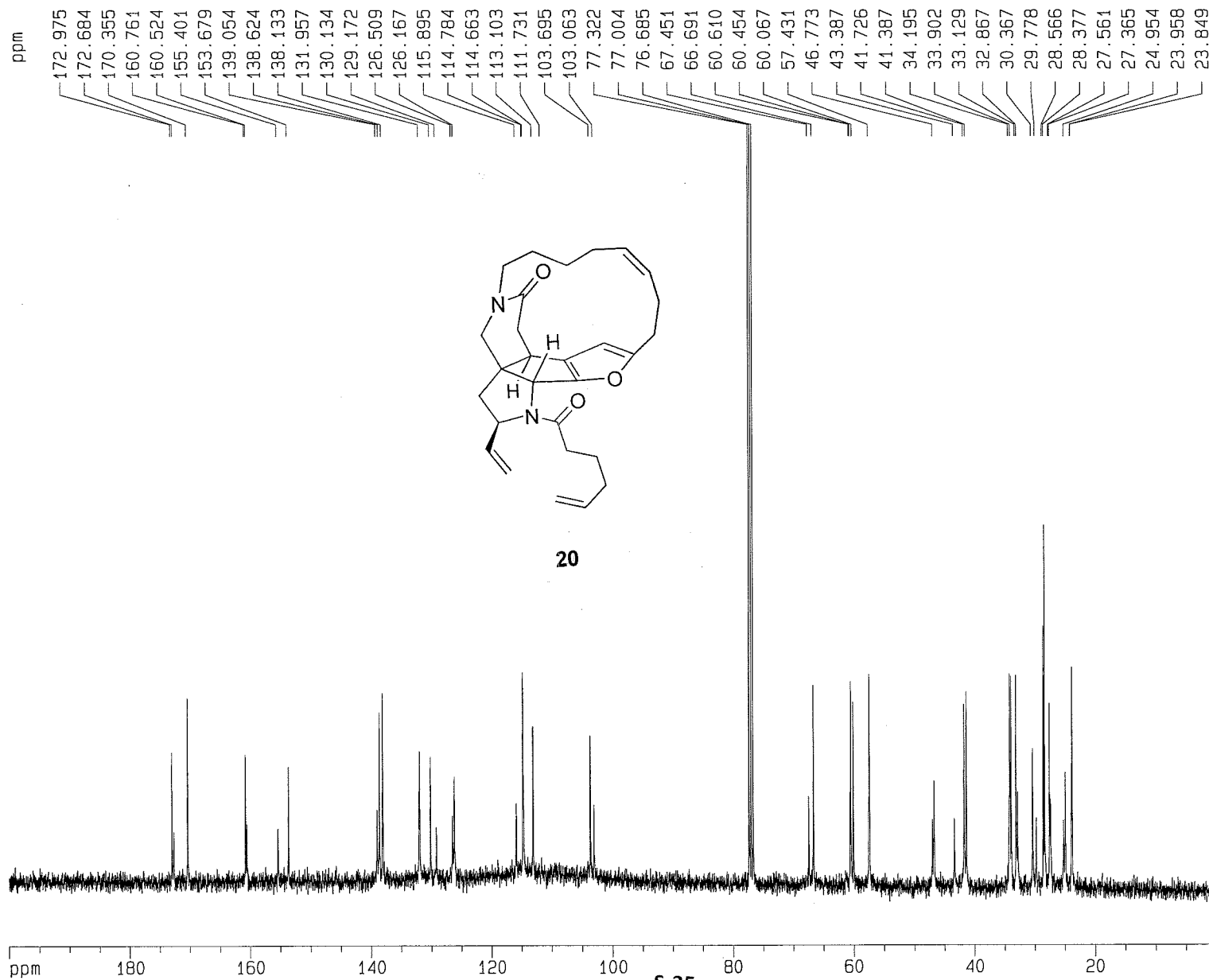
Current Data Parameters
 NAME 061908mgn
 EXPNO 12852
 PROCNO 1

F2 - Acquisition Parameters
 Date_ 20080619
 Time 10.26
 INSTRUM spect
 PROBHD 5 mm BBI 1H-B
 PULPROG zg30
 TD 24576
 SOLVENT CDC13
 NS 16
 DS 2
 SWH 8278.146 Hz
 FIDRES 0.336839 Hz
 AQ 1.4844404 sec
 RG 256
 DW 60.400 usec
 DE 6.00 usec
 TE 300.0 K
 D1 1.00000000 sec

===== CHANNEL f1 =====
 NUC1 1H
 P1 6.45 usec
 PL1 0.00 dB
 SFO1 400.1324710 MHz

F2 - Processing parameters
 SI 32768
 SF 400.1300091 MHz
 WDW no
 SSB 0
 LB 0.00 Hz
 GB 0
 PC 1.00

1D NMR plot parameters
 CX 20.00 cm
 F1P 10.000 ppm
 F1 4001.30 Hz
 F2P -0.500 ppm
 F2 -200.07 Hz
 PPMCM 0.52500 ppm/cm
 HZCM 210.06825 Hz/cm



Current Data Parameters
 NAME 081908mgn
 EXPNO 135313
 PROCNO 1

F2 - Acquisition Parameters
 Date_ 20080819
 Time 12.15
 INSTRUM spect
 PROBHD 5 mm BBI 1H-B
 PULPROG zgpg30
 TD 24576
 SOLVENT CDC13
 NS 2048
 DS 4
 SWH 25125.629 Hz
 FIDRES 1.022364 Hz
 AQ 0.4891124 sec
 RG 8192
 DW 19.900 usec
 DE 6.00 usec
 TE 300.0 K
 D1 2.00000000 sec
 d11 0.03000000 sec
 d12 0.00002000 sec

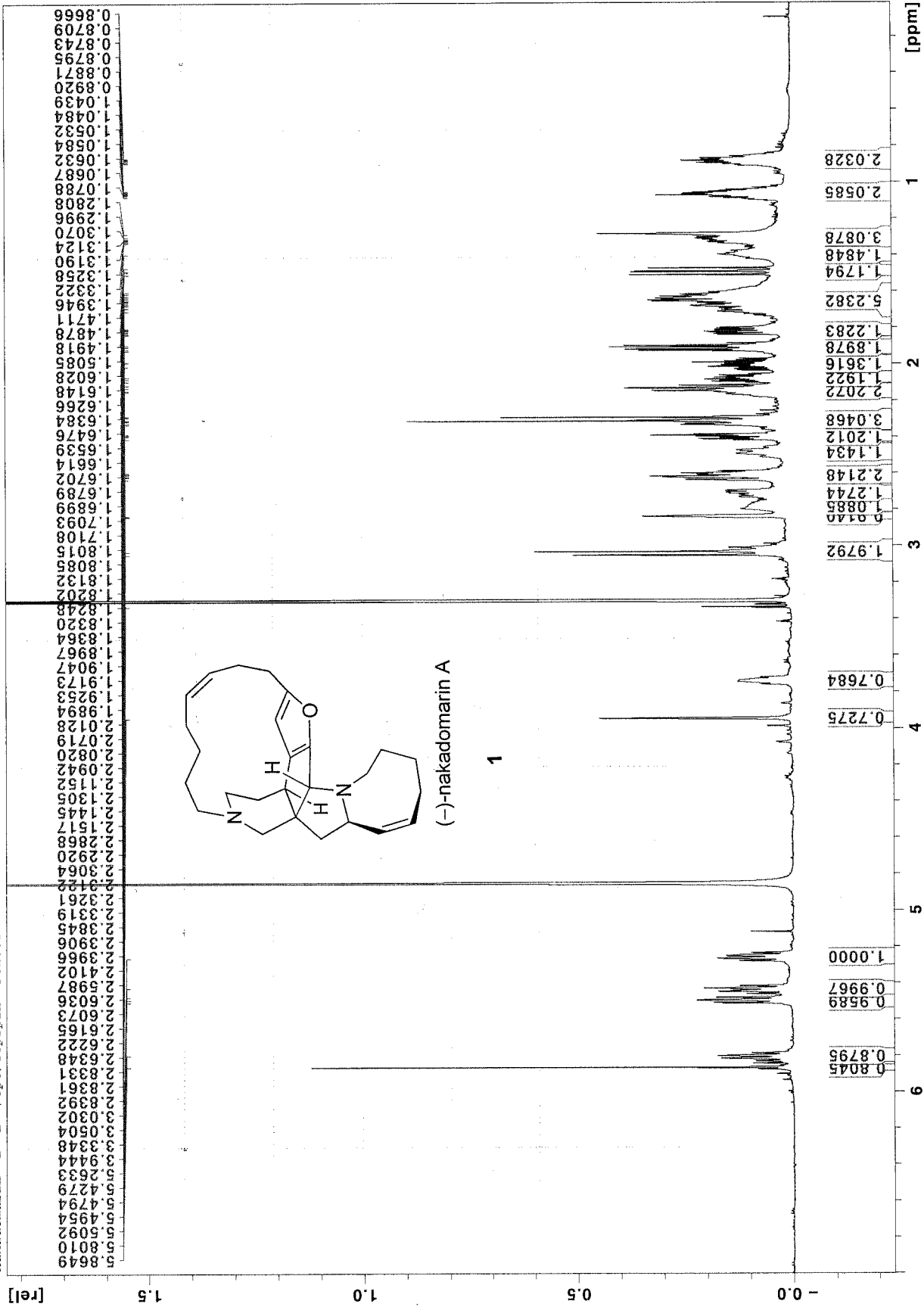
===== CHANNEL f1 =====
 NUC1 13C
 P1 16.35 usec
 PL1 -6.00 dB
 SF01 100.6237959 MHz

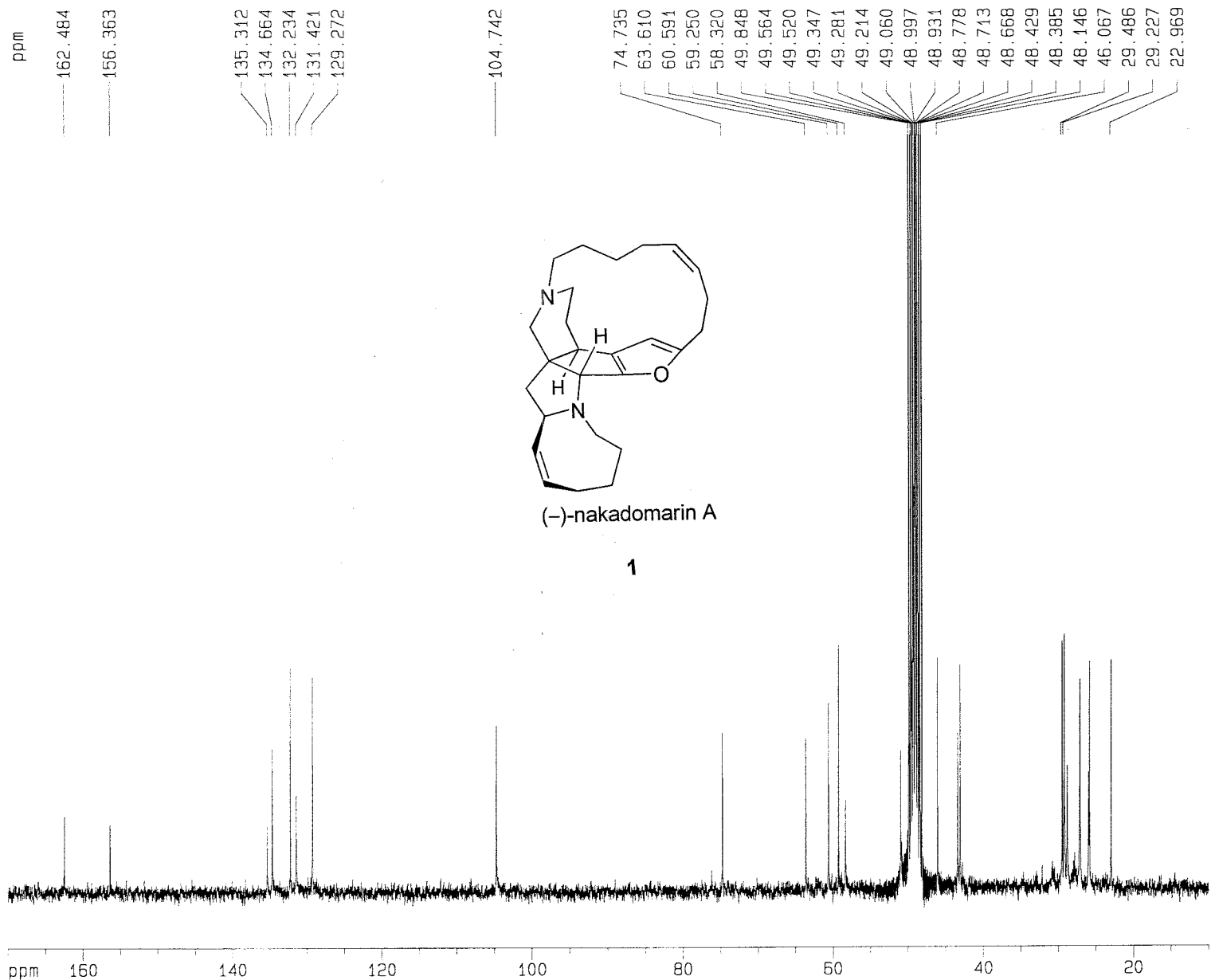
===== CHANNEL f2 =====
 CPDPRG2 waltz16
 NUC2 1H
 PCPD2 114.00 usec
 PL2 0.00 dB
 PL12 24.00 dB
 PL13 24.00 dB
 SF02 400.1316005 MHz

F2 - Processing parameters
 SI 32768
 SF 100.6127899 MHz
 WDW EM
 SSB 0
 LB 1.00 Hz
 GB 0
 PC 1.40

1D NMR plot parameters
 CX 20.00 cm
 F1P 200.000 ppm
 F1 20122.56 Hz
 F2P 0.000 ppm
 F2 0.00 Hz
 PPMCM 10.00000 ppm/cm
 HZCM 1006.12793 Hz/cm

nakadomarin 1 1 /opt/topspin Benesi





Current Data Parameters
 NAME 100108mgn
 EXPNO 140313
 PROCNO 1

F2 - Acquisition Parameters
 Date_ 20081002
 Time 11.09
 INSTRUM spect
 PROBHD 5 mm Multinu
 PULPROG zgpg30
 TD 24576
 SOLVENT MeOH
 NS 24000
 DS 4
 SWH 18832.393 Hz
 FIDRES 0.766292 Hz
 AQ 0.6525428 sec
 RG 16384
 DW 26.550 usec
 DE 6.00 usec
 TE 300.0 K
 D1 2.0000000 sec
 d11 0.0300000 sec
 d12 0.0000200 sec

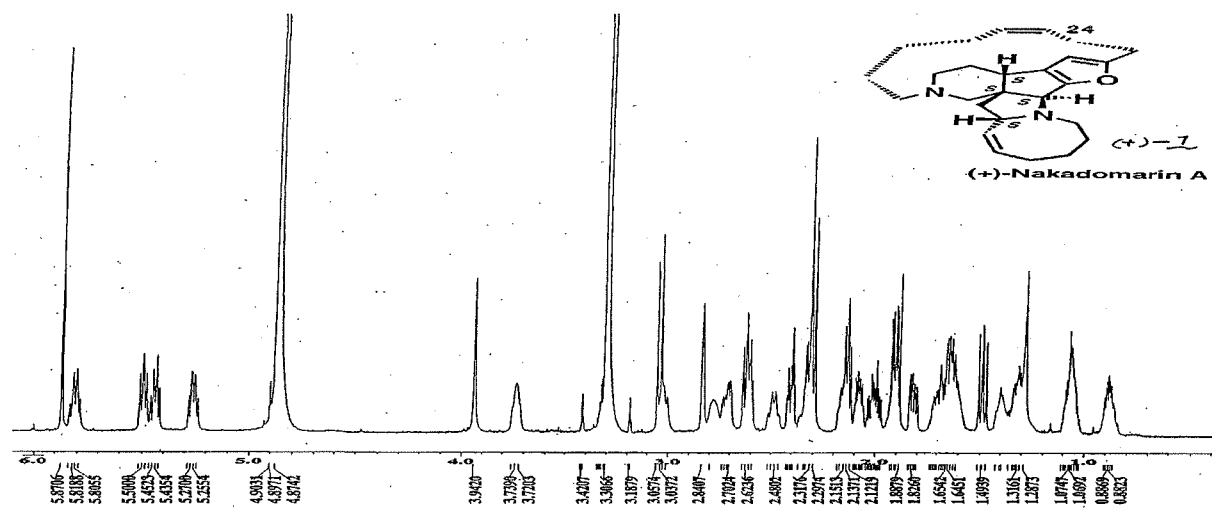
===== CHANNEL f1 =====
 NUC1 13C
 P1 11.80 usec
 PL1 0.00 dB
 SF01 75.4760200 MHz

===== CHANNEL f2 =====
 CPDPRG2 waltz16
 NUC2 1H
 PCPD2 110.00 usec
 PL2 0.00 dB
 PL12 17.50 dB
 PL13 17.50 dB
 SF02 300.1312005 MHz

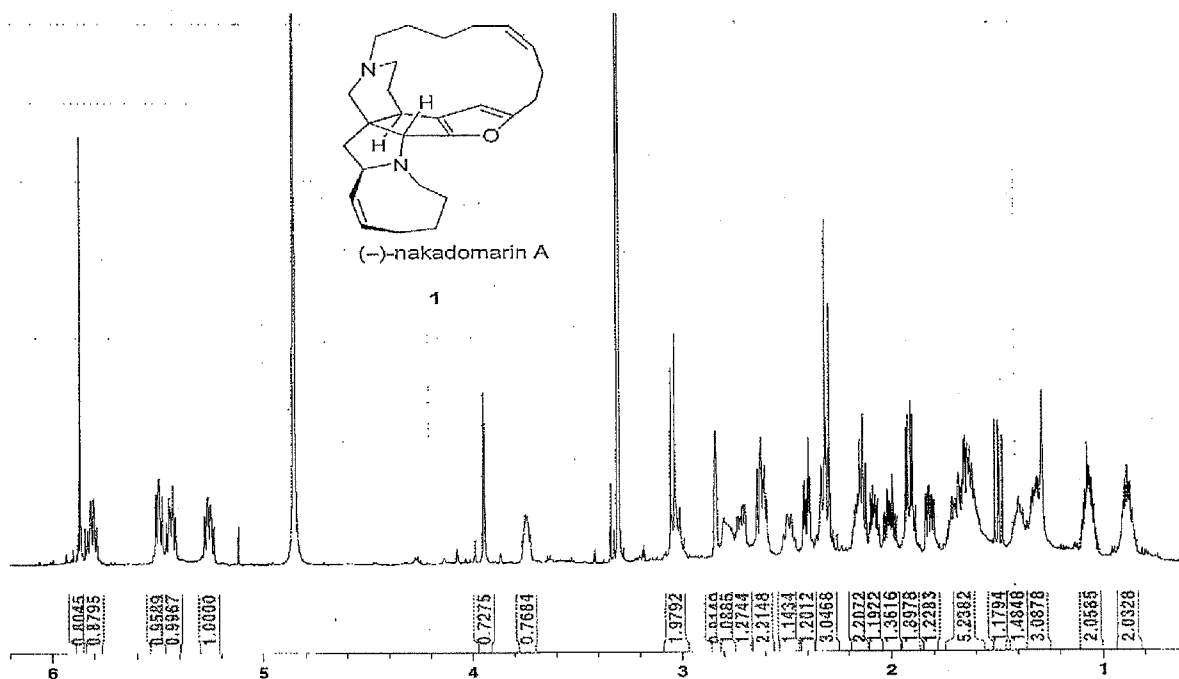
F2 - Processing parameters
 SI 32768
 SF 75.4676427 MHz
 WDW EM
 SSB 0
 LB 1.00 Hz
 GB 0
 PC 1.40

1D NMR plot parameters
 CX 20.00 cm
 F1P 170.000 ppm
 F1 12829.50 Hz
 F2P 10.000 ppm
 F2 754.68 Hz
 PPMCM 8.00000 ppm/cm
 HZCM 803.74115 Hz/cm

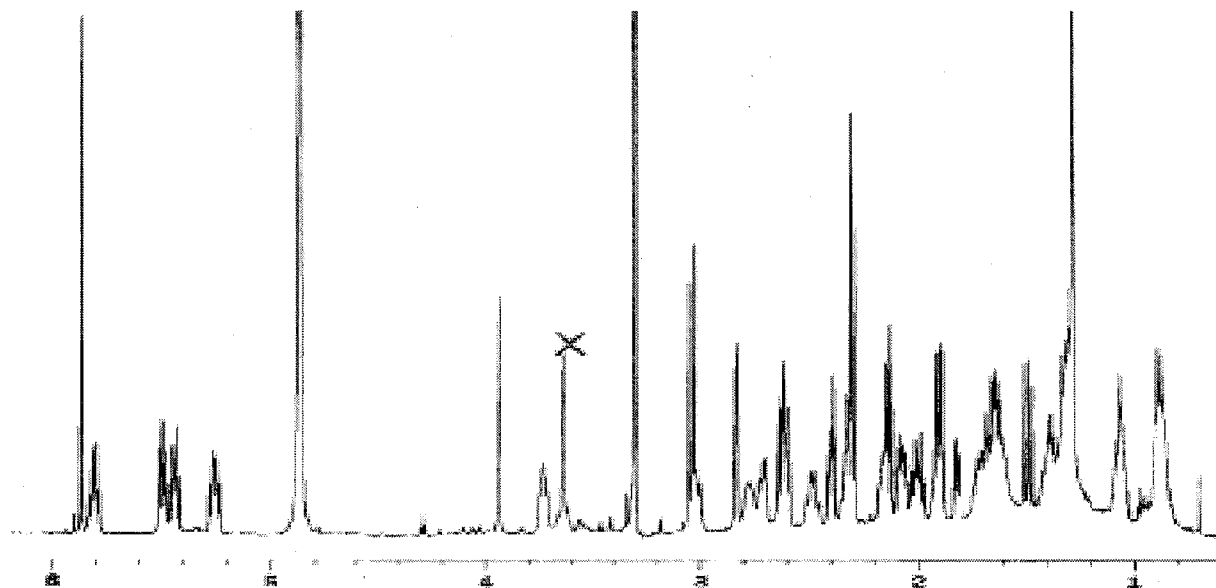
Nishida ¹H-NMR CD₃OD (600 MHz) spectrum of (+)-nakadomarin A (*J. Am. Chem. Soc.* **2003**, *125*, 7484)



Funk ¹H-NMR CD₃OD (600 MHz) spectrum of (-)-nakadomarin A



Kerr $^1\text{H-NMR}$ CD_3OD (600 MHz) spectrum of (+)-nakadomarin A (*J. Am. Chem. Soc.*, **2007**, *129*, 1465).



Dixon $^1\text{H-NMR}$ CD_3OD (700 MHz) spectrum of (-)-nakadomarin A (*J. Am. Chem. Soc.*, **2007**, *129*, 1465).

