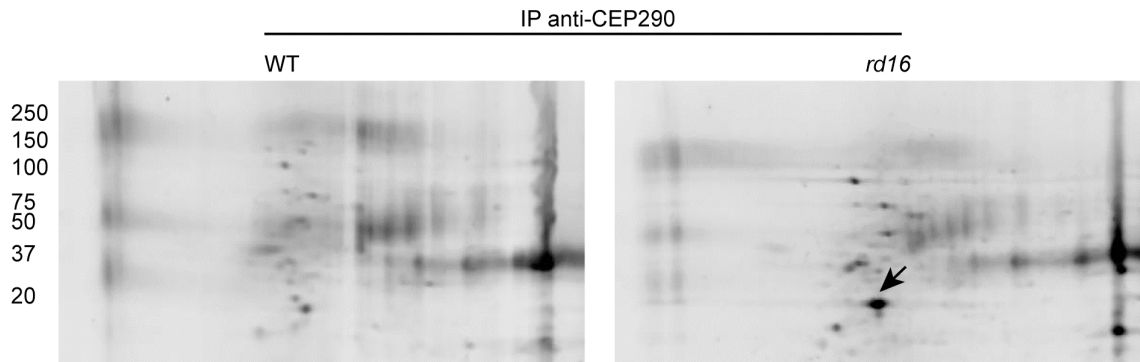


**Supplementary Figure S1:** Two-dimensional gel electrophoresis of proteins immunoprecipitated from wild type and *rd16* retinal extracts.



**Supplementary Figure S1:** Protein extracts from wild type (WT) and *rd16* mouse retinas were subjected to IP using anti-CEP290 antibody followed by 2-D gel electrophoresis. The gels were stained with SYPRO Ruby dye. Arrow indicates one of the spots that are specifically detected in the precipitated protein sample from WT mouse retina. The indicated spot was used for tandem MS/MS analysis.