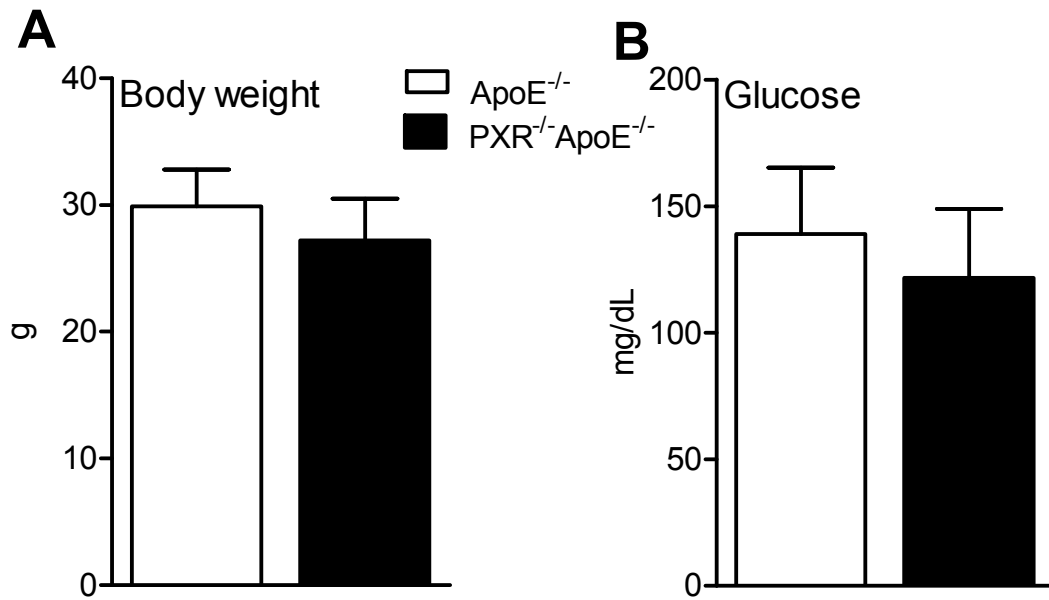
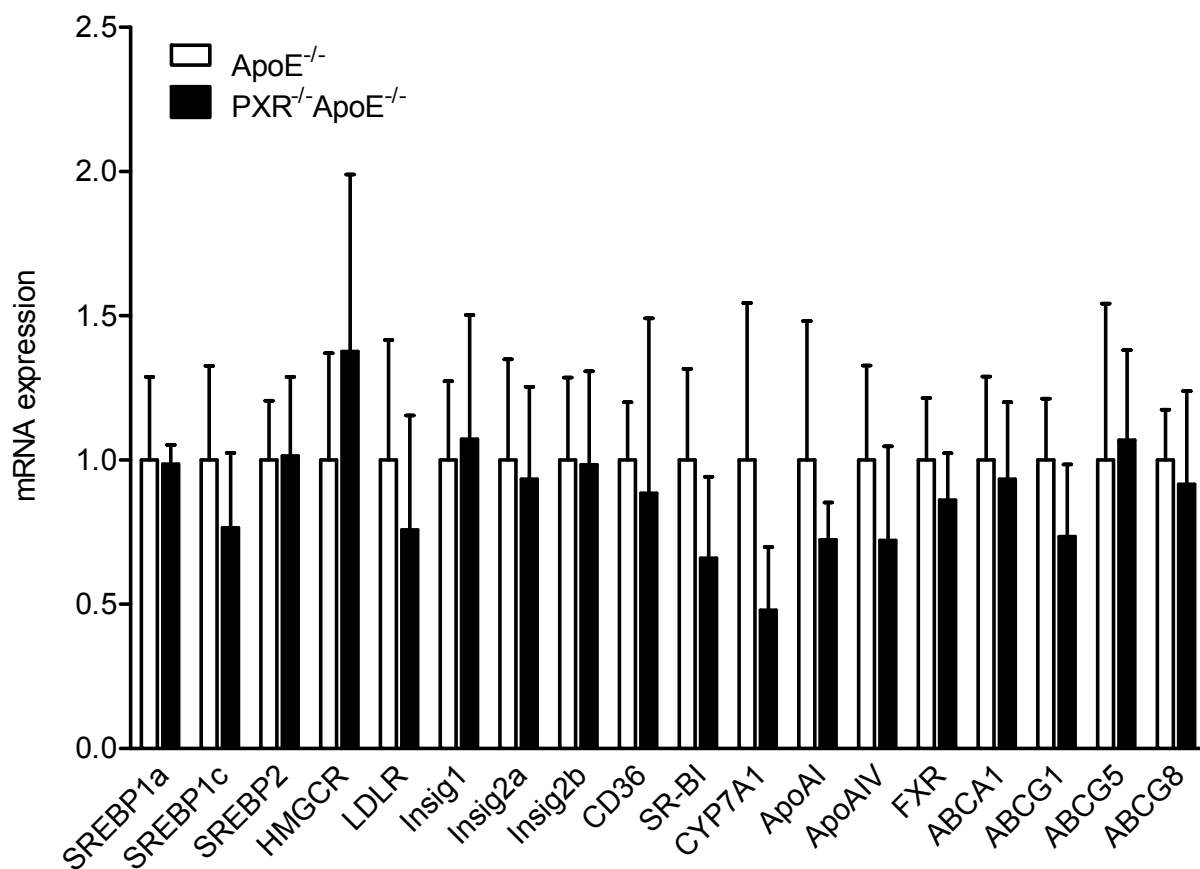


Supplemental Table 1. Primer sequences for QPCR.

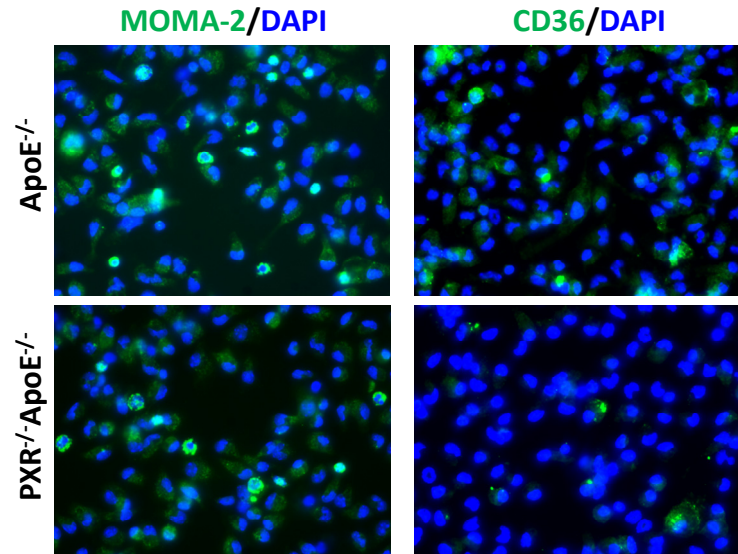
Genes	Primer sequences	Genes	Primer sequences
CD36	5'-CAGTCGGAGACATGCT-3' 5'-CTCGGGTCTCTGAGTT-3'	HMGCR	5'-AGCTTGCCCGAATTGTATGTG-3' 5'-TCTGTTGTGAACCATGTGACTTC-3'
SR-A	5'-GGAGTGTAGGCGGATC-3' 5'-GTCAATGGAGGCCCA-3'	LDLR	5'-TGACTCAGACGAACAAGGCTG-3' 5'-ATCTAGGCAATCTCGGTCTCC-3'
SR-B1	5'-CTCATCAAGCAGCAGGTGCTCA-3' 5'-GAGGATTCGGGTGTCATGAA-3'	Insig1	5'-TCACAGTGA CTGAGCTTCAGCA-3' 5'-TCATCTTCATCACACCCAGGAC-3'
ABCA1	5'-CCGAGGAAGACGTGGACACCTTC-3' 5'-CCTCAGCCATGACCTGCCTTGTAG-3'	Insig2a	5'-CCCTCAATGAATGTACTGAAGGATT-3' 5'-TGTGAAGTGAAGCAGACCAATGT-3'
ABCG1	5'-AGGTCTCAGCCTTCTAAAGTTCCTC-3' 5'-TCTCTCGAATGAAATTTATCG-3'	Insig2b	5'-CCGGGCAGAGCTCAGGAT-3' 5'-GAAGCAGACCAATGTTTCAATGG-3'
SREBP1a	5'-GCGCCATGGACGAGCTG-3' 5'-TTGGCACCTGGGCTGCT-3'	CYP7A1	5'-TATGCCTTCTGCTACCGAGTG-3' 5'-CATGCGTAGACGGATCAGTTC-3'
SREBP1c	5'-GGAGCCATGGATTGCACATT-3' 5'-GCTTCCAGAGAGGAGGCCAG-3'	ApoA1	5'-AAGAGGATGTGGAGCTCTACC-3' 5'-TTCTCGCCAAGTGTCTTCAGG-3'
SREBP2	5'-GCGTTCTGGAGACCATGGA-3' 5'-ACAAAGTTGCTCTGAAAACAAATCA-3'	ApoAIV	5'-CAGTGAGGAGCCCAGGATGTT-3' 5'-TCTACAGCTCCTTGGCATT-3'
ABCG5	5'-TGCCCATTCCTTTAAAAATCC-3' 5'-GATGAACTGGACCCCTTGG-3'	FXR	5'-TCCGGACATTCAACCATCAC-3' 5'-TCACTGCACATCCAGATCTC-3'
ABCG8	5'-GTAGCTGATGCCGATGACAA-3' 5'-GGGGCTGATGCAGATTCA-3'	GAPDH	5'-AACTTTGGCATTGTGGAAGG-3' 5'-GGATGCAGGGATGATGTTCT-3'



Supplemental Figure 1. Four week old of male ApoE^{-/-} and PXR^{-/-}ApoE^{-/-} mice were fed a semi-synthetic 0.02% cholesterol AIN76a diet for 12 weeks. Body weight (A) and fasting blood glucose levels (B) were measured in mice at 16 weeks old (n=10-13 per group)



Supplemental Figure 2. Total RNA was isolated from the livers of 16 week old male ApoE^{-/-} and PXR^{-/-} ApoE^{-/-} mice. The expression levels of hepatic genes involved in lipid homeostasis and other atherosclerosis related genes were measured by QPCR (n=5 per group).



Supplemental Figure 3. Fresh isolated peritoneal macrophages from ApoE^{-/-} and PXR^{-/-}ApoE^{-/-} mice were anti-monocytes/macrophages (MOMA-2) or anti-CD36 primary antibodies, followed by fluorescein-labeled secondary antibodies. The nuclei were stained with DAPI (blue). Magnification, ×400.