

Supplemental File

Supplemental Table 1. Primers used in the study

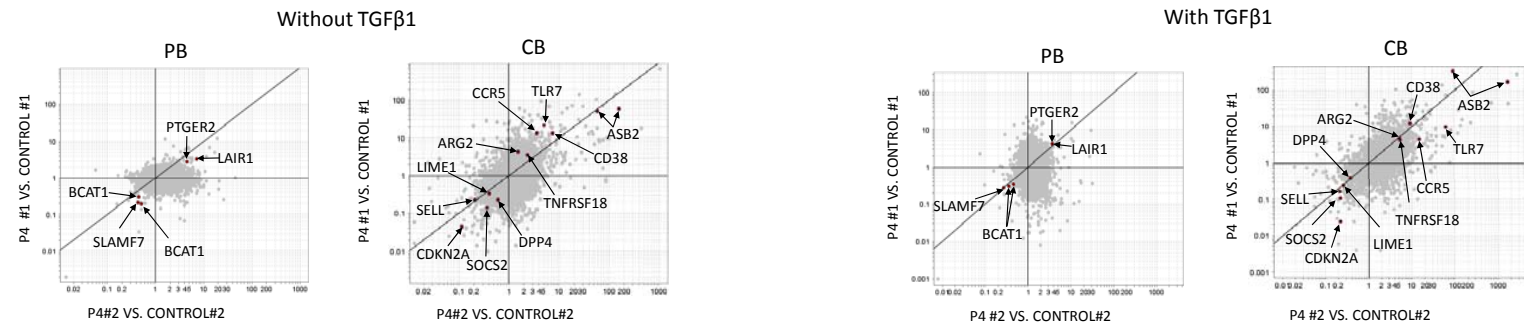
Primer name	Sequence (5'→3')	Use
Foxp3-1-F	tgg tac agt ctc tgg agc ag	Real time PCR
Foxp3-1-R	agg atg gcc cag cgg atg ag	Real time PCR
beta-actin-F	atg ttt gag acc ttc aac ac	Real time PCR
beta-actin-R	cac gtc aca ctt cat gat gg	Real time PCR
CCR6-F	gat tcc tca taa cat ggt cct gc	Real time PCR
CCR6-R	ata gtg aag gac gac gca ttg tc	Real time PCR
AHR-F	cat acc cca cta ctt cta gtt tag	Real time PCR
AHR-R	agg aat cca ctg gat gtc aaa tca	Real time PCR
IL-22-F	caa cac aga cgt tgc tct cat tg	Real time PCR
IL-22-R	cag gca ttt ctc aga gac ata aac	Real time PCR
IL-21-F	ttc tgc cag ctc cag aag atg	Real time PCR
IL-21-R	cac ttc cgt gtg ttc tag agg	Real time PCR
IL-17F-F	cag gag gta gta tga agc ttg ac	Real time PCR
IL-17F-R	atg gtg gat gac agg ggt g	Real time PCR
IL-17A-F	gac tgt gat ggt caa cct gaa c	Real time PCR
IL-17A-R	aca atc ggg gtg aca cag gt	Real time PCR
IL-23R-F	gac tca gga aat aat ccc agg t	Real time PCR
IL-23R-R	tcc aag agt gaa atc cta ttg aag	Real time PCR
STAT3-F	gtc tcc act ggt cta tct cta t	Real time PCR
STAT3-R	gta gcg cac tcc gag gtc a	Real time PCR
RORC-F	ttt tcc gag gat gag att gc	Real time PCR
RORC-R	ctt tcc aca tgc tgg cta ca	Real time PCR
IL-6R-F	tgg tgc agc ttc gtg ccc a	Real time PCR
IL-6R (variant 1)-R	ccc gca gct tcc acg tct t	Real time PCR
IL-6R (variant 2)-R	gag tac ggc gga tgc atg c	Real time PCR
SOCS1-F	cga caa tgc agt ctc cac ag	Real time PCR
SOCS1-R	agg cca tct tca cgc taa gg	Real time PCR
SOCS2-F	aag agg cac cag aag gaa ctt	Real time PCR
SOCS2-R	tac aga gat gct gca gag atg	Real time PCR
SOCS3-F	ttc gac tgc gtg ctc aag ct	Real time PCR
SOCS3-R	cat cgt act ggt cca gga ac	Real time PCR
OAS1-F	caa ctc tgc atc tac tgg aca	Real time PCR

OAS1-R	gca ctg gca ttc aga gga tg	Real time PCR
GFI1-F	cag gaa cgg agc ttt gac tg	Real time PCR
GFI1-R	cct tcg gag gtc cac ctt c	Real time PCR
CCL5-F	cag gaa cgg agc ttt gac tg	Real time PCR
CCL5-R	tct cca aag agt tga tgt act c	Real time PCR
EBI3-F	cgt.gca.cct.gtt.ctc.cac.g	Real time PCR
EBI3-R	ggc.tcc.agt.cac.ttg.gtt.tc	Real time PCR
LZTFL1-F	tac agg cta caa atg cac tgg	Real time PCR
LZTFL1-R	tcc tca gat ctt tga ttt ggt c	Real time PCR
IFIT3-F	gac act gct gtg caa cat gg	Real time PCR
IFIT3-R	agt tgc tct gag tta gag agg	Real time PCR
TNFSF13B-F	tct tac aca ttt gtt cca tgg c	Real time PCR
TNFSF13B-R	atg tga cat ctc cat cca gtg	Real time PCR
HIC1-F	acg gca agg gca agc tcg a	Real time PCR
HIC-R	agc acc tcg gcc gcc ttg	Real time PCR
METTL7A-F	aac atg cac cag gtg gct ga	Real time PCR
METTL7A-R	cca act ccc agg aca gtg g	Real time PCR
ASB2-F	agc gtg gtg cag ttc tgt ga	Real time PCR
ASB2-R	cag gta tct aat cag cct gc	Real time PCR
CD38-F	gca gaa gct gcc tgt gat gtg	Real time PCR
CD38-R	cag atg tgc aag atg aat cct c	Real time PCR

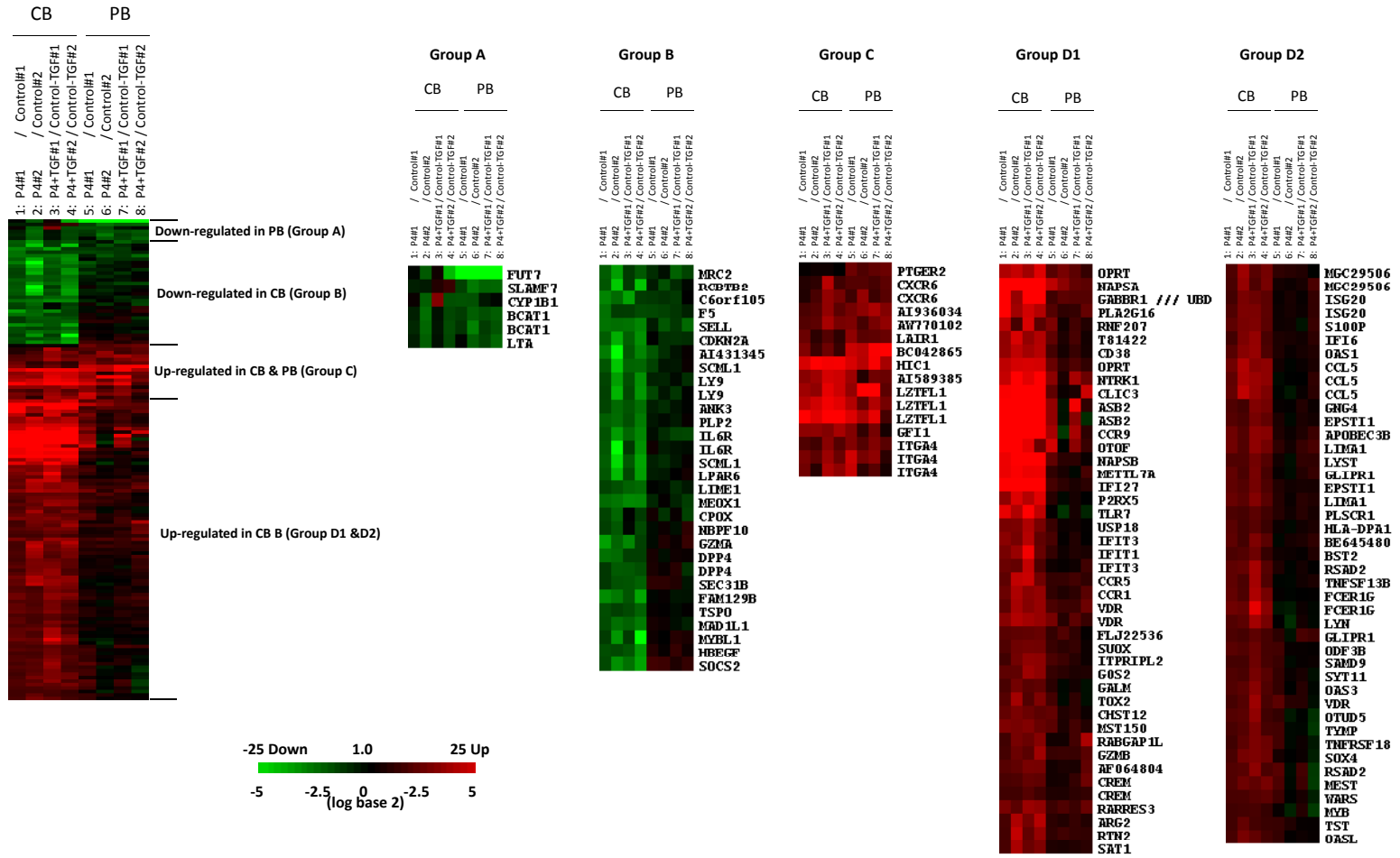
Supplemental Figures

Fig. 1. Genes that are regulated by P4 in CB T cells. CB and PB naïve T cells, cultured in the presence or absence of P4 and/or TGF β 1 for 5 days, were compared for global gene expression. Two sets of the experiments were compared for identification of genes that were reproducibly induced or suppressed. (A) Multi-plots with highlighted genes reproducibly up or down-regulated in response to P4 in the presence or absence of TGF β 1. (B) Treeviews of gene groups up- or down-regulated by P4 in T cells. Group A and B display genes down-regulated by P4 primarily in PB and CB respectively. Group C has genes up-regulated by P4 in both. Group D1 and D2 display genes that are up-regulated primarily in CB. Two sets of data in five gene groups are shown. (C) A real time RT-PCR assay on CB T cells was performed for the selected genes. The data are representative of 2-3 independent experiments. Relative expression values after normalized with β -actin levels are shown. The error bars are differences of duplicated measurements.

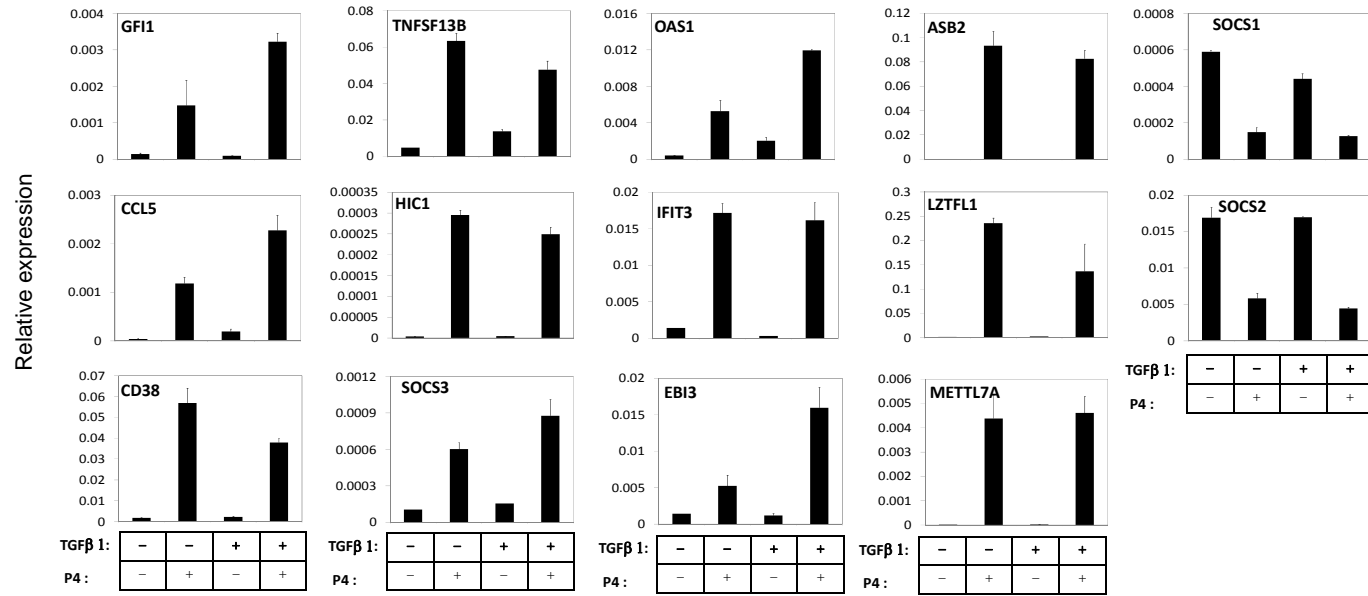
A



B



C



Supplemental Figure 1