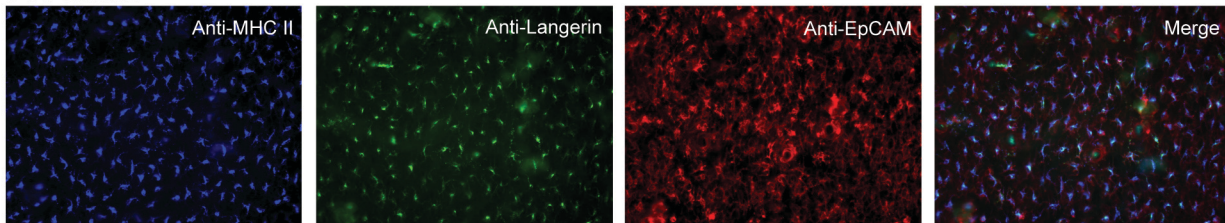
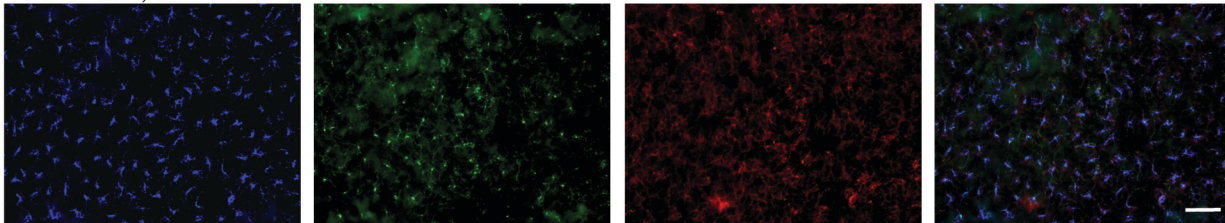


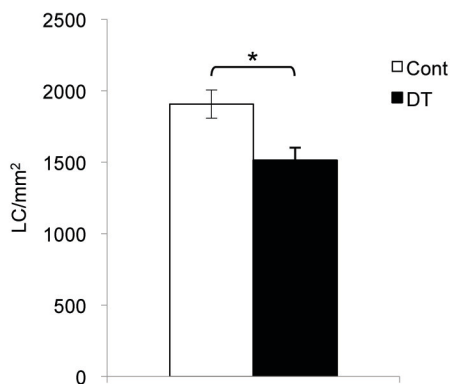
## Figure 1

a

P14 Control

P14 *K5-rtTA; tetO-Dkk1*

b



## Supplemental Data

**Figure 1. LC densities and characteristics in double transgenic *K5-rtTA; tetO-Dkk1* mice.**

(a) Epidermal sheets were prepared on postnatal day 14 (P14) from doxycycline-exposed littermate control (Cont) and *K5-rtTA; tetO-Dkk1* (DT) mice, stained with anti-EpCAM, anti-Langerin and anti-MHC class II mAb and visualized via immunofluorescence microscopy (bar = 50 mm). (b) LC densities in epidermal sheets from DT and Cont mice on P14 (3 random fields per mouse, n=5 mice per group, \*p<0.05).